

Aid from Community Chest

Girl Scouts Issue Appeal for Leaders, Sponsoring Groups

"If we had more leaders we could help more girls through scouting, but it is very difficult to find women to lead and groups who will sponsor the girls," declares Dorothy Wilson, field director of the Santiam area local Girl Scout council.

"We are not in conflict with other local agencies that serve in the interest of girls for we all have the same problem, and we can't help all of the girls who want to join either the Girl Scouts or the Camp Fire Girls."

Mrs. Lois Albin Succumbs at Salem Home

Mrs. Lois Marjorie Albin, wife of Guy H. Albin, died Thursday morning at their residence, 2085 Raynor st. Funeral services will be at 10 a.m. Saturday at Clough-Barrick chapel, with burial in City View cemetery.

Mrs. Albin was born June 23, 1904, in Brownsville, Ore., the daughter of R. N. and Minnie Melvin. She was a member of Evergreen chapter, Eastern Star, at Woodburn and Salem Memorial Hospital auxiliary.

Survivors are the widow; a daughter, Doris, and mother, Minnie Melvin, all of Salem; aunts, Mrs. H. Z. Ramsdell of Tacoma and Mrs. S. L. Nichols of Fendleton; uncles, E. C. Melvin of Tacoma and Roy Hale of Canby.

Development of Backward Areas Bill Starts Moving

WASHINGTON, Sept. 22—(AP)—President Truman got quick and favorable action from the senate banking committee today on his "point four" program for the advancement of underdeveloped areas of the world.

The committee unanimously approved legislation designed to start it off, acting a couple of hours after Mr. Truman told democratic leaders at a White House conference that he'd like to see it start moving through congress.

"All we want to do," Lucas said in reference to the bill, "is get it on the calendar (of bills ready for action) and show that we are moving in the right direction."

Polio Reaches 6-Year High

PORTLAND, Sept. 22—(AP)—The incidence of polio in Oregon has touched a six-year high with 27 cases in the last week.

The state board of health said the large number might mean that the disease has reached the year's peak. It was at this time last year that polio began to decline.

The 27 cases were widely scattered, except for eight in Portland.

Friction Causes Log Truck Fire

A logging-truck fire, caused by friction that resulted when the truck was driven on two flat tires, called city firemen to West Salem Thursday.

The fire started about 1 p.m. and was extinguished quickly with little damage to the logs. The truck, owned by the Leadbetter Logging company of Portland, was in the 1400 block on Edgewater street when the fire broke out.

Salem Nursing Home

3595 D Street
Something new . . . something different in caring for patients of the most delicate type.
Phone 2-3853
Miss Bernice Struckmeyer, Superintendent

Electric Workers Bloc Asks Divorce From Communists

CLEVELAND, Sept. 22—(AP)—Right wing forces of the United Electrical Workers took steps tonight to remain in the CIO if the union is expelled at the CIO convention here Oct. 31, or if it secedes.

A caucus of right wing delegates tonight elected a 10-man committee to carry its fight against the union's leftist leadership to top CIO management.

The caucus issued a statement saying this committee will ask the CIO to "determine the best way to provide a CIO International union in the electric industry free from the domination of the communist party."

James B. Carey, CIO secretary-treasurer and former U.E. president, presided at the caucus.

The newly born oyster or larvae is so small it can barely be seen by the naked human eye.

110 Degrees In California

LOS ANGELES, Sept. 22—(AP)—One hundred degree weather gave the last day of summer a blistering season-end fillip in southern California today.

Topping all the high marks was an official 110 at San Bernardino.

San Fernando reported 104 and Pasadena, 101. Burbank and Glendale had 98 and Van Nuys, 95. In Los Angeles the mercury held to 91.3 degrees.

Forecasters said it probably will be as hot, maybe more so, tomorrow.

A bottle about the size of a man's little finger could hold as many as 1,000,000 oysters when they're a day old.



A Beautiful 6 Piece Setting of . . .

"Homer Laughlin"

POTTERY

\$3.10

Per Set Six

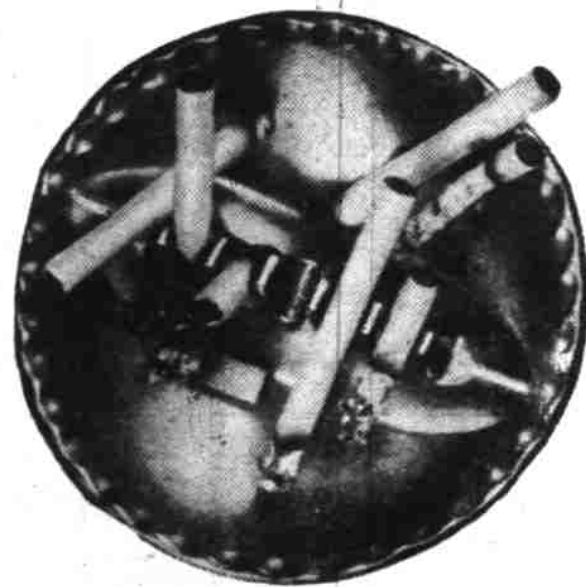
Here's our newest pottery by Homer Laughlin! Come see it now and choose the six piece setting as a starter. Gorgeous shades of pastels in colors of the desert.

Gift Shop -- Main Floor

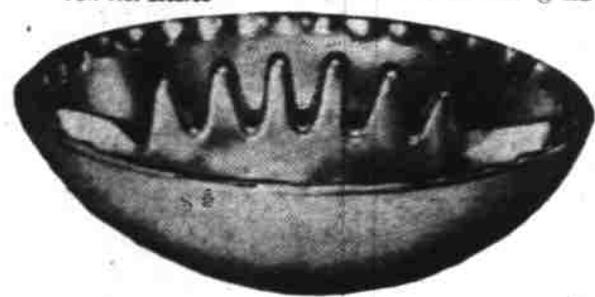
Open Tonight Till 9

Miller's

MADE OF
NEW! COORS
ASH TRAYS THERMO-PORCELAIN



Ansh SAFETY Ashtray Pat. No. 2,252,754 1/2 ACTUAL SIZE



- Green
- Yellow
- Dubonnet

\$

Coors . . . thermo-porcelain is so smart and practical! Easy to clean . . . this creamy answers all your ash tray problems. See them in the gift shop . . . Be the first to try one!

Gift Shop -- Main Floor

Open Tonight Till 9

Miller's

It's a Mademoiselle Exclusive

\$24.95

Fashion-right, in radiant Sanchilla tissue crepe . . . with plunging neckline and standing collar of the smartest styles. Two tiny jeweled pins highlight the bodice . . . the skirt is graced with flattering petal pockets and soft unpressed pleats. Smart sophistication for the "five-foot-four and under" miss. In fall shades: black, brown, floric grey, sable taupe, teal, signorywine, campiello green.



ever lovely . . . ever washable

PLAID SHIRT

3.95



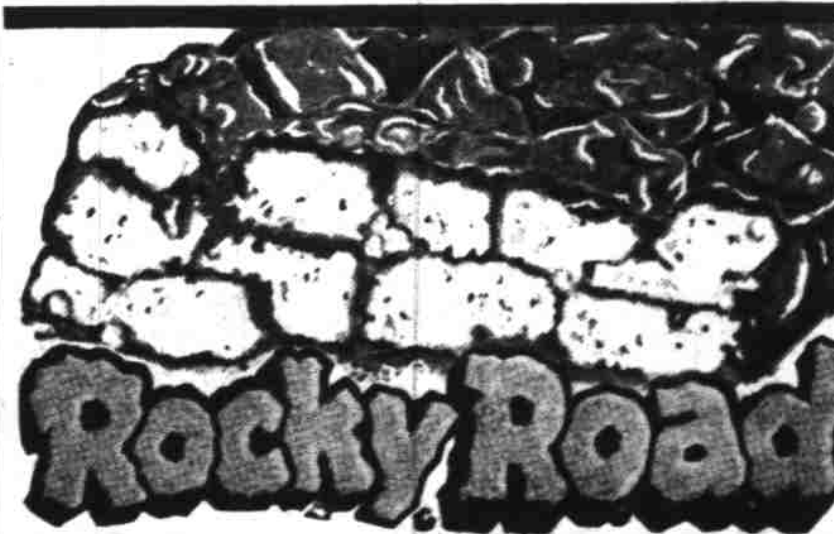
SHIP 'N SHORE

Aristomoor Rayon Fabric

We don't have enough superlatives to describe this beauty. The exclusive plaids are exquisitely colored.

The tailoring's magnificent—convertible collar, action-back pleats, extra long tails. The fabric's the kind you dream about—colorfast, wrinkle-resistant, hanky-washable. And it's all yours at a trifling little price! Sizes 32 to 40.

Famous SHIP 'N SHORE quality as seen in LIFE MADEMOISELLE and SEVENTEEN



It's the true "Rocky Road" . . . and it's fresh-made. We're again able to get luscious pure Swiss milk chocolate needed to make Rocky Road, and we've added the lightest, fluffiest of fresh marshmallows and crisp pecans!

You'll love it . . . and it's so light in weight, you'll be surprised at how much you can get even on quarter or half pound purchases! Try it!

\$1.25

Open Tonight Till 9:00

Miller's

Miller's

Twice as warm . . . twice as smart! Face the coldest days in Youthmore's newest success—a full length storm coat of dashing natural camel fleece . . . lined throughout with silky, toasty-warm Alpaca and topped with a luxuriant,

shoulder-wide collar of deep brown Matara Mouton. A "must" for country, for campus, for winter sports!

\$135



YOUTHMORE Original



YOUTHMORE Original

\$72.50

high fashion notes . . . in two tones of gray. Seldom will you find a suit so simple . . . yet so dramatic! Youthmore does it for you in a fine yarn-dyed worsted, in the season's most successful color—gray—adds two dashing Parisian hip panels in darker contrast, to match the cigarette-slim skirt. Choose this suit for its elegant, sure flattery, its superlative tailoring!

Open Tonight Till 9:00

Miller's

Friday Night Specials

AT YEATER'S!

OPEN TONIGHT TILL 9

KENT ALL GLASS

COFFEE MAKER SET

Includes Coffee Maker, with the famous porcelain Kent automatic timer-filter, sugar and creamer, and mirror tray. Available in frosted blue, green or ivory. Reg. 8.50. Tonight only . . . 3.95

COMBINATION PADLOCKS

Regular 85c
Tonight Only

49c

YEATER APPLIANCE CO.

875 Chemeketa Street

Phone 3-4311