

### Interest High In State Fair, Spitzbart Says

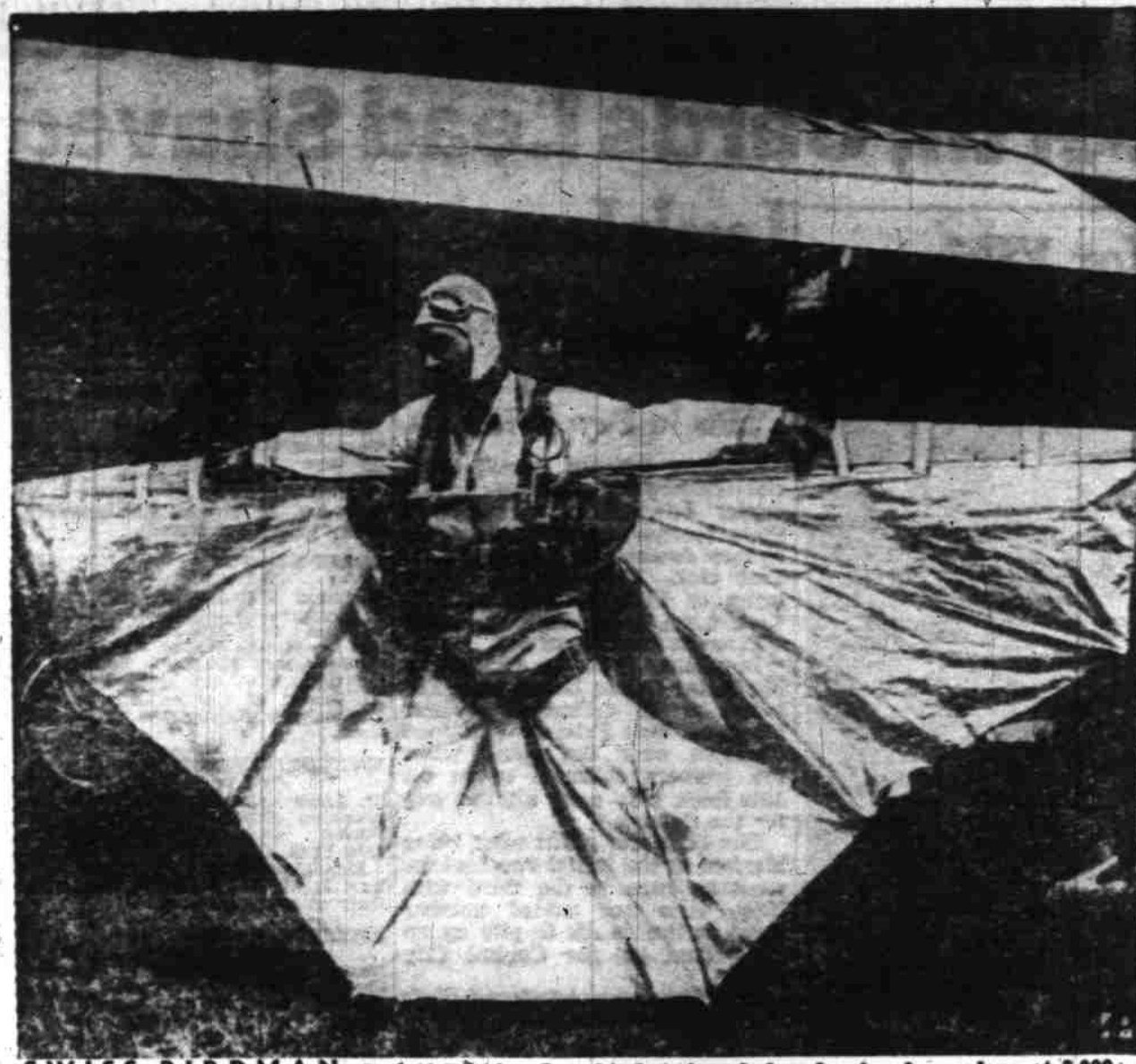
Although the state fair is yet a month away, Manager Leo Spitzbart reported Monday more exhibitor interest than at any time during his 14 years as fair manager. Particularly noteworthy is the large number of out of state livestock exhibitors with show strings already entered from Idaho, Washington and various California points.

Total prizes and premiums for Oregon's 83rd annual state fair, Sept. 5 to 11, will approximate \$75,000, the largest in history. Entries in the livestock classifications positively close on mid-night, Aug. 5. Deadline for floral, cooking and textile entries are not until Sept. 4.

Mrs. Verle Goode, Stayton, head of the floral department, states there will be a record number of displays in her division. She also added that more garden clubs will feature floral arrangements than in any year since 1941.

The recreational aspect of the fair's week long stay has been completed. Helene Hughes, producer of the night-time stage show, has booked all her talent and has assured Spitzbart that the 1949 presentation will be even better than last year's show which played to capacity houses all week. Miss Hughes has also contracted four top high wire acts which will be the feature of free midway shows four times daily.

The nightly combined horse-show rodeo is also heralded as a strong repeater over last year's record performances. Manager Harrison Cutler is already hard pressed for stall space, so great has been the demand by Oregon, Washington, and California show strings. The show will be staged six nights of the fair with straight rodeo competition slated for Sunday, September 11.



**SWISS BIRDMAN**—Rudolf Boehlen flaps his batwings before leaping from plane at 2,000 meters in test by Swiss Air Office. He landed by parachute when wings failed to support him.



(Editor's Note: Fifteen-year-old Ronnie Thorsen of Portland has been bed-ridden most of his life with recurrent attacks of rheumatic fever. But that hasn't dampened his enthusiasm for model airplane building which he does with such skill that last year his plane, flown by a friend, took first place in an international contest. Ronnie tells in this series of articles how to get started in one of the fastest growing hobbies in the nation.)

#### CHAPTER THREE General Construction

To those who like to work with tools and make things, building model airplanes provides plenty of interest. Model clubs have grown up all over the country and each year it seems like more and more people are getting into this fascinating hobby.

I have found model building the ideal answer to help those who may be disabled or shut in. Each month, every news-stand carries a wide variety of magazines and publications on model building alone.

The accepted way followed by all builders in starting their projects is to have a set of plans and instructions and follow them as closely as possible. Model makers eventually get enough experience and "know-how" to design their own craft, but even they follow a set of plans and use standard construction principles.

Unless you have already collected your own tools and equipment, I'd like to offer a few items have been helpful to me in my building. Adapting what you have already on hand is of course to be considered when you plan to build.

#### Trimming Knife

One of the items most used will be some sort of trimming knife. Several manufacturers offer complete sets with handles made to hold every type of blade or bits of old razor blades. Items you may already have around the home workshop such as small nosed pliers, clamps (clothespins may be adapted for many uses here), small hand drill or if you desire, a most welcome addition to the modeler's tool kit is an electric type of roto-tool. These use every imaginable

type of small tool, including drills, grinders, buffers, saws, polishers and what not. You will also want some sort of block sander, a good straight edge for a trimming guide and possibly a scroll saw. I have a small electric jig saw which serves neatly for all sawing work.

Most of my work is done while I am sitting in my adjustable bed, so my work-table problems are different than most builders have. I use a large flat board to lay my plans on and various adjustable bed tables for working purposes.

#### Supplies Needed

For supplies, there are a number of things you should keep on hand. You'll probably have to get from your model dealer some cement, clear or colored dope, some good camel hair brushes, lacquer thinner for thinning dope and cleaning brushes and perhaps, some assorted sheets and blocks of balsa wood. Usually, however, as far as actual construction materials are concerned, these will come with model kits, or at least will be determined by instructions furnished with the design of plane you will build.

Generally speaking, there are a few basic steps that fit most jobs. One of the first things is to lay out all your plans and become familiar with the thing. Most likely, you will construct your planes parts directly over the plans. In doing this, use wax paper over the plans or rub a cake of soap over them. This will prevent glue from sticking to your plan sheets. Don't be scotch with glue, but also don't make big blobs on joints. Always re-ep glue tube so it won't dry out. When making a model with built-up wings, pin wing leading

and trailing edges over plans. Remember, pins are stuck beside, not through the wood. The wing tips and ribs are then added. Coat surfaces very lightly with cement and allow to dry. Then join as shown in plans, using just enough cement to properly stick the joint. In working directly over plans in this way, you are more likely to make less mistakes and end up with a much better job.

When constructing a cabin type fuselage, work over plans and construct the second side over the first so that they will be exactly alike. Again, use wax paper strips to prevent messing up the job with cement. When putting crosspieces or bulkheads between two sides, be very careful to keep the whole set up in alignment. Misalignment in any phase of model building shows up horribly when the plane eventually takes to the air. A few moments patiently in assembling will mean smiles when flight time arrives.

### Oregon Code Reviser Here

R. K. Cullen, state code reviser, arrived in Salem Monday and will occupy offices in the state capitol. Cullen served as code reviser for the state of Kentucky where he lived for 11 years. He said it would be difficult to estimate how long it would require to revise the Oregon code authorized by an act of the 1949 legislature. Dr. K. J. O'Connell, attached to the University of Oregon law school, is chairman of the code revision group.

A meeting of the code revision council is slated here Saturday in the state supreme court library.

#### FLYING TIGERS

DALLAS, Tex.—(INS)—Two tiger cubs were air-exposed recently from Dallas to a New York animal dealer. One of the cubs then was promptly re-exposed — to the Europe Park Zoo in Kansas City, Missouri.

### Circuit Court Defendants Sent to Prison

Two men were sent to the state penitentiary and three men and one woman placed on probation Monday when they pleaded guilty to varying charges in Judge George R. Duncan's circuit court.

Harry C. Keller was sent to the prison for two concurrent three-year sentences on two charges of obtaining money by false pretenses. They involved checks passed to Gilbert Weathers, Lyons route 1, and to Clifford L. Ambers in May and June.

Clifton Thomas, jr., received a two-year sentence for attempting to obtain money by false pretenses. The charge involved a check which Thomas and Shirley Ann Denn, who was placed on three years' probation Monday, allegedly tried to pass at Silverton a few weeks ago.

Others placed on probation were Gerald William Bowen, two years, larceny of tools and shoes from Jack Chapman on July 6; Don Ray Keiper, two years, contributing to the delinquency of two minor girls; LeRoy Edward Friederick, three years, larceny of a car owned by Chester Tucker on July 6.

Friederick was to be released to the navy, and Keiper to federal authorities for alleged violation of the Dyer act, involving interstate movement of a stolen vehicle.

Jack Rex Studer pleaded guilty to a charge of forging a certificate for purchase of a firearm on July 13 and was continued to today for sentencing.

### Employers Told Withholding Tax Blanks to Change

Employers were notified Monday by Ray Smith, income tax commissioner, that different type of withholding tax statement must be filed in the future.

In addition to the information contained on the form every employer will have his own number to identify his returns. As many employers throw away the form and later apply for a new supply, the blanks with number assigned to the employer is expected to stop this waste, Smith said.

When the forms are mailed out by the income tax division the envelopes will carry a notice calling attention to the importance of the contents.



#### TINY APPLIANCES

—Carney Chess, of North Hollywood, Cal., tinkers with a miniature heating pad, hot plate, toaster and iron, electrical appliances he builds as a hobby.

### Right-of-Way For Silverton Road Acquired

Approximately two-thirds of the three miles of right-of-way needed for the proposed new section of Salem-Silverton highway has been acquired or optioned, County Judge Grant Murphy said Monday. The county court was informed unofficially that the state highway department may call bids on the job in October.

Negotiations are continuing on some parcels of property, while others will probably require condemnation, C. A. Gardner, state highway right-of-way agent who is handling property acquisition, reported Monday. He is expected to report again in a week with a definite recommendation for further proceedings.

The new road would continue on from improvement completed last year to a point east of Central Howell. It would include an overpass over the railroad and a new entrance into Silverton.

The court has not announced a definite decision regarding last week's protests and support for the realignment, but members indicated that they feared the \$400,000 federal aid would be lost if the state's survey was not followed.

### CAP-Backed Air Show Set For Portland

The third annual Northwest's Greatest Air Maneuvers is scheduled for the Portland-Columbia airport, Sunday, August 7, according to information received here by Lt. Wade Dickinson, commanding officer of the Salem squadron, Civil Air patrol, from Oregon wing commander Col. W. G. Dye. The air show is sponsored by CAP.

Added to the amazing and spectacular performance of the world-famous "Acrojets" from Williams field, Arizona, the Civil Air patrol has billed an all-girl air race; girl parachute jumping; a girl and a man in stunt flying and other special events to make up a "12-ring air circus" for the afternoon.

Besides the "Acrojets," the United States Air Force will send a full air force command to help blanket the skies with planes flying in military maneuvers—always a highly impressive sight to the air-minded; appearance of the latest air force national guard and air reserve aircraft and a static display of air force and civilian planes.

Monies derived from the air show are used to carry on the Civil Air patrol cadet training program for the year.

### Ryegrass Seed Crop Expands

PORTLAND, Aug. 1—(P)—Seed industry experts today predicted a ryegrass seed crop 10,000,000 pounds larger than expected earlier in Oregon.

They said a survey indicated a harvest of more than 40,000,000 pounds. The harvest last year totaled 27,000,000.

Linn county growers, who pro-

duce much of the crop, credited favorable weather plus extensive use of chemical fertilizers and weed killers for the crop's comeback after a hard winter.

The market continued firm with producer prices reported at 9 1/2 to 9 3/4 cents.

**FIELD HOUSE**  
CAMP LEJEUNE, N. C.—(INS)—A new \$700,000 field house is being constructed by the Second Marine Division at Camp Lejeune. The three-story recreation center is being paid for from post exchange funds of the men who have served at the amphibious base.

The antelope jack rabbit lives chiefly in Mexico and a short distance north of the border.



Wiring bad? Cigaretts shorted? See me at once And don't be thwarted.



**FOOD FACTS—**  
**OF FISH & POULTRY**

With both fish and fowl on the U. S. Department of Agriculture "plentiful" list, now is the time to enjoy both of these delicious body-builders often.

**FITTS MARKET**

216 No. Comm'l. Ph. 3-4434

### McKay Slates Reclamation Project Tour

Gov. Douglas McKay will spend Wednesday, in company with Lee McAllister, in charge of the federal reclamation bureau office here, inspecting several reclamation projects in Jackson county.

The governor said a number of other persons interested in southern Oregon reclamation projects might join him at Medford.

Governor McKay will spend Tuesday forenoon attending the state police school at Oregon State college and will arrive at Ashland late in the afternoon to attend a banquet and first of a series of Shakespeare-dramas there.

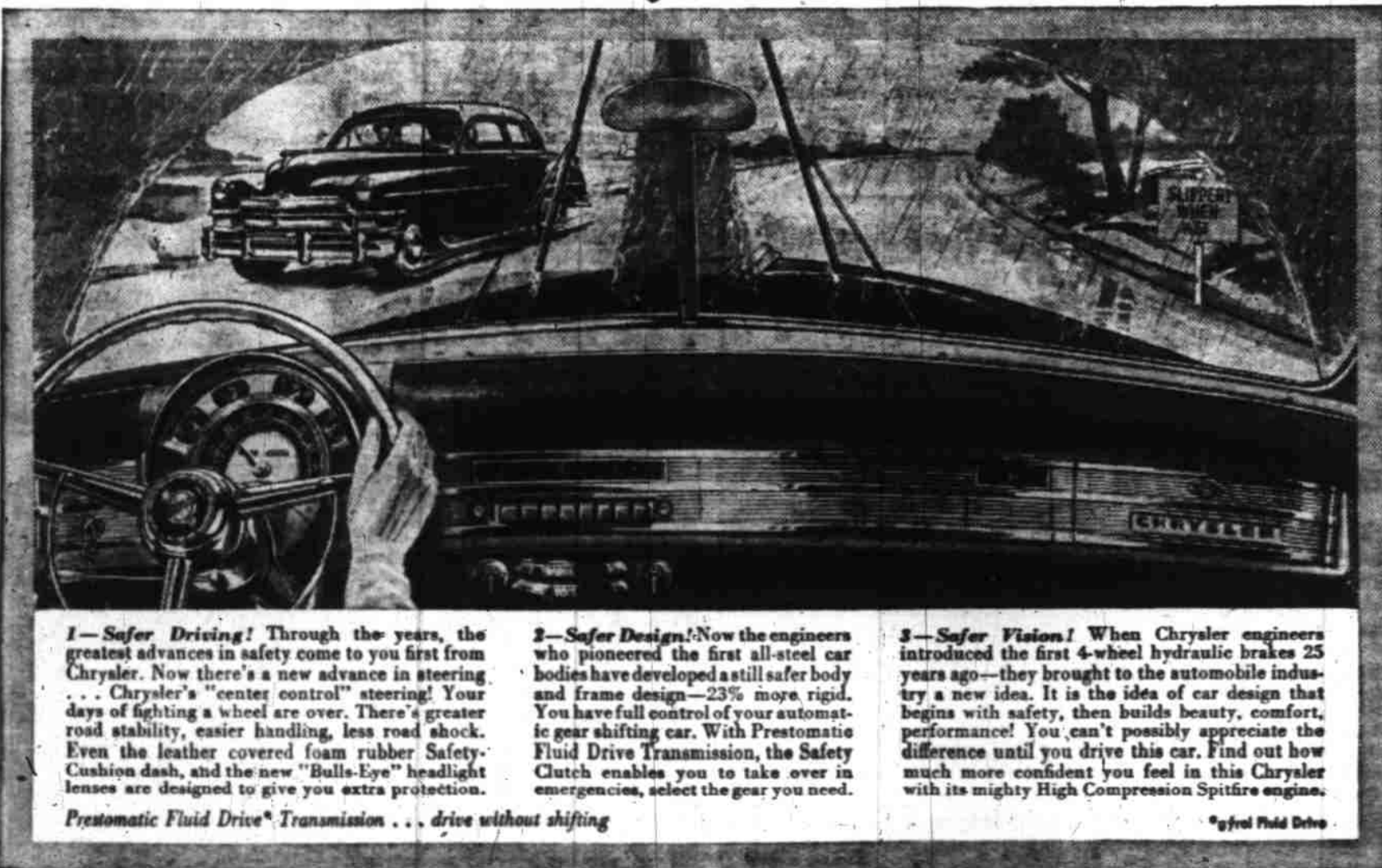
He will return here early Thursday to speak at the opening of the annual state American Legion convention. Mrs. McKay will accompany the governor to Ashland.

### Killed in Fall Against 25,000-Volt Power Line

ASTORIA, Aug. 1—(P)—An electrician fell against a 25,000-volt power line and was killed instantly here today. Service in the lower Columbia river area was disrupted 33 minutes.

Robert E. Ebert, Portland, slipped against the main bus bar while helping a construction crew cut in a feeder line for the Pacific Power and Light Company at the main plant here.

# Now... Chrysler Offers



- 1—Safer Driving! Through the years, the greatest advances in safety come to you first from Chrysler. Now there's a new advance in steering. Chrysler's "center control" steering. Your days of fighting a wheel are over. There's greater road stability, easier handling, less road shock. Even the leather covered foam rubber Safety-Cushion dash, and the new "Bulls-Eye" headlight lenses are designed to give you extra protection.
- 2—Safer Design! Now the engineers who pioneered the first all-steel car bodies have developed still safer body and frame design—23% more rigid. You have full control of your automatic gear shifting car. With Prestomatic Fluid Drive Transmission, the Safety Clutch enables you to take over in emergencies, select the gear you need.
- 3—Safer Vision! When Chrysler engineers introduced the first 4-wheel hydraulic brakes 25 years ago—they brought to the automobile industry a new idea. It is the idea of car design that begins with safety, then builds beauty, comfort, performance! You can't possibly appreciate the difference until you drive this car. Find out how much more confident you feel in this Chrysler with its mighty High Compression Spitfire engine.

## A Safer Car to Drive

Salem Automobile Co., Inc. • 435N. Commercial St.



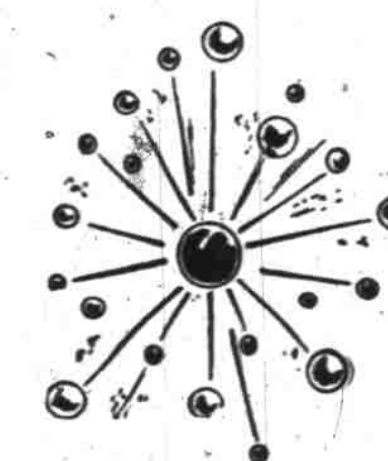
## "Activated" Shell Premium is the most powerful gasoline your car can use!

YES, many of today's engines have been stepped-up... they call for more powerful gasoline! Now Shell gives you the most powerful gasoline your car can use—Shell Premium—it's "activated." No other fuel can top its power in your car!

This is made possible by Shell's own, specially produced power components and by Shell's own blending methods!

Actually, Shell splits molecules to get more power for today's more powerful engines. So you get a gasoline that's "activated" 3 ways!

- 1. Activated for knockless power! Pulling hard in low gear or traveling at full throttle, Shell Premium delivers full, quiet power!
- 2. Activated for fast "getaway." Shell Premium delivers the extra power you can feel—no "balking," no "stuttering"—you go!
- 3. Activated for full mileage. Shell engineers "balance" Shell Premium so that every drop of fuel goes to work for you!



Activation makes the difference. Shell splits molecules: Shell scientists take the finest available crude—activate the molecules by splitting them and rearranging the atoms according to Shell's formula for a perfectly balanced gasoline. The result—Shell Premium, the most powerful gasoline your car can use!

