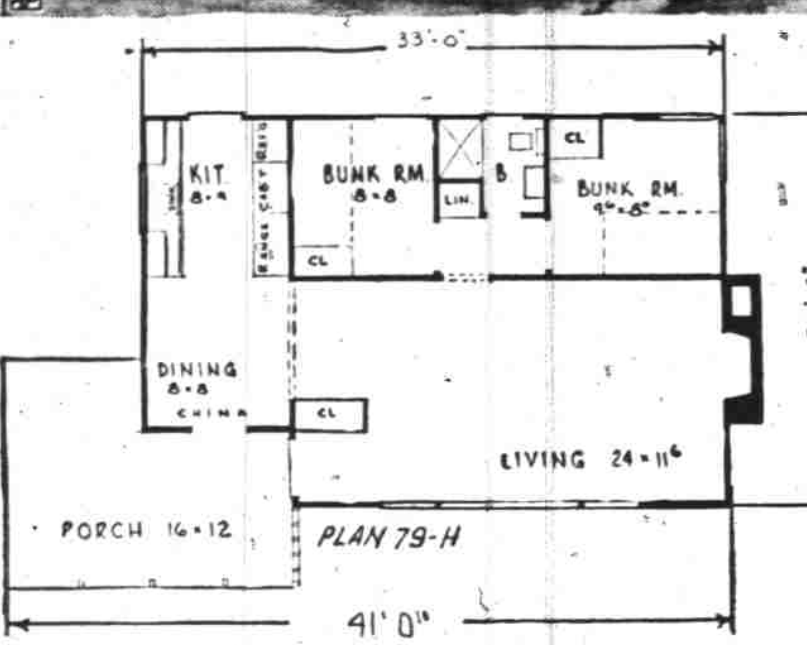


HOMES FOR AMERICANS



MANY VACATIONERS this summer are picking out sites for permanent summer homes at the beach, in the mountains, or on lake shores. Here is a popular plan with two bunk rooms to sleep four or more. A big living room with a fireplace and picture window and an efficient dining-kitchen combination feature the layout. This is Plan 79-H by Richard B. Pollman, 11711 East Eight Mile Road, East Detroit, Mich. The house covers 648 square feet and has 7,660 cubic feet. These figures can be used for local estimates on costs.

Salem Market Quotations

(As of late yesterday)

BUTTERFAT	83
Premium	81
No. 1	79
No. 2	76
WHOLESALE	56
Wholesale	56
Retail	71
EGGS (Buying)	71
Whole sale price ranges from 8 to 10 cents over buying price	
Extra large AA	56
Large A	53
Medium AA	53
Medium A	49
Pullets	32
Cracks	32
POLTRY	
12 Lb. hens	22
B Leghorn hens	17
C Leghorn hens	14
A colored hens	24
B colored hens	19
C colored hens	17
A colored fryers, 3 lbs. and up	32
B colored fryers	27
C colored fryers	16
A old roosters	13
B old roosters	10
C old roosters	9
LIVESTOCK by Valley Pack	
Fat dairy cows, 1000 to 1200	12.00
Cutter cows	8.00 to 11.00
Bulls	15.00 to 19.00
Good calves, 300-450 lbs.	17.00 to 19.00
Good veal 150 to 300 lbs.	20.00 to 22.00
Spring lambs	20.00 to 21.00
Feeder lambs	14.00 to 16.00
Ewes	2.00 to 3.00

Country points 2c less than first.

Butter—Wholesale f.o.b. bulk cubes to wholesalers: Grade AA, 93 score, 6 lb. lb., A, 92 score, 60c lb.; B, 90 score, 57c lb.; C, 89 score, 56c lb. Above prices are strictly nominal. A grade, medium, 53 1/2-55 1/2c; B grade, large, 48 1/2-51c.

Cheese—(selling price to Portland wholesalers): Oregon singles, 38 1/2-48 1/2c; Oregon 5-lb. loaf, 41 1/2-50 1/2c.

Eggs—(to wholesalers): A grade large, 59-57 1/2c; A grade, medium, 53 1/2-55 1/2c; B grade, large, 48 1/2-51c.

Live chickens—(No. 1 quality f.o.b. plants): Broilers, under 2 1/2 lbs., 27-28c; fryers, 2 1/2 to 3 1/2 lbs., 23-24c; roasters, 4 lbs. and over, 21-22c; Leghorns, 4 lbs. and over, 21-22c; Leghorns, over 4 lbs., 23c; colored fowl, all weights, 23c; old roosters, all weights, 18-19c lb.

Rabbits—(average to growers): Live white, 4-5 lbs., 19-21c; 5-6 lbs., 17-19c; colored, 2 cents lower; old or heavy does, 4-5 lbs., 8-14c lb.; dressed fryers, 55-57c lb.

Fresh dressed meats (wholesalers to retail): Beef, Steers, good, 500-800 lbs., 44-45c; commercial, 39-42c; utility, 35-36c; cows, commercial, 36-37c; utility, 32-33c; canner cutters, 22-27c.

Beef cuts—(good steers): Hind quarters, 85-95c; rounds, 53-55c; full loins, trimmed, 50-55c; triangles, 37-38c; square cuts, 33-40c; ribs, 35-37c; forequarters, 38-37c.

Veal and calf: Good, 41-44c; commercial, 36-41c; utility, 33-35c.

Lamb: Good-choice spring lambs, 43-50c; commercial, 45-46c.

Mutton: Good-70 lbs., down, 19-21c.

Pork cuts: Loin No. 1, 8-12 lbs., 55-57c; shoulders 16 lbs. down, 37-40c; spare ribs, 48-50c; carcasses, 43-52c; mixed weights \$3 lower.

Wool: Coarse, Valley and medium grades, 10c lb.

Mohair: Nominally 25c lb. on 12-month growth.

Country-killed meats: 30-36c lb.; other grades according to weight and quality with poor or heavier, 28-32c.

Hogs: Light hogs, 28-30c lb.; sows, 24-27c.

Lamb: Top quality, 45-48c lb.; mutton, 32-35c.

Beef: Canner cuts, 26-28c lb.; canner cutters, 22-24c.

Onions: Yellow Globe Jumbos, new crop Calif., med. and large, \$1.52-2.25; reds, \$2.00-2.50; white globes, \$3.50-4.00.

Potatoes: Russets, Deschutes, No. 1A, \$3.00-3.15; red potatoes, California long whites, size A, \$3.75-4.00; size B, 100 lbs., \$2.90-3.00.

Hay—following wholesale prices are strictly nominal: U. S. No. 2 green alfalfa or better, baled truck lots wholesale, Portland, 83c; U. S. No. 1 picked Timothy, 82c; oats, standard, 10c; mixed hay, unsorted clover hay nominally, 11 1/2-12c, depending on quality, baled, on Willamette Valley farms.

Portland Produce

PORTLAND, July 2 (AP)—Butterfat (tentative, subject to immediate change): Premium quality maximum to 1 percent acidity delivered in Portland, 61-64c lb.; first quality 59-62c lb.; second quality 55-58c. Valley

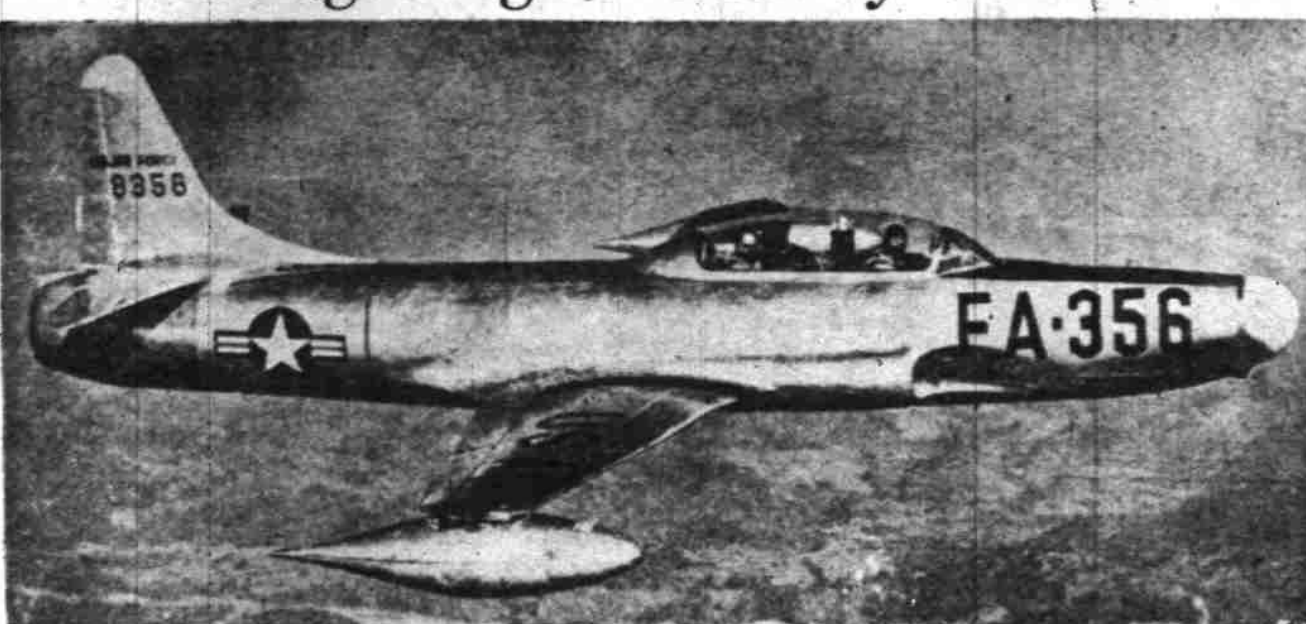
FHA State Finance Co.
FHA Loans
Long-Time Farm Loans
License S-216 and M-222
Personal and Auto Loans

Dr. R. Reynolds Clinic
Natu-Rectal Specialist
1144 Center St. Phone 3-9460
Salem Free Parking

We Want Your EGGS
Always a Dependable Cash Market.
If you don't bring them to Curly's—we both lose.
Curly's Dairy
Fairgrounds Road at Hood
Ph. 3-8783

Polk County Lime
Is Pleased to Announce We Will Welcome Orders for **LIME** For Agricultural Use. We Will Deliver and Spread, or Sell F.O.B. Plant. For Convenience Residents vicinity of DALLAS Phone 2087 Residents vicinity of SALEM Phone 2-6417 or 2-7003

New Night Fighter Built by Lockheed



BURBANK, Calif., July 2—This is the Air Force's new F-94 jet fighter plane built by Lockheed in Burbank, Calif., designed to fly and fight at night. It was described as a radically advanced version of the F-80 Shooting Star jet fighter, carrying two men, the pilot and the radar operator. (AP Wirephoto to The Statesman)

Reunion in New York



LOS ANGELES, July 2—Screen Actress Irene Dunne who received the University of Notre Dame's lactare medal, awarded annually to the outstanding Catholic layman, displays medal following the presentation. (L to R) Most Rev. J. Francis A. McIntyre, Miss Dunne's husband; Miss Dunne; her daughter, Mary Frances Griffin; Rt. Rev. Msgr. Fulton J. Sheen and Rev. John J. Cavanaugh, C.S.C., president of Notre Dame. (AP Wirephoto to The Statesman)

Named



LOS ANGELES, July 2—(Brig. Gen. W. A. Horton—abrig.) USMC, retired, of San Diego, Calif., was given a 120-day interim appointment as chief of police in Los Angeles, succeeding C. B. Horrall, who retired. The appointment may be renewed for an additional 120 days if a permanent chief is not selected in that time. (AP Wirephoto to The Statesman)

Wheat Sinks For Relatively Small Losses

CHICAGO, July 2 (AP)—Wheat sank for relatively small losses today under hedging pressure and some selling from traders who wanted to get out of the market over the long holiday. The market will be closed Monday, Independence day.

Wheat closed 1/4-1/2 lower, corn was 1/4 lower to 1/4 higher, oats were 1/4 lower to 1/4 higher, rye was 1/4 lower to 1/4 higher, soybeans were 1/4-1/2 higher and lard was 2 cents lower to 5 cents a hundred pounds higher.

There was some disposition on the part of professional traders to stay on the sidelines while awaiting Tuesday's cash wheat receipts at terminal markets. As is usually the case, the day after July 4 is expected to bring the largest receipts of the crop movement with subsequent hedging pressure.

Easiness in cash wheat prices at futures terminals was another factor in the wheat downturn. Losses of a cent or more were recorded in both southwestern and northwestern markets.

Another sustaining influence was an item in the Northwestern Miller, a trade publication, that the government had miscalculated its loan rates and they would have to be raised by two cents a bushel. This would make the loan \$2.21 at Kansas City and \$2.26 at Chicago. It was said the loans announced earlier this week had not calculated increased freight and handling charges.

TO RETURN HOME
—Murray D. Van Wagoner, U. S. Military Governor of Bavaria, plans to resign next November.

Auctions
THE E. Salem Auction Center offers a source of disposal Thurs. 7 p.m. for all types of Merchandise. If you can't bring your consignment, call 3-1221.

Livestock and Poultry
FOR SALE: 7 Angora Rabbits & 7 unit hutch, 630 Union St.
2 REG. Guernsey bulls, 15 mos. old. Very real, 3020 State St.
WANTED—Goats for brush pasture. Will buy or pasture free. Ph. 3-4106 or 3-1367.
FOR SALE—3 Shetland pony colts, 1 mare in foal to reg. Stallion Silver King 1 bay and spotted stallion. All gentle children to ride. Crystal Springs Ranch, Rt. 3, Box 721A, Ph. 3-1367.
WING'S Rabbitry needs fryer rabbits, top prices, 1965 State, 106F3.
A1 STUD Reg Palomino quarter horse H L Stud Jr Rt 3 Box 870
BONDED LIVESTOCK buyer, C McDaniel, 1127 S 25th Ph. 3-8147.
WANTED: Thin cows and heifers for feeders also butcher cattle. Give me bid if will cost you nothing. Earl Du Chien, 2495 N 3th Salem Phone 2-1658
NEW HAMP ticks every Thursday Ph 2-2861 Lee's Hatchery
WILL TRADE nice, gentle, registered saddle mare, due to foal in 3 weeks or 10 mo. old Jersey heifer, or big fat red fryer for baby or grain. Write Box 842 c/o Statesman.
BONDED livestock buyer Claude Edwards Rt 3 Box 989 Ph 3-1144
FOR SALE: Black 2 yr. old horse, call even, 2-2061.

Why Suffer Any Longer
When others fail, use our Chinese remedies. Amazing success for 6000 years in China. No matter what ailments you are afflicted—asthma, sinusitis, heart, lungs, liver, kidneys, gas, constipation, ulcers, diabetes, rheumatism, gall and bladder fever, skin, female complaints.

CHARLIE CHAN
CHINESE HERB CO.
484 N Commercial
SALEM, ORE
Office Hours 9 to 6
Even. and Sat. only

Situations Wanted

Mike's Septic Service
Tanks cleaned Rooted Router Service on Sewers. Phone 3-9488 or 3-3327.

Lloyd M. Hill, Inc.
Cat, Shovel and truck work of all kinds Phone 2-4297

SEWERS and septic tanks installed and repaired. Senari Bros Phone 25568

POES mimeographing typing service. Quality work. Lower prices. 665 N 16th Phone 3-2643

GENERAL cement contracting, 8 yrs in business. F.I.A. bank terms. Satisfaction guaranteed. Stanley Faye, 3-1015

Atmosphere Harley Fugh Ph 3-4692

L.H.D. CARE 183 S. 18th Ph 2-6876

TRACTOR work wanted with Ford tractor. Mixing, discing, plowing.

FURNITURE repaired & remodeled. Lee Bros Furn Refinishing Co 2-7001

Employment Agencies

OFFICE AND CLERICAL POSITIONS CONTACT

Commercial Placement Agency
360 State St. Phone 2-1488

For Sale—Miscellaneous

CORONA port. adding machine, A-1 condition. Call 3-2484

GIRL'S BICYCLE, \$27.50. Like new. Eves, 1573 Pearl St.

2 TABLE model radios, Arvin, \$10. Westinghouse, \$5. Apt. 4, basement, 646 S. Cantello

500 GAL. high pressure wtr. tank, bottom lavatory, 300 Evergreen Ave.

ABOLY 1200 ft. No. 6 weatherproof wire, five cedar poles 20 ft. Also insulators, \$50. Ben Brown, Ph. 2-0004

COLLAPSIBLE baby buggy, \$6. Ph. 3-4366

BABy BUGGY, bed and mattress, \$15. like new. Ph. 2-1213

COLDSPOT elec. refrig. 6 cu. ft. Excl. cond., \$80. Ph. 3-8643, 1321 N. 21st St.

OIL STOVE and 80 gallons of oil, cheap. 1085 Erixon

QUART jars, cheap. 1607 So Liberty St.

75 LB. Cooler, icebox. Very good cond., \$13. 1056 8th St.

CLOSING OUT THE ENTIRE STOCK, fixtures and equipment of the Fashion Lounge Dress shop, Tues. July 5th, 7:30 p.m. Retail inside spacious Greenwood Ballroom, 5 miles N. of Salem on 99E (Office furniture, clothing, fixtures, all Dept. Clean Woodco, Auctioneer.)

Large antique mahogany sofa. Family heirloom. Reasonable. Phone 2-4607.

2 BLACK AND TAN fox hounds: 2-1500 lb. work hounds with no. 1 pedigree. Inquire Glenwood Ballroom, 2-4607. Complete Surge milkers, Fred Auer, Dallas, Rt. 1, Ph. 3726

2 ACRES out back you cut. Charles Nyhus, near Auburn school, Rt. 5, box 259

2 WHEEL trailer, springs, 16" tires. Some new. Call 3-2737, 1715 N. Fruitland church.

FOR SALE MISC.
Closing out the entire stock, fixtures and equipment of the Fashion Lounge Dress shop, Tues. July 5th, 7:30 p.m. Retail inside spacious Greenwood Ballroom, 5 miles N. of Salem on 99E (Office furniture, clothing, fixtures, all Dept. Clean Woodco, Auctioneer.)

Large antique mahogany sofa. Family heirloom. Reasonable. Phone 2-4607.

2 BLACK AND TAN fox hounds: 2-1500 lb. work hounds with no. 1 pedigree. Inquire Glenwood Ballroom, 2-4607. Complete Surge milkers, Fred Auer, Dallas, Rt. 1, Ph. 3726

2 ACRES out back you cut. Charles Nyhus, near Auburn school, Rt. 5, box 259

2 WHEEL trailer, springs, 16" tires. Some new. Call 3-2737, 1715 N. Fruitland church.

Ringland's Kennels

Dogs boarded by day or month. We specialize in bathing and trimming. You are invited to inspect our new, modern kennel, 2675 Winola Ave., Salem Heights, Ph. 3-6859 or 2-5954.

VERY GOOD square dk. oak dining table & chairs, Ph. 3-1249, 235 Candalaria Blvd.

SLIGHTLY used dinette set, 2 piece dinette set, 30 gal. hot water heater, forced air duct, therm. vent, No. 10 cold trade for 7 in. elec. Skill saw & Skill sander. See at Rt. 8, Box 627, Reuben Paschke.

WHIZZER BIKE for sale Ph 2-0424

PICKUP BED for 1 ton Dodge truck 2588 Portland Rd. Ph. 2-4783

MAPLE 2 1/2 ft. birch set, practically new \$150. Ph. 3-6821 or 1694 N. Com'l.

DEEPFREEZE, Home Freezers \$129.95 and up.

U.S. GOV'T. inspected horse meat. Your guarantee, none better. The best food for man's best friend. Write Equine Packing, 1335 State St., Salem, Ph. 3-5072

USED SEWING machine, Ph. 3-3128

HOPALATES, fast, pressure cookers.

VEATER APPLIANCE CO.

USED DOORS & windows, Ph. 3-7238

NEWBERG Type River Bottom Top Soil All kinds, PH-Run, Gravel, Crushed, Sand, Mix, Concrete Pipe and Tile, Septic-Tanks; Reinforcing Steel.

OREGON GRAVEL CO.
1405 N. Front St. Phone 3-3417

FARMER'S Attention—Trench, concrete, rollers, milk pasteurizers, close-out prices.

VEATER APPLIANCE CO.

PEAT MOSS, full bales \$3.95, Northwest Poultry.

EVINRUDE 3 power outboard motor, Winchester 20 gauge shot gun, pole & reel, 1635 N. 20th, Ph. 2-4700

Dental Plate Repair

Bring or Mail Your Plates for Repair DR. HARRY HENNING, DENTIST, Adolph Bldg., State & Com. Ph. 3-3311

Room and Board

BOARD & room, 850 E. St. Ph. 3-8706

WISH to room and board employed lady or lady and child, near downtown, home privileges, Ph. 3-8406

RM. BOARD, private home, \$25 wk. bus. hrs. 1417 N. Commercial, near free boat, Ethel Fritz, Delake, Oregon, Reservations

BETTER CARE FOR LIGHT MENTAL COLONIA MANOR, 6821 S. E. 112TH AVE. PORTLAND, ORE. PHONE TABOR 8526

For Rent—Rooms

VERY NICE ROOM, private home, gentleman 985 N. Sumner, Ph. 3-6368

SLEEPING RM. private home, bus. restaurant, gentlemen, 1076 Highland Ave.

ROOMS, Kit, priviledge, Ladies only, 520 Statesman St.

SLEEPING room for rent, 607 N. Commercial.

ROOM with kitchen priviledges, 826 N. N. 14th, Ph. 3-9408

NICELY FURN. Bdrm. close in, 696 N. Cottage, Ph. 3-9430

SLEEP RM. priv. ent. Ph. 24427

SLE. rm. 2131 Center, Ph. 3-6643

CLEAN, bright, new, near school, 2455 D St. or Ph. 3-7809

For Rent—Apartments

APARTMENT, All modern, nicely furnished, cool, attractive and close in. For 1 or 2 408 N. Winter St.

LARGE, completely furnished apartment to sublet. Contact Mr. Harry Scott 147 S. Com'l St.

MOD 3 rm. unfurn. apt. 386 Bellevue, 4411 STATE, 3 rm. furnished apt. private bath.

2 RM. turn apt, upstairs, 860 Trade St.

2 RM. apt. close in, completely furn. and utilities.

FURN. 3 RM. Court apt. Available July 10 1548 S. 12th.

2 AND 3 RM. FURN. apts. Will take children no drinking, 2310 N. 4th St.

FURNISHED 2 RM. apt. 158 S. Cottage.

PARTLY furn. 3 rm. apt. Private ent. and bath. Call 3-8933

W. SALEM court apt. 2 rm. unfurn. bath kitchenette, elec. range, Ph. 29609

TURN 2 1/2 rm. apt. Tractor house, 160 Union, Ph. 3-9833

APPEALING close in apartment 2 adults. Utilities furnished. Available July 10, 168 N. 12th.

STUDIO APT furnished, kitchenette. For business girl, 1370 Kenneketa.

NEAR STATE house, completely furnished. No children or pets. Ref. Ph. 3-4929

SPACIOUS APT in beautiful court, unfurn. except for refrigerator and range. Auto laundry, Call at 907 S. 13th after 10 a.m.

For Rent—Houses

MODERN 5 rm. hse. on Liberty rd. Apply J. C. Henry, Rt. 9, Box 784

NICE newly decorated 2 B.R. lower family home in \$50 mo. Ph. 3-4697

1 BDRM. HOUSE, 60 Lana Ave.

3 RM. HSE. with bath, completely furn. with garden space. Rt. 2, Box 1178

FOR RENT OR LEASE—Small, modern 2 BR home at 1105 Jefferson St. by July 15. Elec. stove furn. \$60 per mo. Call 2-8482

2 B.R. suburban home, 870 Ph. 3-8561

3 RM. mod. newly dec. home. Automatic heat, partially furn. \$100. Ph. 2-8476

WHY RENT? \$1000 down, \$50 month buys neat bungalow, 2 1/2 bdrms, 2 1/2 baths, 2 1/2 car. See E. M. Hunter, Real Estate, 717 S. Com'l Ph. 2449-25497

AVAILABLE now, 2 B.R. unfurn. modern country home, \$50 mo. Ph. 2-2031

Why Pay Rent?

NEW 3 & 2 BEDROOM HOMES
N.W. floors, furnace, city water, garage, large lot, paved st., utility room, built-in low as \$29,900

L. E. Klump, Real Estate
486 N. Church Ph. 2-7642, Eve. 2-6129

3 B.R. FURN. home for lease, 367 N. High. Ph. 2-8200

RESPIRERS, U. pick. 10c lb. Sat. Sun. & Mon. only, J. C. O'Reilly, Rt. 4, box 82, near Pringle sch. south.

SEVERAL different varieties of cherries, 3c lb. U. pick. D. A. Fish, 1488 S. Com'l Ph. 2662

RESPIRERS, Frigaard's Fruit Stand, 1/4 mi. N. Keizer School, Ph. 2-1267

LCR, E. M. K. red raspberries, \$2.00 case, 3743 Brooks St. Ph. 2-4378

Produce

BIG, LUSCIOUS, raspberries delivered anywhere in Salem, \$1.90 crate. Ph. 2-3555

CHERRIES! CHERRIES!
Royal Annes, Lamberts & Bings, 2c a lb. You pick. Bring your own containers. 21 S. Box 42, 1 mi. N. of Keizer school. F. O. Muckridge.

Building Materials

USED LUMBER, bricks, windows, etc. Laundry trays \$3.00, Bt. 6, Box 2727 1/2 mi N. Fruitland church.

CELANO SHINGLES—SHAKES
May be supplied with Tillamook Coast, Grande Ronde Inland, and Cascade High Mountain No. 1 shingles \$2.25 sq. No. 2 \$2.00. Shingles 18 in. shakes painted with undercoat \$12.80 sq., unpainted \$9.60 sq. Ted Muller Building Supplies, Ph. Salem 2-1198

SKILL-TOOL Rental Service, Valley Farm Store, 4345 Silverton Rd.

SPECIAL—Cedar siding 3/4" x 8" Random lengths, G grade, \$85 per M. Keith Brown, Front Court, St. Salem

NEW WOOD, all thicknesses. Special prices on insulation, 16in x 22 in ceiling tile, elec. water heater and wallboard for bathroom, kitchen or utility room. C. G. Long Ph. 3-5821

OFFSET Printing, Prange road, 1/2 mi. or Chrome 20c pr. Chrome pulls 10c pr. Plastic pulls 5c ea. Beavercraft Co. 575 N. 1st

HARDWOOD FLOORING, all grades, from \$95 per M and up. Keith Brown, Front & Court Sts., Salem.

3 IN SHEET ROCK, 4 1/2 cents ft. 1/2 in. 3 1/2 cents ft. 3/4 in. rock lathe, solid sheets 31 cents yd. C. G. Long, Ph. 2-5821, 1/2 mi. N. of Keizer.

Wanted—Miscellaneous

SMALL used add. mach. & small food scale Write Box 1354 Stayton

NEED AT ONCE, large quantity used furniture, including: 1200 Woodry IRON HAULERS, 1c lb. or \$20 per ton for old farm equipment: plows, harrows, discs, tractors or tracts. Ph. 3-1221

PIANO TUNING, repairs, Wills Music Store Salem

Wanted—Furniture

USED FURNITURE Phone 3-9183

Miscellaneous

HAVE YOUR Singer sewing machine repaired by a qualified technician representative Ph. 3-3512 for free pickup & delivery service, on all makes of machines. Free estimates. No. 1000. Work is started Singer Sewing Machine Co., 130 N. Commercial

Salem Sand & Gravel Co.

Contract Work
Roads - Clearing - Ditching
WANT TO USE Cement, Gravel, Equipment Rental

15 B-ly yds	\$12.00 per hr.
18 B-ly yds	9.00 per hr.
D-7 Cat & Dozer	10.00 per hr.
D-8 Cat & Dozer	8.50 per hr.
D-4 Cat & Dozer	7.00 per hr.

Evenings 1-8248 or 2-4400
Salem, Oregon

Water Wasting

WATER WASTING! Domestic or irrigation. Duffield Bros, Rt. 9, Box 58, Phone 2-1312 or 2-2795

WANT TO USE Cameras and lenses. McKean Photo Shop 435 State

AUTO painting just a shade better by RAY ETTER Call Shrook Motor Co. 3-4101

Mattresses Capital Bed Co. Ph. 3-4068

Dental Plate Repair

Bring or Mail Your Plates for Repair DR. HARRY HENNING, DENTIST, Adolph Bldg., State & Com. Ph. 3-3311

Room and Board

BOARD & room, 850 E. St. Ph. 3-8706

WISH to room and board employed lady or lady and child, near downtown, home privileges, Ph. 3-8406

RM. BOARD, private home, \$25 wk. bus. hrs. 1417 N. Commercial, near free boat, Ethel Fritz, Delake, Oregon, Reservations

BETTER CARE FOR LIGHT MENTAL COLONIA MANOR, 6821 S. E. 112TH AVE. PORTLAND, ORE. PHONE TABOR 8526

For Rent—Rooms

VERY NICE ROOM, private home, gentleman 985 N. Sumner, Ph. 3-6368

SLEEPING RM. private home, bus. restaurant, gentlemen, 1076 Highland Ave.

ROOMS, Kit, priviledge, Ladies only, 520 Statesman St.

SLEEPING room for rent, 607 N. Commercial.

ROOM with kitchen priviledges, 826 N. N. 14th, Ph. 3-9408

NICELY FURN. Bdrm. close in, 696 N. Cottage, Ph. 3-9430

SLEEP RM. priv. ent. Ph. 24427

SLE. rm. 2131 Center, Ph. 3-6643

CLEAN, bright, new, near school, 2455 D St. or Ph. 3-7809

For Rent—Apartments

APARTMENT, All modern, nicely furnished, cool, attractive and close in. For 1 or 2 408 N. Winter St.

LARGE, completely furnished apartment to sublet. Contact Mr. Harry Scott 147 S. Com'l St.

MOD 3 rm. unfurn. apt. 386 Bellevue, 4411 STATE, 3 rm. furnished apt. private bath.

2 RM. turn apt, upstairs, 860 Trade St.

2 RM. apt. close in, completely furn. and utilities.

FURN. 3 RM. Court apt. Available July 10 1548 S. 12th.

2 AND 3 RM. FURN. apts. Will take children no drinking, 2310 N. 4th St.

FURNISHED 2 RM. apt. 158 S. Cottage.

PARTLY furn. 3 rm. apt. Private ent. and bath. Call 3-8933

W. SALEM court apt. 2 rm. unfurn. bath kitchenette, elec. range, Ph. 29609

TURN 2 1/2 rm. apt. Tractor house, 160 Union, Ph. 3-9833

APPEALING close in apartment 2 adults. Utilities furnished. Available July 10, 168 N. 12th.

STUDIO APT furnished, kitchenette. For business girl, 1370 Kenneketa.

NEAR STATE house, completely furnished. No children or pets. Ref. Ph. 3-4929

SPACIOUS APT in beautiful court, unfurn. except for refrigerator and range. Auto laundry, Call at 907 S. 13th after 10 a.m.

For Rent—Houses

MODERN 5 rm. hse. on Liberty rd. Apply J. C. Henry, Rt. 9, Box 784

NICE newly decorated 2 B.R. lower family home in \$50 mo. Ph. 3-4697

1 BDRM. HOUSE, 60 Lana Ave.

3 RM. HSE. with bath, completely furn. with garden space. Rt. 2, Box 1178

FOR RENT OR LEASE—Small, modern 2 BR home at 1105 Jefferson St. by July 15. Elec. stove furn. \$60 per mo. Call 2-8482

2 B.R. suburban home, 870 Ph. 3-8561

3 RM. mod. newly dec. home. Automatic heat, partially furn. \$100. Ph. 2-8476

WHY RENT? \$1000 down, \$50 month buys neat bungalow, 2 1/2 bdrms, 2 1/2 baths, 2 1/2 car. See E. M. Hunter, Real Estate, 717 S. Com'l Ph. 2449-25497

AVAILABLE now, 2 B.R. unfurn. modern country home, \$50 mo. Ph. 2-2031