

YOU'RE INVITED

TO THE

K S L M



Only a radio technician knows what all the dials and gadgets are for on a modern 1000 watt transmitter. Leo Erickson and Bob Eaton, technician-announcers point out a few of them.



"The Bargain Counter," popular KSLM quiz show heard each morning at 9 a. m., is conducted by Bob Morse with the phone, and Tiny Carlton, chief engineer.



When you visit the downtown office of KSLM in the Sengler Hotel you are most likely to meet Earle Heardrick, Business and Commercial manager, shown here dictating to Eleanor Francisco, stenographer, while Edler Koenig, receptionist and traffic supervisor answers one of the many calls received daily regarding KSLM programs.

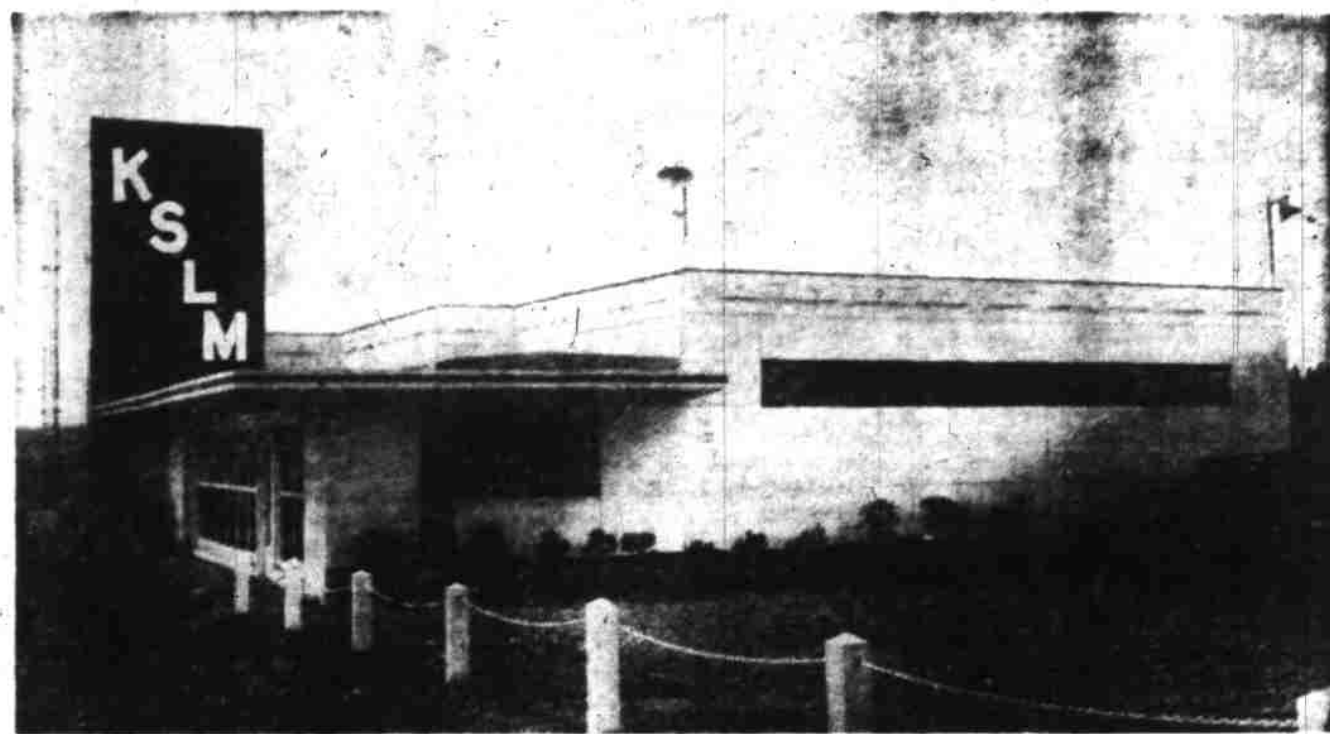


Shown here is Dave Hoss, narrator on the "Medical Highlights" broadcast heard each Sunday evening at 8:30, conferring with Jerry Webb, Program Director for KSLM.



Blaine Hanks, KSLM announcer, featured on "Sick's Select News" heard nightly at 10:15 p. m.

**1000 Watts
Full Time Power**



Studios and Transmitter on Kingwood Heights

"OPEN HOUSE"

SUNDAY 9 a. m. to 10 p. m.

KINGWOOD HEIGHTS

K S L M

"RADIO SALEM"

Schedule of Events

1:45-2:00 P. M.

"Organ Concert" featuring Eddie Sybing at the Console of the Wurlitzer Electric Organ. (Courtesy Wills Music Store).

3:45-4:00 P. M.

"Meet The Staff". Featuring interviews with the Personnel of KSLM by Dave Hoss.

7:00-8:00 P. M.

"DEDICATION"

Featuring . . .
GOVERNOR DOUGLAS MCKAY
MAYOR R. L. ELFSTROM
REV. DUDLEY STRAIN

MUSIC--ENTERTAINMENT

- ★ "The West Coast Ramblers"
- ★ Edith Fairham, vocalist
- ★ Jean Rickli, pianist
- ★ Betty Kuhlman, violinist

To The Public

May I take this opportunity to extend a personal invitation to each and everyone to visit our new studio and transmitter building on Kingwood Heights. It has been your loyal and consistent approval of KSLM's daily broadcasts that has encouraged us to make this expansion, through which we hope to continue bringing you the best in radio entertainment.

Sincerely yours,

Glen McCormick, President
OREGON RADIO, Inc.

1390 Kilocycles

REGIONAL SERVICE TO THE
MID-WILLAMETTE VALLEY