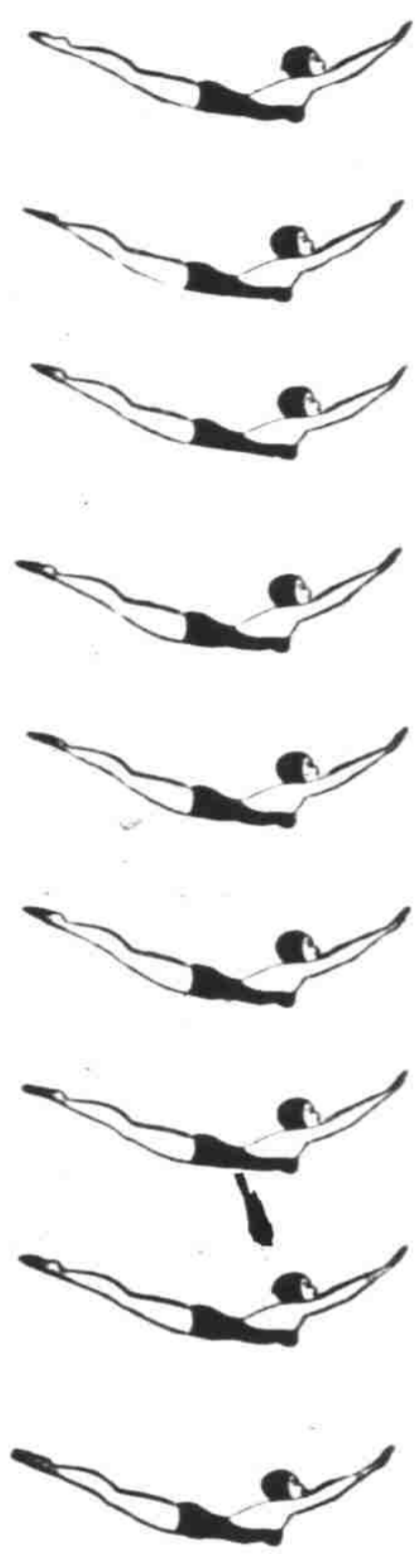


# You'll be Slick as a long whistle in your Jantzen



And you'll be whistling yourself when you whisk yourself into one of these marvelous figure-control Jantzen swim suits with the marvelous uplifting bras - and you'll honestly be slick as the lowest, longest whistle you ever heard. Jantzen swim suits come in new and exclusive Lastex-powered fabrics . . . light weight, quick-drying and figure-controlling . . . in glorious sun-stopping colors.

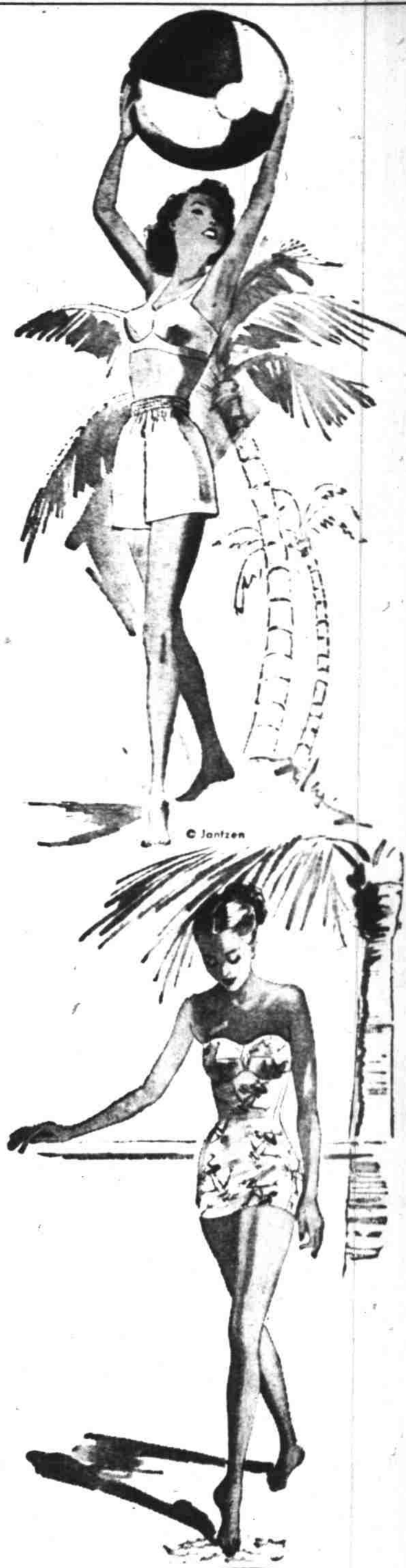
Shop early for your Jantzen swim suit!

### JANTZEN FASHIONS AND COLORS

Minimized trunk with shirred leg hems . . . Phantom panel skirt of slimming smoothness . . . Strap or strapless for swimming or sunning. Sensational bra design, enhances, supports the bust. The Lite-boned "Stay-bra" is another Jantzen specialty!

### COLORS

Lemon tint . . . powder pink . . . seafoam . . . ice blue . . . peacock blue . . . taffy tan . . . flamingo . . . chalk white . . . Rio red . . . black and Royal Hawaiian.



# Miller's

Women's Sport  
SHIRTS  
\$3.95

Your summer outing, vacations are never complete without a brace of sport shirts in the much wanted pastel shades of new greens, blues, pinks, yellows, etc. And these are made of men's sportswear fabrics. Tailored collars with the long points. See these in the sportswear section, 2nd floor.

SALE! RAYON  
CREPE and SATIN  
NIGHT GOWNS

**\$3.95**  
Regular \$5.95

For the thriftpwise, here's good shopping! Crepe and satin rayon gowns in dainty lace trimmed or plain tailored. In pastel pinks, blues, peach, etc.

Sale! One-Piece  
FOUNDATIONS  
**\$5.95**  
Regular \$12.50

One piece foundations with lace bra and boned fronts. Light weight and cool! Sizes 40 . . . 41 . . . 42 only! Expertly fitted of course. 2nd floor.

### JANTZEN SWIM SUITS MADE EXCLUSIVELY OF JANTZEN'S FIGURE CONTROL FABRICS . . .

Jantzen's novelty textured pique, a two-way stretch fabric . . . Their skin-smooth fitting satin lastex . . . pick and pick satin lastex . . . hand screened prints in lastex . . . figure-hugging Nylastic . . . sharkskin lastex . . . sheer-weight nylon lastex . . . woolite lastex Cordo lastex, all are here awaiting your choice today!

Save 40%  
On Fine

### LUGGAGE

Sale of Odds  
and Ends

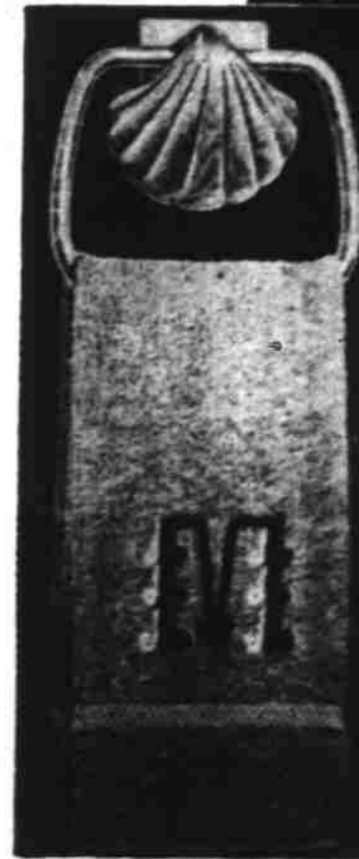
TODAY AND SATURDAY  
ONLY!

Sale of odds and ends of luggage at about 40% discount! Airplane style with leather trimmings. Fully reinforced throughout and guaranteed to last.

- OVERNITE CASE . . . \$8.95- \$9.95
- WARDROBETTES . . . \$14.95
- BUS CASES, 26-inch . . . \$12.95
- COSMETIC CASES . . . \$10.25

SELECT YOUR  
LUGGAGE  
NOW AND  
SAVE!

Main Floor



### Malibu Sea-Shell TOWEL HOLDER

Very few bathrooms have enough towel racks to accommodate the average family. This new plastic creation not only solves your extra towel problem but adds to the charm and fitness of your bathroom. Malibu's loop allows room for a smooth 8 inch fold. Now . . . an individual towel holder for him, for her, for guests . . . and for the "small fry" too! Just think, a towel holder placed at any height for children to reach. Malibu may be moved up as child grows taller, without leaving ugly holes in wall. Selfmount makes this possible. No nails, screws, bolts or suction cups needed. Selfmount, the miracle mounting practice adheres to tile, glass, ceramics or enameled surfaces. Malibu for you - in 4 beautiful pearlcoat pastel colors: blue, yellow, rose, green, in attractive gift box, with Selfmount included. **\$2.95**

Pat. Printed U.S. & Can.

The perfect companion piece to Selfmount Sea-Shell Stacking Drawer