

**Kliwer To Manage
Mill City Business**

STAYTON—Porter and Lau Radio and Appliance store reported this week that Harold D. Kliwer

of Mill City has accepted the management of the company's store in that city.

Kliwer, in charge of the meat department in the Fleetwood store for eight years, as mayor of Mill City.

**STRETCH YOUR DOLLARS
WITH UNIVERSAL'S SENSATIONAL
3-IN-1 OFFER!**

Don't miss this limited-time, money-saving opportunity! See the new Universal 2-Speed Washer. Notice the gentle action of the LOW Speed . . . watch how REGULAR Speed gets heavy pieces whiter! Buy today. Get without extra charge the convenient Pearl-Wick Hamper, Cordomatic Clothesline Reel.



BUY THIS



GET THIS

PEARL-WICK Jumbo Hamper valued at \$8.50. Made from triple-strength "Duroweave" with woven-in steel ribs. Will not dent or bulge. Self-ventilating. Celanese plastic pearl cover.

PLUS THIS



A handy means for drying clothes indoors. 18 ft. of durable, plastic line rewinds automatically. Just the thing for that everyday wash. Valued at \$4.95

OFFER GOOD FOR LIMITED TIME ONLY

PRICED FROM **\$129.95** PUMP EXTRA MODEL SHOWN \$169.95 WITH PUMP

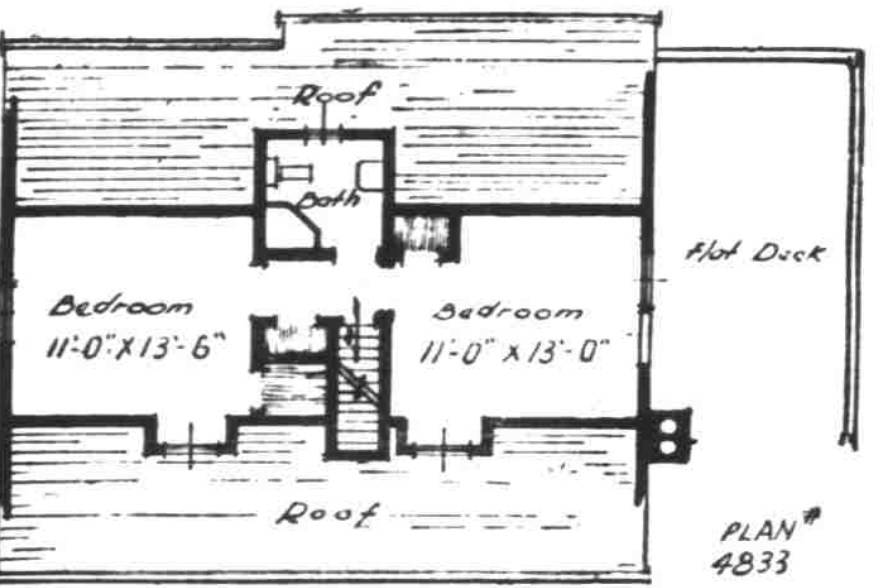
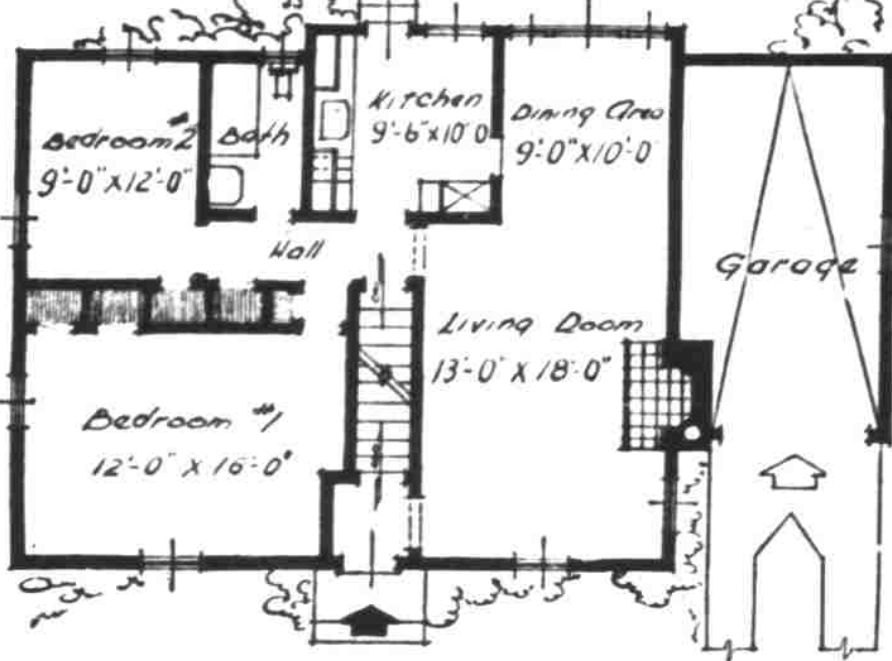
UNIVERSAL

YEATER APPLIANCE CO.

255 N. Liberty

Phone 3-4311

HOMES FOR AMERICANS



The Cape Codder holds its popularity in the small house field. Here is Plan 4833 by Arthur E. Allen, 90-04 161st St. Jamaica 2, L. I. N. It combines the advantages of the "economy house" on its first floor, but has space for two more rooms upstairs and allows for garage. The house covers 1,020 square feet and contains 21,500 cubic feet, without garage.

Turner — Donna May Peterson and Darlene Yeager arrived here Saturday by plane from San Francisco. Miss Yeager will travel to Idaho to attend the wedding of her brother, Dale Yeager.

Amity — Myrtle circle, Neighbors of Woodcraft, will install new officers at a public ceremony Monday, April 25, at the IOOF hall starting at 8 p.m.

Salem Heights Club Plans Family Night

SALEM-HEIGHTS — Hobart Smith presided at a meeting of the Salem Heights Community club Thursday.

The club voted to continue meeting next year and to help the Womans club to operate the hall as community project. The fire truck committee gave a report of their progress of a rural fire district. O. W. Gorton was named as chairman of the nominating committee.

The May meeting will include a covered-dish dinner starting at 6:30 p.m., and will also be a family night. Mrs. Lyle Bayne is in charge.

Turner Residents To Form New Farm Bureau

TURNER — The newly organized Farm Bureau at Turner will meet in the Turner school auditorium Tuesday, April 26, at 8 p.m. A group of local farmers met during the winter months, and after checking, decided to join the National Farm Bureau. Farmers joining at the next meeting will be considered charter members. Arrangements are being made to have Lowell Steen, state president, at the next meeting, which is open to the public. A program is being planned, and refreshments will be served.

Stock Market Loss Retrieved

NEW YORK, April 23—(AP)—The stock market ran into heavy weather this week before reaching clear waters today.

From Monday through Friday nearly \$1,500,000,000 was lopped off the market value of all shares listed on the exchange. Demand revived Saturday and a small part of the week's losses retrieved.

Volume amounted to 340,000 shares, in contrast with 410,000 a week ago. Of the 674 individual stocks which traded, 364 advanced and 123 declined.

The Associated Press average of 60 stocks moved up 2 of one point to 62.8, the only gain of the week. At the close a week earlier the average stood at 64.

The Thursday break in the market carried the price level to a low since February 28 and not far from the 1948-49 low.

C of C to Hear Dr. A. L. Strand

Dr. A. L. Strand, president of Oregon State college, will address Salem Chamber of Commerce Monday noon at the regular luncheon. His subject will be related to education.

A Texan by birth, Strand assumed the OSC presidency in 1942 after serving Montana State university in the same capacity. His scientific work has been in biology, specializing in insect physiology and ecology. During the 30s, he directed anti-gashopper campaigns in areas that were critically infested.

Beth Sellwood's Story Told



Beth Sellwood, Salem route 2, president of the Chin Up Club of Oregon, shown holding the bound copy of Coronet magazine given her by Gov. Douglas McKay through the publishing company. The current issue of the national magazine contains the story of Miss Sellwood, her being struck down with infantile paralysis when only a child, and her constant fight since then to help other crippled and handicapped persons overcome their handicaps through the Chin Up club. (Statesman photo.)

AT PENNEY'S Salem, Oregon
WOMEN'S COAT CLEARANCE

Out They Go!
ALL COATS REPRICED INTO 3 GROUPS
Sorry, No Coats Reserved

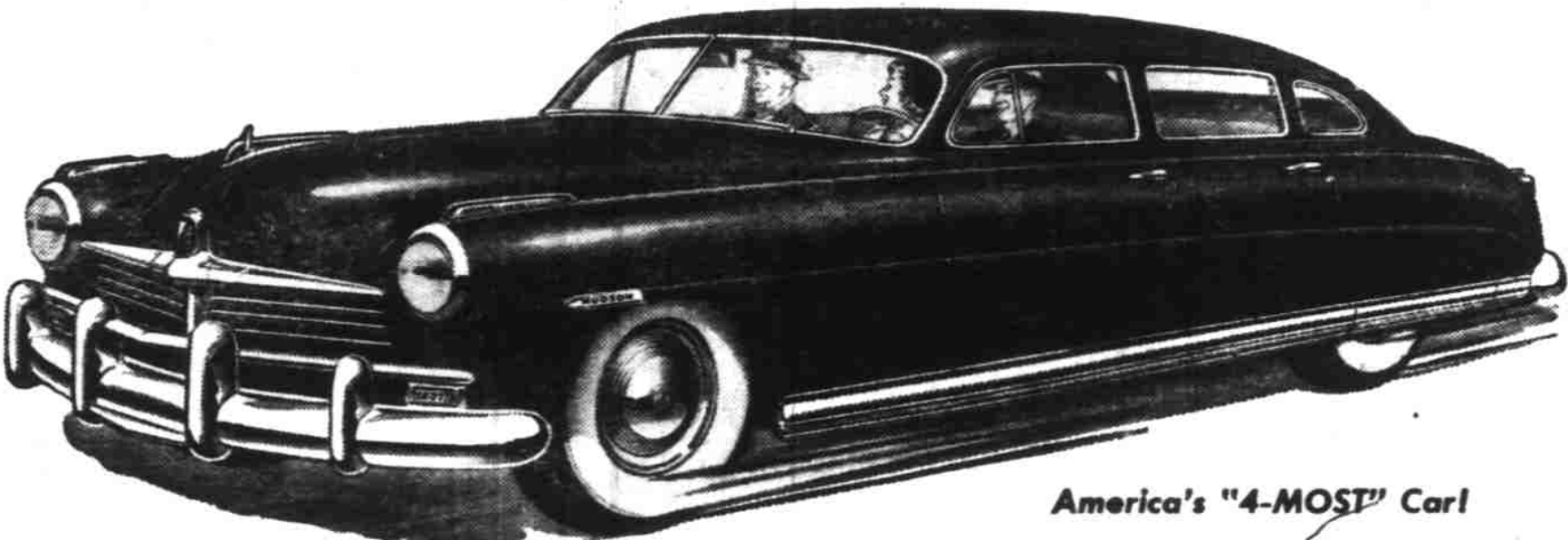
Women's 100% All Wool Coats
Colorful Tweeds, Smart Coverts
\$15.
The latest in coat styling at rock bottom price! Smart modified flare or three-way coats. Clever Barrymore or Peter Pan collars. Flattering yoke backs, stylish novelty cuffs. Skipper blue, jade green, Chinese red, gray, beige. Sizes 8 to 16.
SECOND FLOOR

Women's 100% All Wool Coats
Sheer or Worsted Coverts, Tweeds and Gabardines
\$25.
Outstanding quality coats formerly of much higher priced lines now slashed in price for immediate clearance. Season's latest styles with yoke backs, popular modified flare, smartly detailed cuff and pocket treatments. Skipper blue, beige, gray, pink, summer brown. Sizes 10 to 18.
SECOND FLOOR

Women's 100% All Wool Coats
Worsted Sheer Gabardines and Sharkskins
\$35.
Deluxe QUALITY COATS formerly our very highest priced coats, now priced at this sensational savings for you! Most stylish spring fashions, finest fabrics, exquisite in detail and expertly tailored. Silver gray, skipper blue, Chinese red, aqua, jade, green, lido blue, pink. Sizes 8 to 18.
SECOND FLOOR

Ride the most beautiful, most roomy, most road-worthy, most "all-round-performance" car in America! Enjoy a thrilling . . .

Revelation Ride



America's "4-MOST" Car!

Why be satisfied with vague claims of "more" of this and "more" of that in a motor car? The New Hudson brings you—not just "more", but the most of all the things you want most! It's America's "4-most" car. Most Beautiful! Millions vote the New Hudson "America's most beautiful!" No other car could so perfectly express artists' concepts of "the car of the future"—for only Hudson, with its "step-down" design, has the low build that is necessary for such beauty. The New Hudson is the lowest-built car on the highway—yet there's full road clearance. Most Roomy! Hudson brings you—not just "more", but the most seating room in any mass-produced car . . . the most efficient use of interior space. Head room and leg room to spare! Most Road-worthy! Even at high

speeds or on winding roads, you ride relaxed—because your New Hudson hugs the highway . . . has the lowest center of gravity in any American stock car. You ride clear ahead of rear wheels, and within the base frame—down where the riding is most smooth, most steady, most safe. Most All-round Performance! Again, Hudson brings you—not just "more", but most! The all-new, high-compression Super-Six engine is the most powerful American Six. Or you may choose the even more powerful Super-Eight. And Hudson brings you Center-Point Steering, Triple-Safe Brakes and many more high-performance features—all engineered for long life, low upkeep cost. Come in and enjoy a Revelation Ride in the New Hudson—America's "4-most" car!

NEW
Hudson
ONLY CAR WITH THE STEP-DOWN DESIGN



40 YEARS OF ENGINEERING LEADERSHIP

HUDSON PRICES START AS LOW AS **\$2552.61**

for the Hudson Super-Six 3-Passenger Coupe, delivered here, fully equipped, including Weather-Control Heater-Conditioned Air System. Local taxes to be added.

AND IN ADDITION, ONLY HUDSON BRINGS YOU All these "most-wanted" advantages: Automatic gear shifting with Drive-Fluter Transmission . . . 121 h.p. high-compression Super-Six Engine, most powerful American Six, or masterful 128 h.p. Super-Eight . . . Chrome-Alloy Motor Block . . . Dual Carburetors . . . Fluid-Cushioned Clutch . . . Masabilt Body-and-Frame . . . Safety Jack Pads under frame . . . Full-View Curved Windshield . . . Wide-Arc Vision . . . No-Glare Instrument Panel . . . Interior Door Handles, Window Controls in recessed door panels . . . Super-Cushion Tires . . . Safety-Type Rims . . . Weather-Control Heater-Conditioned Air System

HERE'S WHERE YOU CAN ENJOY YOUR REVELATION RIDE

SHROCK MOTOR COMPANY

Chemeketa and Church

Phone 3-9101