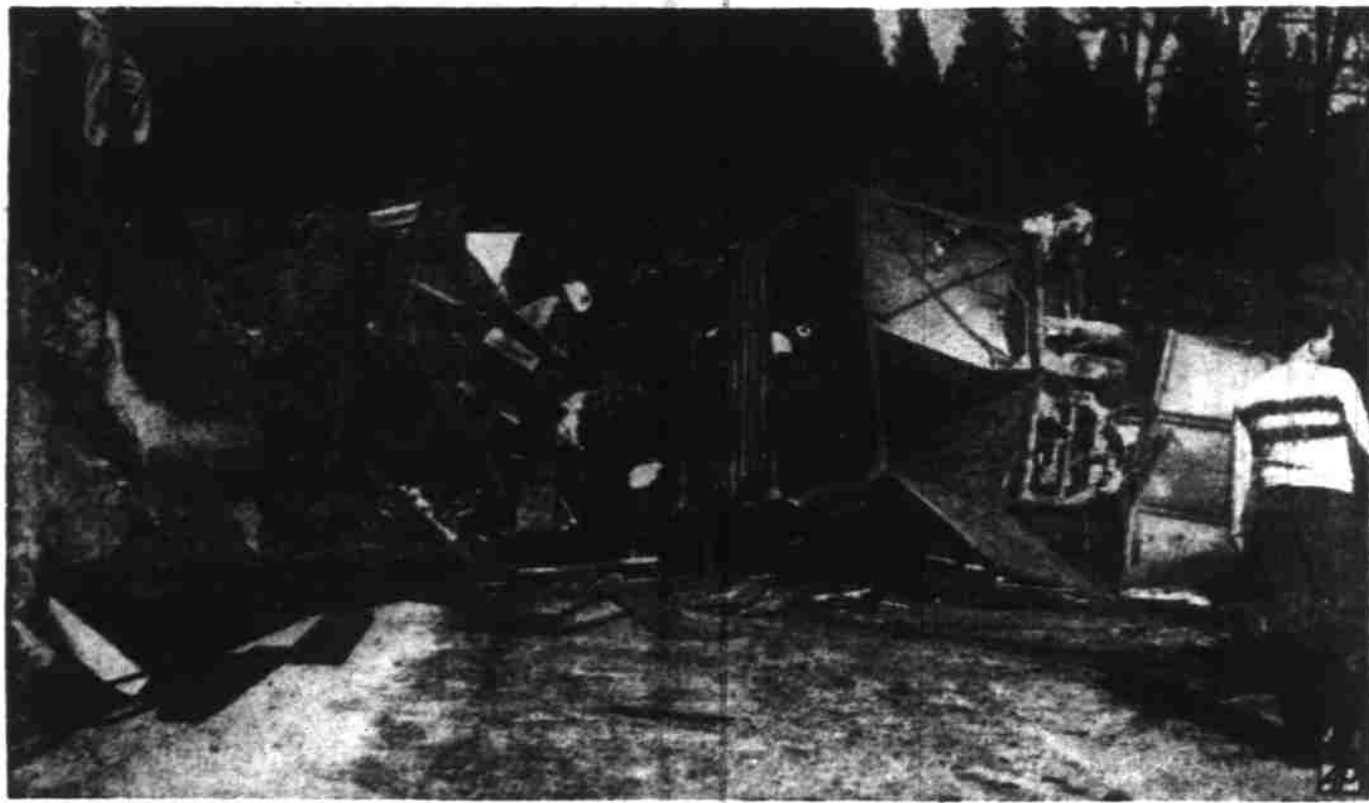


Two Men Killed in Truck Accident



PLACERVILLE, Calif., April 18—Two men were killed and three injured when a large truck and trailer carrying 30 head of cattle crashed into the rear of a Pacific Gas and Electric company service truck 34 miles east of Placerville, Calif., April 15. Five steers were also killed and others ran away from the scene and had to be rounded up. (AP Wirephoto to The Statesman).

Allied Airmen Shatter Berlin Airlift Record

By Thomas A. Reedy
BERLIN, April 18—(P)—Allied fliers shattered all Berlin airlift records Saturday and said they proved combat divisions could be supplied by air alone.

U. S. and British airmen set out to learn just how many planes could be landed here in a 24-hour period by instrument flying.

The result was:
1,398 flights from western bases to Tempelhof, Gatow and Tegel fields in blockaded western Berlin.

12,940.9 tons of food, coal and machinery—equal to 22 trains of 50 freight cars each.

Air force officers disclosed the purpose of the giant effort after the last plane in the one-day span landed at Tempelhof, the U. S. base.

The radar system was pushed to the "absolute saturation point," a high officer said, adding:
"There were no mishaps. It was a perfect performance."

The airlift commanders chose a perfect weather period for the venture. The skies were cloudless from Berlin to the Rhine.

It was a huge Easter present for western Berlin. The previous daily record was 8,246.1 tons, set April 11.

Before the Russians imposed their blockade last June, about 9,000 tons of supplies moved to Berlin daily by rail from western Germany. Considerably more, however, reached the city by road and water lanes, especially from the east.

All previous airlift performances, such as the China-India flights, were put in the shade by this job. Airmen said it proved planes alone could easily supply divisions on the ground—a job largely handled in the past by trains and fleets of trucks.

Air intelligence is analyzing the entire setup for the military fliers. The four-engine C-54's landed at three-minute intervals on all three fields. The radio towers crackled constantly. Maintenance men kept an average of 200 planes in flight. This was 95 per cent of those available for cargo hauling.

Niagara Falls has become the leading electro-chemical and electro-metallurgical manufacturing center of the nation.

Roberts — Students at Roberts school enjoyed an Easter Egg hunt on Friday morning, each pupil bringing two colored eggs for the hunt. Mrs. John Zumstein and Mrs. Henry Staggs, teachers, surprised the children with candy eggs placed in baskets made during school.

CRANE
Plumbing & Heating
FOR EVERY NEED

See us today about modern Crane plumbing fixtures — a new Crane heating system.

Judson's
PLUMBING-HEATING
370 N. COMMERCIAL PHONE 3-648
EXPERT WORKMANSHIP

FARMERS FAILURE

— To Carry —
FARM LIABILITY

— MAY PROVE —
EXPENSIVE AND EMBARRASSING

It covers all your farm liability operations, including cars, trucks, tractors, combines, hay balers, livestock, home and personal acts, and fires out of control.

Reasonable Rates

Scellars, Foley & Rising, Inc.
Insurance Counselors
143 S. Liberty St. Phone 2-4143

Spring Valley Club Receives 4-H Award

SPRING VALLEY—Bob Ohling, Polk county 4-H extension agent presented a certificate and \$20 to Spring Valley, for being the outstanding health club in the county for the year, at the community club Friday night. Mrs. R. V. Carlson is club leader.

S. B. Dodge, vice president, presided at the meeting in the absence of the president, Mrs. Harvey McLaughlin. Mr. and Mrs. Frank B. Windsor, Mr. and Mrs. Earl Johnson and Mr. and Mrs. A. L. Dick the committee arranged for moving pictures.

Plans were completed for a homecoming at the local school house at the last day of school in June. The committee on arrangements includes Mr. and Mrs. George Hammond, Mr. and Mrs. Roy Carr and Mr. and Mrs. Ben McKinney.

Oregon in 1889. He operated stores at Bolton, Oregon City and Beaver Creek for six years before moving to a farm near Monitor. He was married on Feb. 6, 1905, to Clara Ida Schneider, who survives.

Surviving besides the widow and son are two daughters, Mrs. Gertrude Paist, Weech, Calif., and Mrs. Frieda Martin, Medford.

Funeral services are tentatively set for Wednesday in the Eberhart Funeral parlor at Canby.

Roberts Mothers' Club Has Meeting

ROBERTS — Mothers Club of Roberts school met Friday afternoon for a business and social meeting. It was reported that \$126.06 was made on the recent pie social for school benefit fund.

Six girls of the second class 4-H sewing, in charge of Mrs. E. L. Crowley, modeled cotton dresses and aprons. Mrs. Paul Marsh played piano selections during the modeling. An exhibit of needlework by 1st class 4-H sewing was on display, and Robin Roach also presented two piano solos. The 4-H cooking club served cake and coffee assisted by Mrs. Keith Austin, leader of cooking club.

The last meeting of the school year will be on May 13th, 3:00 p.m. at school house.

Death Takes A.P. Schneider, Valley Farmer

ELLIOTT PRAIRIE, April 18—Alfred Paul Schneider, 76, well-known Willamette valley resident, died today at the home of his son, Ernest, in this community. He had been ill for several months. Schneider was born in Minden, Neb., Aug. 10, 1871, and came to

Jefferson — The newly-organized Friendly Garden club met Monday night in the city hall. Alfred Powell is president. Speakers were the Lyle Gilmore, operators of Gilmore Gardens at Albany. Hostesses were Mrs. George Mills and Mrs. W. D. Barnes.



Just the
TICKET

for
a carefree vacation!

Whether to the large centers—Chicago... New York... Washington—to the old home or anywhere East—Go Union Pacific. Convenient schedules... luxurious pullman accommodations or sleep-easy coach seats... delicious meals... friendly service—they're yours when you choose Union Pacific!

DAILY SERVICE EAST

Streamliner
"City of Portland" "Portland Rose" "Ichoon"
Lv. Portland 5:30 p.m. 10:00 p.m. 8:30 a.m.
At Schedules Standard Time

For Complete Travel Information Consult
GENERAL PASSENGER DEPARTMENT
Room 751 Pittock Block Portland 5, Oregon

UNION PACIFIC
RAILROAD
Road of the Streamliners

Building Oregon

**FAMILY BY FAMILY
FARM BY FARM
BUSINESS BY BUSINESS**

LET'S BUILD
OREGON TOGETHER!

STATEMENT OF CONDITION... FIRST NATIONAL BANK OF PORTLAND

APRIL 11, 1949

RESOURCES		
Cash in vault and in Federal Reserve Bank	\$ 85,729,364.23	
Due from Banks	31,758,787.85	
Total Cash		\$117,488,152.08
United States Government Obligations, Direct and Fully Guaranteed	180,437,462.86	
State, County and Municipal Bonds and Warrants	24,633,944.62	
Other Bonds and Securities	1,326,331.06	
Stock in Federal Reserve Bank	450,000.00	
Loans and Discounts	162,580,882.63	
Accrued Interest Receivable	1,071,088.06	
Bank Premises, Furniture and Fixtures and Safe Deposit Vaults	4,779,829.97	
Other Real Estate owned	1.00	
Customers' Liability on Accounts of Letters of Credit, Acceptances, and Endorsed Bills	4,323,221.53	
Other Resources	274,831.89	
TOTAL RESOURCES		\$507,365,745.70
LIABILITIES		
Capital	\$ 4,500,000.00	
Surplus	10,500,000.00	
Undivided Profits and Reserves	15,843,604.72	
Total Capital Funds		30,843,604.72
DEPOSITS { Demand	\$26,727,048.09	469,082,363.99
{ Savings and Time	142,355,315.90	
Liability for Letters of Credit and as Acceptor Endorser or Maker of Acceptances and Foreign Bills	4,323,221.53	
Interest Received in Advance	1,497,874.72	
Reserve for Interest, Taxes, Etc.	1,492,371.59	
Other Liabilities	126,609.15	
TOTAL LIABILITIES		\$507,365,745.70
In addition to its 45 branches throughout Oregon, 15 other Oregon banks are members of the First National Bank Group		
DEPOSITS		
The First National Bank of Portland and 45 Branches	\$469,082,363.99	
15 other Oregon banks in the First National Group	97,538,551.47	
	\$566,620,915.46	
LOANS AND DISCOUNTS		
The First National Bank of Portland and 45 Branches	\$162,580,882.63	
15 other Oregon banks in the First National Group	23,902,010.06	
	\$186,482,892.69	
TOTAL RESOURCES		
The First National Bank of Portland and 45 Branches	\$507,365,745.70	
15 other Oregon banks in the First National Group	103,493,776.30	
TOTAL RESOURCES OF THE 61 BANKING OFFICES IN THE FIRST NATIONAL GROUP		\$610,859,522.00

THESE ARE THE 61 BANKING OFFICES IN THE FIRST NATIONAL GROUP

- PORTLAND BRANCHES**
- PORTLAND MAIN BRANCH
 - 39th and Stark
 - SIXTH AND MORRISON BRANCH
 - UPTOWN BRANCH
 - 605 S.W. 14th Ave.
 - EAST PORTLAND BRANCH
 - 612 E. Morrison St.
 - HAWTHORNE BOULEVARD BRANCH
 - E. E. 39th and Hawthorne
 - LIVESTOCK-KENTON BRANCH
 - 8334 N. Denver
 - MONTAVILLA BRANCH
 - 8005 E. Stark St.
 - ROSE CITY BRANCH
 - 4200 N.E. Sandy Blvd.
 - SOUTHEAST PORTLAND BRANCH
 - 2444 E. E. 2nd Ave.
 - UNION AND RUSSELL BRANCH
- BRANCHES OUT OF PORTLAND**
- ALBANY BRANCH
 - ASHLAND BRANCH
 - ASTORIA BRANCH
 - BEND BRANCH
 - CENTRAL POINT BRANCH
 - CONDON BRANCH
 - COOS BAY BRANCH
 - COQUILLE BRANCH
 - ENTERPRISE BRANCH
 - FOSSIL BRANCH
 - GRANTS PASS BRANCH
 - GREENBANK BRANCH
 - HEPPNER BRANCH
 - HILLSBORO BRANCH
 - HOOD RIVER BRANCH
 - KLAMATH FALLS BRANCH
 - SOUTH SIXTH STREET BRANCH
 - LA GRANDE BRANCH
 - LAKEVIEW BRANCH
 - MEDFORD BRANCH
 - MERRILL BRANCH
 - MOLALLA BRANCH
 - NEWBERG BRANCH
 - NORTH BEND BRANCH
 - MYSEA BRANCH
 - OAKRIDGE BRANCH
 - OREGON CITY BRANCH
 - PEMBERTON BRANCH
 - SALMON BRANCH
 - SHERMAN COUNTY BRANCH
 - STAYTON BRANCH
 - THE BALLES BRANCH
 - TILLAMOOK BRANCH
 - UNION BRANCH
 - WOODBURN BRANCH

- OTHER BANKS IN THE FIRST NATIONAL GROUP**
- CARLTON STATE AND SAVINGS BANK
 - BENTON COUNTY STATE BANK (Corvallis)
 - PHILOMATH BRANCH (Philomath)
 - THE FIRST NATIONAL BANK OF GOTTAGE GROVE
 - THE FIRST NATIONAL BANK OF EUGENE
 - THE FIRST NATIONAL BANK OF FOSTER GROVE
 - THE FIRST NATIONAL BANK OF LEBANON
 - STATE BANK OF MALHEUR COUNTY
 - MONROE STATE BANK
 - MORELAND-SELLWOOD BANK (Portland)
 - THE FIRST NATIONAL BANK OF PRINEVILLE
 - SCIO STATE BANK
 - CLATSOP COUNTY BANK (Seaside)
 - COOLIDGE AND MCCLAIN BANK (Silverton)
 - BANK OF SWEET HOME
 - YAMHILL STATE BANK

FIRST NATIONAL BANK OF PORTLAND

MEMBER FEDERAL DEPOSIT INSURANCE CORPORATION