

Public Records

CIRCUIT COURT
Nancy Benton Nottingham vs. Charles Wesley Nottingham: Order of default of defendant.
Marie L. Barkus vs. Elmer H. Barkus: Complaint for divorce alleging cruel and inhuman treatment asks custody for plaintiff of minor child, \$100 monthly support money, sole ownership of house furnishings. Married Oct. 10, 1940, at Longview, Wash. Plaintiff asks for \$100 monthly support money for child pending settlement.
A. D. Scott vs. Ray Learned and others: Complaint seeks clearing of title to real property.
Stephen J. Fouchek and Harry L. McBurnett vs. Duane J. Janick: Notice of appeal to state supreme court from decree of Dec. 10, 1948, filed by plaintiffs.
Odessa T. Horton vs. Arthur T. Horton: Decree of divorce grants plaintiff custody of three minor children, orders defendant to pay \$30 monthly for support of two younger children, awards plaintiff possession of household furniture, a house trailer and certain other real and personal property.
John Jacobson, doing business as Scotts Mills Lumber Co., vs. R. C. Bever: Complaint asks judgment of

\$2,406.72 in payment for lumber allegedly delivered to defendant.
Lillian L. Fowler vs. Jack T. Fowler: Order of default of defendant.
State vs. James C. Little, Jr.: Defendant pleaded guilty to three grand jury indictments charging obtaining of money under false pretenses—sentencing continued to February 11.
DISTRICT COURT
Theodore W. Minden, Sublimity, charged with driving while intoxicated, found innocent by jury.
Kenneth H. Agan, Saginaw, charged with larceny by bailee,

continued to February 7 for plea held in lieu of \$2,500 bail.
Benjamin F. Lane, 538 E. st., charged with non-support, continued to February 4 for plea, held in lieu of \$500 bail.
PROBATE COURT
Jerry McCarthy estate: Appraisal of estate at \$42,659.
Theodore Roth estate: Order grants widow allowance of \$3,500 for one year subsequent to filing of inventory.
Emma J. Worden estate: Order appointing Arthur Rich as administrator with the will annexed and

Norris Ames, Elmer Johnson and Lloyd Fry as appraisers.
Alfred O. Loe estate: Final decree closes estate.
Ole O. Dahl estate: Final decree closes estate.
Otto F. Johnson estate: Answers to petition for order for sale of remaining real property filed by Marjorie Ann Johnson and by John H. Johnson, guardian of Elizabeth Jane Johnson, joining in petition.
Mae Ledgerwood estate: Appraised at \$6,543.52.
Charles H. McCullah estate: Order appointing Wilma B. McCullah as administratrix.
Jacob Schindler estate: Order ad-

mitting will to probate and appointing Ernest Schindler as executor and Carl Heyden, Joseph B. Graettinger and Jesse Johns as appraisers.
MARRIAGE LICENSE APPLICATIONS
George B. Rucker, 33, laborer, and Minnie B. Dickens, 58, both of Portland.
John N. Kintz, 19, clerk, and Blossom Wolf, 18, domestic, both of Sublimity.
MUNICIPAL COURT
George H. Smith, 3890 N. River rd., charged with driving while intoxicated, reduced to reckless driv-

History of Dishes Is Central Howell Topic
CENTRAL HOWELL — Mrs. C. L. Simmons entertained the Central Howell Home Extension unit Tuesday. Assisting were Mrs. Leonard Roth, Mrs. Clarence Johnson, Mrs. Frank Way, Mrs. A. E. Kuenzi.
Visitors present were Mrs. Ralph Plane, Mrs. Earl Schar and Mrs. Alphas Schar.
Eleanor Trindle directed the study project, "Care and Selection of China," and presented the early history of dishes.
March meeting will be with

The Statesman, Salem, Oregon, Friday, February 4, 1949—15
Harley Stillion, Mrs. John Van Laanen, Mrs. Robert Bye, Mrs. Harold Anglin, Mrs. Harry Phillips, Mrs. Ray McKibbin, Mrs. Milton Kephart, Mrs. Lee Dow, Mrs. Emory Goode, Mrs. Clarence Johnson, Mrs. Frank Way, Mrs. A. E. Kuenzi.
Mrs. Clyde DeSart when Mrs. Lewis Patterson will auction off various items, proceeds of the sale to be for the Azalea house fund.
MOSCOW—(AP)—The Soviet Union has 1,250,000 school teachers, says "Pravda," which urges all local authorities to see that the laws on universal education be vigorously enforced. The paper adds that the 1,250,000 teachers had in their classes 32,000,000 pupils in 198,000 schools.

If you really want to reduce your Living Costs...

YOU CAN SAVE from 7¢ to 10¢ a lb. on Best Quality Coffees!



Here's how! Simply buy your coffees in inexpensive paper bags—and SAVE THE DIFFERENCE!

Maybe you are already cutting corners this smart, thrifty way, and know full well how "bag" coffee does save you money. But if you aren't, perhaps you wonder... is bag coffee GOOD coffee? A-B-S-O-L-U-T-E-L-Y! Bag coffee users have learned that coffee packed in an inexpensive bag can be just as full-bodied, just as flavor-rich and fine in quality as coffee packed in any other container. In fact, many say it's fresher, because bag coffee usually comes in the whole bean; is ground fresh when you buy

Yes, "bag" coffee will help cut living costs. If you are not using it, why not start today! Our NOB HILL brand is our finest blend and you'll find it extra-rich and strength-full. Our AIRWAY brand is milder, more mellow... and equally popular. Both brands are guaranteed to please you, or money back.

SAFEWAY

Ground Fresh When You Buy It!

NOB HILL COFFEE
Rich, full bodied, vigorous blend, with that s-m-o-o-t-h flavor.
1-lb. bag 48¢ 2-lb. bag 95¢

AIRWAY COFFEE
Mild and mellow. Good quality at an exceptionally low price.
1-lb. bag 46¢ 2-lb. bag \$1.37

OR If you Prefer "CAN" Coffees—SAFEWAY WILL SAVE YOU MONEY on them, too!

Yes, either way. Safeway prices will save you money on your favorite brand. In bag coffee, however, you save more, and we feel it is our duty to bring this extra saving to your attention. These Prices Effective All Safeway Stores — Salem — Dallas — Silverton

Edwards Coffee 1-Lb. Can 53¢
Other favorite can coffees Lb. 55¢

Needlecraft



876

Laura Wheeler

Art lovers! Dog lovers! Be sure to embroider this picture! You'll find it such easy needlework, such a pleasure to look at.
Two gorgeous collies in embroidered frame. Just line it! Pattern 876; transfer 15 1/2 x 19 inches.
Laura Wheeler's improved pattern makes needlework so simple with its charts, photos and concise directions.
Save TWENTY CENTS in costs for this pattern to the Oregon Statesman, Laura Wheeler, 1st and Stevens Sts., San Francisco, Calif. Print plainly PATTERN NUMBER, your NAME, ADDRESS with ZONE.
Find a fascinating hobby in our Laura Wheeler Needlecraft Catalog. Send fifteen cents for 108 illustrations of newest designs that beginners find easy experts prefer... crochets, knitting embroidery, toys, dolls, household and personal accessories. Free scrap quilt pattern printed in book.

Today's Pattern



4546
SIZES
12-20
30-42

You'll love this casual with its big dartsing cull, its wide-revered collar! Curved seams are cleverly designed to make your curves seem even more beautiful!
Pattern 4546 in sizes 12, 14, 16, 18, 20, 22, 24, 26, 28, 30, 32, 34, 36, 38, 40, 42. Size 16 takes 3 1/2 yds. 39-in.
This pattern, easy to use, simple to sew, is tested for fit. Has complete illustrated instructions.

Just get Our latest Pattern Book for Spring by Anne Adams! Do you know the best lines for YOU—your particular size and figure? Find the answers here—a fashion guide for every age, for tall and short, slim and not-so-slim and there's a FREE pattern of four styles printed right in the book. Send fifteen cents more for your copy today!

Send TWENTY-FIVE cents in extra for this pattern to The Oregon Statesman, Anne Adams, Pattern Dept., 139 N. Clinton St., Chicago 80, Ill. Print plainly NAME, ADDRESS, ZONE, SIZE and STYLE NUMBER.

Grocery Features Effective Friday Through Monday

GROCERY SECTION VALUES!

- SOUP MIX** Betty Crocker 3 pkts. 35¢
Your choice of delicious Pea or Noodle
- SWIFT'S PREM** 12-oz. can 39¢
Flavorful, savory—A good hunch for lunch
- PRESERVES** Strawberry! Lb. 29¢
Oregon grown—Oregon made. Shady Oak brand
- APRICOTS** Valley Gold 2 ³⁰³/_{cans} 35¢
Luscious golden fruit. Whole—peeled
- SHORTENING** Fluffo 3-Lb. 79¢
Pure Vegetable shortening—What a buy!

Need Filter Papers or Filter Cloths?
Your Choice—Pkt. 10c

Soup's On!

This special value is a favorite in a money-saving "BUY"

RANCHO Vegetable SOUP
Big 22-oz. can (Serves 6) 15¢

- Chatham Cheese** Mild, Cheddar Lb. 49¢
- Margarine** Sunnybank 1-lb. carton 34¢
- Pure Lard** Swift's Silverleaf 4-lb. pkg. 79¢
- Minced Clams** F.A.B. brand can 29¢
- Fancy Tuna** White Star No. 1/2 tin 45¢
- Salt** Snow White, Plain or Iodized Pkg. 9¢
- Pancake Flour** Suzanna 2 1/2-lb. pkg. 30¢
- FLOUR, DRIFTED SNOW**
50-lb. bag \$3.89 25-lb. bag \$1.98 10-lb. bag 85¢
- Peanut Brittle** Blu-Hill 3/4-lb. pkg. 35¢
- Cocoa** Our Mother's 2-lb. can 39¢
- Puddings** Jiffy Lou—3 Kinds Pkg. 7¢
- Cheese** Kraft's Velveta 2-lb. pkg. 79¢
- Bread** Mrs. Wright's White n' Wheat 1 1/2-lb. loaf 19¢
- Paper Towels** Indian Springs Roll 15¢
- Toilet Tissue** Westminster Roll 10¢
- VEL** Mar-VEL-ous for dishwashing 15-oz. pkg. 31¢

SAVE With SAFEWAY'S
Guaranteed Fresh PRODUCE!

POTATOES
10 lb. sack No. 1's 59¢
25 lb. sack No. 1's \$1.35
50 lb. sack No. 2's \$1.79



Fancy Navel
ORANGES
Medium-Sizes 5-Lb. Bag 45¢

- Golden Carrots** Lb. 8c
- Parsnips** Lb. 15c
- Pears** D'Anjou Extra fancy 2 lb. 25c
- Salad Mixture** 8-oz. pkg. 15c
- Fresh Dates** 8-oz. pkg. 19c
- Turnips** Lb. 10c

WINEAP APPLES
Perfect for cooking
5-lb. bag 59¢

CRISCO SHORTENING
Crisco—It's digestible
3-lb. can \$1.03

SPRY SHORTENING
For sure-fire cake success
3-lb. can \$1.03

BRADSHAW'S HONEY
Pure—Strained
2-lb. jar 49¢

MILK
Tall Cans All Brands 12c

In Our Markets!

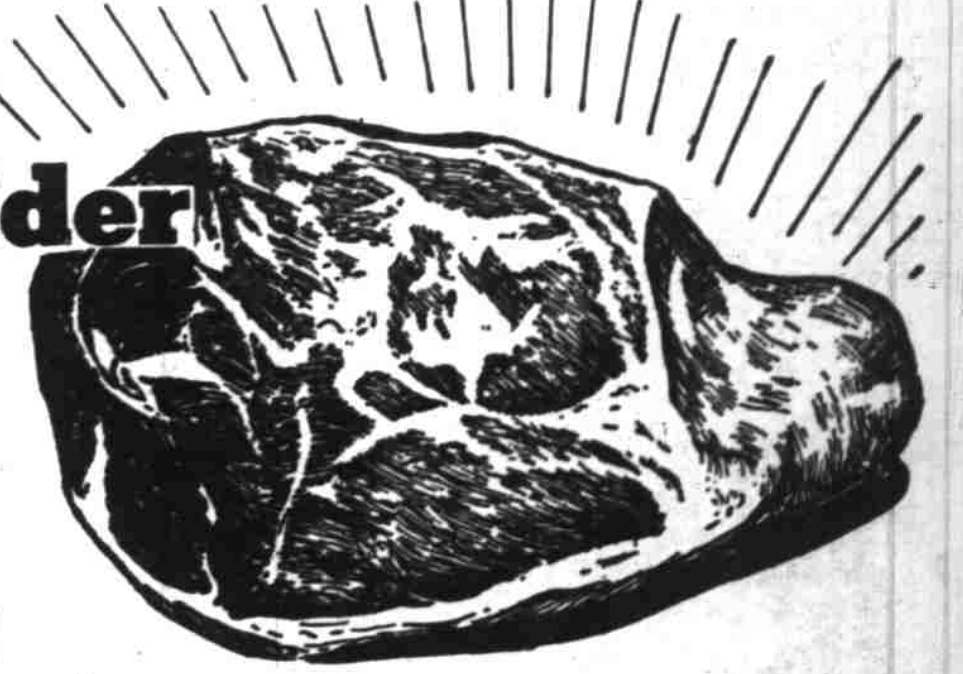
Pork Shoulder ROAST

PICNIC STYLE

This fresh, tender Roast will make you drool!

Per Lb. 39¢

- MORE PORK VALUES!**
- SLAB BACON** By the Piece Lb. 49¢
 - SMOKED HAMS** Half or whole Lb. 59¢
 - PORK LIVER** Nice and tender Lb. 29¢
 - PORK SAUSAGE** Country style Lb. 49¢



- PURE GROUND BEEF** Lb. 49¢
- BEEF CHUCK ROAST** Blade Lb. 49¢
- CORNED BEEF** A grand treat Lb. 45¢
- SKINLESS WIENERS** and Bologna Lb. 49¢

BEEF RUMP ROAST Per Lb. 59¢
OR **SWISS STEAK** 59¢

Another real good buy!

Pork Shoulder Steaks Lb. 45¢

SAFEWAY