

Studebaker Introduces 1949 Models in Salem



One of the new 1949 Studebaker models which go on display today at Bonesteel Sales and Service Co., 370 N. Church st., that pictured above is the Champion five-passenger Starlight coupe. Engine performance has been stepped up with new carburetor and changes in valve lift and manifold.

Studebaker's 1949 Line on Display Today

Studebaker's 1949 passenger car models go on display today at Bonesteel Sales and Service Co., 370 N. Church st.

Russell Bonesteel said new features of the models include increased luggage space in the trunk, redesigned wrap around bumpers and parking brake with a push-button release.

He added that improvements in the new Studebakers are highlighted by interior finishing of the '49 cars. In various models, he said, seat backs and cushions are in different but harmonizing patterns; upholstery and sidewalls are in two-tone contrast; nylon fabric is continued in some models with new colorful patterns and alligator leatherette is used in some models.

Bodie to Head WU Law Students

Willamette university law students this week elected James Bodie, Clinton, S. C., junior, to succeed John Horton, Baker, as law school student body president next semester.

Others elected to office were Walter Foster, Clackamas, vice president; William Pilling, Salem, secretary-treasurer and William Croghan, Salem, representative to the university student council. They replaced Howard Kaffan, John Copenhaver and William Stortz all of Salem in those posts respectively.

Sublimity School Obtains New Site

SUBLIMITY—A four-acre site for construction of a new public grade school building here has been purchased by district 7C from the Mary Bell property, northeast of the parochial high school.

Some old buildings on the property are being razed to make way for the proposed \$50,000 structure, whose three rooms will relieve present overcrowding. Freeman and Hayslip of Portland are the architects.

Middle Grove Scouts Sell 15 Tons of Paper

MIDDLE GROVE—Fifteen tons of scrap paper collected by Middle Grove Boy Scouts over a period of several months has been sold for \$85, half of the amount for which the last lot sold brought per ton.

Providing trucks for the hauling were Paul Lardon, Cleo Keppinger, John Van Lannen and Jack Wikoff. Helping with the loading were Robert Pickrel, Robert Wagers, Hubert Aspinwall, William Klee, Ted Kuenzi and Lewis Patterson. A covered dish dinner was served at the Keppinger home by Mrs. Pickrel, Mrs. Wagers, Mrs. Wikoff, Mrs. Patterson, Mrs. Kuenzi and Mrs. Keppinger.

NEWSPAPER IN PRINEVILLE

PRINEVILLE, Jan. 20 (AP)—The Prineville News, a new semi-weekly newspaper, will begin publishing here February 1, owner Lee Taylor said today.

Public Records

PROBATE COURT

Charlie Ederidge guardianship; Subject ordered to appear in court on January 28 to show cause why a guardian should not be appointed for him.

Harry Benedict and Maxine Ann Louise Schwab guardianships; Order appointing Mary Jeanne Zedrow as guardian.

Mary Jeanne, Harry Benedict and Maxine Ann Louise Schwab guardianships; Order releasing Amanda Schwab Wilde as guardian.

R. J. Janz estate; Appraisal of estate at \$56,499.93.

John W. Fahey guardianship; Order sets hearing on petition to appoint Gladys Stoutenberg as guardian for January 31.

CIRCUIT COURT

Wayne H. Weeks and A. W. Beardsley vs. Clarence Anderson; Case dismissed upon plaintiff's motion, with prejudice and without costs to any party.

C. C. Parton vs. T. G. Patzer; Defendant's answer to complaint corrects name to T. J. Patzer and denies allegations.

Lillian F. McGary vs. Kenneth R. McGary; Complaint for divorce alleges that defendant has been convicted of a felony and is serving a sentence in the state penitentiary, and asks custody of four minor children, \$50 monthly support money and \$50 for children upon defendant's release from penitentiary. Married Oct. 13, 1938 in Hailey, Idaho.

Frances C. Looney vs. Lee Looney; Decree of divorce to plaintiff grants her possession of personal property and restores plain-

tiff's former name of Frances C. Olson.

Herbert Jones vs. Oren E. Roberts and James Ballard; Reply filed by plaintiff.

Elmer H. K. Door vs. Glen Stevens; Notice of withdrawal as attorney for plaintiff filed by W. W. McKinney.

Joseph M. Beyer vs. Peck Egg Service, Inc.; Complaint seeks judgment of \$2,500 for alleged injuries suffered by plaintiff and \$1,000 for alleged damage sustained by plaintiff's vehicle in auto accident Sept. 23, 1947, at intersection of Hubbard-St. Paul and Champoug-Johnston school roads.

LaVerne Matson vs. Vernon Matson; Complaint for divorce alleging cruel and inhuman treatment asks for restoration of maiden name of LaVerne Umehoffer. Married May 10, 1946, at Salem.

MUNICIPAL COURT
Laurest M. Olson, Eugene, charged with reckless driving, fined \$35.

Allen M. Kleinsmith, 460 S. 16th st., charged with illegal possession of liquor, placed on probation for six months.

Edwin T. Barrett, 333 Union st., charged with assault and battery, posted \$150 bail.

POLK CIRCUIT COURT
DALLAS, Jan. 20—Jewell Mason vs. Wallace Mason; Suit or divorce charging cruel and inhuman treatment, asks custody of minor

child. Married Sept. 6, 1947 at San Jose, Calif.

Credit Bureau Adjustment Department, Inc. vs. Pat Boss; Suit seeks to collect \$310 allegedly due on merchandise.

John M. Primus vs. R. L. Hamblen; Suit seeks to collect \$300 allegedly due on promissory note plus \$75 attorney fees.

Salem Steel and Supply company vs. Charles Lyons as Charles Lyons Lumber company; Suit seeks to collect \$1107 allegedly due on steel supplies.

Charley A. Kramer vs. Minor F. Oziah; Suit seeks to collect \$200 allegedly due on cash loan.

SILVERTON JUSTICE COURT
Mr. and Mrs. William Carlson, Silverton, were bound over to the county grand jury Wednesday on charges of larceny by bailee; released on own recognizance. Private prosecutor is Norris Ames, who filed original charges last August 16, involving disposition of a radio on a conditional sales contract.

MARRIAGE LICENSE APPLICATIONS
Johnnie J. McAllister, 25, county highway employe, Salem route 4, box 896, and Eredia Mae Miller, 19, Turner.

Jack Moye, 25, veterinarian, Klamath Falls, and Elizabeth Miller, 20, clerk-stenographer, Woodburn.

Joe E. Tierce, 23, woodworker, and Darlene Ratzloff, 19, both of Jefferson.

Willamette to Graduate 22 As Term Ends

Twenty-two Willamette university seniors, including six women, will graduate from the university at the end of the semester in February, it was announced by the registrar's office this week. The graduates will formally receive their degrees at the June exercises.

Women graduating are Beverly Briggs, Great Falls, Mont.; Addy Lane, Salem; Nancy Montgomery, Salem; Yvonne Simpson, Evansville, Ill.; Vivian Webber, Salem and Mrs. Vergie Wicks, Salem.

Men graduating are Ralph Bolt, Charles Creelins, Eric Fitzsimmons, Carl Hultenberg, John Nichols, David Nyberg, Eric Radcliffe, Alan Robertson, Daniel Ross, Stanley Ryals, John Watkins, Clarence Webber, Vernon Zornes, all of Salem, and William Edwards, Guy Jonas and Brice Smith of Portland.

According to one source, rheumatic diseases cost the American people about \$750,000,000 a year in lost wages, relief payment and doctor bills.

Montgomery Ward

155 N. Liberty

Telephone 3-3191

Week-End SHOPPER SPECIALS

Shop Wards Friday and Saturday For Extra Savings In Every Department

Shop 'Til 9 O'clock Friday Night!

MISSES & WOMEN'S DRESSES

Regular 8.98 to 15.98, your choice of all wool plaids or solid color rayon crepes, failles and gabardines. Wide selection of colors. Broken sizes 9 to 44. **4⁸⁸**

Fashions, Second Floor

Shop 'Til 9 O'clock Friday Night!

MISSES BLOUSES

Regular 2.98 and 3.98. Large selection of tailored and dressy style blouses in rayon crepe, gabardine and cotton prints. Short and long sleeves. Sizes 32 to 38. **1⁵⁰**

Fashions, Second Floor

Shop 'Til 9 O'clock Friday Night!

NYLON HOSE

Regular 1.19, sheer 45-gauge 30-denier nylon hosiery in season's newest shades. Wards "better" quality. Sizes 8½ to 10½. **94^c**

Hosiery, Main Floor

Shop 'Til 9 O'clock Friday Night!

MEN'S ALL WOOL SUITS

Regular 39.75, men's all wool worsted suits in single and double breasted models. Shorts, longs, regulars and stouts in sizes 35 to 46. Shop Wards and save! **31⁸⁸**

Men's Suits, Main Floor

Shop 'Til 9 O'clock Friday Night!

MEN'S ALL WOOL SHIRTS

Regular 6.98 men's colorful all wool buffalo plaid shirts in black and white, or red and black. Sizes 16, 17, 18. **4⁶⁶**

Men's Furnishings, Main Floor

Shop 'Til 9 O'clock Friday Night!

ELECTRIC IRON

Regular 9.95 Wards "Best" quality automatic iron has dial heat control, shiny chrome finish, light weight—only 4 lbs. **6⁶⁶**

Housewares, Basement

Shop Wards 'Til 9 P. M. Every Friday Night!

Montgomery Ward

Final Shoe Clearance!

You just can't afford to miss out on a wonderful opportunity like this! We're clearing all discontinued styles . . . broken sizes . . . odd lots . . . every pair drastically reduced to a tiny fraction of the original cost.

HURRY IN FOR BEST SELECTION

242 PAIRS IN THIS GROUP

WOMEN'S STYLE WING STEPS, Reg. 5.98
Good Quality! Hurry, for selection is limited.

WOMEN'S FALL CASUALS, Reg. to 4.50
Right for Spring! Broken sizes, odds and ends.

WOMEN'S SPORT OXFORDS, Reg. to 5.98
Varied styles, but just a few of a kind.

CHILDREN'S GREEN BANDS, Reg. 3.49
Good quality shoes in soft supple leathers.

WOMEN'S HOUSE SLIPPERS, Reg. to 3.98
Rayon satins, velvets, felts in varied styles.

WOMEN'S COMFORT PUMPS, Reg. 6.50
YOU may find your size in these odd lots.

CHILDREN'S SLIPPERS, Reg. to 2.98
Left over from Christmas! Capeskins, felts, etc.

\$1⁹⁷

377 PAIRS IN THIS GROUP

WOMEN'S FOR STREET DRESS, Reg. 6.50
Good looking styles for daytime, business wear.

WOMEN'S SPORT AND CASUALS, Reg. 5.98
Better hurry in now for your favorite styles.

CHILDREN'S RED BAND SHOES, Reg. 4.98
Mothers! These are Wards better quality shoes.

MEN'S CAMP-MOC, 2 EYELET, Reg. 4.98
Easy-going style for sport or knock-about.

MEN'S BROWN SUEDE OXFORD, Reg. 6.75
Springy crepe rubber soles. Not all sizes.

WOMEN'S HOUSE SLIPPERS, Reg. to 3.59
Close-out of some of the most popular styles.

MEN'S OPERA SLIPPERS, Reg. to 4.29
Brown kid leather in the style men favor.

CHILD'S BLACK HIGH TOP SHOES, Reg. 4.98
Sturdy shoes for school or play. All sizes.

MISSES' HEALTH OXFORD, Reg. 5.98
Comfortable arch support shoe in brown only.

MISSES' RED SANDAL, Reg. 4.98
Casual style in colorful red leather.

\$2⁹⁷

121 PAIRS IN THIS GROUP

CHILDREN'S WHITE HIGH TOP SHOES, Reg. 4.98
Sturdy built dress shoe. All sizes, 8½ to 12

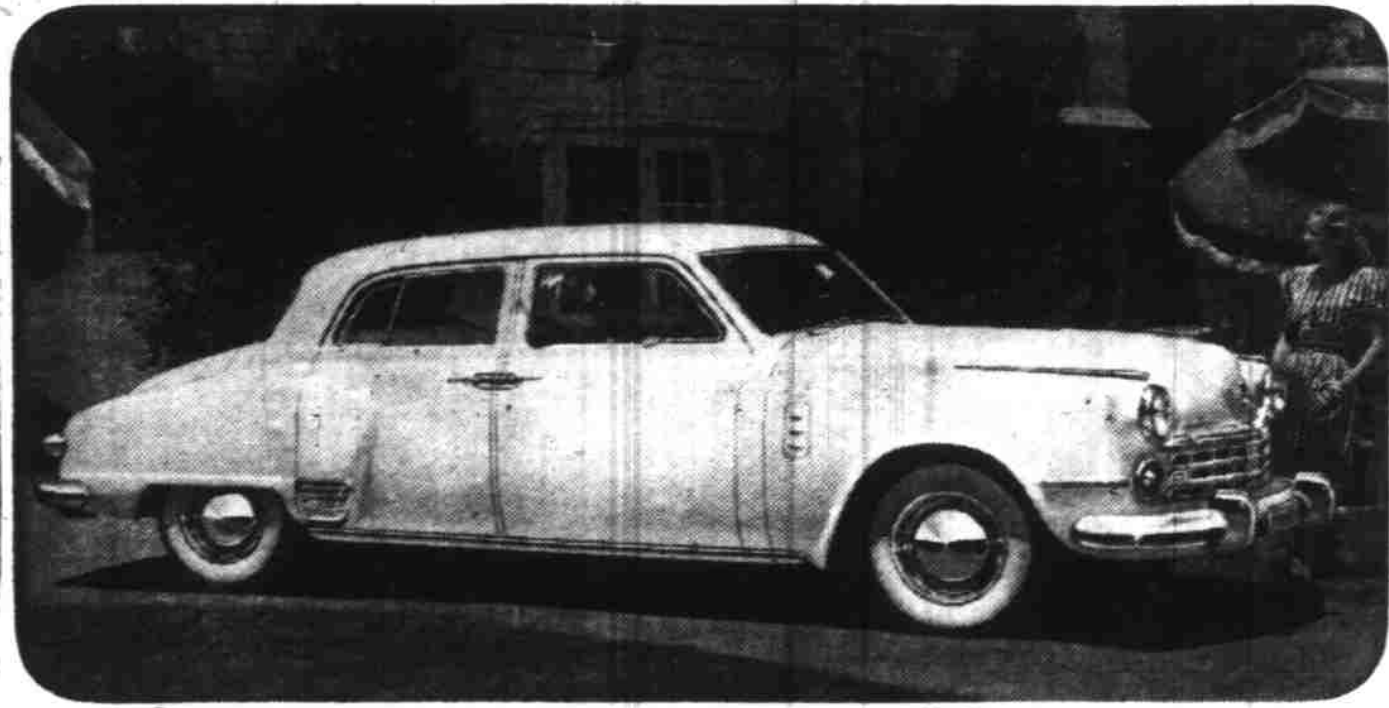
WOMEN'S CASUAL SHOES, Reg. 5.98
For women on their feet a lot. Broken lots.

CHILDREN'S BLUE BANDS, Reg. 5.98
Best quality, means longer wear on busy feet.

WOMEN'S SPORT SHOES, Reg. 5.98
Black suede in popular ballet slipper style.

WOMEN'S SLING BACK SPORT SHOE, Reg. 5.98
Bright red leather in sling back style.

\$3⁹⁷



Studebaker Land Cruiser for 6 passengers

New performance! New smartness! New money's worth!

ANNOUNCING NEW 1949 STUDEBAKERS

A new vogue in interiors by Studebaker stylists

THEY'RE here today in all their fight-streamed glory—the fabulously fine new Studebakers for 1949!

New visions of loveliness inside and outside! Spectacular new examples of Studebaker's postwar pacemaking! The most value-packed automobiles a moderate investment ever bought!

A new 1949 Studebaker Commander

with new power! A new 1949 Studebaker Champion with new glamor! A special extra-long-wheelbase new 1949 Studebaker Land Cruiser—style-marked with a new distinction!

Take a moment to take a look—and you'll want to take an hour to admire these newest Studebaker dream cars. It's a Studebaker year again all over America!

See these stand-out distinctions of the new 1949 Studebakers

New decorator-fabric upholstery • New instrument panels • New body colors • Self-adjusting brakes • Variable ratio "extra-leverage" steering • Panoramic vision • Seats centered between axles • Low center of gravity • "Black light" dash dials • Automatic hill holder and foam rubber seat cushions optional at added cost on Champions—standard on all other models • Automatic overdrive, Climatizer heating system, white sidewall tires and wheel trim rings are available on any model at extra cost.



Studebaker Champion Starlight Coupe for 5 passengers

Bonesteel Sales & Service Inc.

370 N. Church St., Salem, Oregon
M. J. BAUGHN, DETROIT, OREGON

Studebaker's the buy word for thrift that lasts and style that thrills