

Rubber Welders in New Building



This is the new home of O. K. Rubber Welders at 1820 S. 12th st. The business is owned and operated by James Sidwell, veteran rubber vulcanizer who operated at 202 S. High st. for 12 years before moving into the new building. Sidwell said the factory combines the latest vulcanizing and rubber welding equipment. (Photo by Don Dill, Statesman staff photographer.)

Chief Roble Issues Reminder Of Christmas Tree Fire Hazard

Christmas trees and decorations definitely are fire hazards and every care should be used with them. Fire Chief W. P. Roble of Salem stressed in a holiday warning this week. "Remember when you bring a tree into your home, it is going to dry up," the chief said. "A fresh cut tree will not take fire any more easily during the first day or two than would the evergreen shrubs growing outside, but it becomes a more serious fire hazard every hour. At the end of a week it will be highly inflammable. It is best to bring in a fresh tree as short a time before Christmas as possible, and to remove it as soon afterwards as you can.

"The tree can be kept fresh if you set it in a container of water. Cut off the base of the tree at an angle at least one inch above the original cut and keep it standing in water during the entire period that the tree is in the house, adding water to the container at intervals to keep the water level always above the cut."

Chief Roble added these admonitions:

Keep the tree outdoors until ready to install it.

Do not set the tree up until a few days before Christmas.

Place the tree in the coolest part of the house. If necessary, shut off the radiator closest to the tree.

Under no circumstance use any cotton or paper for decoration unless such decorations have been flameproofed. Flameproofed decorations can be purchased at many stores.

A simple formula for "flameproofing" is made up of 9 ounces of borax and 4 ounces of boric acid to one gallon of water. The article to be treated should be well saturated with the solution, drained and let to dry. Application may be by dipping, brushing or spraying. Such formula is not

intended for use on Christmas trees. Fireproofing of pyroxylin is not possible.

Do not place electric trains around the tree.

Use only electric lights and check all strings for their safe condition.

Do not leave the tree lights burning when no one is in the house.

If needles turn brown near the lights, change the location of the lights.

Take the tree down when needles start falling.

If any decorations are used about the house, do not permit them to be around or near chairs and other places where people may smoke.

If lights are desired in windows, never use candles; keep curtains and other inflammable material pulled back at least six inches from any light.

The tree should be well secured against falling and so placed that, standing or fallen, it cannot block a doorway which might be needed to escape from the room.

Open flame lighting is entirely out of place and should be discouraged.

Christmas wrappings burn like tinder and should be safely removed as soon as possible.

If your tree catches fire, call the fire department immediately.

Farmers to Earn Less This Year than in 1947

PORTLAND, Dec. 11—(P)—The nation's farmers will probably wind up the year with less net income than they earned in 1947, the U. S. department of agriculture said today.

The USDA bureau of agricultural economics said livestock and crops have declined somewhat in price, while farmers' costs remained relatively stable.



BOYS! GIRLS!

This year Santa Claus will write to YOU! He'll answer your letter if you bring it to the special Santa Claus Letterbox at this store. Be sure to put the 10¢ Santa Claus Stamp on it, and you'll get a letter straight from Santa Claus Land!

Give Santa time to answer before Christmas! Get the Santa Claus Stamp here and place your letter in our special Letterbox now!

Miller's

College Paper Stresses Need For Caution

Relating a careful driving plea to the Christmas season, the Willamette Collegian this weekend published a special Traffic Safety edition to underscore the need for traffic caution before students head for home over the holidays.

Eric Bergman, editor of the student newspaper, said the edition

would be entered in competition with other college papers in a contest sponsored by the National Safety Council and Lumbermen's Mutual Casualty Co.

And the student editor initiated a contest of his own, announcing that Collegian staffers will observe student driving habits in the coming week and select the most courteous driver around campus -- in time for next week's edition.

An editorial by Bergman, a cartoon, three feature stories and five pictures (three of them showing badly wrecked cars in Salem) are featured in the issue.

Neuner Rules On Payment of School Fund

The last half of the state and county school fund may be distributed to the respective counties of the state anytime between October 15 and April 15, Attorney General George Neuner ruled Friday.

The opinion was requested by Secretary of State Earl T. Newby.

The Statesman, Salem, Oregon, Sunday, December 12, 1948--7

based on a letter from Roy E. Cannon, Multnomah county school superintendent, in connection with liquidation of the Vanport school district. Under the law the first half distribution must be made on or before October 15.

Neuner further held that the entire last half payment must be made at one time. Cannon, in his letter to the attorney general, said he was in doubt as to whether the second half payment could be made until April 15 which would delay the Vanport school district liquidation.

More than 50,000 men were listed as killed, wounded or missing after the three-day battle at Gettysburg during the Civil war.

Gigantic redwood trees, inhabitants of the northwest, reach

NOTICE. Juniper-myrtle wood and shell novelties; also plastic and beautiful agate jewelry. Our profits will not permit extensive advertising, so it's to your advantage to drive out to POP'S AGATE AND NOVELTY SHOP, 3994 Portland Road.

OPEN FRIDAY NIGHTS TO 9 P. M.

THE MAN'S SHOP

Clothes Make the Gift - and the Man

See for yourself how his eyes light up when he slips into that handsome, comfortable Kuppenheimer suit or topcoat. Watch what it does for his whole appearance, for his holiday mood, for his inner satisfaction. A practical gift, too.

SPORT SHIRTS

By Rogue

One of the nation's outstanding shirts - in design, tailoring and materials. "Soap N Water" fabrics make Rogue your most practical shirt gift. They're unconditionally washable.

8.50 to 17.50

THE MAN'S SHOP ABOUNDS WITH

Gift Suggestions

SURE TO PLEASE ANY MAN

- ★ Manhattan Dress Shirts \$ 3.95 to \$ 4.95
- ★ Interwoven Socks \$.35 to \$ 3.00
- ★ Rabhor Robes \$10.95 to \$25.00
- ★ Textron Pajamas \$ 3.95 to \$ 8.50
- ★ Slip-on Sweaters \$ 5.95 and more
- ★ Sweater Coats \$ 6.95 to \$10.95
- ★ Sport Coats \$19.50 to \$29.50
- ★ White Stag Jackets \$11.95 and more
- ★ Scully Suede Jackets \$45.00 to \$70.00
- ★ Slacks \$11.95 to \$20.00
- ★ Daniel Hayes Gloves \$ 5.00 to \$ 8.50
- ★ Buxton Billfolds (tax inc.) \$ 4.80 to \$ 9.00
- ★ Wool-Lined Slippers \$ 4.95 to \$ 7.95
- ★ Pioneer Belts & Braces \$ 1.50 to \$ 5.00
- ★ All Linen and Lawn Hankies \$.35 to \$ 1.00
- ★ Scarfs, wool or rayon \$ 1.95 to \$ 3.95
- ★ Slack Racks \$ 2.00

Gift Certificates for a

Dobbs Hat

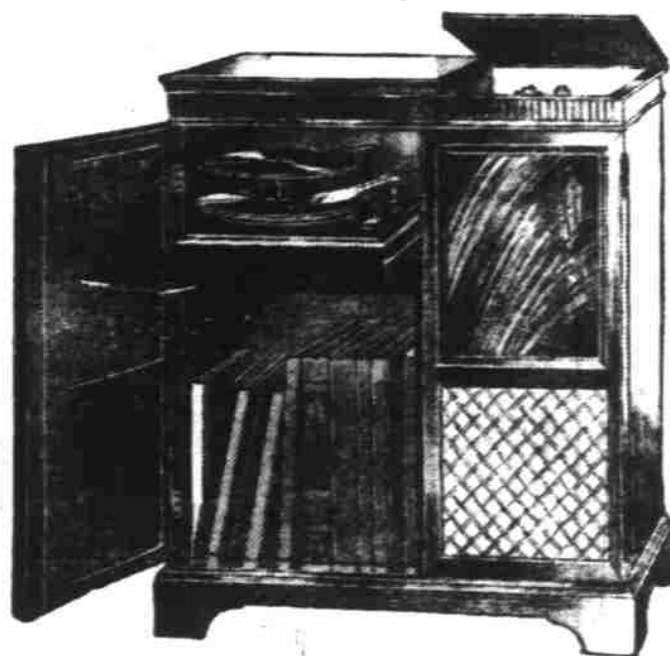
Nunn-Bush Shoes

The Man's Shop

"The Store of Style, Quality and Value"

MOXLEY & HUNTINGTON 416 STATE STREET

JUST ARRIVED in time for CHRISTMAS!



Tremendous Savings on new

Bendix Radios

Traditional charm in mahogany with listening luxury on standard broadcasts, short wave, FM and fully automatic phonograph. Automatic tuning, dual tone control, Concert Speaker, large record storage, 12 tubes.

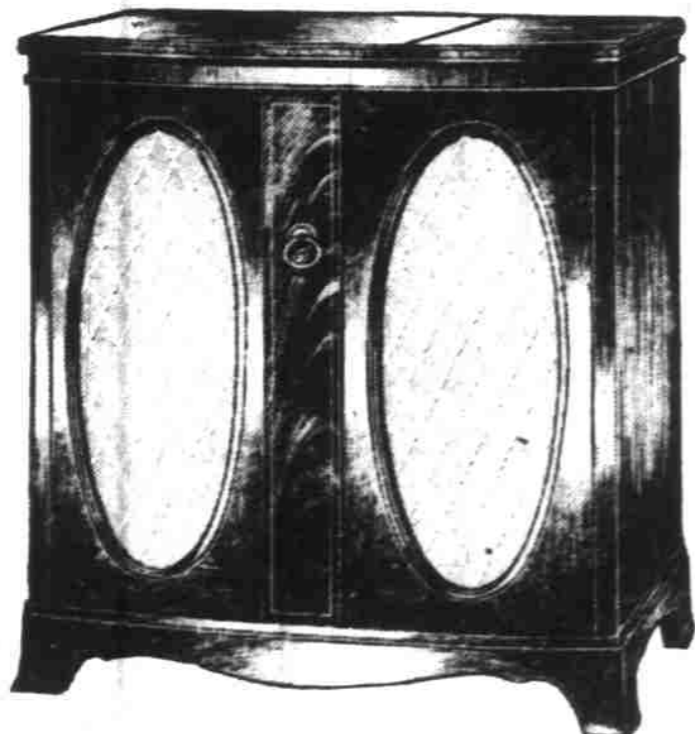
Was 399.50. **219⁹⁵**
NOW
You Save \$179.55!

OPEN FRIDAY NITES TILL 9 P.M.

Automatic phonograph, standard broadcasts, short wave and FM at their best in mahogany splendor. Hush-O-Matic gives you all the beauty from favorite records and none of the scratch. Large record storage. Automatic AM-FM push-button tuning. 12-inch Concert Speaker. 14 tubes.

Was 449.95 **249⁹⁵**
Now Only

You Save \$200.00!



Many Other Models To Choose From — As Low As \$119.95

Exclusively At

RALPH JOHNSON APPLIANCES

355 Center Street

Phone 3-3139