

Warrens Can Still Smile



SAN FRANCISCO, Nov. 4—Gov. Earl Warren, republican vice presidential candidate pours coffee for some smiling members of his family at breakfast in a San Francisco hotel. And the governor can still smile, too. Left to right: Dorothy, Nina, Warren, Mrs. Warren and Virginia. (AP Wirephoto to The Statesman.)

Apprenticeship Rule Expanded

The state apprenticeship council is authorized to approve a business establishment as an apprentice training institution for veterans under the federal servicemen's readjustment act, subject to certain restrictions, Attorney General George Neuner held Thursday.

Such approval, however, would of necessity be confined strictly to the federal statute and would not be an expression of the recognition of the program as an approved apprenticeship under the apprenticeship law of the state. The opinion was asked by W. E. Kimsey, state labor commissioner and chairman of the state apprenticeship council.

Water District Growth Sought

Marion county court has under advisement five petitions filed with it this week seeking additions to the Vista Heights water district.

The petitions were received from C. Hobart and Ethel M. Smith, Thomas and Jane LaDuke,

Hallett Placed On Probation

Vincent Hallett, 965 N. 5th st., who was bound over to the Marion county grand jury Wednesday on a charge of unlawful use of an automobile, was later sentenced on the same day to six months in the county jail and placed on probation by Circuit Judge George Duncan.

Jobless Pay Checks Low

Unemployment payments for October continued to establish new low marks for the post-war period, the state unemployment compensation commission reported Thursday.

Benefit payments to civilian workers last month aggregated \$408,274, a seasonal gain from September but more than 7 per cent below October, 1947. Readjustment allowances to veterans dropped to \$103,958, nearly 15 per cent under the previous month and the lowest since October, 1945.

Coos Bay, where several wood products plants are closed, paid \$49,941 in benefits and allowances against \$18,169 a year ago. Fish canneries' slowdown boosted Astoria's total to \$18,331. No payments were made to longshoremen and others directly involved in labor disputes.

Paeth Named WU Director Of Admissions

Dr. G. Herbert Smith, Willamette university president, Thursday announced the appointment of C. A. Paeth as director of admissions.

Paeth replaces Walter E. Erickson, who resigned August 30 to take the vice-principal post at Cleveland high school in Portland. Dr. Raymond A. Withey, dean of students, has been taking charge of admission duties since Erickson resigned.

Paeth is a graduate of Washington State college where he majored in psychology. He holds master of arts and science degrees. He has served as personnel psychologist for the Fred Meyer company since then. Paeth will arrive on the Willamette campus November 8.

Local Bakery To Alter Plant

Cherry City Baking co., 1195 Broadway st., received a permit from the city engineer's office Thursday to complete \$5,000 alterations at its plant. Partitioning of second floor space for offices and moving rest rooms are included in the construction.

A. L. Frankum was authorized to construct a house and garage at 1185 N. 24th st. Other permits issued Thursday went to M. K. Crother, 1517 Court st., house repair, \$500; Western Union, 437 State st., office repair, \$200; and Jary florists, 365 Court st., store repairs, \$200.

Some gears are as small as pinheads.

Dewey Meets Press



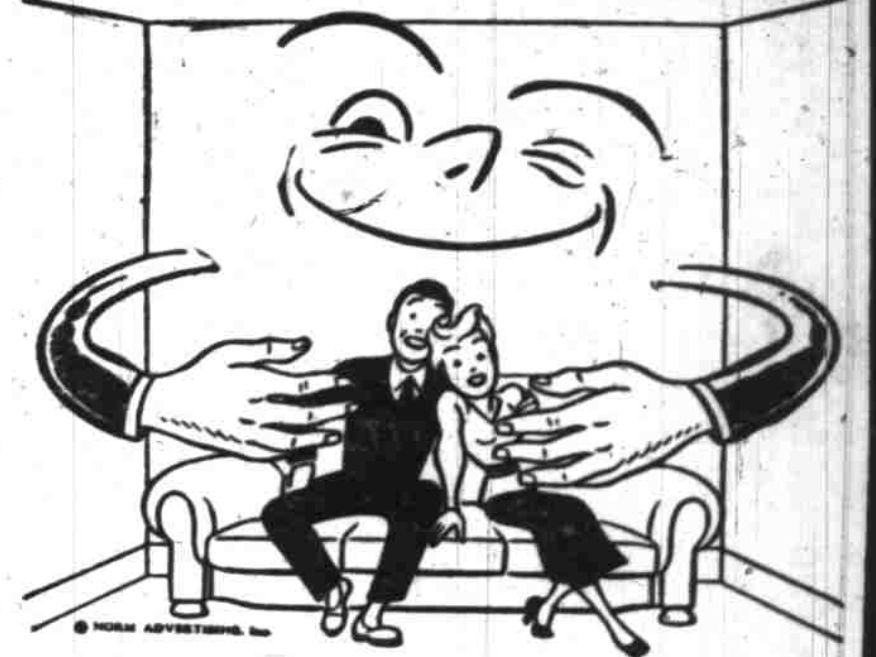
NEW YORK, Nov. 4—One hand in his coat pocket, a sober-faced Gov. Thomas E. Dewey gestures with his left hand as he speaks to reporters in New York, after conceding the election to president Truman. He said it is "pure fiction" that he is planning to resign as Governor. (AP WIREPHOTO to The Statesman.)

Courthouse Fund Reaches \$493,181

The Marion county courthouse construction fund has reached a cash total of \$493,181, according to the October monthly report

issued Thursday by E. J. Butler, county treasurer. Other funds reported included \$551,065 in the general road fund, \$308,479 in the general fund and \$115,686 in the county school fund.

Some gears used in industry are as large as 30 feet in diameter and four feet wide.



YOU'RE WRAPPED UP IN COMFORT

... when your home is insulated! Our top notch insulating materials keep your home warmer in winter, cooler in summer, comfort-tight the year round. The saving on fuel bills alone will more than pay the cost of insulation in a few years.

Convenient Monthly Payments Arranged

Fred W. Smith Lumber Yard

"WHERE THE HOME BEGINS"

State St. Four Corners Dial 3-8515

Hallett Placed On Probation

Vincent Hallett, 965 N. 5th st., who was bound over to the Marion county grand jury Wednesday on a charge of unlawful use of an automobile, was later sentenced on the same day to six months in the county jail and placed on probation by Circuit Judge George Duncan.

Hallett was originally charged with larceny of an auto following his arrest by city police on the night of October 26. This charge, however, was dropped and a new one of unlawful use of an auto was substituted in its place during preliminary hearing in Marion county district court Wednesday.

Although Hallett was bound over to the grand jury Wednesday morning in district court he appeared that same day before Judge Duncan, pleaded guilty and waived grand jury hearing. He was charged with unlawfully using the car of Harold D. Robinson, Salem route 9.

Yule Seal Sale Supplies Sent

Supplies for the annual tuberculosis Christmas seal sale, slated to begin November 20, are to go out today from the sponsoring office of the Marion County Tuberculosis and Health association to various community chairmen over the county.

Mrs. Ruby Bunnell, association executive secretary, also took supplies Thursday to Alice Smith at Mill City; Mrs. Elmer Klein, Aumsville; Mrs. Lloyd Girod, Idanha; Anne Erwert, Mt. Angel; Mrs. John Powell, Stayton; Mrs. Paul Smith, Jefferson; and Mrs. Edward Martin, Silverton.

Supplies, including posters, seals and envelopes, will be given today to Mrs. Edwin Miller, Aurora; Mrs. Ronald Jones, Brooks; Mrs. Robert Jones, Gervais; Mrs. Clarence Friend, Hubbard; Mrs. Carl Smith, St. Paul and Mrs. Carl Magnuson, Woodburn.

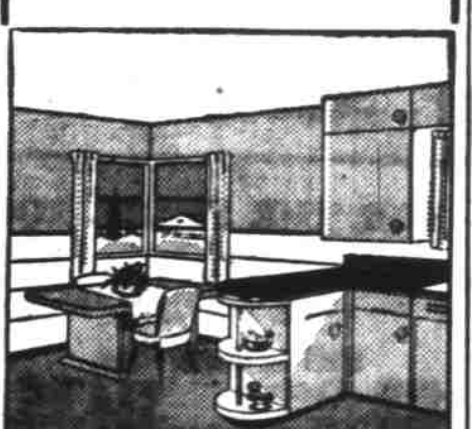
Lions Hear Fred Lathrop

About 125 investment companies in the United States now service some 1,000,000 investors and a total of \$2½ billions, it was reported to Salem Lions club in a luncheon talk Thursday by Fred A. Lathrop, an investment counselor for Conrad Bruce & Co.

Lathrop told the club meeting in Marion hotel that investors who suffer fewest disappointments are those who plan investments wisely to meet their particular requirements.

Your Kitchen and Bath Can Be Forever Lovely When You Install

COLOTYLE



Imagine — walls that clean as easily as a china dish. They're yours with this wonderful new plastic-coated wallboard. No more grease spots or wall scrubbing and no more repainting.

JUST GET COLOTYLE

Terms as Low as \$5.66 per Month Get a Free Estimate

R.L. Elstrom Co. 246 Court St. Ph. 2-2493

"I smoked CHESTERFIELDS between scenes while making my new picture, JOHNNY BELINDA, they're Milder..."

It's MY cigarette."

Jane Wyman

STARRING IN JOHNNY BELINDA A WARNER BROS. PICTURE



"I smoke Chesterfields because I know the kind of tobacco that's in them. It's good-smoking tobacco...mellow, ripe and MILD."

Russell C. Bay

TOBACCO FARMER, PARIS, KY. (FROM A SERIES OF STATEMENTS BY PROMINENT TOBACCO FARMERS.)



Always Buy CHESTERFIELD

MAKE YOURS THE Milder CIGARETTE... They Satisfy

SAVING CENTER STORES

SALEM W. SALEM
½ Mile North of the Underpass At the Foot of the Bridge

| | | |
|-------------|------------------------------|------------------|
| CANNED MILK | All Brands 2 cans | 27¢ |
| BUTTER | Grade A lb. | 66¢ |
| TUNA | White Star Can | 39¢ |
| MILK | Mayflower and Curly's 2 qts. | 39¢ Plus Deposit |

VEGETABLES

| | | |
|----------|----------|-----|
| SPUDS | 50 lbs. | 89¢ |
| ONIONS | 10 lbs. | 29¢ |
| TOMATOES | Carton 2 | 25¢ |
| CABBAGE | lb. | 3¢ |

MEAT DEPARTMENT

Make Saving Center Your Holiday Meal Buying Center

| | | |
|-------------------------|-----|-----|
| BEEF ROAST | lb. | 39¢ |
| SHORT RIBS | lb. | 29¢ |
| GRADE 'A' T-BONE STEAKS | lb. | 57¢ |
| EVISCERATED TURKEYS | lb. | 55¢ |
| FRYERS | lb. | 69¢ |

Both Stores Open 8 a.m. to 9 p.m. Including Sundays

Two Money Saving Markets SAVING CENTER

½ Mile North of the Underpass At the Foot of the Bridge
SALEM W. SALEM