

50 Cases to Confront New Grand Jury

The Marion county grand jury convenes Monday after two recent postponements and faces a waiting list of more than 50 cases.

The jury was scheduled to convene in August but two delays resulted when one member was unable to attend.

Among numerous cases to be weighed is the first degree murder charge against Charles Henry Weldon, Stayton farmer, accused of the shotgun slaying of his son, Carl, at the family home in August.

The elderly man is now in the Marion county jail pending grand jury action. He was confined in Salem Memorial hospital for sev-

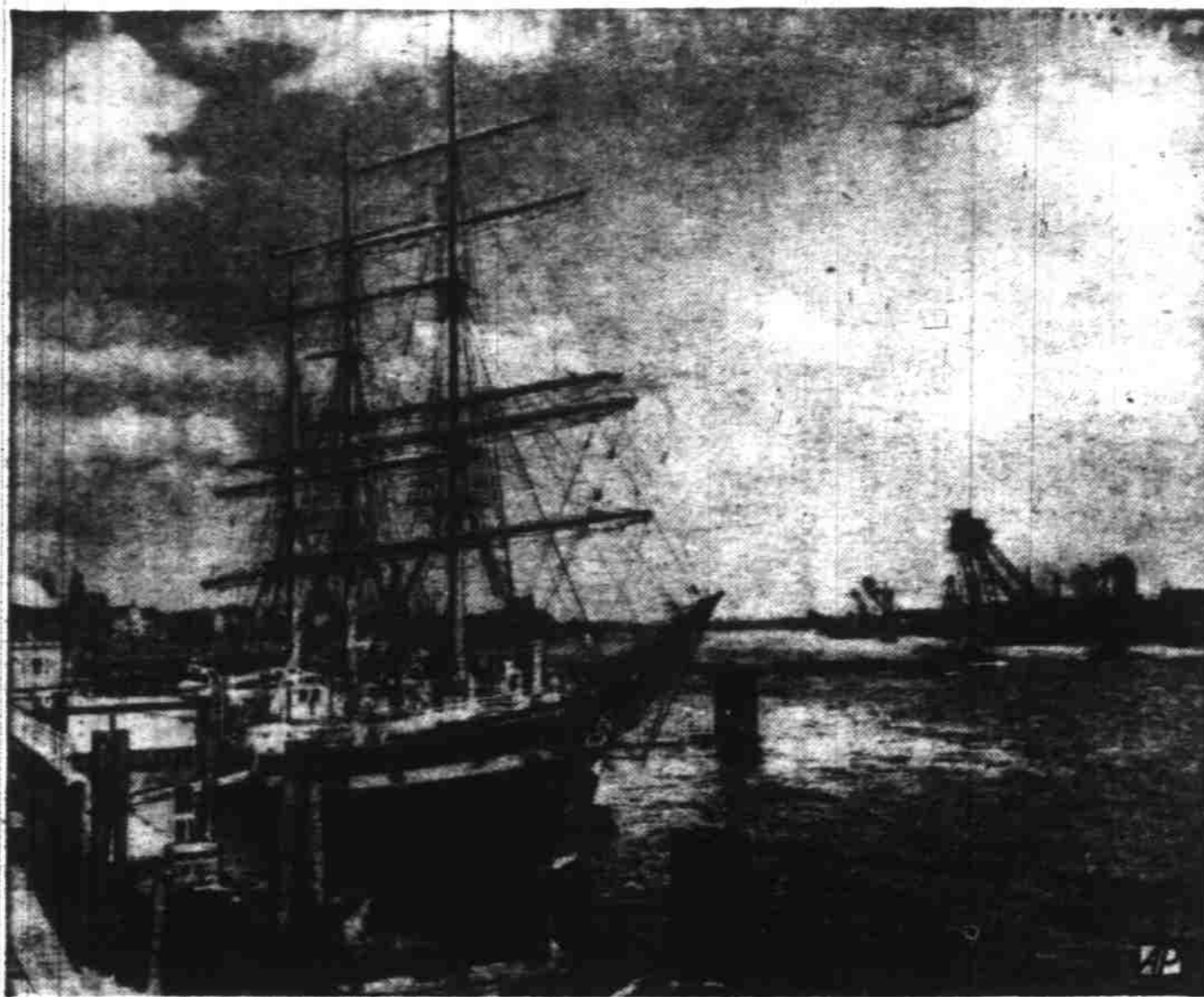
Highway 99 Group To Hire Secretary

Employment of an executive secretary for the Highway 99 association was voted at a meeting Friday in Roseburg, according to Salem delegates. Three men have already submitted applications for the position.

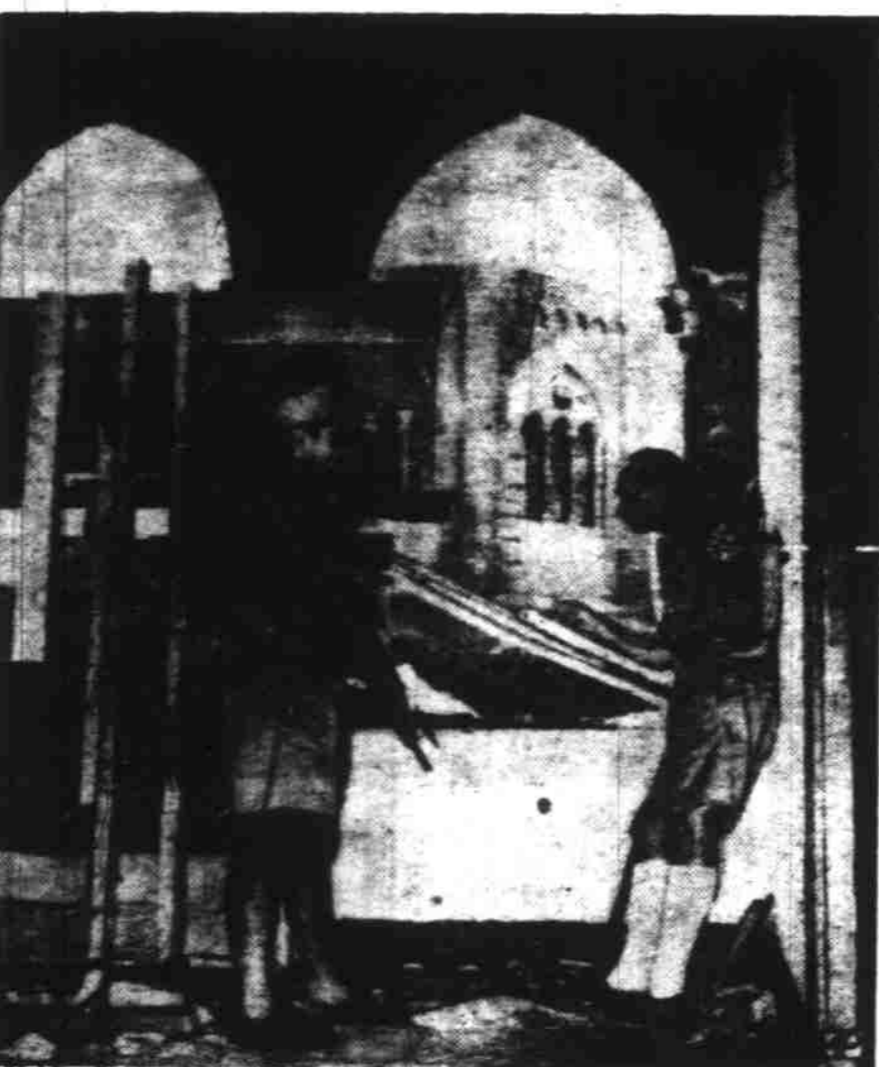
The meeting completed plans for dedication of the improved Wolf Creek highway on October 1, with Charles A. Sprague of Salem as speaker and Carl Hogg of Salem presiding at a banquet. The association's 1949 convention was set for Salem in January.

Attending from Salem were Hogg, County Judge Grant Murphy and A. A. Larsen.

Several weeks recovering from what deputy sheriffs said were self-inflicted shotgun wounds of the head and arm.



FLOATING HOTEL—This sailing vessel is one of many craft which have been converted into restaurants and hotels on Elbe River at Hamburg, Germany, badly bombed during war.



UN ON GUARD—Commandant Le Moine (right) of Rennes, France, United Nations observer in Jerusalem, watches as man's hand separates Jews and Arabs for violations of the UN truce. With him is an Israeli soldier.

Sprague Supports Suggestion to Face Courthouse North

Charles A. Sprague, member of the county courthouse commission, Saturday approved the suggestion by Pietro Belluschi, Portland architect, that the proposed new Marion county courthouse face north. Another commission member,

Karl Steiner of Jefferson, has already voted against the proposal. Ray Glatt, Woodburn, is the third non-court member of the group.

While recommending the northern direction for the front, Sprague also pointed out that every side of the building must be attractive because the building stands alone in full view from all sides. Sprague said other entrances would probably be provided.

"I believe," he concluded, "we should trust the architect's judgment for he has the training and experience to qualify him to solve such problems."

Bullet Smashes Window in House

A bullet, apparently ricocheting, shattered the glass in the upper bathroom window at the J. T. Graham residence at 399 Ellier st. Thursday night, he told city police.

Graham reported that he and his wife had been sitting at the table in the kitchen when they heard a sharp crack. Mrs. Graham discovered the broken window and the slug on the ledge Friday.

Police thought the bullet probably came from a 22 calibre rifle fired by boys shooting in an orchard near by.



Team Mates Doctor & Pharmacist

When illness strikes, you will discover how much your doctor counts on your druggist to make the medicines he prescribes do their job. Our skilled pharmacists compound prescriptions promptly.

Schaefer's Drug Store

1895 — 1948
Phone 3-5197 or 2-9123
135 North Commercial

Workers Exit As Hop, Bean Harvests End

Completion of the bean and hop harvest in the Willamette valley has released thousands of workers for late fruit picking and for eastern Oregon potatoes and other vegetables, the Oregon state employment service reported Saturday.

Prune shakers are still needed in Polk county orchards, it was announced Saturday by W. H. Baillie, manager of the Salem branch of the Oregon employment service.

Baillie also said that a few cannery workers are needed in the Salem area to replace workers who have returned to school and moved on to other areas.

Medford and Hood River regions still are short several hundred pear pickers, officials said, while the potato fields around Bend, Madras and Redmond will require additional workers by October 1.

Ontario also reported a continuing call for 200 more men in the onion, sugar beet and lettuce fields and packing houses. Apples and potatoes are coming along to help keep workers busy into December.

The employment service said the gasoline shortages so far have not curtailed the supply of harvest labor but it was urged that gasoline supply stations give continued preference to essential workers.

Accommodations are available in the Redmond labor camp and on many farms, officials said, but migrants were advised to bring their own bedding and utensils. Tent houses still can be had around Ontario, while Hood River offers cabins for those staying for the apple harvest until November 1.

Filberts, walnuts and other seasonal crops to be gathered in October in the Willamette valley will not require outside help,

ert and Betty Lou, have done extensive traveling, making their headquarters at Montpelier, Ind.

local employment office managers said. Oregon's farm placements during early seasonal peaks in berries and cherries were sixth in the nation, according to reports from Washington, D. C. Only a few southern states with many migrant workers outranked Oregon during June.

ANNOUNCING

the appointment of
Al Laue Refrigeration Co.

2360 State Street Phone 3-5443

As dealer for

INTERNATIONAL HARVESTER Refrigerators - Freezers

See the Great New

International Harvester Refrigerator

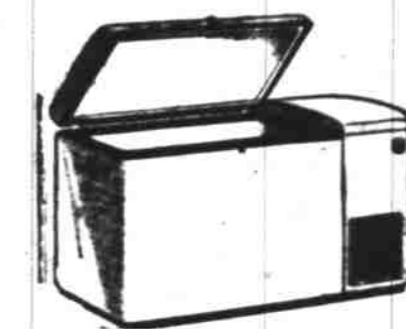


ROOM TO SPARE . . . with Spare Room in your Kitchen!

International Harvester's great new line of eight-cubic-foot models combine beautiful, streamlined styling with features that homemakers must pinch themselves to believe: 16-square feet of shelf area! Frozen food "Stowaway" freezer locker stores up to 35 pound meat "Frigidrawer" that safely holds 13½ pounds! Silent, economical "Tight-Wad" unit! Super-storage Pantry Dial!

See the New

International Harvester Freezer



with FROST-LOK FREEZ-AREA VAC-U-SEAL TIGHT-WAD and 12 other big features!



"Of Course, Madame, Your Brooch Will Be Repaired Like New!"

P. W. HALE, HOLLYWOOD JEWELER has an expert repair service for jewelry and watches! We also specialize in refinishing silverware! Have your tea set and coffee pot re-silvered in preparedness for winter entertainment!

P. W. HALE, HOLLYWOOD JEWELER

3021 Fairgrounds Rd. Telephone 3-6265

THIS MONTAG ELECTRIC RANGE

also burns Wood or Coal



MONTAG MEANS RELIABILITY

This new electric range is another addition to the famous Montag line. As with all Montag products it has been carefully built to give outstanding performance.

Come in and see the trim, new MONTAG Bungalow combination—a modern electric range which also burns wood, coal or trash. The Bungalow was designed especially to meet cooking, seasonal comfort and fuel requirements economically. Four latest-type burners and a spacious oven give you the advantages of electricity's fast, controlled heat. Solid fuels may be burned to heat a sizeable cooking surface—and provide cozy warmth for your kitchen. Let us give you complete details.

315⁰⁰

GEVURTZ

275 N. Liberty

As seen in September Town and Country . . . the most versatile coat of the season . . . exclusively ours in Botany gabardine . . . designed by Yabloukoff for Kay Saks of California . . . Wear it belted in front as sketched . . . or no belt, free and flowing or belt it tightly all the way around . . . In wonderful Travel Tones

\$79.95

SMART SHOP

115 N. Liberty