

Oregon Key State in Rural Housing Study

By Lille L. Madsen
Farm Editor, The Statesman
CORVALLIS, May 8—Oregon has been named the key state in the extensive western rural housing study, a national research project, being conducted under the agricultural research act of 1946, popularly known as the Hope-Flannagan act. It is recalled that Oregon is also the key state for the western nutritional study previously announced and now under way.

Miss Maude Wilson, professor of home economics research and housing specialist at Oregon State college, has been made regional chairman for the western states in this new project.

Objectives of the study are three fold, Miss Wilson explains. First is to find by actual calls on selected farm families the facts about their housing needs and desires. Next will be to apply laboratory studies to these facts and work out various standards of space and arrangements for use in planning rural homes. The third step will be to take the facts and standards determined in the field and laboratory studies and develop a series of actual house plans from them which will be most useful in rural western United States.

Field workers who will interview a few selected homemakers in 28 of Oregon's 36 counties are Mrs. H. R. Woodburn, Ocean Lake; Mrs. C. E. Brissenden, Klamath Falls; Mrs. J. A. Milbrath and Betty Stutz, Corvallis.

Selection of farms to be visited has been made through a scientific sampling method by which it has been found possible to get a representative cross section with a few calls. Only about 100 calls are scheduled for this state.

Agricultural experiment stations in California, Colorado, Utah, Washington and Oregon are co-operating in the regional study. R. S. Besse, acting director of the Oregon experiment station, is regional coordinator of the project.

This western regional study is part of one of national scope which includes similar working groups in the northeastern, north central and southern regions, with a southwestern region to be added later.

The study is expected to add

43 Delegates At Librarians Conference

The annual northwest librarians conference with 43 delegates representing 20 colleges met Saturday at the Willamette university library under the chairmanship of Dan Graves, Willamette librarian.

Lancaster Pollard, superintendent and editor of the Oregon Historical society, presided at the meet with a talk stressing that college librarians should make the material available for students rather than act as a guide. Francis Kemp, Reed college librarian, David Martin, CSC, University of Portland librarian and Dr. L. E. Tomlinson, Lewis and Clark college librarian, participated in the discussion.

Oregon State Archivist David C. Duniway spoke at the noon luncheon, at the Golden Pheasant, on the need for school archive departments for historical and other purposes, citing the recently begun archive at University of Montana as an example.

At the business meeting William H. Carlson, president of the Association of College and Reference Libraries and director of the Oregon system of higher education, discussed a program for recruiting new librarians. Charles W. Smith, librarian emeritus of the University of Washington, also spoke.

Marion County's Junior Deputies To Meet in Salem

New members of the Marion County Junior Deputies association from Gervais, Hubbard and Woodburn will meet with Sheriff Denver Young Tuesday night in the courthouse here.

Instructions in the recently-organized group and junior deputy badges will be given the boys by Young. Approximately 25 are expected to attend from the three towns he said.

The meeting will begin at 7 o'clock and will probably include explanations of various law enforcement agencies by interested adults the sheriff said.

P. A. Campbell, 55, Accident Victim, Dies

Perry Andrews Campbell, 55, of 632 N. Liberty st., died in a Salem hospital Saturday morning from injuries suffered Thursday when struck by a boom on a construction job in East Salem.

Funeral services will be held from the W. T. Rigdon chapel Tuesday at 1:30 p. m.

Campbell sustained fractures of the arm and shoulder and internal injuries Thursday afternoon while working with a Pacific Telephone and Telegraph company crew on a bridge near the state penitentiary on State street. The crew was lifting a large pontoon from the stream when a cable parted, dropping the boom on Campbell.

A resident of Salem for the past two years, Campbell was born in Alton, Mo., July 24, 1892, and had resided in Washington before moving to Oregon.

Surviving are his widow, Mrs. Lola Campbell of Salem; four

Extra Right-of-Way Needed for Street At Four Corners

Proponents of a move to widen Mable street in the Four Corners area have been asked by Marion county court to determine their method of securing a section of right-of-way needed along the road, the court reported Saturday.

The court has conferred with Emery Hendrickson, owner of a strip of right-of-way needed to widen the road to 60 feet. Hendrickson, reported the court, wants \$500 for the strip of land 200 feet long and 28.48 feet wide.

Proponents of the widening project have been asked whether

children, Mrs. Harry Harris, Ralph Campbell and Glenn Campbell, all of Longview, Wash., and Raymond Campbell of Salem; his father, Ralph Campbell of Longview; two brothers, W. D. Campbell of Longview and Silas Campbell of Van Nuys, Calif., and a sister, Mrs. Etta Sullivan, also of Van Nuys.

they prefer to accept the offer or to institute condemnation proceedings. Hendrickson told the court that if the road is widened it will bring it quite close to his house.

Mable street was recently taken over by the county as a county road along with a section of La-Branch avenue. Proponents of the

widening program must furnish the extra right-of-way needed.

Egyptian ships of about 1,250 B.C. were strengthened on the outside by a set of ropes called "girdles" which helped keep the vessels water-tight and added strength to withstand the pounding of the sea.

Ike Bacon Republican for Sheriff

Some Are Qualified
Some Are Friendly
Bacon Is Both
We've Never Had a War
Veteran Sheriff. Let's Elect IKE BACON—
A MAN YOU CAN TRUST.

Pd. Adv. by Bacon for Sheriff Committee.



A REPAIR JOB OR SALES & SERVICE

A piece of machinery suddenly breaks and you must shut down for repairs. Perhaps it is only a metal part that is broken. No replacement is available locally and you must send a rush order back to the factory. That takes time, and time is costly. Perhaps we could repair that broken part and put your machine back in operation within a few hours. More often than not, we can do just that. We do literally hundreds of such metal jobs, whether you want permanent or temporary repairs. We have the plant, the necessary equipment and metal fabricating experience, backed by 36 years of operation. We specialize in solving the many metal problems of Oregon's farmers and industrialists—and the list of our customers has grown with the years.

W.W. Rosebraugh Co.

"Metal Products That Last" - Since 1912

688 South 17th Street, Salem

Phone 7669

There is a Pacific furnace for every size home, whether you live in one room or a mansion. The Pacific is built for efficiency of operation and cleanliness. It is also designed to burn oil, wood, sawdust or coal and it may be converted from one type of fuel to another if and when there is any change in the local fuel supply. The Pacific is built of good metal and it is built right. It is built in Salem, by W. W. Rosebraugh Co., for whom we handle the sales and service in this area. We accepted the dealership because we have been servicing furnaces for many years and have found W. W. Rosebraugh Co.'s furnaces and sawdust burner attachments among the best on the market. We can now give you good furnace service at all times.

A. L. Cummins

A Furnace Man for 25 Years

960 Edgewater, West Salem — Shop Phone 3753 — Res. 6925

Last 6 Days

JOE'S

Upstairs Clothes Shop

Selling Out
Sacrifice Sale
Ends May 15th
At 9 p. m.

Everything Must Be Sold Regardless of Cost.

Super Quality
SUITS

New - Smart Styles. Most Wanted, Expensive 100% Wool Worsted Fabrics, Every Size—Regular, Short, Stout and Long. Single and Double Breasted Models.

1/4 & 1/3 off

REGULAR PRICES
SPORT COATS
SLACKS, PANTS &
FUR FELT HATS

At 1/4 Off

All Furnishings

At 1/2 Off

Your Last Opportunity to Buy These New, Top Quality Clothes at a Fraction of Our Regular, Plainly Marked Prices.

Notice — All Goods on Deposit Must Be Called For On or Before May 15.

Open
Every Night
Till 9 O'Clock

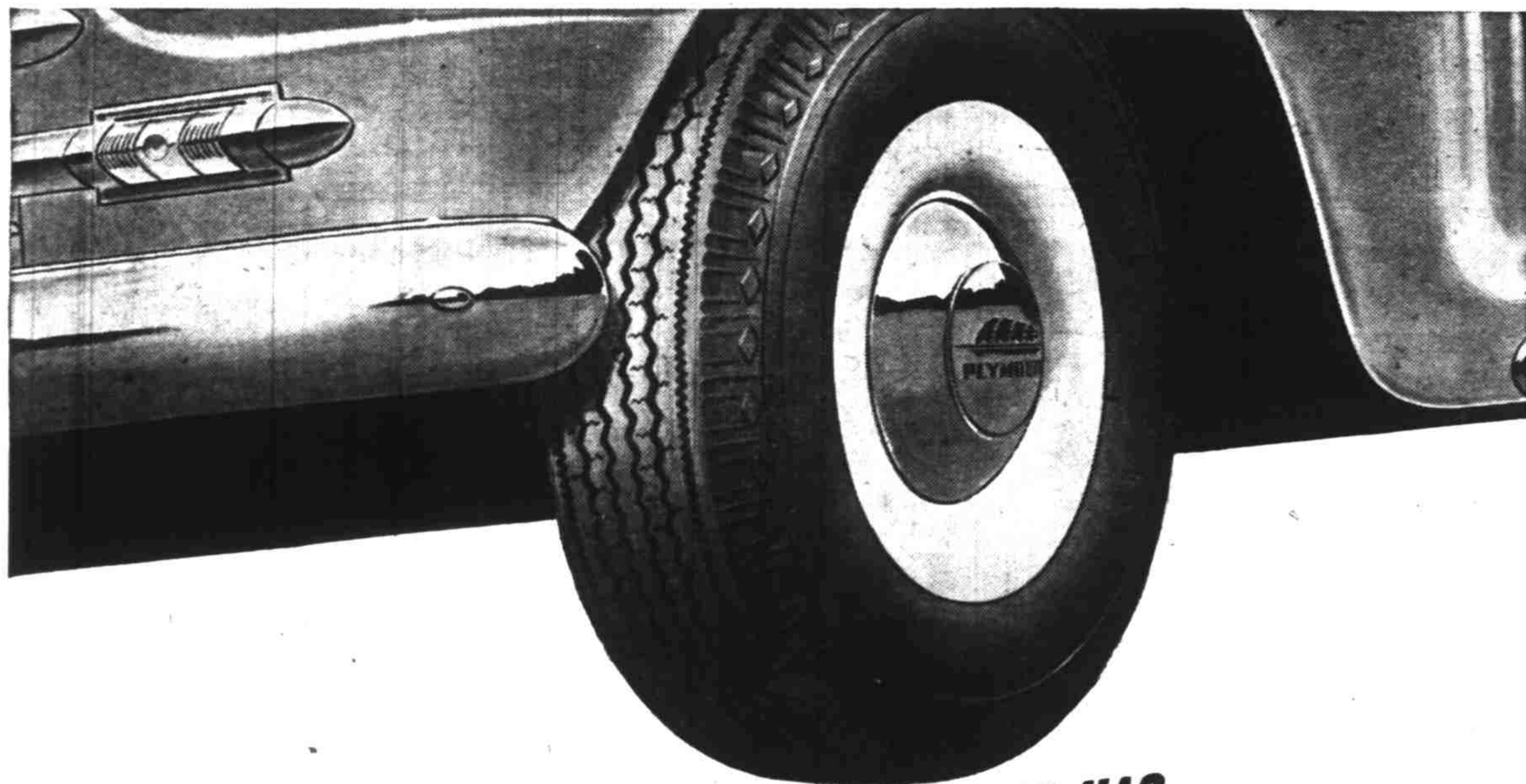
JOE'S

Upstairs
Clothes Shop

442 State St.

Above Morris Optical Co. Next Door to Nohlgren's Restaurant.

Look for the Neon Electric Flashing Save \$10 Sign Above Entrance.



ONLY ONE CAR IN THE LOWEST-PRICED FIELD HAS
SUPER-CUSHION TIRES ON NEW, WIDER SAFETY-RIM WHEELS

IT'S PLYMOUTH!

It's a sensational new combination for your greater safety and comfort—Super-Cushion Tires on new, wider Safety-Rim Wheels. And, in the lowest-priced field, only Plymouth has it. And Plymouth gives it to you as standard equipment!

The bigger, fatter, softer tires soak up road shocks from the side as well as from below. They make stopping easier and surer and give you one-third more tire mileage than ordinary pre-war tires.

Super-Cushions run cooler, too. That means your chances of tire failure are greatly reduced. But should trouble occur, you have

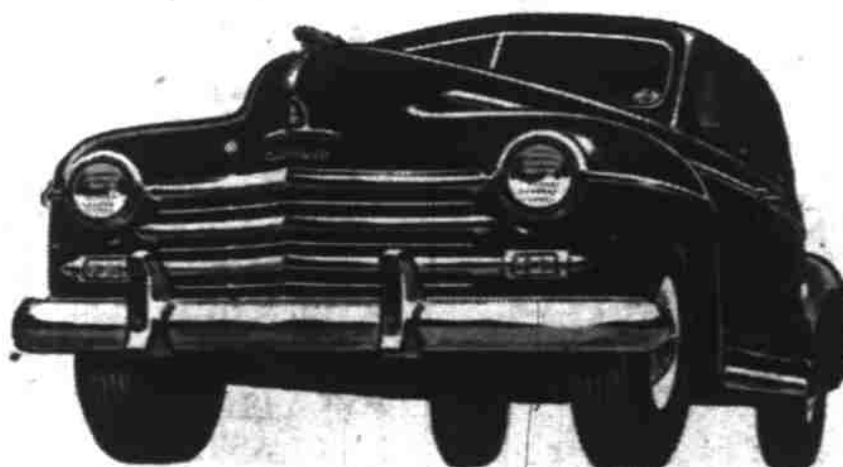
the added, positive protection of Plymouth's famous Safety-Rim Wheels. Patented retaining humps are designed to hold the tire straight and tight on the rim so you can slow to a sure, safe stop.

The combination of new Super-Cushion Tires on new, wider Safety-Rim Wheels is only one of the basic advantages you get when you get a Plymouth. Your dealer will be glad to show you the famous Quality Chart which tells the whole Plymouth value story. Study this chart and you'll agree: There's a lot of difference in low-priced cars—and Plymouth makes the difference!



PLYMOUTH BUILDS GREAT CARS . . . GOOD SERVICE KEEPS THEM GREAT. Your nearby Plymouth dealer will provide the service and factory-engineered parts to keep your present car in good condition while you're waiting for your new Plymouth. PLYMOUTH Division of CHRYSLER CORPORATION, Detroit 21, Michigan.

Looks its best from the Value Viewpoint—Plymouth



Get the whole family to go to the store and try for the

\$25,000.00

GRAND PRIZE
(PLUS 39 additional sweepstakes prizes)

IN THE PEPSI-COLA FAMILY SWEEPSTAKES

PLUS separate monthly contests during May and June: 51 prizes in Each State plus 3 monthly national prizes in the

PEPSI-COLA

\$203,725.00*

"TREASURE TOP" SWEEPSTAKES AND CONTESTS

*TOTAL CASH (including dealer prizes)

MARCH NATIONAL WINNERS



\$1000.00 awarded to Miss Ruth Finnigan, Bangor, Maine.



\$800.00 awarded to Mrs. Robert Kratschmer, Kansas City, Mo.



\$250.00 awarded to Mrs. J. S. Henley, Los Angeles, California.

PEPSI-COLA'S a winner too—beats 'em all for quality, flavor, value! Top quality, finer flavor, in every great big 12-oz. bottle. That's Value with a capital "V"—more for your money every time. Want the winner? Buy Pepsi at your store today!

GET ENTRY BLANKS AT YOUR STORE (See Winners List, Too!)

Look for hidden designs under cork of every Pepsi top