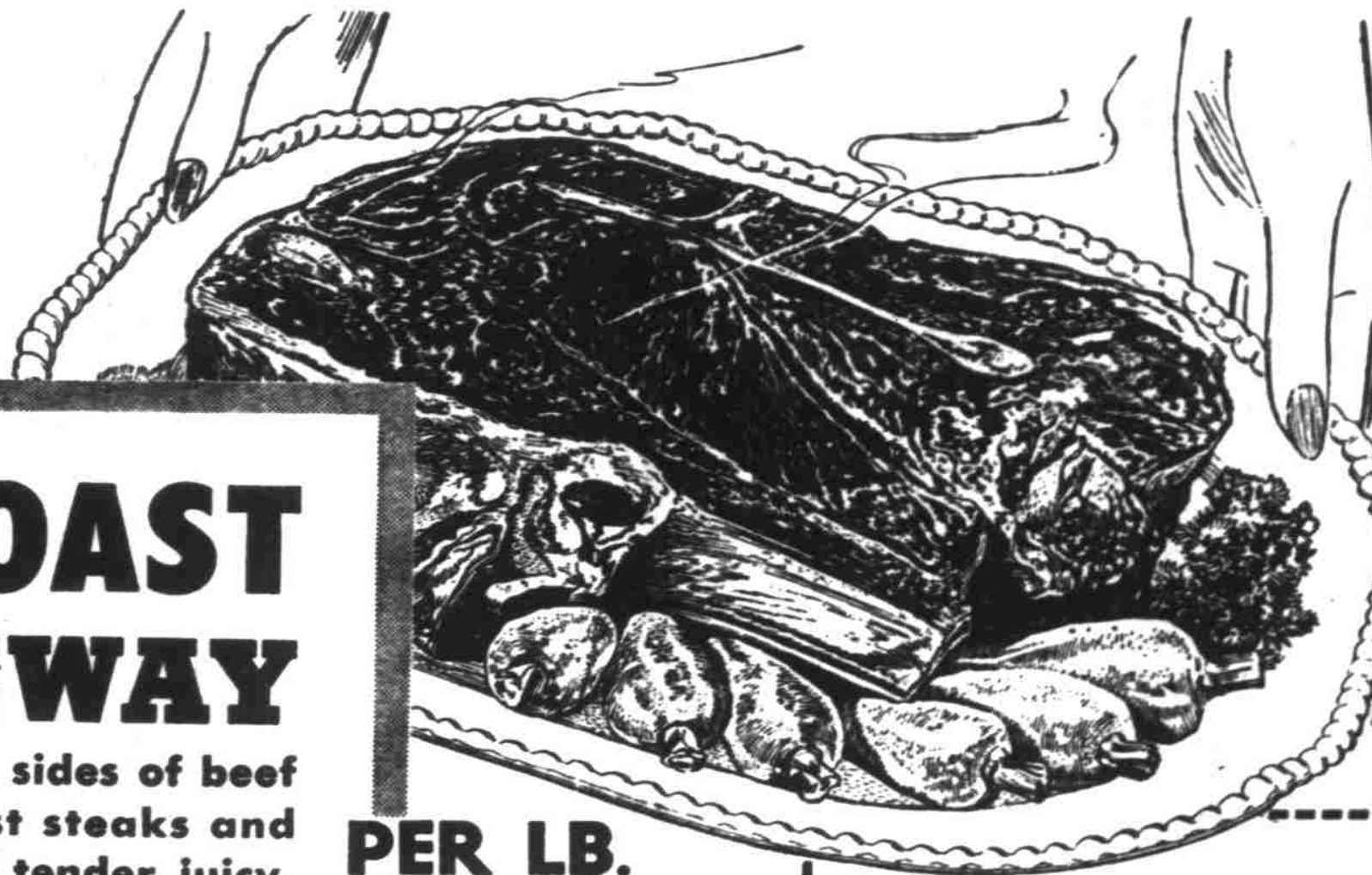


A Safeway Chuck Roast provides generous portions of tender, delicious meat . . . so your meat money goes farther. It's got the same good meat flavor as a rib roast, eats tender as a T-Bone. Just you taste and see!



# CHUCK ROAST from SAFEWAY

Cut from the same sides of beef as Safeway's finest steaks and roasts—guaranteed tender, juicy, delicious, or money back.

PER LB.  
**55c**



**Yes!**  
CHUCK ROASTS, too, are cut "WASTE-FREE" at SAFEWAY

For example: all excessive fat and protruding bone is cut away—before weighing, mind you—so that you don't have to pay for waste parts you can't use. This waste-free trimming of meat applies to other roasts and to chops, steaks and other cuts, too. That's why Safeway Meat prices represent real value, every time!

### Other Waste-free Meat Values

- Standing Rib Roast**  
Safeway Guaranteed Lb. **65c**  
Beef. Trimmed Waste-free
- T-Bone STEAKS**  
As tender as you could wish Lb. **79c**
- Pork Roast**  
Meaty Shoulder Cut Lb. **49c**
- Pork Loin Chops**  
Just the lean center cuts Lb. **69c**

- BACON**  
By the piece  
Buy it in the slab and save Lb. **69c**
- Bockwurst Sausages**  
Yes! They're here now. Lb. **57c**  
What a treat.

- Link Sausage**  
Nice and Meaty—Won't fry away to nothing. Lb. **59c**
- Skinless Wieners**  
An economical dinner Lb. **49c**
- FRYERS**  
Eviscerated—disjointed Ready for the pan Lb. **75c**
- ROASTERS**  
Ready for the oven Lb. **75c**
- Fricassee Fowl**  
No waste—Ready for the pan—Fine stewers, too Lb. **65c**

#### BEEF POT ROAST

4 lbs. beef chuck 3 tbsps. lard  
Clove of garlic 1 cup water  
(if desired) ½ tsp. Worcestershire sauce  
3 tpsps. salt  
¼ tsp. pepper ¼ cup chili sauce

Rub meat thoroughly with bruised clove of garlic. Add salt and pepper. Brown pot roast slowly on all sides in hot lard melted in heavy kettle with tight-fitting lid. Add water, Worcestershire sauce and chili sauce. Cover and simmer gently until meat is tender, about 3½ hours. Turn meat occasionally. Add more water, if necessary, a little at a time. Make gravy by thickening liquid with flour smoothed in water (1 tbsps. flour to each 1 cup of liquid). Serve 4, with leftovers.

### Do You Know About Our WASTE-FREE Sea Foods?

- Yes, Safeway offers you finest quality Sea Foods—Ready for the pan. No Waste. No mess and a wide variety from which to select. Uniform high quality—your satisfaction guaranteed.
- SALMON STEAKS**  
Waste-free. Ready for the pan. Delicious flavor—every bite tasty. Lb. **69c**
  - HALIBUT STEAKS**  
Waste-free. Ready for the pan. Cooks white and flaky. Fine flavor. Lb. **59c**
  - FILLET OF SOLE**  
Boneless—No Waste (just broil or fry.) Fleshy, delicious fresh meat. Lb. **48c**
  - Smoked Cod Fillets . . . . Lb. **53c**
  - Salt Codfish . . . . 1-lb. pkg. **53c**
  - Kipperd Salmon . . . per lb. **73c**

Meat Features Effective Friday and Saturday.

## Be sure . . . shop SAFEWAY

### Cream Corn

Country Home Yellow, sweet fancy corn No. 2 can **17c**

### Peach Slices

Slices O' Gold brand Freestone Peaches No. 2½ can **29c**

### Canned Food Values

- Fancy Corn Country Home Whole Kernel—G. B. No. 2 can **18c**
- Cream Corn Gardenide—G. B. No. 2 can **16c**
- Fancy Corn Butter Kernel Whole Kernel No. 2 can **21c**
- Fancy Peas Sugar Belle No. 2 can **19c**
- Fancy Peas Libby Garden-Sweet No. 2 can **20c**

- Tomatoes Del Monte—Solid pack No. 2 can **25c**
- Kidney Beans Joan of Arc No. 2 can **15c**
- Chili Con Carne Van Camp (with beans) 1½/2 can **24c**
- Deviled Ham Libby brand No. ¼ can **17c**
- Maine Sardines Palm No. ¼ can **14c**

### Fruit and Juice Values

- Apricot Halves Petite—Unp. 2½ can **27c**
- Kadota Figs Readley No. 2½ can **25c**
- Oregon Peaches Jory—Sliced 2½ can **29c**
- Apricot Nectar Heart Delight 12-oz. can **11c**
- Peach Nectar Highway 12-oz. can **11c**
- Tomato Juice Sunny Days No. 2 can **10c**

### Packaged Foods

- Figs White 2-lb. pkg. **39c** Black 2-lb. **29c**
- White Rice Pearl 8-lb. **79c** 3-lb. **49c**
- Small White Beans 2-lb. pkg. **43c**
- Lima Beans California—Large 3-lb. pkg. **65c**
- Red Beans Idaho 2-lb. **39c** 3-lb. **89c**

### Spreads—Etc.

- Jelly Tea Garden, Straw-Apple 12-oz. **31c**
- Apricot Preserves Duke Ranch 1-lb. jar **27c**
- Loganberry Preserves Shady Oak 1-lb. jar **29c**
- Raspberry Preserves Shady Oak 1-lb. jar **35c**
- Strawberry Preserves S. Oak 1-lb. jar **39c**
- Orange Marmalade King Kelly 2-lb. jar **39c**
- Peanut Butter Beverly 1-lb. jar **37c**
- Strained Honey Desert Bloom 8-lb. **\$1.29**
- Sleepy Hollow Syrup 12-oz. bottle **24c**

Let's talk about **SOME LOW Cost-of-Living VALUES!**

Let's see how we can make living costs lower. These values are only a few of the attractions you will find at Safeway.

- Salad Dressing Cascade Pint **21c**
- Corned Beef Hash Libby No. 2 can **29c**
- Baby Lima Beans 2-lb. pkg. **35c**
- Tomatoes Gardenide No. 2 can **19c**
- Sliced Beets Highway No. 2 can **10c**
- Marmalade Palm—Orange 1-lb. jar **15c**
- Fancy Spinach Emerald Bay No. 2½ can **17c**
- Tomato Sauce Gardenide can **5c**
- Airway Coffee Fresh Whole Bean 1-lb. bag **40c**
- Nob Hill Coffee 1-lb. bag **42c**
- White Magic Bleach Quart **11c** ½-gallon **19c**

### Coffee Values

- Edwards Coffee 47c 2-lb. 93c 4-lb. **1.85**
- Nob Hill Coffee 2-lb. bag **83c**
- Airway Coffee 3-lb. bag **1.18**
- Hills and M.J.B. Coffee 1-lb. can **49c**
- Maxwell House Coffee 1-lb. can **49c**
- Golden West Coffee 1-lb. can **49c**
- Chase & Sanborn Coffee 1-lb. can **49c**
- Sanka Drip Coffee 1-lb. can **55c**
- Sanka Instant Coffee 2-oz. jar **43c**
- Borden Instant Coffee 2-oz. jar **39c**

### Miscellaneous Values

- Pabst-ett Cheese ½/2-oz. pkg. **29c**
- Gouda Cheese Maybud—Baby 11-oz. **59c**
- American Cheese Dutch Mill 2-lb. **\$1.09**
- Ripe Olives Monterey Inn No. 1 can **12c**
- Ripe Olives Ebony—Medium 4½-oz. **15c**
- Tomato Ketchup Heinz 14-oz. bottle **25c**
- Chili Sauce Manito 1½/2-oz. bottle **23c**
- Mayonnaise Piedmont Quart **85c**
- Salad Oil Masala Pint **47c**
- Cider Vinegar Heinz Quart bottle **21c**
- Sno-White Salt 4-lb. pkg. **13c** 24-oz. **5c**
- Cat Food Puss N' Boots 8-oz. can **8c**
- Cigarettes Popular brands Carton **1.37**

### Sunnybank Margarine

The margarine with the sweet, fresh flavor **LB. 39c**

### Fancy Pitted Dates

Sair brand 1-lb. cellophane pkg. **29c**

### Soft Drinks—Candies

- Sno-Cola Cola Beverage 2 quarts **27c**
- Root Beer Creamed 2 quarts **27c**
- Orange Soda Golden Bubble 2 quarts **27c**
- Lemon Drops Ultra Fine 6-oz. pkg. **10c**
- Hard Candy Ultra Fine 1-lb. pkg. **19c**
- Candy Bars Solo Cub each **4c**

### Soaps and Bleach

- Toilet Soap Sierra Fine Bar **11c**
- Toilet Soap Cashmere Bouquet 2 bars **25c**
- Swan Soap Regular size bar **12c**
- Su-purb Soap Oranoleated 24-oz. **33c**

Grocery Features Effective Friday through Monday.

This Ad Effective All Safeway Stores — Salem - Silverton - Dallas.

EAT MORE Fresh FRUITS and VEGETABLES and help LOWER THE COST OF LIVING In Your Family!

## APPLES!

For cooking or eating—Safeway has the apple for your purpose. Buy now during the Grower-Consumer Campaign

- Winesaps Extra fancy and fancy 3 lbs. **25c** Box **2.98**
- Red Delicious Extra fancy and fancy 3 lbs. **25c** Box **2.98**
- Red Beauties Extra fancy and fancy Lb. **12c** Box **3.89**

Produce Features Effective Friday and Saturday.

- AVOCADOS Famous Calaveras, Ripened! Lb. **39c**
- TABLE GRAPES Crispy—Red Emperors Lb. **12c**
- BROCCOLI Garden fresh, bright green Lb. **15c**
- CARROTS Smooth uniform slices—No Tops Lb. **12c**
- CAULIFLOWER White heads, solidly formed Lb. **13c**
- PARSNIPS Full Flavor—Fresh and Firm Lb. **9c**
- SWEET POTATOES Always welcome Lb. **13c**
- SOUTHERN YAMS Try them candied Lb. **12c**

## Grapefruit

Inexpensive and at their best. Serve them often.

- Texas Pinks lb. **8c** Half Box **2.50** Full Box **4.95**
- Desert Whites lb. **5½c** Half Box **1.39** Full Box **2.69**
- LEMONS Very fine quality—Thin skins and very juicy. Keep some on hand. L.B. **13c**