

Chicago Stock Show Winners Auction Entries

CHICAGO, Dec. 4 (AP)—Victorious exhibitors at the forty-eighth International Livestock Exposition left the auction rings today with their pockets jingling with ready cash from sales of prize winning cattle, sheep and swine.

Despite lower prices paid for the grand champion steer and the grand champion carload of cattle, first to be sold today, William E. Ogilvie, the exposition's general manager, said today sales were expected to reach \$2,500,000 by the end of the show Saturday.

"There is no accounting for the fall in bidding on the grand champions of the exposition," Ogilvie said. "These sales are unpredictable and have no relation to the general price trend."

The grand champion steer, Big Boy, a shorthorn owned and shown by six foot, two inch Claude Milwee, 18-year-old Fuch Farmer of America from Fort Cobb, Okla., sold at auction for \$8 a pound. The price was \$2.50 less than was paid for the 1946 king of beef animals.

Bert Overman, chief cattle buyer for Wilson & Company, bought the steer for the Davidson Meat company, paying a total of \$8,800 for the 1,100 pound animal. Overman said the Davidson company, purveyors to hotels and restaurants, planned to slaughter the calf for distribution among its customers.

The record price for a grand champion at the International, \$10.50 a pound, was paid by the Firestone Tire and Rubber company, Akron, O., last year for Royal Jupiter, an Oklahoma A. and M. college entry.

Wheat Prices Lose Ground

CHICAGO, Dec. 4 (AP)—Rain and snow over a wide area of the southwest today caused a steep downturn in wheat prices on the board of trade. The bread cereal lost as much as 6 cents and ended right on the bottom.

Wheat's action was not followed by other grains. Corn moved up.

To Attend Luncheon

Mrs. George Croisan, Mrs. Donald H. Upjohn, Mrs. Carl W. Emmons, Mrs. Glenn Paxson and Mrs. Oscar I. Paulson will motor to Portland today to attend the state board meeting of the Oregon State Mothers. The affair will be held at the Multnomah hotel with luncheon slated for 1 o'clock.

Mrs. Croisan is president of the Salem Oregon State mothers and Mrs. Paulson is state vice-president. The other three matrons are members of the state board.

Miss Kay Langdon has returned to Washington, D.C., after a fortnight's visit in the capital with her parents, Mr. and Mrs. F. B. Langdon. She came west to be here for Thanksgiving. Miss Langdon is in th WAVES in the naval air transport service.

ward as demand for the cash grain remained good and shipments to market was slowed by persistent rains. Oats were steady most of the session, but jumped toward the close.

Wheat closed 3/4 to 6 cents lower, December \$3.04-3.03 1/2, corn was 1/2-1 1/4 higher, December \$2.80 1/2-2.80, oats were 1/2-1 1/4 lower, December \$1.25 1/2-1/4, and soybeans were 2 cents lower, March \$3.84.

Navy Reserve Training Plans In Full Swing

With more than 92 per cent of its required complement of 222 men and officers already inducted, Salem's naval reserve unit announced at its meeting Thursday night that the training program is in full swing.

Twenty-five new enlistments were accepted. With only 15 enlisted men short of its goal, the unit hopes to complete its complement by its next meeting on Thursday night in building T-514, Salem airport. If this is accomplished, officers said last night, then the unit will have completed its enlistment program in 85 days from its beginning. The 13th naval district record for a naval reserve unit in filling its complement is 80 days.

All men living within a 50-mile radius of Salem are eligible to apply for membership in the unit. Information may be obtained at the naval reserve Salem headquarters in the city hall.

The training program is progressing rapidly, unit officers showed last night. Apprentice seamen are learning semaphore signaling, knot tying and instructional training in naval procedure. All other rates have a training program going, and the unit is now compiling a waiting list for certain filled rates.

Salem men who enlisted Thursday night include Apprentice Seaman Jack L. Harris, William B. Armstrong, Truman W. Masseur, Donald S. Rudd, Fred S. Smith

No. 13,088
In the Circuit Court of the State of Oregon for Marion County Probate Department
In the Matter of the Guardianship

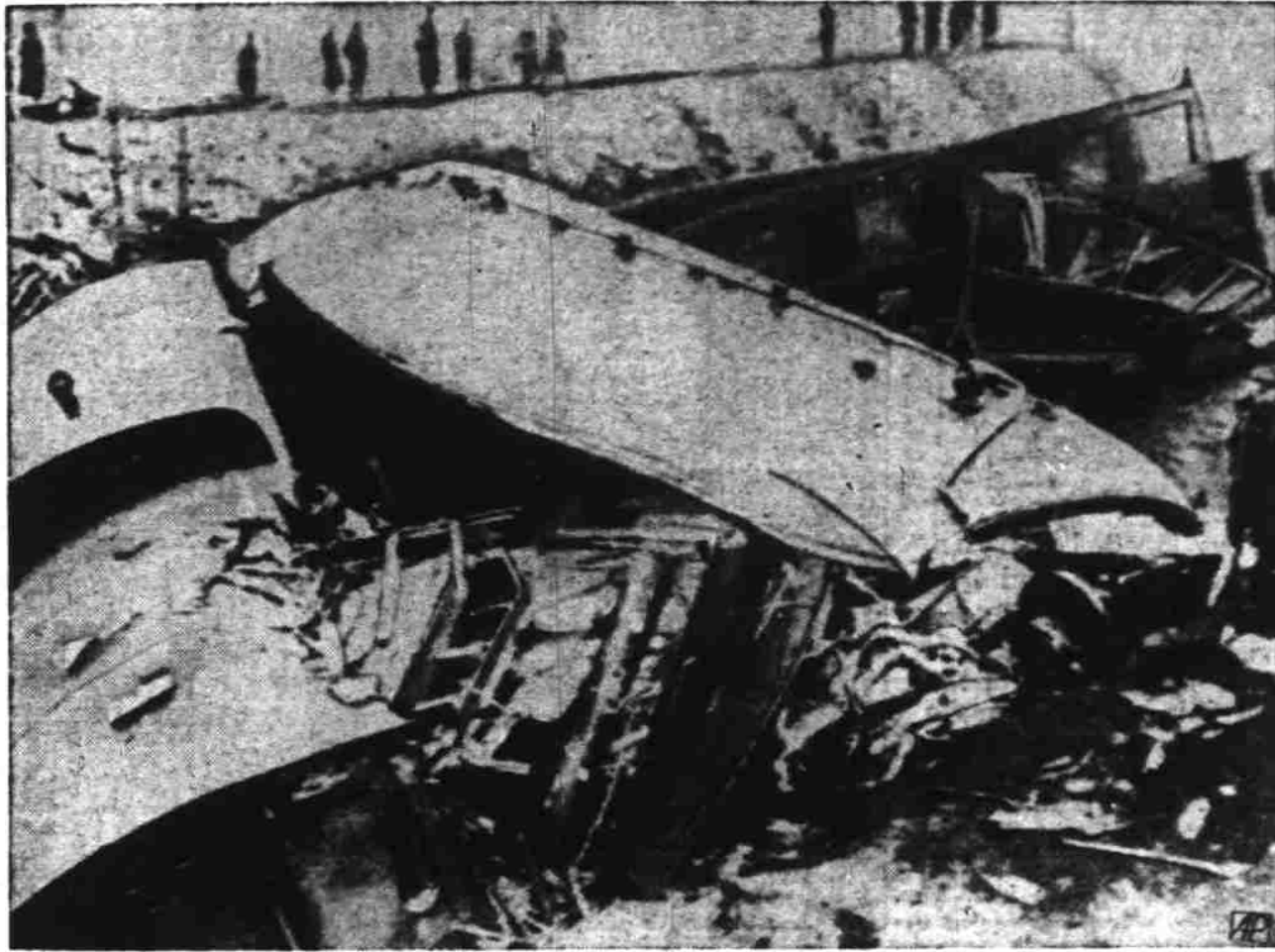
MERLE WILLIAM BURDICK, a Minor
CITATION
To: Cynthia Diana Burdick Aruold, mother and guardian of said minor in the State of New York, and all other persons whom it may concern.

IN THE NAME OF THE STATE OF OREGON: You, and each of you, are hereby required to appear in the above entitled court and cause, on the 31st day of December, 1947, at the hour of ten o'clock A.M. of said day, at the Circuit Court Room in the County Court House at Salem, in Marion County, Oregon, to show cause why an order should be granted for the sale of the interest in real property belonging to the estate of the above named minor, to-wit:

An undivided 1/15th interest in the following premises:
Lots 11 and 12, Block 14, Englewood Addition to the City of Salem, Marion County, Oregon (See Vol. 2, page 15, Record of Town Plats for said county and state).

WITNESS the Honorable E. M. Page, Circuit Judge, with the seal of the above entitled Court affixed, at Salem, Oregon, this 25th day of November, 1947.
s/ H. A. JUDD
County Clerk
By T. L. Hamilton, Deputy
(COURT SEAL) N 28-D 5-12-19

Wreckage of Paris-Lille Train



PARIS, Dec. 4 — The splintered wreckage of a French passenger train, enroute from Paris to Lille, is strewn along the tracks near Arras after leaving the rails. It was estimated at the Arras hospital that at least 20 persons died in the wreck. (AP Wirephoto via radio from Paris to The Statesman.)

and Don Eline and S2 John W. Alyea, and S1 Loren K. Dunham. Others inducted.

Other appointed seamen taken in include Alvin H. Lee, Orville R. Busby, Adam S. Mack, Harvey A. Kendall, Lester D. Wallace all of Aumsville; William E. Mertz, Norman R. Lail, Florence U. Frichle and Kenneth J. Bodigheimer, all of Stayton; Raymond E. Elser and Lawrence H. Bower of Turner; Robert B. Lester and Marvin H. LeRud of Silverton; Jack L. Wheeler of Mehama, Richard D. Nienke of West Stayton, and Gerald L. Pettit of Independence. CAETM P. W. Bielek of Salem was accepted on an associate enlistment.

Direction of Stocks Down

NEW YORK, Dec. 4 (AP)—The general direction still was downward in today's stock market although assorted favorites contested the shift with moderate success and little real weakness appeared. Year-end tax selling again was

Stocks and Bonds

Compiled by the Associated Press

Stock Averages	Dec. 4	15	60
Industrial	90.8	93.3	95.7
Rails	31.1	33.6	35.7
Utilities	91.1	93.6	95.7
Previous day	91.1	93.6	95.7
Thursday	91.1	93.6	95.7
Week ago	92.2	94.0	95.9
Month ago	92.3	93.3	94.6
Year ago	85.5	95.1	94.3

Bond Averages	Dec. 4	10	10
Thursday	88.3	100.1	99.7
Previous day	88.3	100.3	99.8
Thursday	88.3	100.3	99.8
Week ago	88.8	100.3	100.5
Month ago	90.6	101.3	102.4
Year ago	83.1	102.9	103.6
1947 low	88.2	100.1	99.7
1947 high	92.1	103.1	103.7

a handicap. Accounts also were trimmed because of skepticism over possible congressional economic moves and explosive elements contained in the disturbing French and Palestine situations. Some professional bidding was credited to the thought that the list still could negotiate a technical recovery from the November slide.

Transfers of 970,000 shares compared with 920,000 the day before. Early losses running to a point or more were reduced in most cases in the late hour.

Salem Market Quotations

BUTTERFAT	91
Premium	91
No. 1	79
No. 2	79
PRINTS	86
Wholesale	86
Retail	91
EGGS — BUYING	81
Extra large	51
Medium	51
Small	51
Pullets	38
Chickens	38
SGGS — Selling Price	66
Wholesale, large	72
Retail, large	72
Retail, medium	65
POULTRY	35
Colored hens No. 1	35
No. 2	36
LYERS	30
LIVESTOCK (By Valley Pack)	20.00
Woolled lambs, choice	up to 12.00
Yearling	up to 12.00
Sheared lambs	up to 19.50
Ewes	2.00 to 7.00
Fat dairy cows	13.00
Cutter cows	6.00 to 11.50
Dairy heifers	9.00 to 14.50
Calfers (300 to 450 lbs.)	up to 21.00
Culls	10.00 to 17.50
Veal (150 to 300 lbs., choice)	23.50

Portland Produce

PORTLAND, Ore., Dec. 4 (AP)—Butterfat, tentative subject to immediate change, premium quality maximum of 35 of 1 per cent acidity, delivered in Portland, 80-85c lb.; first quality, 88-91c; second quality, 82-85c; valley routes and country points 2 cents less than first, 86-88c.

Butter — Wholesale, f.o.b. bulk cubes: Grade AA, 93 score, 81c lb.; A, 92 score, 80c; B, 89 score, 77c; C, 85 score, 74c.

Cheese — Selling price to Portland wholesalers: Oregon singles, 42 1/2-51 1/2c; Oregon, 12-lb. loaf, 44 1/2-53 1/2c.

Eggs — To wholesalers, A grade, large, 62 1/2-63 1/2c; medium 59 1/2c; A grade, small, 49 1/2c; B grade, large, 50 1/2-53 1/2c.

Current receipts, 51-55c; buyers pay 2-3 1/2c below wholesale quotations on graded basis for best henery eggs.

Dressed turkeys — (Quoted to growers on dressed basis), grade A, toms, 35c lb.; grade A young hens, 45c.

Dressed turkeys — (To retailers): A grade young hens, 51-53c lb; toms, 41-42c lb.

Live chickens — Paying price to producers: No. 1 broilers under 2 1/2 lbs., 28c; fryers, 2 1/2 lbs. to 3 1/2 lbs., 28-30c; 4 lbs. and over, 31-32c; fowl, Leghorn, under 4 lbs., 18-20c; 4 lbs. and over, 21-24c; colored fowl, all weights, 25-30c; stags, all weights, 12-14c.

Rabbits — Average to retailers, 45-50c.

Portland Grain

PORTLAND, Ore., Dec. 4 (AP)—Wheat: No futures quoted. Cash wheat (bid): Soft white 2.88; soft white (excluding Rex) 2.88; white 1947 low 2.88; western red 2.88; hard red winter: Ordinary 2.88; 10

35c lb, dressed; price to producers, 45c; fryers, live, white, 24-26c; colored, 22-23c; old or heavy, 14-16c.

Fresh dressed meats — (The following dressed meat prices quoted wholesale to retailers for fresh meats are in dollars a hundred pounds as reported by the USDA market news service at North Portland):

Veal and calf — Choice 38.00-39.50; good 35.00; commercial 32.00-36.00; utility 30.00-31.00.

Beef — Steers — Good 42.00-42.50; commercial 39.00-39.50; utility 33.00-36.00; cow commercial 30.00-32.00; utility 28.00-32.00; cutter and canner 29.00.

Beef cuts (good steer, heifer)—hind quarters 43.00-50.00; rounds 43.00-47.00; full loins trimmed 68.00-70.00; triangles 38.00-37.00; square chucks 43.00-45.00; ribs 57.00-58.50; fore quarters 42.00-43.00.

Lamb and mutton — Lamb—choice and good, 41.50-43.00; commercial, all weights, 38.00-39.00; mutton—good, 70 lbs. down, 17.00-18.00.

Pork cuts — Loin, No. 1, 8 to 12 lbs, 51.00; shoulders 41.00; spareribs, 3 lbs. down, 45c lb.

Cascara bark — Dry, 23c lb. Wool — Valley, coarse and medium grades, 45c lb.

Mohair — 42c lb on 12-month growth. Onions — 50 lb sacks, Ore. Brooks, yellow, No. 1 med., 2 1/2-3 1/2c; No. 1, 1.65-1.75; broilers, No. 1, 10-12, 45-50c; No. 2 med., 50-55c; white broilers, 10c lb. 45-50c; Yakima, yellow, large, 4.00-4.10; Idaho Spanish, large, 3.90-4.00.

Potatoes — Ore. Deschutes and Klamath russets, No. 1, 4.25-4.50; No. 2, 1.15-1.25; 15-lb. 35-80c; No. 2, 80-1.65-1.75; 100-lb No. 1 bakers, 4.30-4.90; No. 2, 3.75-4.00.

Hay — U.S. No. 2 green alfalfa or better, carload lots, f.o.b. Portland, 33.50-35.50 ton; U.S. No. 1 timothy, eastern Oregon or Washington, carload lots, f.o.b. Portland, 33.00-36.50; oats and vetch, mixed hay, uncertified clover hay, 24.50-26.50; 4-Williamette valley farms, depending upon quality and location.

Salable sheep 125, total 1700; market active, steady; good-choice 180-225 lb weights 27.50; 250-320 lb 25.50; old 35-45 lbs 25.00; 125-145 lb 23.00-50; good 360-450 lb sows 24.00-50; good-choice feed-

lots offered, quoteable to Wednesday's top of 23.00; common lambs down to 18.00; good-choice ewes salable 8.90-9.00.

New York Stock Quotations

NEW YORK, Dec. 4 (AP)—Today's closing quotations:

Al Chem & Dye	197	Gen Foods	35 1/2	Rayonier	30 1/2
American Can	81 1/4	Gen Motors	57 1/2	Rayonier pfd	36 1/2
Am Power & Lt	7 1/2	Goodyear Tire	43	Reynolds Met	25 1/4
Am Tel & Tel	152 1/2	Gt North pfd	35 1/2	Richfield	16 1/2
Anaconda	33 1/2	Int Harvest	88	Safeway	20 1/2
Athlison	82 1/2	Int Paper pfd	53	Sears Roeb	37
Bendix Avia	30 1/2	J Manville	40 1/2	Sinclair Oil	15 1/2
Beth Steel	98	Kennebec	45 1/2	So Pacific	42 1/2
Boeing Air	21 1/2	Long Bell A	22 1/2	Stan Brands	23 1/2
Calif Pack	31 1/2	Mont Ward	52	Studebaker	19 1/2
Canadian Pac	10 1/2	Nash Kelvin	15 1/2	Union Oil	9 1/2
Case J I	43 1/2	Nat Dairy	27 1/2	Un Pacific	15 1/2
Chrysler	61	N Y Central	12 1/2	Un Pacific	15 1/2
Comwith Sou	2 1/2	Northern Pac	18 1/2	Un Airlines	16 1/2
Cons Edison	21	Pac Am Fish	18 1/2	Un Aircraft	22 1/2
Cons Vultee	12 1/2	Pac Gas Elec	35 1/2	U S Steel	75 1/2
Crown Zel	32 1/2	P T & T	91 1/2	Warner Bros	12 1/2
Curtis Wr	4 1/2	Penny J C	43 1/2	West Elec	27 1/2
Douglas Air	48	Radio Corp	9 1/2	Woolworth	45 1/2
Dupont de Ne	184 1/2				
Gen Electric	34 1/2				

Salable sheep 125, total 1700; market active, steady; good-choice 180-225 lb weights 27.50; 250-320 lb 25.50; old 35-45 lbs 25.00; 125-145 lb 23.00-50; good 360-450 lb sows 24.00-50; good-choice feed-

lots offered, quoteable to Wednesday's top of 23.00; common lambs down to 18.00; good-choice ewes salable 8.90-9.00.

When Quality is Important

Look for the Complete Line of

HEINZ BABY FOODS

CEREALS, FRUITS, DESSERTS, VEGETABLES, MEAT FOOD PRODUCTS

78-Year Reputation Behind Heinz Baby Foods

When it comes to

LOWER PRICES

and

BETTER VARIETY

SHOP AT

PIGGY WIGGLY

Sunshine Krispy Crackers

2-lb. carton **45c**

Swift's **Baby Food**

Strained **18c**

Diced **27c**

Waxtex **WAX PAPER**

125-ft. roll **20c**

Friskies CUBES AND MEAL

COMPLETE DOG FOOD

★ The only food your dog needs! ... easy to feed... dogs love it! Economical.

Meal or Cubes 2-lb. pkg. **32c**

CURTIS MARKET

"THANKS" for a wonderful Thanksgiving business. And we know by now that you must be fed up with turkey. etc. and really crave some of the real good standbys. BEEF, VEAL, LAMB and PORK. We offer for this week:

Prime Rib of Steer Beef Swift's Branded Rolled or Standing, lb. **69c**

Roast uncovered in a slow oven to retain maximum juiciness and flavor.

SWIFT'S BRANDED **Roast of Veal** Shoulder cut Meaty and tender lb. **51c**

An economical roast full of juicy goodness and flavor.

SWIFT'S BRANDED **Premium Lamb Chops** Shoulder cuts They're healthful lb. **45c**

Doctor's sometimes say—"Eat More Lamb"—there must be a reason.

SWIFT'S BROOKFIELD **Link Sausage** Cello Halves Pound Cartons lb. **69c**

These are the finest that millions favor for flavor.

FRESH FISH — FRYERS

ORDER YOUR XMAS TURKEY EARLY

For Meat to Eat—We Can't Be Beat

"Herb" Curtis

FROZEN FOOD SPECIALS

Top Frost Pans 12-oz. pkg. **19c**

Starr Sliced Peaches 16-oz. pkg. **13c**

Mix. Vegetables 12-oz. pkg. **29c**

Pumpkin Pie Mix 16-oz. pkg. **25c**

PIGGY WIGGLY

FOR SUPER VALUES EVERY DAY

North Capitol at Market Street

ROOFING

Johns-Manville Shingles Applied

Immediate Application

FREE ESTIMATES

Mathis Bros. Roofing Co.

164 So. Commercial Phone 4642

Allurement for a lady...

Chantilly

Endearing Chantilly, fragrance of feminine charm—bewitching, lovely, lingering.

VERY SPECIAL: Chantilly "BEAU CHARMER"

Pink and pretty gift box holds a bottle of Chantilly Perfume and a cobwebby white Chantilly Handkerchief edged with delicate wide lace.

\$2.50 (plus tax)

Miller's

Home Town Folks

HELLO LIZ!—DON'T YOU EVER TRADE ANYWHERE BUT THE STORE?—NO MAN IN NEVER DOES TRADE NO ALICE ELSE!

WHY NOT SHOP AROUND SOME TIMES?—THERE'S NO LIES IN BUYING THERE?—WHY NOT TRY SHO IS A GOOD LAY AGAINST IT!

IT'S DE LAW DAT SAYS—AN GOTTA SEE DOLLARS WORTH FOR A DIME—AND DEY AINT NO PLACE ELSE WHERE AN CAN DONEO IT!

THAT'S A FACT!

You Bet. They're Talking About

Salem Home Furn. Co.

A world of PRACTICAL gifts!

Open to 9 p. m. Fridays

Electric Aladdin Lamps

Ass'l. Designs **\$6.95**

Beginning at **\$10.95**

Lighted base and fluted shade **\$10.95**

lamps, ass't. **\$10.95**

Richly Finished Sewing Cabinet

Walnut or Mahog. Ven. **\$29.95**

Smaller Cabinet without raising lid and threads **\$15.75**

Walnut Finished Tables

With Walnut Veneer Tops. **\$8.95**

Sturdy Construction.

Choice of End Tables, Lamp Tables and Coffee Tables

Card Tables

Fibre Top **\$1.50**

MAGAZINE RACKS **\$2.95 & \$4.95**

Drop Leaf Ext. Table

With Metal Tots **\$69.50**

Ext. **\$79.50**

Ext.

USE OUR LAY-A-WAY PLAN WE GIVE 5¢ GREEN STAMPS

SALEM HOME FURN. CO.

137 SOUTH COMMERCIAL ST.