

### Labish Store Sold by Bells

LABISH CENTER — Mr. and Mrs. E. M. Stinson and sons of Van Nuy's, Calif., have recently purchased Bell's Store from Mrs. Frank Bell who plans to retire. Mrs. Stinson and Mrs. Robert Bises are sisters.

Mr. and Mrs. Harlan Nelson of Spokane are at the Harvey Akers on a business and pleasure trip. Building of the Labish Center Evangelical United Brethren church has been slowed temporarily pending receipt of material. The Home Economics club, (formerly Ladies Aid) meets September 24 with Mrs. Arlo Pugh for a business session. "Pressure Saucepans" will be the subject studied at the October meeting.

### Turner Student Enrolls in College

TURNER — Geraldine Edwards is enrolled at Linfield college as a freshman. Willard Bear is principal of the Newberg high school this year. Ulwin Denyer who underwent a major operation in a Portland hospital recently is improving and is now in the Newberg hospital

and expected to come home sometime this week. Mrs. John Petersen, Arlene and Lorraine were vacationing at Seaside and Aberdeen last week. Mrs. Ulwin Denyer received word this week from her sister, Mrs. Lulu Dozier Smith of the birth of her first grand child, a girl. Mr. and Mrs. Howard Prohoska and Vicki spent several days at the coast last week.

### Brush Creek School Has Twelve Pupils Enrolled

BRUSH CREEK — Mrs. Martha Isaacson completed her first week in her second year as teacher at Brush Creek school Friday with 12 pupils, three in the first grade. Beginners are Karan McCoy, Diana Mauter and Robert Dettwyler. Alice Jensen, sister of Mrs. Isaacson, is president of the Booster club and is making plans for its opening Fall meeting. The

club has been vacationing since its picnic in early July. Marquam Residents Recovering at Homes — W. P. Nicholson has been ill for the past week but is reported as improving. Mrs. Fred Lang is also reported to be improved after quite a spell of illness. Mrs. Carl Sether has been ill for the past week.

### Elfstrom Urges Safety Drive For Children

Mayor R. L. Elfstrom Saturday urged Salem citizens to make a concerted effort to educate their children who have returned to school to be careful in the home,

at play, at school and on the way home from school. Elfstrom said he was issuing his plea in cooperation with the National Safety Council's year-around campaign to take all possible precaution to reduce accidents among children. He called attention to the fact that a large percentage of accidents in the past year killed children between the ages of 4 and 15 years.

# AT PENNEY'S

Savings EVERY Day!

You don't have to search for bargains... nor sacrifice quality for low price... when you shop at Penney's. We have always kept quality up — and prices down.

Select your new

# TOPCOAT

now on LAY-AWAY

### SMOOTH FINISH GABARDINE

Season's ever popular all wool gabardine top coats in neutral tan shades in styles that spell comfort and smart appearance. Fine quality workmanship and tailoring throughout that will stand up under hard wear. Shop for them and take part in the savings.

## 39<sup>75</sup>



### 5 REASONS WHY

## Marathon

IS THE HAT BUY!

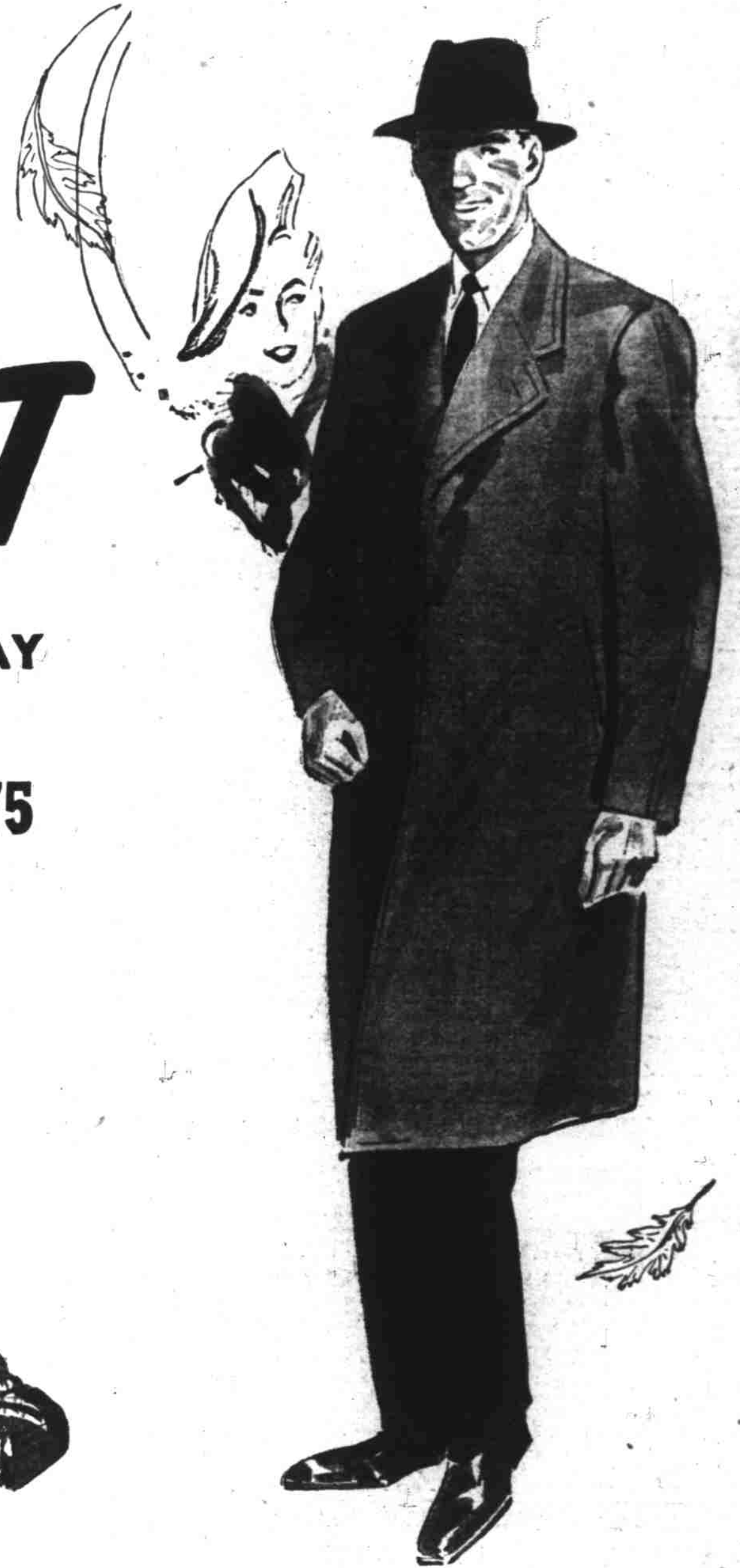
- Selected Furs
- Superb Hand Finishing
- Perfect Fit
- Stylish Colors
- Value-Packed Prices

## 4.98

## 5.90

## 6.90

Just try and beat these prices on rayon-lined, real all fur felts! Our new Fall selections are complete — the best-looking autumn shades in years! You'll find your right brim width, band, and oval shape at Penney's—NOW!



Smart Newellton Suede

### 100% Virgin Wool Topcoats

- Water Repellent •

A distinctively handsome fabric that will answer the most particular requirement of the smartly dressed man. Season's most popular styling. Set in sleeves, covered fly front, slash pockets. Colors in soft shades of brown and natural. **34.75**

### Handsome Hedeford Tweed

The topcoat that heads the fall wardrobe list for quality, smartness and expert tailoring. Practical shades of blue and brown. Tailored with that drape flare. Tweeds that offer distinct styling to please the most particular taste. **29.75**

### Fine All-Wool Students Topcoat

Back-to-college in style. All wool covert cloth topcoats, styled distinctively for young men's wear. Expert tailoring and workmanship at a price that will fit every budget. **24.75**  
Sizes 32 to 40

MAIN FLOOR