

11 Nominated To Rural Area School Board

Petitions naming 11 candidates for directors of the new Marion county rural school district board were on file Monday in the office of Mrs. Agnes Booth, county school superintendent.

Six of the candidates have filed notices of acceptance, Mrs. Booth said, and the others have until May 31 to accept or reject the nominations. Members of the board are to be elected at the annual school meetings June 16. One director will be elected in each of the county's five zones.

Petitions have been filed for the following:

Zone 1—Sylvester J. Smith, Four Corners; Ernest Andres, St. Louis; John Rasmussen, Butteville, and Albert J. Kowash, Belle Passi.

Zone 2—Herman J. Rehtus, Kelzer.

Zone 3—Margaret E. Riches, Turner; Herbert A. Miller, Roberts, and Eugene Finlay, Looney Butte.

Zone 4—Fred J. Schwab, Mt. Angel, and W. M. Tate, Monitor.

Zone 5—Walter H. Bell, Stayton.

To date acceptances have come from Andres, Rehtus, Margaret Riches, Schwab, Tate and Bell.

The new board is made up of all the country's school districts except the first-class districts. The recent Marion county budget committee approved a fund of \$1,000 for the board to pay its first-year expenses. After the first year the board's cost will be levied by it against the district.

THIS COMFORTABLE CHAIR WILL MAKE HER "FEEL LIKE A QUEEN"

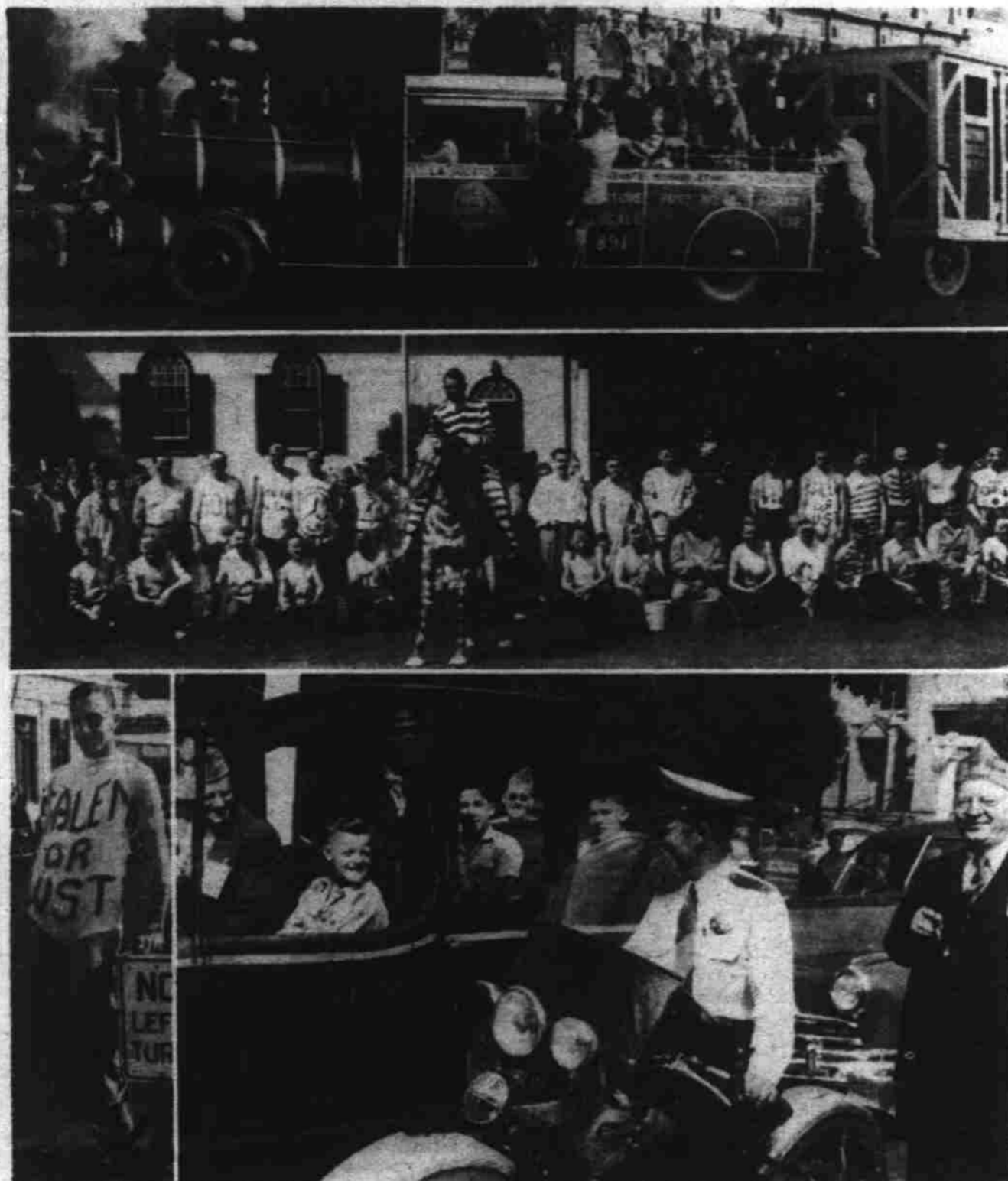
That hard-working girl in the office... she deserves the very best in "all-day working comfort".

Seat her in this wonderful chair with its adjustable back and patented "Fixed-Floating Seat". She'll be glad she works for you and her efforts will prove the wisdom of your thoughtfulness.

Cooke Stationery Co.

370 State Phone 4404 Wes Goodrich, commissioners,

40 et 8 Take Time Off For Fun Initiation



The state 40 et 8, American Legion group, engrossed most of the year in a program of aid for veterans' widows and orphans' let its hair down briefly in Salem Saturday for a bit of a good time. Top picture shows the Albany 40 et 8 locomotive and boxcar, which highlighted a colorful parade on Salem streets. Second from the top portrays the new initiates who were "put through the paces" as exemplified by Lloyd Walker of Mt. Angel in the lower picture. Next to Walker is a photo of one of the famed Marne taxis. Driving is Charles Etchele of Portland, with Tommy Zillinski next to him. Left to right in rear seat are Francis Schlageler and Richard Staudinger. The motorcycle officer is Elwood Hewett and at the edge is his brother-in-law, Charles Rich of Portland. (Statesman-McEwan photos).

Camp Skill Wins Ribbon for Troop

Salem's troop 16 of the Boy Scout Cherry City district was awarded the blue ribbon of exemplary camp and scout craft Sunday afternoon at the completion of the district camporee.

More than 200 men and boys participated in the three-day camporee, with Sam Randle and

acting as south and north side scoutmasters. Points were given for camping, cooking, knot tying and other scout skills.

Judges were Commissioners Art Lamka, Dick Alverson, Jack Sullivan, Elmer Kleinke and Ralph Demetz, and Camp Directors

Jersey Shows, Sales Planned By Cattle Club

B Lillie L. Madsen Farm Editor, The Statesman

WEST WOODBURN, May 19—Forty-five members of the Marion County Jersey Cattle club met Sunday at the Newt Davis home near West Woodburn, enjoyed a picnic, viewed the 55 head of registered Jersey cattle, inspected the new loading shed and held a business meeting at which plans for the May 26 spring show at the state fairgrounds were completed.

Floyd Bates, president, reported on plans for the first annual Jersey sale at the state fair grounds September 20. He announced that directors appointed as the selection committee for cattle to be sold:

A. W. Sweet of Sixes, I Slater, western Jersey fieldman, Andy Malar of Sandy, L. S. Lorenson of Dayton, Homer Shelby of Albany, W. E. Lottman from Washington county and George Horning from Clackamas county.

M. C. Hacker, Portland, explained the "Heifers for Relief" program and said that since its start four years ago more than 5000 heifers had been sent to China and Europe for orphanages, hospitals, relief groups and farmers unable to buy them.

Jim Bishop, 4-H leader in Marion county, was asked to continue meeting with the club even after he leaves his post to become field man for a feed and seed company.

George Horning of Clackamas county club, was a special guest and spoke briefly on the proposed Jersey train to the national show in Columbus, Ohio, in the autumn. Indications were, Horning said, that an entire Jersey train would travel from the west.

The club voted special greetings to Mrs. M. G. Gunderson, who is convalescing in the Silverton hospital from major surgery.

The June meeting will be at the J. F. Bouyerie & Son Jersey ranch, also in the West Woodburn area.

Time Since 1946 Not In Eligibility Record

Persons who served in the armed forces prior to December 31, 1946, are war veterans entitled to benefits under the state aid educational act but time ac-

Clark Lethin and Lou Amort. Explorer troop members acted as referees and directors of the camping event.

culated after that date may not be applied toward eligibility for veterans' benefits, Attorney General George Neuner held Monday. The opinion was requested by George E. Sandy, director of the state department of veterans affairs.

35-Year Salem Resident Dies

Rose Mary Bronchushio, 88, a native of Italy and a Salem resident for 35 years, died Sunday at her home, 259 Strand ave. She was the widow of the late George Bronchushio.

The funeral will be at 2 o'clock Wednesday afternoon at Clough-Barrick chapel with the Rev. H. W. Barnett officiating. Interment will follow at City View cemetery.

Surviving are two daughters,

Mrs. Maybelle Purvine of Salem and Mrs. Anna Wood of Flan-dreau, S. D.; three sons, John M. Raymond of Van Nuys, Calif., Charles of Long Beach, Calif., and Donald Raymond of Spokane, Wash.; two brothers, Rocky Fanelle of Sioux Falls, S. D., and Charles Fanelle of Wichita Falls, S. D.; five grandchildren and three great-grandchildren.

ICE CREAM
Quarts . 33¢
SAVING CENTER
Salem & West Salem

Useful Items You Can Make...

- LAWN CHAIR
- BIRDHOUSE
- MAGAZINE RACK
- EXPRESS WAGON

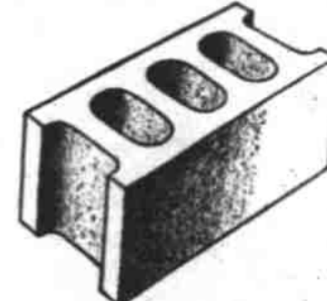
IT'S SIMPLE WITH
Easy-Built Patterns

- Trace on wood
- Saw & Assemble
- Add a coat of paint

25¢ up

Above are just a few of the many handy items easily made by the pattern method; selection includes, toys, furniture, even a one-car garage! Smooth-flowing, colorful, lasting paints for any and all of these will be found in our Paint Department.

At Keith Browns' Lumber Division
Firesafe, Economical — For Every Building Purpose



Smithwick
CONCRETE
or
PUMICE
BLOCKS

Adaptable to homes and business buildings, basements, foundations, retaining walls, farm buildings; new construction or repair. Easily insulated, economical, sanitary, fireproof.

Roofing—
Shingles, pre-stained or plain, No. 1, 2 and 3
90-lb. Mineral Surface Roofing
105-lb. Staggered Edge Roofing

KEITH BROWN
LUMBER ● **YARD**

Front and Court Sts. Phone 9163
Lumber - Millwork - Glazing - Hardware - Paints

FIRST

INTERFLEET TRAFFIC SAFETY CONTEST
GRAND AWARD

OREGON MOTOR STAGES
1947

Presented by
CITY OF PORTLAND
TRAFFIC SAFETY COMMISSION

in Safety!

When you ride Green-Liners you ride safely. The big, comfortable and safe Green-Liners are piloted by skilled operators who are proud of the safety record they have maintained. This year, they won the Grand Award as well as first place, in fleet safety competition.

Ride Safe, On-Time
Green-Liners



Oregon Motor Stages
The Greenliner Line

DARIGOLD
PURE VITAMIN D₃ INCREASED

SEAL OF
DARIGOLD
GUARANTEED
Quality

HOMOGENIZED
EVAPORATED MILK

DARIGOLD