



Hadden

How well Hadden puts over the fine points of this rayon and wool gabardine! The sleeves have a graceful air, the shirt a graceful swing and the colors are beautiful

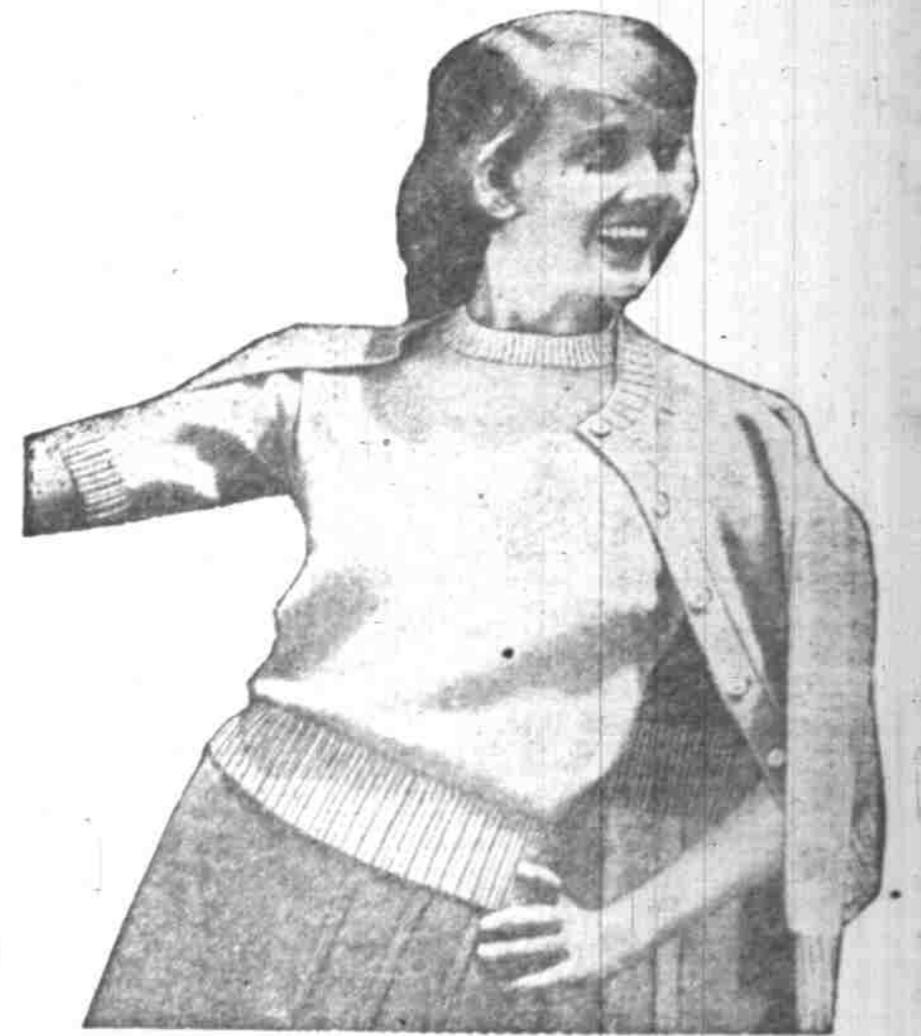
19.95



Petti

Slick lumberjack twosome . . . of startling window-pane check . . . Sports drop shoulders . . . contrasting belt . . . straight shirt. Brown or royal blue on white. Sizes 9-15

16.95



Ladyarn

Yes—they are the sweater of all sweaters. Hand fashioned sleeves made of long fibered wool that is like velvet to touch. Long or short sleeve cardigans. Sizes 34-40

9.95 & 10.95

YOUR CASUALS

... A parade of the famous names of "Who's Who" . . . in casual wear . . . Joyce . . . Petti . . . Hadden . . . Illing . . . Ladyarn . . . are but a few . . . You've seen them featured in the fashion magazines . . . Now . . . meet them in person at LEONS . . .



MASH HIT

... of black Bucko . . . a mudded calfskin . . . the sole is ultra-flexible . . .

9.95



OAXACA
joyce
CALIFORNIA

Joyce's version of that deep south comfort casual . . . featured in white box glove.

6.95

BUCHLER SABOT
joyce
CALIFORNIA



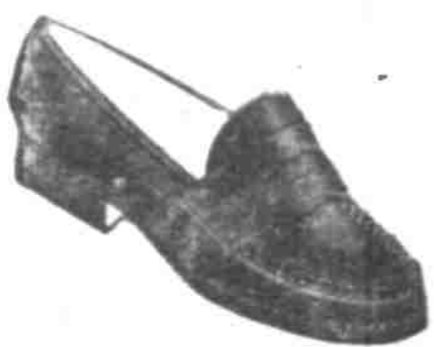
It's Joyce again . . . this tailored casual featured in black gabardine. Sizes are to 10's AAA to B widths.

6.95

Illing
of California

"Puck"—Soft "draped toe" casual with loads of "fun" for wear appeal. Gold rush leather.

8.95



Trampeze Loafer . . . genuine hand stained, giving that handsome "Backwoods" look . . .

6.95



Early Autumn finds you chic and charming in Hadden's wool jersey with those push up sleeves . . .

24.95

Hadden



Let's go to
LEONS

234 No. Liberty
in
Salem