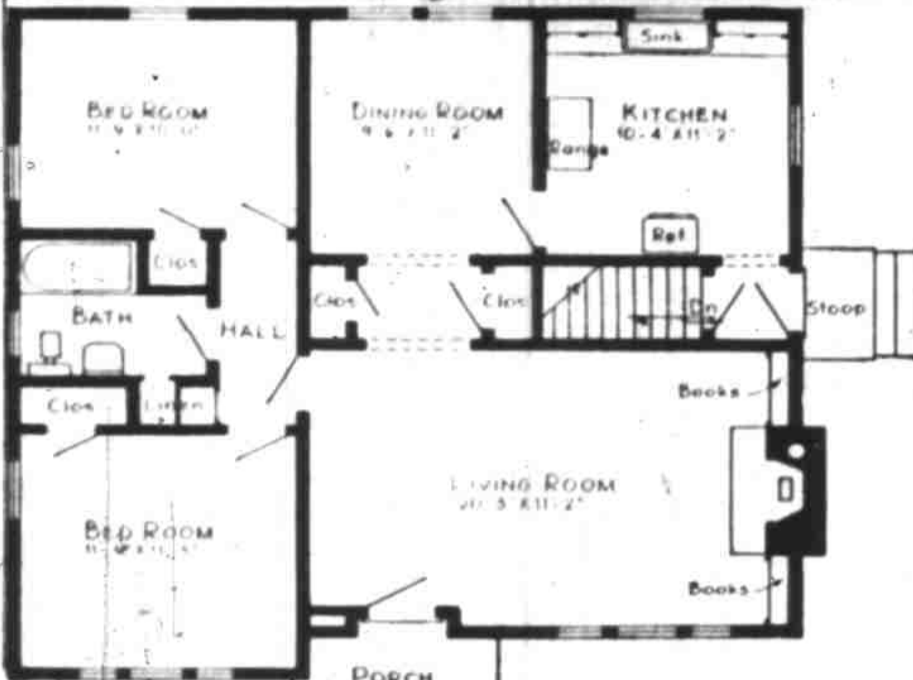


HOMES FOR AMERICANS



FLOOR PLAN

Plan HJ-102, American Building, 105 West Adams St., Chicago 3) AP Newfeatures

Banks of windows in living room and front bedroom, full sized dining room and white outer wall contrasting with green asphalt shingles help make this house appealing. Estimated cost of \$7,000 for most localities exclusive of land makes it suitable for moderate incomes.

Today's Pattern



Well, well, this little cherub sure looks proud about something. Bet it's that cute button-fronter she's wearing! Pattern 4612 has a party dress, too. Panties included.

This pattern, easy to use, simple to sew, is tested for fit. Includes complete illustrated instructions.

Pattern 4612 comes in sizes 2, 4, 6, 8. Size 6 takes 1 1/2 yards 35-inch, 1/4 yard contrast.

Send TWENTY-FIVE cents in coins for this pattern to The Oregon Statesman, Attn: Adams, 16 First St., San Francisco 5, Calif. Print plainly NAME, ADDRESS, ZONE, SIZE AND STYLE NUMBER.

Just out—the new Anne Adams Fall and Winter 1946-47 Pattern Book! Send fifteen cents more for your copy now! It will bring you fashion for the whole family... plus a FREE pattern for girls' hat and bag set printed right in book.

More Conservation Needed on Marion County Farms, Tate

Better care of Marion county's agricultural resources, which this year are producing more than \$10,000,000 worth of food and feed crops, is viewed as "an absolute necessity" by W. M. Tate, chairman of the county agricultural conservation association.

"If we are to continue to produce on this scale we must take steps now to check soil erosion and depletion that is still taking place on too many Marion county acres," Tate declared. "Despite the conservation accomplishments and better farming methods of the past few years, we still are on the red side of the conservation ledger." Funds are available through the agricultural conservation program to assist with additional conservation work on county farms and the county ACA committee is encouraging farmers to apply for approval of extra conservation work this fall. Fall practices include liming, application of super phosphate, tilling, and seeding of permanent pastures.



GOT A CORPSE TO HIDE?

"LET GEORGE DO IT" It's a thrilling new comedy drama—on the air TONIGHT

8 PM - KSLM - 1390

Hops Cleaner Yield Smaller Says Walker

The 1946 hop yield was surpassed by the crop of a year ago, although growers were successful in their drive to get cleaner hops this year. The set of hops this year was at least 15 to 20 per cent below that of a year ago, R. M. Walker, chairman of the Independence hop growers association, was a shortage of pickers through-out.

Another contributing factor in the shortened yield, Walker says, is that most of the season which prolonged picking and resulted in

lower grade hops with some mold and mildew damage. Walker sets the loss of hops in the Independence area as a result of the dearth of pickers at 7 to 10 per cent of the total yield.

Most of the yards in the Willamette valley started picking with full crews in August, but pickers became dissatisfied with picking conditions generally and left in large numbers. Growers never did pick again with full crews despite a wage advance of one-half cent per pound. Most of the labor difficulty stemmed from growers' demands for cleaner hops—the exclusion of stems and leaves which detract from the marketability of the hops.

Walker cites an example of the prolonged season in one of the yards he operates. This year it took 38 days to complete picking

No 1947 Letdown In Farm Acreage Seen for Oregon

Continued maximum farm production is in prospect for Oregon, says E. L. Potter, chief of the division of agricultural economics, OSC.

Prices of most farm products are still high enough to encourage

as compared with 28 days in 1945. The shortage of pickers and the fact that workers seemed unwilling to do a full day's work caused the lag, he added.

This past week small acreages in many sections of the valley have been abandoned as a result of mold and mildew damages.

large production even though the general outlook is for gradually lower farm income. The acute labor shortage has been particularly relieved and while machinery will continue to be scarce, its chief effect is expected to be on hay production. The freight car shortage may delay movement of feed grains into the state and other products out.

Taking individual crops, Potter forecasts a decrease in potatoes, a slight decrease in total acreage of grain crops and a reduction in flax for fiber. Increases are foreseen in summer fallow acreage, truck crops for processing, and sod crops including a big increase in alfalfa clover for seed in response to demand. Hairy vetch and winter peas are expected to increase significantly.

Sheep Faw Dairy cattle numbers may stay

at present levels with an improved feed-milk price ration while beef cattle numbers are likely to decline somewhat. Sheep numbers are low and a gradual upturn is considered desirable. Hog numbers probably will not reach pre-war levels for some time because of less skim milk available and world demand for wheat as human food.

An unfavorable egg ratio is expected further to reduce egg output while commercial broiler production may continue its upward trend. Some recovery in turkey numbers is expected from this season's drastic slump.

TOURISTS FLOCK TO DAM
PORTLAND, Oct. 10 (AP)—Fortune dam had nearly half a million visitors in the first nine months of this year, 140,157 of them in August alone.

FIRMS SEEK HOUSING
PORTLAND, Oct. 10 (AP)—Fifty logging and lumber companies were negotiating today for 780 dwelling units offered for sale by the federal public housing authority. This was the first time that surplus war housing was made available to private firms.

How To Hold FALSE TEETH —More Firmly In Place

Do your false teeth annoy and embarrass by slipping, dropping or wobbling when you eat, laugh or talk? Just sprinkle a little FASTEETH on your plates. This alkaline (non-acid) powder holds false teeth more firmly and more comfortably. No gummy, sticky, starchy taste or feeling. Does not sour. Checks "plate odor" (denture breath). Get FASTEETH today at any drug store.



GENUINE All-White FLOUR is HERE!

Now!



GOLD MEDAL PILLSBURY and DRIFTED SNOW

Like old friends, these and other famous enriched flours will greet you at Safeway. Now you can bake your proudest cakes again... to your heart's content.

- 5 lb. sack 37¢
- 10 lb. sack 71¢
- 25 lb. sack \$1.65
- 50 lb. sack \$3.29

What we mean is that it's here now... in abundance! Carlot shipments assure all who have been waiting for the return of these all-white ENRICHED flours of an ample supply. But if YOU have been waiting... so have many others. Therefore... a word to the wise... get yours THIS week!

Spaghetti with Mushrooms
Conan's—Special low price 2/25¢ pint jar

Mushrooms in Gravy
Shady Oak brand 10-oz. jar 25¢

Beef Extract
B. V. brand 2 1/2-oz. jar 27¢

Ice Cream Mix
Frizz brand 3 1/2-oz. pkg. 25¢

Cereals
QUAKER Quick Cooking 20-oz. 13¢
QUAKER Reg. or Quick 3-lb. 29¢
HOT CEREAL 18-oz. 21¢
FISHER'S HOT CEREAL 20-oz. 20¢
7-oz. 13¢

Coffees
Airway Whole Bean Coffee 1-lb. bag 30¢
Nob Hill Whole Bean Coffee 1-lb. bag 33¢ 2-lb. bag 65¢
Edwards Coffee 3 Grinds 1-lb. jar 39¢

While They Last! 'EMERGENCY' FLOURS AT LOWERED PRICES!

- 50 lb. sack \$2.75
- 25 lb. sack \$1.38
- 5 lb. sack 30¢
- 10 lb. sack 59¢

Many home-makers have learned to like the emergency type flour for the old-fashioned flavor it imparts to baked goods. For those and others who seek real old-fashioned bargains, an ample but dwindling supply is offered at these bargain prices. Or, if you prefer, get a sack of each, the all-white and the "emergency," and you'll still have EXTRA money!

Your choice of these Quality brands: Golden Heart, All American, Great Western, Fisher's, Home-like or Pillsbury Emergency

Be wise—Stock up!

TYPICAL SAFEGWAY MEAT VALUES

Grade A Hen TURKEYS

Buy a whole bird or choose the pieces you like!

- WHOLE—lb. 59¢
- Breast, Legs or Thighs—lb. 95¢
- Necks, Wings or Backs—lb. 63¢

Eviscerated Chickens

- Colored Fryers Cut up lb. 89¢
- Fowl Roasters Cut up lb. 79¢ Whole lb. 89¢

Fresh Oysters
Medium Sizes Pint 75¢

Fillet of Sole
Dover brand FRESH lb. 45¢

HALIBUT
Sliced lb. 49¢

Pure PORK Sausage
Type 1 Country Style lb. 39¢

Meat features for Friday and Saturday.

Kemp's NUTS
Vacuum packed in tins
Salted Peanuts 8-oz. 27¢
Mixed Nuts 7-oz. 49¢
Cashews, Almonds 7-oz. 75¢

MATCHES
Favorite brand Carton of 6 boxes 21¢
Book Matches 2 cartons 25¢

TOBACCO
Prince Albert Buy a pound can and Save! lb. can 77¢

Miscellaneous

- Ry Krisp Wafers Nestle 12-oz. 26¢
- Flat Bread Peterson's 13-oz. pkg. 33¢
- Graham Crackers HONEY MAID lb. 22¢
- Chicken Soup Rancho can 16¢
- Mushroom Soup Ostrum can 15¢
- Minced Clams Snow's 8 1/2-oz. can 33¢
- Hamburger Relish MALLET'S 8-oz. jar 25¢
- Sweet Relish SWENBERT-CANDIED 8-oz. jar 22¢

Baby Foods

- Dry Cereal Heinz brand 8-oz. pkg. 15¢
- Cereal Clapp's Instant Oatmeal and Dry 8-oz. pkg. 15¢
- Baby Foods Gerber's strained or Chopped tin 7¢
- Baby Foods Clapp's strained tin 7¢
- Baby Foods Clapp's chopped tin 8¢
- Baby Foods Heinz strained tin 7¢
- Baby Foods Heinz chopped tin 9¢

G. E. Light Globes 60 w. 12¢ 100 w. 16¢ (Tax included)

White Magic BLEACH 1/2-gal. bot. 17¢

Canned Peas

- Tender Peas GARDEN-SIDE No. 2 14¢ can
- Tender Peas HIGHWAY 4-Sieve No. 2 16¢ can
- Fancy Peas SUGAR BELLE 2-3-4 Sieve No. 2 20¢ can
- Fancy Peas LIBBY No. 2 17¢ can

Canned Fruits & Juices

- Apricot Halves HIGHWAY No. 2 1/2 27¢
- Whole Apricots UNPEELED 2 1/4 21¢
- C&M Prunes DRIED AND No. 303 17¢
- Grapefruit Carlton No. 29¢ Broken Segments 27¢
- Grapefruit Juice Town No. 2 14¢ 46 33¢
- Grapefruit Juice House can 13¢ 46 29¢
- Grapefruit Juice Blend No. 2 18¢ 46 39¢
- Blended Juice Dr. Phillips No. 2 can 20¢
- Orange Juice Full of Gold No. 2 can 22¢

Vegetables are pretty... look before you eat

Colorful fall produce lends itself to decoration as well as to menus. Use the choicest fruits and vegetables from your trip to the store for centerpiece for table, mantelpiece, buffet, or shelf before you eat them. Be sure they are firm, but not quite ripe. Wipe off the fruits and vegetables, shine them, but do not wash.

Try this centerpiece of onions, apples, wheat or dry grass and autumn leaves. The candleholders are apples hollowed out so the candles will fit, set on autumn leaves. Insert tufts of wheat in with the candles.

Here fruit is arranged in a split Hubbard squash. Ivy leaves (or other green leaves) are placed around the arrangement. On each side are Danish squash candleholders.

Out of a floppy garden hat spill onions, yellow and red, carrots, squash, cucumbers, and eggplant.

Carol Drake, Director
The Homemakers' Bureau
An Extra Safeway Service

Planning a Shower for a Blessed Event?
Carol Drake has prepared three new leaflets entitled GIVING A BABY SHOWER, THEMES AND GAMES FOR BABY SHOWERS, and MENUS FOR BABY SHOWERS that will give you ideas galore. Address your request to Carol Drake, The Homemakers' Bureau, Box 2110, Dept. 8, San Francisco 26, Calif.

Extra Rich! Fine Flavor!

GOLD LABEL VANILLA AND CHOCOLATE

ICE CREAM

Log Roll QT. 35¢
Rolled in Nuts

Gold Seal Vanilla and Vanilla with Black Walnut

Ice Cream QT. 35¢

FIFTH AVENUE ICE CREAM Assorted Flavors QT. 29¢

- 100% Pasteurized
- Packed Free in Frostaire to Hold 1 to 3 Hours

WE Are Happy to Fill QUANTITY ORDERS for ICE CREAM

Fred Meyer FOR Thrifty BUYERS
148 N. Liberty

FLAVOR-PERFECT PRODUCE

Flavor and freshness go hand-in-hand. Safeway guaranteed fresh fruits and vegetables, assure perfect flavor.

Extra Fancy and Fancy APPLES

- Red Delicious Jonathans 9¢ 42-lb. box \$2.69
- Jonathans 7¢ Box \$2.49

Salad Vegetables
Mixed for salads. In sanitary cello packages. 8-oz. pkg. 12¢

Tokay Grapes Sweet, lb. 14 1/2¢
Crispy Local Crop lb. 18¢

Broccoli Local Crop lb. 18¢

Cauliflower snowy white lb. 15¢

Cabbage Local Crop lb. 4¢

Corn Golden Bantam lb. 11¢

Yams From the South lb. 9 1/2¢

Danish Squash lb. 3 1/2¢

Turnips Clip Tops lb. 8¢

Crispy Celery Local crop Pascal Variety lb. 5 1/2¢

POTATOES Grown in the Northwest. 10 lbs. 37¢
U. S. No. 1, 100-lb. sk. \$2.89

Dry Onions A truly inexpensive dish Lb. 2 1/2¢ 50-lb. sack 98¢

Produce features are for Friday and Saturday only.

SAFEGWAY