

International Show All Set For Opening

By Lillie L. Madson
Farm Editor, The Statesman

Under the supervision of the new manager, Walter A. Holt, and the board of directors headed by T. B. Wilcox, Jr., the Pacific International show plant at Portland has gone through its reconversion from wartime uses to its original purpose—that of livestock and land products exposition. The doors for the 36th such show will swing open Saturday, October 5, for an eight-day run that is expected to record some 175,000 in attendance.

One new feature of the exposition this year is the northwest barley show. Barley has been exhibited here for years, but not as brewing barley competing for awards of \$250, besides the \$200 award in each of three states.

Ceilings to Be Lifted

Interesting in fat stock exhibitors is the announcement that the OPA price ceilings will be lifted on show animals put on the auction block. Auction sale of fat stock is a principal inducement to exhibitors in this department and will be held late in the week.

To the familiar features of the junior show has been added the new calf scramble event which will highlight each horse show. Thirteen times during the week, young steers will be turned loose in the ring with 14 Four-H club boys, each armed only with a rope halter, out to make a catch-for-keeps. Five "society" and five rodeo events complete each horse show.

Fund Goes 'Over Top'

Good news to the hundreds who knew the late O. M. Plummer, manager of the PI from its beginning in 1910, will be the announcement that before the show opens the O. M. Plummer Memorial Scholarship fund will exceed \$10,000, which was its first objective.

The cattle breeding division, under the direction of Frank R. Riches of Buena, Wash., formerly of Marion county, will compete for \$2500. Judges will be: Short-horn and Miking Short-horn, M. E. Keszinger, Pullman; Herefords, A. W. Harris, Harris, Mo.; Aberdeen-Angus, C. W. Hickman, Moscow, Idaho.

Dairy breeds are under Ivan Loughary, Seattle, formerly of

Polk county, and Jerseys are to be judged by G. E. Gordon, Berkeley; Guernseys by D. L. Faurt, Moscow; Ayrshires and Brown Swiss by M. B. Nichols, Pullman. \$7221 Set for Prizes

Of the sheep division, which calls for prize money of \$7221, D. M. Nelson, Corvallis, is superintendent, and judges are V. O. McWhorter, Yakima, and E. F. Ripehart, Boise. The hog division, under the superintendency of A. W. Oliver, Corvallis, will be judged by E. H. Hughes of Davis, Calif.; Angora goats, by Ronald Hogg, Salem, and milk goats by Peter J. Hilliland, Portland.

Four breed selections of draft horses have been listed with H. A. Lindgren as superintendent, and D. E. Richards, Prairie City, judge. C. E. Grelle has charge of the wool show. Lincoln Wheeler will look after the land products; H. M. Brown, the poultry and rabbits, and Lyle Hammack the dairy products show. Verne Elliott returns to direct the rodeo and Revel L. English, the night horse show.

Pastor at Woodburn Named Scoutmaster

The Rev. George H. Richardson, pastor of the Woodburn First Christian church, will be scoutmaster of a new Woodburn boy scout troop formed this week. Martin Mockford, Salem, assistant scout executive, announced Thursday. The new troop, No. 60, will be included in the Silver Falls district of Cascades Area council.

Mockford visited with the American Legion post at Aurora last night discussing plans to form a new troop there.



"LET GEORGE DO IT"

Follow George's adventures in radio's newest, fast-moving, comedy drama TONIGHT

8 PM - KSLM - 1390



"JUST LOOK AT OUR BEAUTIFUL NEW KITCHEN! . . ."

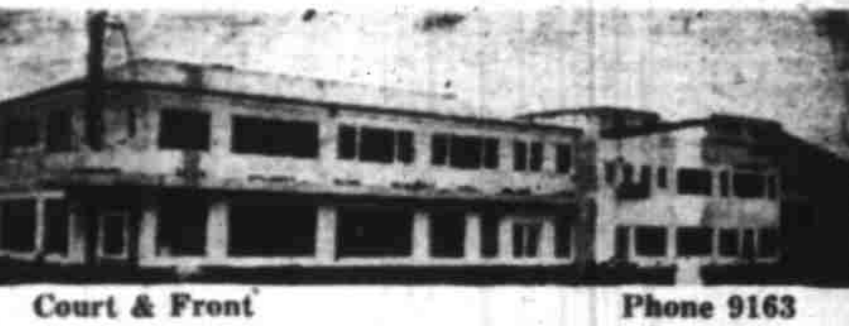
It looks so smart and streamlined now - thanks to our modern "Brownwood" kitchen cabinets from Keith Brown!

Yes, our handsome "Brownwood" kitchen cabinets are spacious, neatly planned and compact! . . . Why not come on in today and look 'em over!

While They Last, Extra Special

1 Lot of various sizes in **75¢ to \$1.00** Ea. Cupboard Doors.

KEITH BROWN



Court & Front

Phone 9163

Potato Pickers Wanted

Potato digging will start in earnest in Klamath Basin October 1st and will continue at this rate for thirty days. Pickers are badly needed.

Picking rate is 5¢ per 60 pounds, with special upward adjustments in poor fields. Other labor is \$1.25 per hour. Camping equipment with bedding is usually needed. In most cases tents will be furnished.

Workers should register at the Farm Labor Office, 116 South Sixth Street, Klamath Falls

PENNEY'S

J. C. PENNEY CO., INC.



Sculptured figures

at Streamlined Prices!

COATS . . .

Pure wool coats in long fitted, short fitted or loose-swinging styles. Gabardine, suedes, coverts, twills and fleeces. Some tie waist with gentle front fullness.

34.75

SUITS . . .

So suavely styled and fitted they melt to your figure. All wool gabardine, twills and suede cloth tailored and detailed to look twice their price. All the good colors.

21.00 to 44.50

DRESSES . . .

Curves are it this season—but take a straight course to Penny's for a price like this on such handsome versions. Rich rayon crepes . . . in black . . . in colors. Some with "glitten" as well as "drape." **7.90 to 12.75**



SECOND FLOOR