

FISHER STRIKE FADES
ASTORIA, Ore., April 17-(AP)—Threat of a fishermen's strike on the Columbia river when the sea-

son opens May 1 faded with announcement that negotiations for a 25 per cent price increase will continue until June 30.

SYRIA EVACUATED
DAMASCUS, April 17-(AP)—All foreign soldiers had left Syrian soil yesterday under an evacua-

tion completed last midnight. Britain and France, whose troops were the only foreign soldiers in Syria, early last month reached

an agreement covering the withdrawal. Selected hymns were stowed

away along with first-aid kits, and rations on lifeboats and rafts in the merchant marine of the United States in World War II.

The nation's transit systems employ more than 242,000 people to operate and maintain their street cars, subways, trackless

trolley coaches, and gas buses. It takes 1250 gallons of water to brew a keg of beer.



**Fashionably Yours,
VIRGINIA
CHARMODE**

Glamorous personification of this famous name in fine corsetry, Miss Charmode presents an octet of fashion news.

in Vogue with Charmode

Ease • Comfort • and • Silhouette •

Charmode

Fashion's Secret Support Yourself

6⁴⁹

Fine rayon satin with firm satin lastex panels . . . up and down stretch back and cross-stretch side panels. Talon "zip." Sizes 26-34.

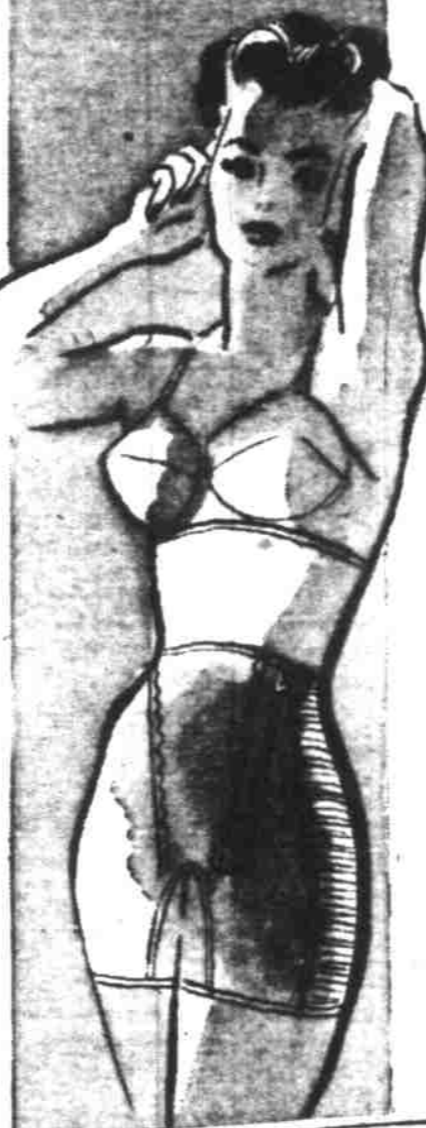


Charmode

Panty Comfort Curve Control

5⁹⁸

Girdle control with panty freedom, for fuller figures. Rayon and cotton satin with knit elastic side panels. Front boning. Sizes 26-36.



Charmode

Famous Nu-Back Won't Ride Up

4⁹⁸

Well boned tearose batiste with elastic panels and gores. Divided lace bust gives youthful contour. Hook and eye closing. 24 to 44.

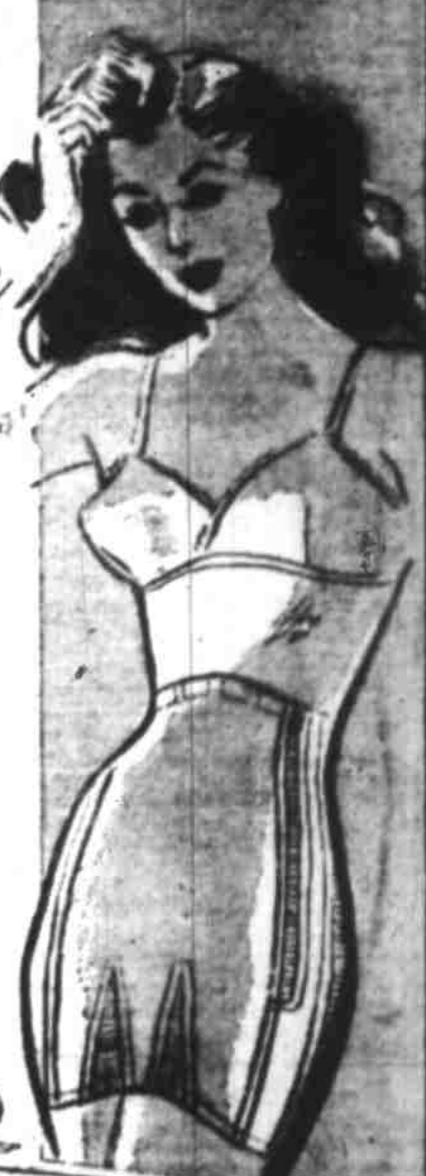


Charmode

The Silhouette Of Significance

7⁹⁸

Rich nylon with elastic side panels and front gore. Lightly boned front for a smooth, unbroken silhouette. 26 to 32.



For Beauty and Economy It's Charmode from Sears

Charmode

Restraint For Wayward Curves

5⁹⁸

Lightweight satin and elastic girdle, stitched in proper places to assure perfect fit. Talon closing 25 1/2" length. Nude color.

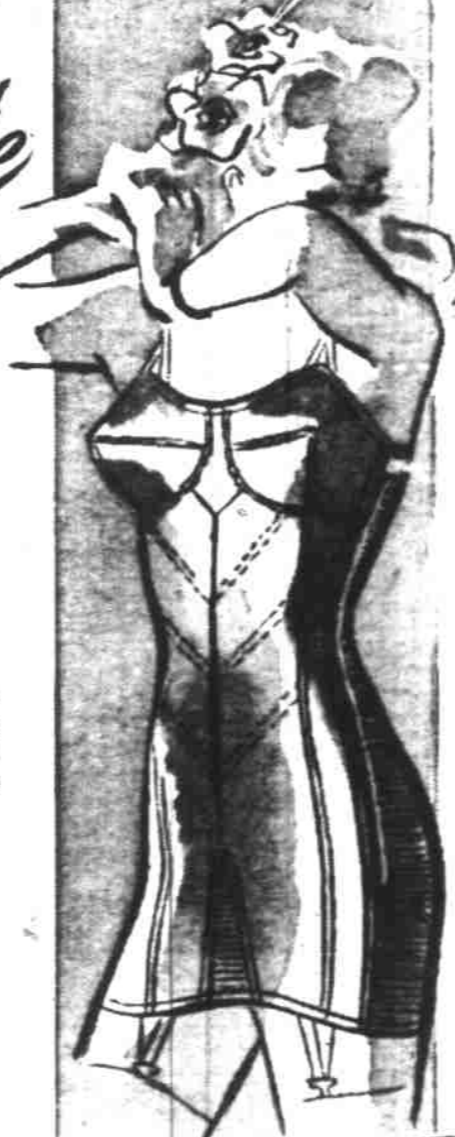


Charmode

Fashion Follows A Longer Line

7⁹⁸

Feel like a new woman in this rayon and satin elastic all-in-one that smoothes, controls and beautifies. Semi-uptift. Sizes 34-42.



Charmode

Make The Most Of Your Beauty

3⁹⁸

Two-way stretch comfort and control. An all-elastic panty with detachable garters. Cotton knit crotch. Small, medium, large sizes.



Charmode

To Glorify Your Youthful Lines

3⁹⁸

The lightweight, all elastic, two-way stretch. Four elastic garters. Small, medium, and large. Nude color.



Corsetry by
SEARS



Be Confident - Buy Charmode

Only proper fitting permits a foundation garment to give you the added comfort, healthful support and flattering lines for which it was designed and tailored. At Sears, you'll find trained corsetiers waiting to give you personal service.

Charmode Famous Name In Fine Corsetry:
Say It When You Want Quality . . .
Remember It When You Want Savings

484 STATE ST., SALEM

"Satisfaction guaranteed or your money back"

