

## Stocks Gain With News of Soviet Entry

NEW YORK, Aug. 9. (AP)—Wall Street interpreted Russia's entry into the Pacific war as bullish today and stock market prices rose fractions to more than four points with about half the sharp gains tacked on in a last minute rally.

Of 952 issues dealt in, 684 advanced, 144 declined and 124 were unchanged. The Associated Press 60 stock composite rose 1.3 points to 65.3.

Higher were U. S. Steel, Youngstown Sheet, Chrysler, General Motors, Goodrich, U. S. Rubber, Sears Roebuck, Caterpillar Tractor, Douglas Aircraft, American Airlines, Western Union "A", American Smelting, Westinghouse, U. S. Gypsum, Southern Pacific, Radio Corp., Studebaker and International Telephone.

Vanadium Corp. advanced to a new 1945 high of 31½ on a ½-point rise. It was the third consecutive peak. The concern makes uranium used in atomic bombs.

Bonds dipped and then recovered substantially with secondary rails in the fore.

## Man Looks for Janitor on Top Of Wire, Jailed

SEATTLE, Aug. 9. (AP)—Police patrolman E. R. Mills said he looked up today and saw a man balancing precariously on two power wires suspended 10 feet above an alley.

"I asked him what he was doing and he said he was looking for the janitor," Mills reported.

The man was jailed on a charge of drunkenness.

## Salem Market Quotations

The prices below supplied by a local grocer are indicative of the daily market prices paid to growers by Salem buyers but are not guaranteed by The Statesman.

**BUTTER, EGGS AND POULTRY**  
(Subject to change without notice)

BUTTERFAT	
No. 1	54
No. 2	53
BUTTER PRINTS	
A	46
B	45
EGGS	
Extra large	42
Mediums	41
Standards	40
Pullets	38
POULTRY	
No. 1 colored hens	37
No. 2 colored hens	36
Colored fry	31
LIVESTOCK (By Valley Pack)	
Spring lambs	11½
Yearling lambs	7½ to 8½
Ewes	4½
Cows, boners and cutters	64 to 66
Cows, common	60 to 65
Cows, top dairy	67 to 68
Cow, beef type	69 to 71
Bulls	7 to 11

## For Sale! 100 Head Registered Hampshire Ewes

18 mos. old. Picked from the best flock in Oregon. All sheep have ear tap and registration papers on them.

Phone or Write  
**J. C. Harrison**  
Bly, Ore.

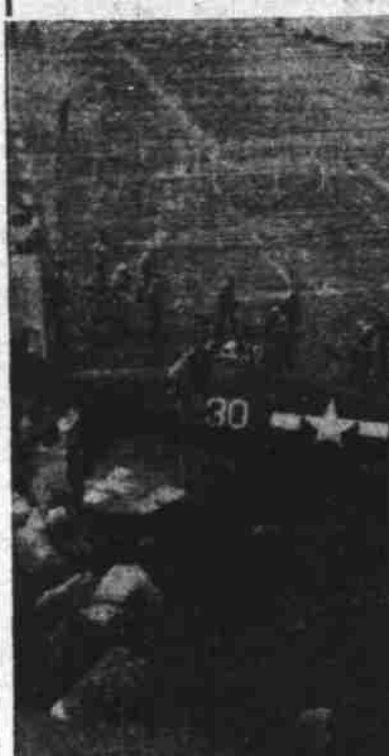
## Notice Hop Pickers

Busses Will Pick Up in Salem for  
**Williams and Thacker's Eola Hop Yard**  
Beginning at 6 A. M.

AT  
CENTER AND COMMERCIAL  
COMMERCIAL AND DIVISION  
COMMERCIAL AND MARKET  
COMMERCIAL AND JEFFERSON  
COMMERCIAL AND COLUMBIA  
COLUMBIA AND BROADWAY  
BROADWAY AND HOOD  
HOOD AND FAIRGROUNDS ROAD  
FAIRGROUNDS ROAD AND JEFFERSON  
FAIRGROUNDS ROAD AND HUNT  
CAPITOL AND HOOD  
CAPITOL AND CENTER  
20TH AND CENTER  
17TH AND CENTER  
14TH AND CENTER  
COTTAGE AND CENTER  
WEST SALEM, FOOT OF BRIDGE  
SLOPER'S STORE  
CITY HALL

Watch Papers for Opening Date

## WAR BONDS in Action



Official U. S. Navy Photo  
Plane handlers and pilot of damaged Navy Grumman Hellcat following crash landing on carrier. War Bonds helped pay for parts needed to replace those shot away by Jap flak. U. S. Treasury Department

## Quotations at Portland

### Portland Produce

PORTLAND, Ore., Aug. 9. (AP)—Butter: A grade prints 45½-46½; B grade prints 45½-46½; C grade prints 45½-46½.

Butterfat—First quality, maximum of 9 of 1 per cent acidity, delivered in Portland 52-53½; premium quality maximum of 25 of 1 per cent acidity 53-54½; valley routes and country points 2 less than first or 50-51½.

Eggs—Selling price to Portland retailers: Oregon triplets 30½; loaf 30½; triplets to wholesalers 27½; loaf 26½; to retailers: AA extra large 57½; A extra large 55½; A large 53½; A medium 48½; small (pullet) 42-43½ dozen.

Live poultry—Buying prices from producers: Broilers up to 2 lbs. 31½; roasters over 2½ lbs. 31½; Leghorns 28½; colored hens all weights 27½; old roosters and stags 23½ lb. Rabbits—Government ceiling: Average country killed to retailers 44½; live price to producers 22-24½ lb. Turkeys—Government takes supply, market nominal.

Onions—Oregon: Dry No. 1, 2.85 No. 2, 2.50; Texas 3.90; coarsella wax 3.50; red 3.25; yellow 3.25; green 1.05-1.10 doz. bunches.

Country meats—Rollback price to retailers: Country killed hogs, best butchers, 120-140 lbs. 19-19½; vealers 18-18½; country hams 14-14½; culls 12-15½; beef AA 21½; A 20½; B 18½; C 16½; canner-cutters cows 13½-14½; bulls canner-cutters 14-14½; lambs AA 24½; A 24½; C 10-20; ewes FS 13½; A 12; B 10½.

Casaca bark—Dry stock 37½ lb. Mohair—1942, 12-month 45c lb. Hay—Wholesale prices nominal: Alfalfa 1.50; clover 1.50; vetch 24-25; valley points; timothy (eastern Oregon) 35-36; clover 22 lb.

Portland Grain

PORTLAND, Ore., Aug. 9. (AP)—Wheat futures and cash grain unquoted.

Cash wheat (bid): Soft white 1.49; soft white (excluding Rex) 1.50; white club 1.51; western red 1.51.

Hard red winter: Ordinary 1.47½; 10 per cent 1.50½; 11 per cent 1.57; 12 per cent 1.57.

Hard white: 10 per cent 1.54; 11 per cent 1.57; 12 per cent 1.63.

Today's car receipts: Wheat 89, barley 5, flour 5, corn 6, oats 1, millfeed 8.

### Portland Livestock

PORTLAND, Ore., Aug. 9. (AP)—(WFA) No. 1 Salable cattle, total 290; calves 75; market active, steady; common-medium grass steers largely 12-14½; cutters down to 10.00; common-medium heifers 10.00-12.50; odd head to 14.25; canner and cutter cows 7.00-8.00; shells down to 6.00; fat dairy type cows 10.00-30; medium-good beef cows 11.00-12.25; part load good young cows 13.00; medium sound young 13.50-14.25; good heifers 14.00-15.00; sizeable lot 345 lb. calves 14.00.

Salable hogs 50, total 225; market active, steady; barrows and gilts 13.75; sows 15.00; good stags with 70 lb. dock; no feeder pigs offered.

Salable sheep 450, total 750; market

## Grain Futures Fairly Steady; Buying Heavy

CHICAGO, Aug. 9. (AP)—Cash grain buying by the commodity credit corporation resulted in a fairly steady grain futures market today, regardless of bearish war news. Russia's entry into the war against Japan depressed all markets fractionally at the opening but buying attributed to south-west interests said to be against sales of hard winter wheat to the CCC, steadied wheat and other grains followed its lead.

At the close wheat was ¼ higher to ¼ lower than yesterday's close, September 1.65¼-¼. Corn was ¼ to ¼ lower, December 1.16¼. Oats were ¼ to 1 cent lower, September 61¼. Rye was ¼ lower to ¼ higher, September 1.47¼-¼. Barley was ¼ to ¼ lower, September 1.09.

### Labor Sees Slight Drop

WASHINGTON, Aug. 9. (AP)—Portland's industrial employment in May was 14 per cent lower than in 1944 but 339 per cent higher than in 1937, the bureau of labor statistics said today.

The May figure was the lowest since September, 1942.

### Portland Produce

PORTLAND, Ore., Aug. 9. (AP)—Butter: A grade prints 45½-46½; B grade prints 45½-46½; C grade prints 45½-46½.

Butterfat—First quality, maximum of 9 of 1 per cent acidity, delivered in Portland 52-53½; premium quality maximum of 25 of 1 per cent acidity 53-54½; valley routes and country points 2 less than first or 50-51½.

Eggs—Selling price to Portland retailers: Oregon triplets 30½; loaf 30½; triplets to wholesalers 27½; loaf 26½; to retailers: AA extra large 57½; A extra large 55½; A large 53½; A medium 48½; small (pullet) 42-43½ dozen.

Live poultry—Buying prices from producers: Broilers up to 2 lbs. 31½; roasters over 2½ lbs. 31½; Leghorns 28½; colored hens all weights 27½; old roosters and stags 23½ lb. Rabbits—Government ceiling: Average country killed to retailers 44½; live price to producers 22-24½ lb. Turkeys—Government takes supply, market nominal.

Onions—Oregon: Dry No. 1, 2.85 No. 2, 2.50; Texas 3.90; coarsella wax 3.50; red 3.25; yellow 3.25; green 1.05-1.10 doz. bunches.

Country meats—Rollback price to retailers: Country killed hogs, best butchers, 120-140 lbs. 19-19½; vealers 18-18½; country hams 14-14½; culls 12-15½; beef AA 21½; A 20½; B 18½; C 16½; canner-cutters cows 13½-14½; bulls canner-cutters 14-14½; lambs AA 24½; A 24½; C 10-20; ewes FS 13½; A 12; B 10½.

Casaca bark—Dry stock 37½ lb. Mohair—1942, 12-month 45c lb. Hay—Wholesale prices nominal: Alfalfa 1.50; clover 1.50; vetch 24-25; valley points; timothy (eastern Oregon) 35-36; clover 22 lb.

Portland Grain

PORTLAND, Ore., Aug. 9. (AP)—Wheat futures and cash grain unquoted.

Cash wheat (bid): Soft white 1.49; soft white (excluding Rex) 1.50; white club 1.51; western red 1.51.

Hard red winter: Ordinary 1.47½; 10 per cent 1.50½; 11 per cent 1.57; 12 per cent 1.57.

Hard white: 10 per cent 1.54; 11 per cent 1.57; 12 per cent 1.63.

Today's car receipts: Wheat 89, barley 5, flour 5, corn 6, oats 1, millfeed 8.

### Portland Livestock

PORTLAND, Ore., Aug. 9. (AP)—(WFA) No. 1 Salable cattle, total 290; calves 75; market active, steady; common-medium grass steers largely 12-14½; cutters down to 10.00; common-medium heifers 10.00-12.50; odd head to 14.25; canner and cutter cows 7.00-8.00; shells down to 6.00; fat dairy type cows 10.00-30; medium-good beef cows 11.00-12.25; part load good young cows 13.00; medium sound young 13.50-14.25; good heifers 14.00-15.00; sizeable lot 345 lb. calves 14.00.

Salable hogs 50, total 225; market active, steady; barrows and gilts 13.75; sows 15.00; good stags with 70 lb. dock; no feeder pigs offered.

Salable sheep 450, total 750; market

### Livestock and Poultry

4 FEEDER pigs \$21.50 each, 5 2-YR. old pigs \$12.50 each. Lawn mower \$8. 1 E. Snelten, 3070 E. Turner Rd. 1 mi. N. of Krueger Grocery, Ph. 2194.

3-YR. OLD Jersey-Guernsey heifer, milking 2 gallons, best of home W. of Oak Knoll golf course on S. side Salem-Dallas Highway. A. J. Beck.

RABBITS WANTED, all sizes, 4 to 6 lbs. White, 24c lb., colored 22c lb., live weight. Rabbit skins, best prizes. Wire stretchers and other supplies. Salem address, 60 Ratcliff Drive, phone 2-1330. Portland address, Rabbit Meat Co., 8817 S. E. Stark, SUN. 1722.

HIGHEST PRICES paid for rabbit skins. Also latest wire stretchers for sale. West Side Fur Co., 3408 Cherry Avenue, Ph. 2-1234 or 2-1882.

RABBITS WANTED, all sizes, top prices for furs, Angora wool. Full line of supplies, fur stretchers, remedies, hardware cloth, ready built hutches, and breeding stock. Raise rabbits commercially, big profits. 84 page rabbit journal on request. Harder Rabbit Farm, 3408 Cherry Avenue, Ph. 2-1234 or 2-1882.

WANTED: Fresh and Springer dairy cows and Heifers. Joe Burke, 270 Silverton Rd. Ph. 2-4074.

HOP PICKERS WANTED

OPERATE hopyard store and short-order restaurant, best location on Highway, in largest hop growing district. Money maker for right couple. You furnish restaurant equipment. Apply Lloyd Hunt, 10000 Highway 100, Route 2, 7 mi. S. E. of Independence or phone 3871.

HOP PICKERS WANTED FOR EARLY LATE HOPS. BUS TRANSPORTATION TO YACONS ONLY. 7 MILES FROM SALEM. TO REGISTER, PHONE 8225, ASK FOR KOLA McCLELLAN.

HOP PICKERS wanted between Aug. 18th and 20th, 120 acres early and late hops. Cabins, lights, wood furnished. Clean shady camp grounds. Register now. Mittoma Hop Ranch, Independence, Ore. Box 260, Phone 3571.

HOP PICKERS wanted for our yard 12 miles north of Salem. Picking begins about Aug. 16. Mission 2247 or write Gervais, Oregon. Mission Bottom Hop Co.

WANTED 4000 HOP PICKERS 250 FIELD WORKERS

The largest crop we have ever grown. 700 acres early and late hops. Cabins, lights, wood, furnished. Clean, shady camp grounds. Pickers' buses to Salem, West Salem, Independence, Dallas, Monmouth and other points in district. REGISTER NOW—WRITE OR CALL. Eola Hop Yard, West Salem, Ore. Phone 2130, or write to J. C. Penney Co., Inc., phone 27-22, 21 A. Bell, sup. 2231, Steve Vanhouten, sup. 2231, Williams Hardware branch office, Salem, Ore. phone 9235.

HOP PICKERS WANTED

250 acres choice river bottom hops. 4 miles S.W. of Independence. Fine picking beginning August 15. Free bus transportation to and from yard. Register at 14 North Commercial, Salem, Ore. or write

JOHN J. ROBERTS & CO. Salem, Oregon, Phone 9623

HOP PICKERS wanted, starting Aug. 20. Almon Winn, Rt. 2, Jefferson, Ore. Buena Vista Rd.

WANTED: Hop pickers. Early and late hops, cabins, lights, wood furnished. Store on grounds, starting Aug. 15. Write to J. C. Penney Co., 21 A. Bell, sup. 2231, Steve Vanhouten, sup. 2231, Williams Hardware branch office, Salem, Ore. phone 9235.

HOP PICKERS WANTED

250 acres choice river bottom hops. 4 miles S.W. of Independence. Fine picking beginning August 15. Free bus transportation to and from yard. Register at 14 North Commercial, Salem, Ore. or write

JOHN J. ROBERTS & CO. Salem, Oregon, Phone 9623

HOP PICKERS wanted, starting Aug. 20. Almon Winn, Rt. 2, Jefferson, Ore. Buena Vista Rd.

WANTED: Hop pickers. Early and late hops, cabins, lights, wood furnished. Store on grounds, starting Aug. 15. Write to J. C. Penney Co., 21 A. Bell, sup. 2231, Steve Vanhouten, sup. 2231, Williams Hardware branch office, Salem, Ore. phone 9235.

HOP PICKERS WANTED

250 acres choice river bottom hops. 4 miles S.W. of Independence. Fine picking beginning August 15. Free bus transportation to and from yard. Register at 14 North Commercial, Salem, Ore. or write

JOHN J. ROBERTS & CO. Salem, Oregon, Phone 9623

HOP PICKERS wanted, starting Aug. 20. Almon Winn, Rt. 2, Jefferson, Ore. Buena Vista Rd.

WANTED: Hop pickers. Early and late hops, cabins, lights, wood furnished. Store on grounds, starting Aug. 15. Write to J. C. Penney Co., 21 A. Bell, sup. 2231, Steve Vanhouten, sup. 2231, Williams Hardware branch office, Salem, Ore. phone 9235.

HOP PICKERS WANTED

250 acres choice river bottom hops. 4 miles S.W. of Independence. Fine picking beginning August 15. Free bus transportation to and from yard. Register at 14 North Commercial, Salem, Ore. or write

JOHN J. ROBERTS & CO. Salem, Oregon, Phone 9623

HOP PICKERS wanted, starting Aug. 20. Almon Winn, Rt. 2, Jefferson, Ore. Buena Vista Rd.

WANTED: Hop pickers. Early and late hops, cabins, lights, wood furnished. Store on grounds, starting Aug. 15. Write to J. C. Penney Co., 21 A. Bell, sup. 2231, Steve Vanhouten, sup. 2231, Williams Hardware branch office, Salem, Ore. phone 9235.

HOP PICKERS WANTED

250 acres choice river bottom hops. 4 miles S.W. of Independence. Fine picking beginning August 15. Free bus transportation to and from yard. Register at 14 North Commercial, Salem, Ore. or write

JOHN J. ROBERTS & CO. Salem, Oregon, Phone 9623

HOP PICKERS wanted, starting Aug. 20. Almon Winn, Rt. 2, Jefferson, Ore. Buena Vista Rd.

WANTED: Hop pickers. Early and late hops, cabins, lights, wood furnished. Store on grounds, starting Aug. 15. Write to J. C. Penney Co., 21 A. Bell, sup. 2231, Steve Vanhouten, sup. 2231, Williams Hardware branch office, Salem, Ore. phone 9235.

HOP PICKERS WANTED

250 acres choice river bottom hops. 4 miles S.W. of Independence. Fine picking beginning August 15. Free bus transportation to and from yard. Register at 14 North Commercial, Salem, Ore. or write

JOHN J. ROBERTS & CO. Salem, Oregon, Phone 9623

HOP PICKERS wanted, starting Aug. 20. Almon Winn, Rt. 2, Jefferson, Ore. Buena Vista Rd.

WANTED: Hop pickers. Early and late hops, cabins, lights, wood furnished. Store on grounds, starting Aug. 15. Write to J. C. Penney Co., 21 A. Bell, sup. 2231, Steve Vanhouten, sup. 2231, Williams Hardware branch office, Salem, Ore. phone 9235.

HOP PICKERS WANTED

250 acres choice river bottom hops. 4 miles S.W. of Independence. Fine picking beginning August 15. Free bus transportation to and from yard. Register at 14 North Commercial, Salem, Ore. or write

JOHN J. ROBERTS & CO. Salem, Oregon, Phone 9623

## Financial - Farm - Markets - Classified

### Help Wanted—Male

YOUNG Man or boy 16 or over to work in fruit & vegetable dept. Experience unnecessary. Saving Center, Portland 4.

PAINTERS WANTED. Must be real mechanics. None other need apply. Exp. foreman needed. F. O. Repine Co., 2565 Portland Road.

BOY, 15 years old or older, to work from 2:30 to 5:30 in the mornings. With extra hours it would average about 28 to 30 hours per week. Good pay. See Mr. Clark at Stager's, 3408 Cherry Ave.

YOUNG MAN or boy with some office experience five days a week; \$100 a month. State experience. P.O. Box 308.

MAN To cut wood. Ph. 7235, 294 N. Com'l.

MIDDLE Aged carpenter for perm. work. Pleasant working conditions, monthly salary.

DAIRYMAN capable of supervising Jersey herd and training boys in dairy work \$110 plus maintenance. No family. Oregon State Training School, Woodburn.

BODY MEN and mechanics. Herrall-Owens Co.

MAN to work in plant. Mayflower Milk, 910 S. Com'l.

WANTED: Men to work in cemetery. Call at 290 W. Hoyt or Ph. 8852.

### Help Wanted—Female

A WOMAN WHO WOULD LIKE TO SELL MERCHANDISE

IS NEEDED FOR AN ATTRACTIVE, WELL - PAID POSITION. EXPERIENCE DESIRABLE, BUT NOT NECESSARY, IF YOU HAVE A PLEASANT PERSONALITY, AND ARE WILLING TO LEARN.

J. C. Penney Co. Inc.

SALES LADY wanted. Young woman with some selling experience to sell shoes and purses. Apply Paramount Shoe Store, 405 Oak St.

WANT lady dinner cook. Day shift. Sundays off. Good wages. 1241 State.

HOUSEKEEPER wanted for elderly man. Good wages. All modern conveniences. 205 S. 21st St. Phone 6638.

WOMAN for gen'l. housework. Stay nights. Ph. 7498.

WOMAN to do housework and care for children. 711 Rosemont, W. Salem.

SOMEONE to care for children in my home days. Ph. 2-1853.

WANTED: Experienced seamstress to teach sewing and hand work at girls' trade school. Note and car loans. Board. Ph. 2322.

USHERS over 16, full or part time. Apply to person. Grand Theatre.

WOMAN cook in private boarding house. Hours 7 p.m. to 10 p.m. Winter. 15 to 18 months to repay.

WANTED: Girl for stenographic and office work. Phone 5405 evenings.

YOUNG Woman to watch warehouse office and answer phone 8 to 12 A.M. Mon. to Fri. 56c hour. Call in person at 2698 Portland Rd., near Valley Pack Co., Thurs. or Fri. from 11 to 12 A.M.

WANTED—First class stenographer in law office at good salary. Applicants write letters of reference, experience, prospects of permanency, telephone number and address. Send letters to Box 69, Statesman.

WATERS, night shift; also comb. waitress, day shift. No Sunday. 300 State, 380 Center.

EXP. waitress wanted, day shift. No Sundays. Dew Drop Inn, 365 Center.

YOUNG woman or girl with some office experience, note and car loans. \$100 a month. State experience. P.O. Box 308.

Experienced waitress Apply Shanghai Cafe, 222½ N. Com'l. after 5 P.M.

EXPERIENCED waitress, good hours and wages. Permanent. Pades Coffee Shop, 1241 State st.

WATERS, night shift; also comb. waitress, day shift. No Sunday. 300 State, 380 Center.

EXP. waitress for part time work Saturdays and Sundays. The Spa.

FOUNTAIN GIRL: The Spa.

WOMEN HELP WANTED at City Cleaners. Also checker needed. 1249 State St.

Salesmen Wanted