

IT SEEMS TO ME

By Charles A. Squire

Heads are bobbing in animated conversation in Ankara. There is high talk over the coffeecups in the cafes of the city. Istanbul, old Constantinople, sleepy with its centuries of Byzantine history, pricks up its ears and wonders if a new leaf is to be turned in its own long record book.

Cause of the fluttering is Russia's denouncing its 1925 treaty of friendship and neutrality with Turkey. This announcement means that the treaty will be allowed to terminate this November 7. Without the denunciation renewal would have been automatic.

London speculates that Russia may be wanting a real alliance with Turkey which would bring that country within the orbit of Soviet influence, and would permit unrestricted use of the Bosphorus and Dardanelles straits by the Russians. Under the present treaty convention the straits are closed for military use. As a result Russia had to import war supplies through Murmansk on the White sea, across Iran from the Persian gulf, and through Vladivostok on the Pacific.

Evidently Russia wants to escape the constrictions at Istanbul. Roosevelt and Churchill were probably fearful that Marshal Stalin would bring up the Turkish question at Yalta with demand for control of the straits to give his country an outlet to the Mediterranean. It was not brought up at Yalta, but the present move of the Kremlin may be an attempt to solve its problem by direct approach to Turkey.

What will Turkey do? The old sultan was long known as the "sick man of Europe."

(Continued on editorial page)

### Service Calls May Drop 31% After July 1

WASHINGTON, March 22-(AP) Draft calls may drop an average of 31 per cent after July 1, the White House disclosed today coincident with a house military committee vote to extend the draft law without change.

President Roosevelt, sending up a request to congress for an appropriation to finance selective service another fiscal year, said this contemplated an average draft call of 93,000 a month.

This compares with a figure of 138,000 which Maj. Gen. Stephen Henry told the house committee the expected average from now until June.

The White House spoke of the after-July need as being merely one of replacements. It said that by then "mobilization of the largest armed force by far in the nation's history" will be complete.

### Powerful U.S. Carrier Force Still on Prowl

U. S. PACIFIC FLEET HEADQUARTERS, Guam, Friday, March 22-(AP) Vice Adm. Marc A. Mitscher's potent carrier task force presumably still was on the prowl today, with the Tokyo radio hinting it might scourge the Ryukyus or Formosa while withdrawing from the mauling given Japanese warships Monday in Japan's inland sea.

There has been no official word on the whereabouts of the force, a part of the Fifth fleet, since it moved close to Japan to permit its planes to search out enemy fleet units at their bases in the inland sea.

In the days that have elapsed since that strike, Admiral Mitscher has had time to move his ships into the Formosa area, about 900 miles from the scene of Monday's crippling blows to imperial warships. In so doing he would pass the Ryukyus, lying between Formosa and Japan.

### Bitter Row Flares in Commons When Churchill Names Britain's Delegation to Security Meet

By John A. Farris, Jr. LONDON, March 22-(AP) A bitter political row flared up in commons today when laborites accused Prime Minister Churchill of packing Britain's seven-man, two-woman delegation to the world security conference at San Francisco in order to maintain his conservative party's supremacy after the war.

Temper snapped in the usually staid house as Churchill announced that Foreign Secretary Anthony Eden would lead these delegates to the conference beginning April 25.

# SOVIETS DRIVE TO CLEAR UPPER SILESIA

## Neustadt Captured By Reds

### Russ Within Mile Of Czech Land; 45,000 Nazis Fall

By Romney Wheeler LONDON, Friday, Mar. 23-(AP) Russian troops, launching a powerful offensive to clear industrial upper Silesia, have captured the war production city of Neustadt, driven within one mile of Czechoslovakia and killed or captured 45,000 Nazi troops in a trap forged by twin Red army advances of 25 miles, Moscow announced last night.

Cutting through seven major enemy strongholds and more than 400 other towns and villages south and southeast of besieged Breslau, troops of Marshal Ivan S. Konev's First Ukrainian army were advancing on an 80-mile front and threatened the key towns of Strenlen, Munsterberg, Niesse, Loebusch and Ratibor.

Simultaneously, Soviet forces battled to within three and one-half miles of the Baltic port of Gdynia and tightened their siege and around the former free city of Danzig. Deep in Czechoslovakia's Tatra mountains, other Russian shock troops forced the Hron river within five miles of Banska Bystrica.

Konev's new offensive dovetailed with a thunderous assault which the Germans said the Russians had launched against the prize German naval base of Stettin, and with a fast-driving Red army offensive in Hungary which Eerlin said was hammering west of Budapest within 95 miles of Vienna.

Konev's mighty army went over to the offensive in areas west and south of the Oder river town of Oppeln, 47 miles southwest of Breslau, in extreme southeastern Germany.

Striking south from Grottkau, 23 miles west of Oppeln, one arm of a giant pincer plunged 25 miles toward Neustadt, 58 miles southeast of Breslau, while the second struck 25 miles from bridgeheads across the Oder between Krappitz, 13 miles south of Oppeln, and Ratibor, 40 miles southeast of Oppeln.

### Taxi Driver Turns Tables On Assailant

Don Ethridge, 32, cab driver of 3618 Maple ave., was the victim of an attempted robbery Thursday night but was able to turn the tables and deliver his would-be assailant to the police station himself.

Ethridge told police that two youths about 16 years of age hailed his cab close to midnight and asked to be driven to box 644, route two, about four miles from Salem. When they reached the driveway he asked one of the boys to get out and open the gate so that he could drive nearer the house. After the one boy complied with the request, the other in the back seat drew a loaded revolver and hit Ethridge three times on the back of the head.

Fortunately, he said, he was able to turn around and take the gun from the boy, but was unable to hold both, so the other youth got away. He then made the boy drive the cab back to town and delivered him to city policemen, who booked the juvenile on a charge of assault with a dangerous weapon.

Ethridge was treated by first aid men for slight head injuries.

### Hull Hopes to Attend San Francisco Meet

WASHINGTON, March 22-(AP) Joseph G. Grew, acting secretary of state, said today that Cordell Hull intends to go to the San Francisco conference late next month if his health has sufficiently improved.

ministry; William Mabane, food; Dingle Foot, economic warfare; Miss Ellen Wilkinson, home security, and Miss Florence Horsburgh, health.

When the prime minister announced Eden, a conservative, would lead the delegation, the labor members immediately attacked. Aneurin Bevan, a consistent critic of Churchill, asked why Attlee, a laborite, had not been given the chief role.

Churchill explained that Attlee had no constitutional authority while Eden, holding the seals of state, was responsible for the conduct of foreign affairs.

# The Oregon Statesman

FOUNDED 1851 NINETY-FOURTH YEAR 16 PAGES Salem, Oregon, Friday Morning, March 23, 1945 Price 5c No. 315

## Warcrime Details Sought

### House Members Declare Actions Are Kept Secret

WASHINGTON, March 22-(AP) A demand that congress pry the lid of secrecy from operations of the allied war crimes commission was made today before the house foreign affairs committee.

Rep. Celler (D-NY) called for a "full time debate" in the house after Herbert A. Pell testified that he doesn't know whether he still is this government's representative on the commission charged with fixing the war guilt on enemy leaders.

"The work of the commission cannot remain secret," Celler declared. "Set the pitiless light of publicity reveal the places where ineptitude and indecision are crippling its efforts."

Pell was called before the committee to review the work of the war crimes commission until early this year when he was dropped by the state department which said the action was necessary because congress failed to appropriate money for U. S. participation in the deliberations.

Until the time he left the commission, he said, 2000 war crime cases had been presented and indictments made in half of them. Formal charges against Adolf Hitler were not preferred until last winter — and then they were presented by the Czech government.

Asked about the delay in Hitler's case, Pell replied: "Simply because no government had reported him." The commission, he explained, could not use its own initiative in such cases.

## Snell OKs Bill For Special June Election

Gov. Earl Snell on Thursday signed house bill 418 calling a special election to be held June 22, 1945, for approval or rejection of two measures referred to the people by the 43rd legislature.

Voters will consider the proposal of a five-mill tax levy for two years to raise \$10,000,000 for construction of new buildings by the state and the state board of higher education. The state would expend \$6,000,000 while \$4,000,000 going to the board of higher education would be used for state colleges. The levy would be offset by surplus state income taxes.

A two-cent tax on each package of cigarettes sold in Oregon would be levied under the other measure. The \$2,000,000 it is estimated such a tax would raise annually would go to the public schools.

Snell signed 10 other bills Thursday, including one appropriating \$26,000 for preparation and direction of health education in public schools of the state.

## Morgenthau Looking For Tax Evaders

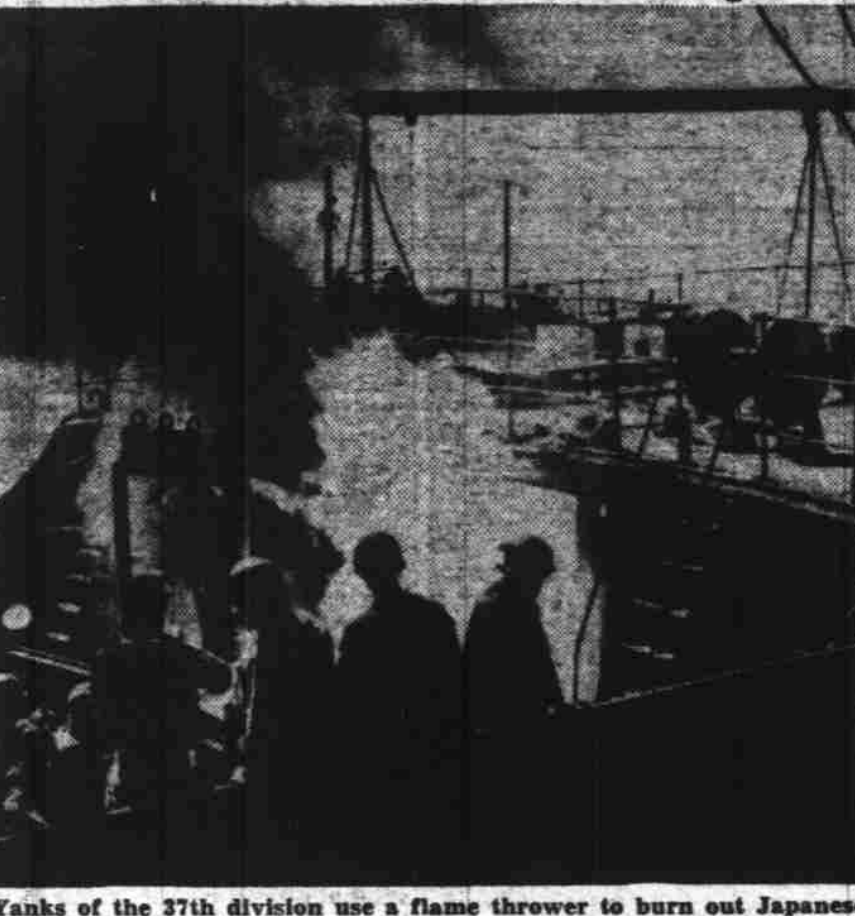
WASHINGTON, March 22-(AP) Treasury Secretary Henry Morgenthau disclosed today he is looking into income tax evasion by wealthy persons — "the fellow with the suite of big rooms and the lush boys."

He told reporters he expected to announce something soon.

## Spain Angry At Japanese

MADRID, March 22-(AP) Spain moved closer to an outright break with Japan tonight as the Spanish government charged the Japanese with "systematic, premeditated" murder of "defenseless Spanish men, women and children and the destruction of Spanish property in Manila prior to the city's liberation by American troops.

## Flame Thrower Routs Japs



Yanks of the 37th division use a flame thrower to burn out Japanese hiding in the forecastle of a partially sunken ship in Manila harbor. (AP wirephoto from U. S. army signal corps)

## Government Policies Keeping Meat Short Congress Hears

WASHINGTON, March 22-(AP) Congressional groups heard complaints from the range country and packing houses today that there is plenty of meat on the hoof but that government policies keep it off legitimate buyers' tables.

A retailer said "meateasies" are getting more and more of the steaks and roasts to sell on the sly.

The congressmen also got this rejoinder from the office of price administration: Prices and subsidies have been adjusted to costs and the trade generally is coming out pretty well.

Said Rep. Barrett (R-Wyo) at a meat inquiry called by Rep. Sundstrom (R-NJ), "We've got 10,000,000 excess cattle now out in the west and there's no reason at all why there should be a meat shortage. OPA is to blame."

In the same unofficial meeting with industry and government spokesmen, A. L. Erikson, chief of the OPA meat price branch, said all types of livestock ceilings have been adjusted to compensate for increased costs.

## Cost of Rhine Drive Begins To Show Up

WASHINGTON, March 22-(AP) The cost of the army's drive to seize the west bank of the Rhine river began to show up today in the casualty reports.

After more than a month during which the weekly increase in reported casualties grew progressively smaller, the army and navy released figures showing a rise of 19,998. The army accounted for 18,223 of the increase.

Undersecretary of War Patterson, listing army losses of 767,680 said the report covered the fighting during the latter part of February. It was at that time that the First and Ninth armies jumped off from the Roer river line in their final push to the Rhine.

Coupled with the navy's casualties of 91,907, the army figure pushed the over-all casualties since Pearl Harbor to 859,587.

## 42 Diphtheria Cases Caused By Raw Milk

MOLALLA, Ore., March 22-(AP) Source of the diphtheria epidemic which has stricken 42 residents of this little community was traced today to raw milk supplied by a dairyman who state and county health officers said was a germ carrier.

Dr. Harold M. Erickson, state health officer, said tonight his department had also found one "undiagnosed" case of a boy and a woman ill with clinical diphtheria in the dairyman's household.

"Contamination undoubtedly occurred at this source," Dr. Erickson declared. "The explosive type of outbreak in Molalla could only be due to an infected milk supply."

He stated that "proper pasteurization would have prevented an outbreak."

Partly Cloudy today with occasional brief showers and slightly cooler temperatures in the mid-Willamette valley area, predicts U. S. weather bureau, McNary field, Salem.

# Crossing Expected; 8000 Allied Planes Give Reich Lashing

## Defenses In Ruhr Pounded

By Charles Chamberlain LONDON, Friday March 23-(AP) More than 8,000 American and British planes gave Germany its greatest lashing to date yesterday, concentrating particularly on Nazi defenses east of the Rhine, and last night RAF Mosquitos maintained the terrific pressure by bombing Berlin for the 31st consecutive time.

The German radio declared that at least four other formations of night raiders were on the prowl over western Germany, the Hannover-Hildesheim area, Muenster and the province of Bavaria.

These were the major blows delivered during one of the finest flying days of the year yesterday: 1—Approximately 4000 planes, including 2000 American and British heavy bombers from Britain, tore up enemy concentrations and reinforcements within the Ruhr industrial basin and surrounding areas. This attack one of the most violent delivered by air power during the war, was directed at targets across the Rhine from Field Marshal Sir Bernard L. Montgomery's impending "jump off" positions.

2—A force of more than 500 Italy-based US heavy bombers blasted the big Ruhland oil refinery 70 miles southeast of Berlin. This blow was believed to have virtually halted the production of gasoline within the US 15th air force's range in southern Germany, Austria and Hungary.

3—Using the new 11-ton volcano bombs, British heavy bombers collapsed the main span and the approaches to the important Nienburg railroad bridge between Hannover and Berlin.

## Proposal of Peace From Nazis Denied

DUBLIN, March 22-(AP) A rumor that a German peace proposal had been presented to the United States minister through Prime Minister Eamon De Valera of Eire was denied flatly tonight by both American and German officials here.

David Gray, U.S. minister to Eire, was quoted in high Dublin quarters as saying "there is no truth in" the report that De Valera had tendered him a peace proposal received from Dr. Eduard Hempel, German minister in Dublin.

"No representations of any kind have been made to me, either directly or indirectly," Gray was quoted.

## Job of Registering Conquered Nazis Starts

WITH AMERICAN TROOPS IN GERMANY, March 22-(AP) The job of registering and fingerprinting conquered Germans has begun and ten million registration blanks have been sent to military government detachments in the conquered Rhineland areas. There are not that many people living in the occupied areas at present but AMG authorities expect to use up all the blanks, finger-printing 10 million Germans in the next few weeks.

## Shrubs Needed for Hospitalized; Legion Set to Aid; Call 9101

The natural beauties of the Willamette valley are being placed in abundance at the navy hospital at Camp Adair where hundreds of men are fighting for life and health.

Through the cooperation of American Legion Capitol post number 9, shrubs by the truckload are being taken to the hospital where pain-ridden men may see and appreciate—and may know that their valor is far from forgotten.

# Victorious Artillery Barrage Reported



The U. S. Third Army under Lt. Gen. George S. Patton, Jr. has virtually completed a brilliant campaign in the Saar area on the west bank of the Rhine and is reported ready to storm to the east bank of the river barrier.

## Panay Yankees Seize Nearby Guimaras Isle

MANILA, Friday, March 23-(AP) Fortieth division doughboys, invaders of Panay, hopped across a mile and one-half strait and seized 25-mile-long Guimaras island without opposition Wednesday in a move to safeguard the shipping lane into the captured port of Iloilo.

Heavy bombers, meanwhile, lashed Cebu island with 240 tons of explosives in three successive days.

Mountainous Guimaras is directly opposite Iloilo and helps form one of the best harbors and seaplane bases in the central Philippines.

Gen. Douglas MacArthur reported this 27th island invasion of the Philippines in his communique today, announcing only that "in a shore-to-shore operation our troops seized Guimaras island, southeast of Panay."

## Canned Goods Supplies Cut

WASHINGTON, March 22-(AP) Shipments of canned fruit and vegetable products to civilian outlets will average one-fifth less during the first half of 1945 than in the corresponding period of last year.

This was stated in a report on the fruit and vegetable canning industries released jointly today by the commerce department and the office of price administration.

The report said shipments in the second half of this year may be somewhat larger than in the first half. But total supplies for civilians in the "pack year" 1945-1946 are likely to be six per cent smaller than those during the 1944-1945 period.

trucks are available to pick up all donations and transfer them immediately to the hospital where Capt. Paul Wilson, commandant, will see to their placement.

## Artillery Barrage Reported

By Austin Bealmeur PARIS, March 22-(AP) Two US armies crushed all major resistance west of the Rhine today in the last phase of a battle that cost the Germans 100,000 captives alone, and the enemy said the river barrier was about to be stormed both from the Palatinate and opposite the Ruhr, which was blasted by thousands of allied warplanes.

One German report said Lt. Gen. George S. Patton's Third Army had massed 300 regular and amphibious tanks and strong engineering and motorized units for a smash into the mountainous inner core of the Reich.

Another declared that Field Marshal Sir Bernard L. Montgomery had opened a thunderous artillery barrage to screen a Rhine crossing west of Wesel, adding to destruction wrought by the thousands of warplanes which throughout the day sowed ruin through the Ruhr valley.

Only 4000 Left Third Army strategists now were free to plan the crossing of the Rhine, for possibly no more than 4000 German effectives remained in action west of the stream after one of the worst disasters ever visited on German arms.

Written off were the great Rhine cities of Mainz and Ludwigshafen, where resistance folded during the day and the few defenders were chased into corners from which there was no retreat, with the Rhine bridges blown.

Field Marshal Albert Kesselring has succeeded Field Marshal Karl Von R. Neustadt, foremost Prussian strategist, as commander of all enemy forces on the western front, it was stated at Montgomery's headquarters. Kesselring gained stature among the nazis because of his stubborn defense of northern Italy.

The US First Army moved into position to outflank the Ruhr from the south, increasing its hold on the Rhine's east bank to 31 miles and deepening its bridgehead to nine miles.

The First army now held nine miles of the south bank of the Sieg river northeast of Bonn within a dozen miles of the Ruhr's south rim and was ready to hurdle that minor river barrier and strike northward.

(The American broadcasting station in Europe said in a broadcast heard by NBC that the Yanks had crossed the Sieg and captured Siegburg, city of 20,000.)

Southward the First army bridgehead extended to within seven and a half miles of Coblenz, on the west bank, where the Third army sits in firm control.

German broadcasts admitted that the bridgehead had been mushroomed until now it had achieved "tactical importance" and might well form the south jaw to Montgomery's northern pincer. The enemy said Montgomery had tremendous forces poised ready to strike.

## 'Volcano' Bomb Destroys Isle

LONDON, March 22-(AP) The RAF's new, 11-ton "volcano" bomb literally destroyed a small granite island off the British coast in its first test, the magazine "Aeroplane" said today.

Describing the bomb, now in use on Germany, the magazine said: "Its first tests were conducted on a remote and uninhabited granite island off the British coast." Release of the bomb was followed almost immediately by a colossal explosion and when the large smoke cloud, characteristic of the new bomb, disappeared the island was conspicuous by its absence.

Weather table with columns for location, Max. Min., and Rain.