

### Soviets Near Latvia in New 22-Mile Gain

(Continued from Page 1)

radio began preparing the people for a large-scale withdrawal. Not Much Choice

"It is obvious," said a Berlin military spokesman in a broadcast, "that the front cannot remain as it is. There are two alternatives. One is a large-scale counteroffensive and the other the adaptation of the entire front to new lines. Since we are on the defensive in the east, the second alternative is the one to be applied."

The thrust by Yermenko, a hero of the soviet conquests at Stalingrad and in the Crimea, was preceded by extremely heavy aerial and artillery bombardment which blasted great holes in German fortifications.

The supplement said the Germans had erected a deeply echeloned defense belt they called the "panther line," consisting of wide minefields, trenches covered by barbed wire and concrete firing points.

Soviet infantry fought through these barricades and in the first hours of the offensive inflicted large losses on two Nazi SS divisions, this account said.

The new drive brought no abatement in the power of the Russian blows on other sections of the front.

All Fronts Active

Associated Press Correspondent Eddy Gilmore in a dispatch from Moscow said soviet forces had closed around the outer defenses of the southern Latvian city of Daugavpils on three sides. Another force was pushing west of Wilthuanis, and farther south red troops pressed within 28 miles of the large Polish rail center of Grodno by capturing Ostrino and Nowy Dwor.

The drive along the railway from Baranowicz toward Bialystok also progressed and Moscow announced the capture of the railway station of Zelwa, just 14 miles east of the important junction of Walkowysk.

The central front's spearhead, however, is the assault directed toward East Prussia along a line southeast of Wilno.

Front Growing Short

STOCKHOLM, Thursday, July 13.—(AP)—The German high command is "discussing plans to shorten the front," as the result of the Russians' plunge to Alytus, 50 miles from the East Prussian border, the Berlin correspondent of the newspaper Dagens Nyheter said today.

This was interpreted here as meaning that the Germans are preparing to evacuate the Baltics. Allied sources said an estimated 200,000 Russian partisans are re-treating with the Germans in Poland and as they move back are disrupting German communications and causing great confusion behind the wavering German lines.

West Coast Cuts Half of US Lumber

SEATTLE, July 12.—(AP)—Approximately one-half the lumber the government's central procuring agency bought the first six months this year came from west coast mills.

The West Coast Lumbermen's association, disclosing this today in the monthly report, said production virtually reached in June the amount in April, before the walkouts, and was now neck-and-neck with last year's figure at this time.

"The lumber industry is now so deep in war requirements that it has little time or thought for postwar prospects," the association said. "However, demands are already taking shape for large postwar reconstruction programs overseas, indicating that the end of the war will mean very little change in calls for west coast production.

Average weekly production in June was 163,734,000 board feet, or 103.6 per cent of 1940-43 average, compared with the May weekly average of 140,796,000 feet. June orders averaged 163,623,000 board feet weekly and shipments 162,143,000 feet. The comparable May figures were: orders, 136,251,000 feet; shipments, 148,334,000 feet.

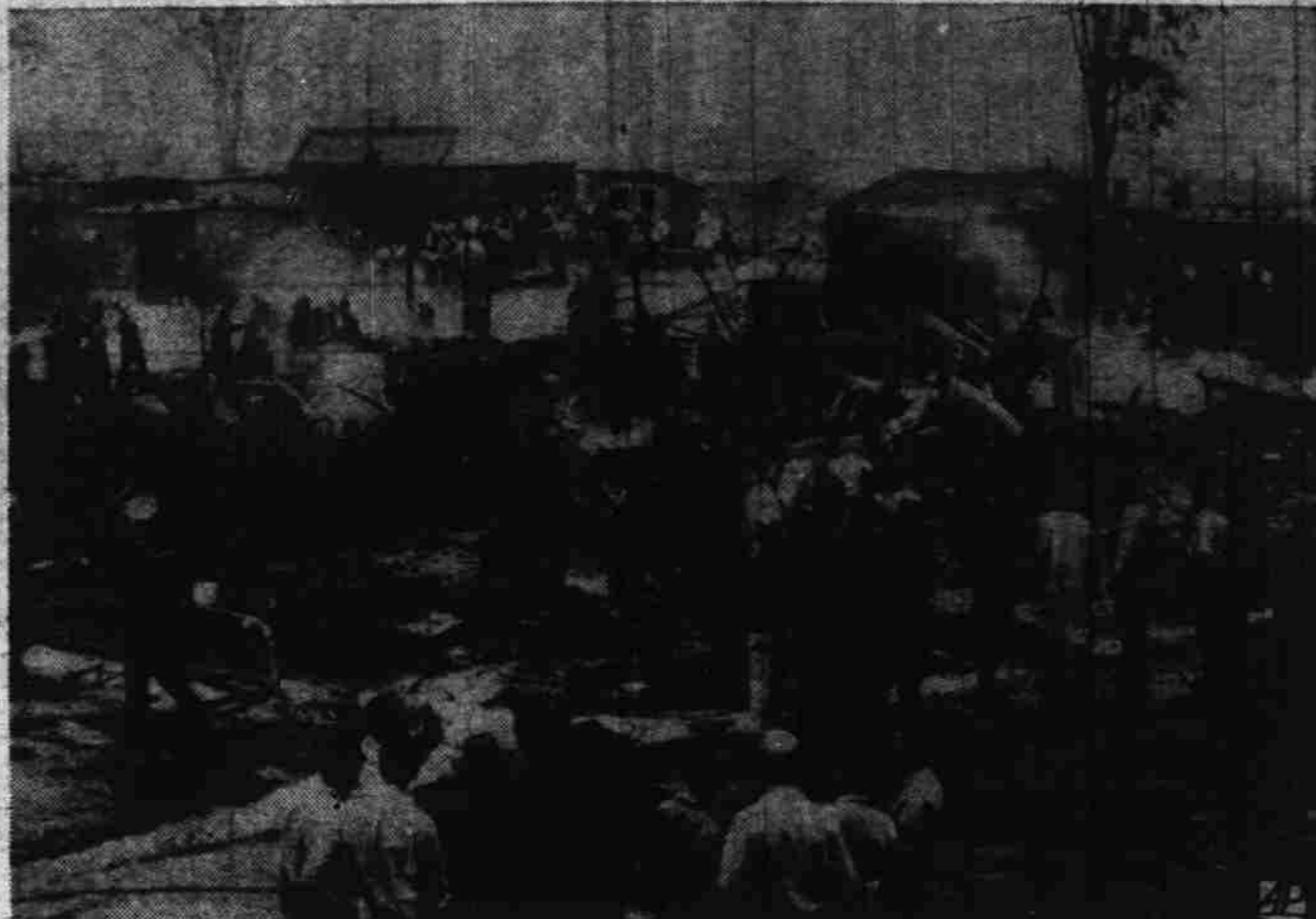
The unfilled order file stood at 1,956,838,000 feet at the end of June and gross stocks were 440,337,000 feet.

Two Officers Die In Weston Crash

WALLA WALLA, July 12.—(AP) A small single-wing army training plane from Pendleton, Ore., air field crashed this afternoon three miles northwest of Weston, Ore., killing the two men in the craft, it was announced jointly tonight by Maj. Alfred F. Claus, commanding officer of Pendleton field, and Col. David Wade, commander of Walla Walla air field and the satellite field at Pendleton. The craft was on a combat training mission.

Names of the fliers involved were Flight Officer E. N. Williams, Grand Island, Neb., and Second Lt. J. E. Benton of Atlanta, Ga.

### Bomber Crashes in Trailer Camp



Firemen pour water on smoldering buildings after an army bomber crashed and exploded in the center of a war workers' trailer camp at South Portland, Me. Twelve persons were killed and scores injured in the accident. (AP Wirephoto.)

### Planes and Guns Force Nazis Back

(Continued from Page 1)

force the enemy slowly back. Allied gains have been small but widespread and the enemy suffered considerable losses in abortive counterattacks.

Twenty Tanks Lost

In one German counterattack northwest of Imperiel St. Lo the Nazis lost 20 tanks Tuesday, and airmen on that day destroyed or damaged 31 of Marshal Erwin Rommel's hoarded armor. The allied communique said more than 40 German tanks were knocked out by ground action alone Tuesday.

Allied airmen raked German transports, supply facilities and troops all the way from Brussels in Belgium to Bordeaux in southern France despite weather which prevented full employment of the allied air armadas.

The Americans moving on St. Lo made their biggest strides during the day east of the fortress city, which is a seven-way road junction. St. Andre de L'Epine, a German stronghold three miles northeast of St. Lo and just north of the St. Lo-Bayeux road, was captured as the troops went on and spread their assault lines in the fields below the spires of ancient St. Lo.

Villages Captured

The village of Le Calvaire, three and one-half miles east of St. Lo on the road to Bayeux, also was captured, as well as St. Pierre de Semilly, three miles from St. Lo and 800 yards south of the Bayeux road.

The plunge southward indicated an American effort aimed at cutting the roads leading into St. Lo from the southeast and south.

Nearly 11 miles northwest of St. Lo, Americans sloshing through flooded lowlands captured most of the village of Andre de Bohon, five miles south of Carentan, and also pushed closer to Periers as they forced an outright withdrawal of German lines around Lessay on the west coast.

German tank losses mounted to 164. These were all destroyed in the last few days by the allies, but officers at Gen. Sir Bernard L. Montgomery's headquarters headquarters warned that Marshal Rommel's armored units still were formidable.

New Bauxite Ore Found in Oregon

Sizable deposits of high alumina iron ore or high-iron bauxite have been discovered over a considerable area in northern Washington county during recent investigations by the state department of geology, Gov. Earl Snell announced Wednesday.

In separate flat-lying deposits, five to 15 feet thick, usually overlain by several feet of silty soil, the ore probably could be mined by surface methods, investigators said. Accurate estimates of tonnage may not be made in the absence of thorough exploration and sampling.

"We feel that from a metallurgical standpoint the Washington county ores may be successfully treated to produce pig iron and alumina," the report to Snell read.

Demos Chary in Opposing Wallace

WASHINGTON, July 12.—(AP)—Talk of organized campaigns for half a dozen potential democratic vice-presidential candidates circulated in the capital today but everyone was keeping his political cards covered pending an anticipated endorsement by President Roosevelt of Henry A. Wallace.

The president is expected to indicate by a statement, or other means, that he would like to have Wallace as his running mate in his fourth term campaign.

Nevertheless, backers of other possible candidates were waiting to see the form and wording before deciding whether to open up with full-fledged campaigns.

### US Airpower To Enforce World Peace

(Continued from Page 1)

forces in such strength and in such state of readiness as to preclude a successful assault on our country or its possessions.

"2. By acquiring and maintaining air bases essential to our security and that of overseas trade. Must Be Prepared

"3. By facilitating the orderly economic expansion of domestic and international air transport and of private flying.

"4. By preserving a strong aircraft manufacturing industry."

Patterson told the committee the postwar military establishment, with its necessary industrial support, must be maintained on the assumption that this country will not again "be given such a period of grace between the start of war and the necessity for a full-scale military effort as was provided by France, England and Russia in the present war."

### Saipan Losses Go Over 15,000

(Continued from Page 1)

at Guam, the sixth in as many days, concentrated on military objectives at the towns of Agana, Umatac and Agat on the western shore. Buildings near Orote Point, at about the center of the western coastline, also were hit.

No Enemy Planes

Runways and defense installations were bombed on Rota and a twin engine heavy bomber was shot down.

There was no interception by enemy fighter planes over either Guam or Rota. Anti-aircraft fire was reported moderate.

The Seventh army air force continued its neutralizing raids in the Caroline Islands Monday. Nimitz reported: Heavy bombers met but meager ground fire and no interception as they plastered Dublon Island naval base, in Truk atoll, with 50 tons of bombs.

### Snell May Act in Fish Fund Deficit

Governor Earl Snell indicated Wednesday that he was considering definite action soon in the matter of the financial deficit threatening operations of the state fish commission.

Attorney General George Neuner has advised Gov. Snell that he believes the state emergency board legally may appropriate its funds to cover the deficit. Borrowing from the emergency board or accepting in advance poundage fees from the industry have been suggested as possible remedies for the current situation.

**HOLLYWOOD**  
Open 6:45  
**SPECIAL RETURN SHOWING**  
Now Playing

Irene Dunne  
Cary Grant  
in  
"The Awful Truth"

Ronald Colman  
and Jane Wyatt  
in the unforgettable  
"Lost Horizon"

NEWS & CARTOON

### Allies Shell Seaports on Gothic Line

(Continued from Page 1)

armies in their impending assault upon the nazis "Gothic line" defenses—supposedly the last strong natural barrier left to the enemy short of the Po river line near the top of the Italian boot.

(A dispatch from Zurich, Switzerland, Wednesday quoted a diplomatic source as saying that "Everything indicates" that the Germans "envisage an early and total retreat from Italy.")

American troops driving up the Era river valley, about 21 miles inland from the west coast, in an attempted flanking thrust against Livorno were reported meeting furious opposition above the enemy-held town of Lajatico, which had been bypassed.

Counterattacks fierce

German counterattacks were described as both frequent and fierce and there was no indication the Yanks had made any real progress in the past 24 hours.

The nazis now are using the greatest concentrations of artillery they have yet employed in Italy, including many guns captured on other fronts. This blanket of fire, together with the German soldiers' willingness to fight is making the allied advance a slow and grinding business.

### Senators Win Primary Vote

By the Associated Press

Two senators won renomination in Tuesday's primaries, returns last night disclosed, while in Massachusetts a CIO-backed candidate defeated his opponent by virtually a 2 to 1 count in the democratic gubernatorial contest.

The senators were Charles W. Tobey, republican, of New Hampshire, and Elmer Thomas, democrat, of Oklahoma. A third incumbent, Elbert Thomas, Utah democrat, was unopposed in his bid for a third term.

Tobey will be opposed by Joseph Betley, Manchester attorney who captured the democratic nomination without opposition. Oklahoma's Thomas will face William J. Qjten, and Elbert Thomas apparently will be pitted against Adam S. Bennion, power company executive, who led three opponents.

Boston's Mayor Maurice J. Tobin, supported by the CIO political action committee, soundly trounced Massachusetts' State Treasurer Francis Hurley, outspoken critic of the Roosevelt administration, in the state's democratic gubernatorial primary. His opponent in the general election will be Lt. Gov. Horace T. Cahill, who was unopposed.

### Court Acts in Circus Disaster

HARTFORD, Conn., July 12.—(AP)—The Ringling Brothers-Barum and Bailey circus was put in the hands of receivers today by order of Judge John H. King of the superior court.

In his chambers at Williamantic, Judge King named former Town Judge Edward S. Rogin of Newington as receiver on application of attorney Julius B. Schatz, counsel for a number of persons who have brought suit against the circus as a result of injuries in the fire which last Thursday swept the main tent and resulted in a death toll of 163.

Under a Connecticut law, the receiver, after posting bond, will take immediate possession of the circus and have an inventory made.

He said the receivership was for the preservation of the circus assets and to protect the circus as well as the claimants.

### ON the HOME FRONT

By ISABEL CHILDS

Most popular feature of the first SALEM CHERRIAN, printed news letter for the men in the service, was the Where's Elmer? column, listing literally hundreds of overseas addresses. You see, that is one reason the CHERRIAN continues as a letter—newspapers aren't supposed to print those addresses.

—V—

But we're ready to guess that there won't be any more Where's Elmer? fans from the second edition than Nurses Aides admirers. For about a dozen of the blue and white clad girls and their director and assistant director appear on the front page of the No. 2 issue, and even I can see several pin-up girls among them.

—V—

We find a certain sympathy with Lt. Bruce Williams' declaration that he'd rather have a small green Gravenstein apple than a coconut. Like Bruce, we were raised (not reared but raised) on Gravensteins and some of them were both small and green. But we didn't have to be shipped to the south Pacific to have that habit broken. "They" cut down the old apple tree.

### Commando Kills Nazi Commandant

By ASTLEY HAWKINS  
Representing the Combined Allied Press

ISLAND OF VIZ, Yugoslavia, July 12.—(AP)—A young British commando officer shot and killed the commandant of the German garrison on the island of Brac after entering the closely guarded headquarters disguised as a shepherd with a Sten gun hidden in a bundle of sticks. (Brac is below the Dalmatian port of Split).

This was one of many allied commando exploits harassing the Germans in the Dalmatian islands in recent months.

The commando, Lt. Bernard James Barton, 23, of Hastings, Sussex, was accompanied by two partisan soldiers.

Barton borrowed old civilian clothes and disguised himself with a mixture of mud and flour, joined the shepherd and helped him drive sheep into town past the patrols. The shepherd nearly ruined the whole plan by slapping Barton on the back and shouting "bravo" when they got past the patrols.

### Trapped Japs Try to Break Allied Lines

By RAY CRONIN  
Associated Press War Editor

Another major battle in the Pacific war area appeared to be shaping up last night as Gen. Douglas MacArthur reported that Japanese forces trapped in the New Guinea sector on British New Guinea's north coast were trying to break through allied lines to the west.

Opening skirmishes were fought on a battlefield 21 miles east of Aitape. The preliminary fighting appeared to indicate a determined Japanese effort to break through to Nippon bases.

It is believed that about 45,000 Japanese soldiers of the 18th army are trapped in the area west of Wewak.

General MacArthur also reported widespread aerial hits in the southwest Pacific ranging from Timor to Bougainville and north to Palau.

Intense action was reported from the Asiatic war theater. The Japanese registered a 25-mile advance in China's Kwangtung province but the Chinese held fast in the Hunan sector despite gas attacks.

Chinese quarters in Chungking, viewing the Japanese drive from the Canton area, were revising their belief that the Hunan crisis was past. The Japanese, trying to gain complete control of the Canton-Hankow railway, are now threatening Yingtak, 70 miles north of Canton and 190 miles south of the main Hunan battle front.

In Burma two Chinese armies

**CAPITOL**  
Today  
Continues From 1 P. M.

**NONE SHALL ESCAPE**  
The Most Thrilling Story Ever Told

**HENRY ALDRICH**  
"GODDAMN A HOUSE"

Co-Hosted by JIMMY LYDON

made furniture near Meigsburg. This gave the allies control of about 300 miles of the new Lado land supply line to China.

**GRAND**  
- Cont. From 1 P. M. -  
NOW PLAYING!  
INSIDE STORY of the toughest guy who ever bossed a shipbuilding crew or conquered a woman's heart!

**MICHAEL O'SHEA**  
**ANNE SHIRLEY**  
**Man from Frisco**  
GENE LOCKHART  
DORIS HAYES  
STEPHANIE BAKER  
PAT WALKER  
TOMMY BOSS  
A REPUBLIC PICTURE

CO-FEATURE  
**A LAFF RIOT!**  
Follow the LEADER  
Salpan Invasion News!

THE HOUSE THAT WIFE BUILT  
**LIBERTY**  
- Opens 6:45 P. M. -  
NOW SHOWING!

**Tyrone Power**  
**Linda Darnell**  
**Dean Jagger**  
"Brigham Young"

CO-FEATURE!  
**A PRAIRIE THRILL-FEST PACKED WITH RISKY RIDING AND SIX-GUN ACTION!**

**GENE AUTRY**  
**SMILEY BURNETTE**  
"PERILS OF NORTHWEST MOUNTED"

THE STATE HOUSE WITH THE BEST  
**STATE**  
- OPENS 6:45 P. M. -  
NOW PLAYING!

Spencer Katharine  
**TRACY HEPBURN**  
**Woman of the Year**  
The STARS and PICTURE of the Year!

CO-FEATURE  
True pictures of a bomber's life over Europe! Filmed in technicolor!

**"THE MEMPHIS BELLE"**

The Song of Songs of Every Woman!

**"Lady in the Dark"**

PARAMOUNT'S **Technicolor** triumph from the celebrated stage success!

Starring **GINGER ROGERS**  
**RAY MILLAND**  
**WARNER BAXTER**  
**JON HALL**  
with **MISCHA AUER**  
R. G. DE SYLVA Executive Producer  
**A MITCHELL LEISEN PRODUCTION**

The startling story of a woman's secret loves—sweet with music—bright with color—filled with dazzling scenes!

Directed by Mitchell Leisen • Screen Play by Frances Goodrich and Albert Hackett • Based Upon the Play by Moss Hart with Music by Kurt Weill and Lyrics by Ira Gershwin

**WALLACE GILMORE**  
DOORS OPEN AT 6:45 P. M.  
**Starts TODAY!**

COMPANION FEATURE  
**TERROR! Inside Nazi Lines!**  
**UNCENSORED**  
With Eric Portman and Phyllis Calvert