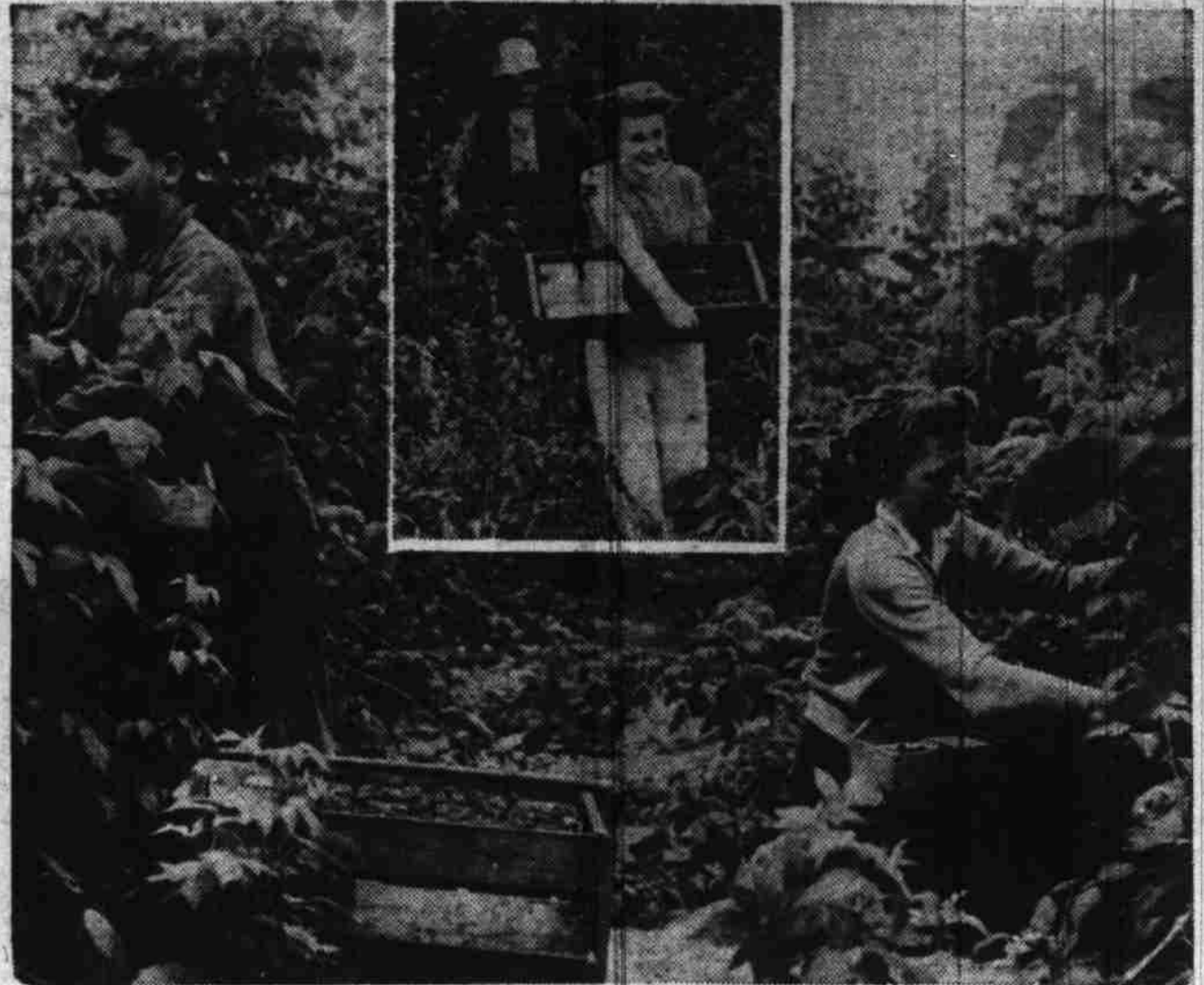


Co-Op Market Set to Open Wednesday

The producer-consumer cooperative market at 1288 State street is scheduled to open at 8 o'clock Wednesday morning...

Boys and Girls Harvest Berries



A familiar sight in the Willamette valley's cane berry fields for the next few weeks will be thousands of boys and girls like these members of the crop corps who are picking red raspberries...

Wheat Market Closes Firm

CHICAGO, July 10.—(AP)—The demand for wheat futures today more than offset hedging sales, and the market was firm at the close of a session during which prices had fluctuated within a narrow range.

Some commission house buying was attributed to orders from milling interests and to short covering. The relatively small volume of hedges indicated, traders said, that producers were withholding new crop wheat from the market in the hope prices eventually will be higher.

At Kansas City wheat had a firm undertone, apparently resulting from the possibility movement of the new crop will be slowed by heavy rains and by a shortage of labor at terminal elevators.

Confirmation that the Commodity Credit corporation would continue to buy cash wheat on the basis of six cents over the old loan rate of 85 cent of parity but one cent below the new 90 cent rate was regarded by some brokers as an attempt to persuade farmers to keep the grain on the farm.

At the close wheat was 1/4 lower to 1/4 higher than Saturday's finish, July \$1.58 1/2. Oats were 1/4 lower to 1/4 higher, July 77 1/4. Rye was 1/4 to 1/4, July \$1.13 1/2. Barley was 1/4 to 1/4 higher, July \$1.26 1/4.

RATION CALENDAR

(A daily feature of The Statesman market page.) PROCESSED FOODS: Book 4 - Blue stamps A8 through Z8 and A5 valid indefinitely.

Quotations at Portland

Portland Grain: Wheat: No futures quoted. No cash grain quoted. Cash wheat (bid): Soft white 1.46; sole white (excluding Rex) 1.48; white club 1.48; western red 1.48.

Portland Livestock

PORTLAND, Ore., July 10.—(AP)—Butterfat: First quality, maximum of 5 of 1 per cent acidity, delivered in Portland 52-52 1/2; premium quality, maximum of 28 of 1 per cent acidity 53-53 1/2; valley routes and country points 2c less than first or 50-51 1/2.

Salem Market Quotations

The prices below supplied by a local grocer are indicative of the daily market prices paid to growers by Salem buyers but are not guaranteed by The Statesman.

Stocks and Bonds

Table with columns for Stock Averages and Bond Averages, listing various market indices and bond values.

Cane Berry Harvest Is Underway at Aurora

AURORA—Picking of the cane berries started Monday morning in fields of Donald Garrett, Wade Russell, Elz Kiel, Bert Jesky and Paul Gording. Full crews are on the job.

Stocks Reach 7-Year Peak

NEW YORK, July 10.—(AP)—Assorted favorites reached 7-year peaks with gains of fractions to a point or more in today's stock market but enough selling cropped up to stall many leaders.

Salem Couple Buy Albany Bakery

ALBANY—The Curran bakery has been sold to Mr. and Mrs. Marinus Verhagen of Salem. The new owners are said to have been with the Cherry City Baking company, and to be experienced bakers.

Dusting Machine Given Early Trial In Peach Orchard

UNIONVALE—Speed was the aim of an early Saturday morning sulphur dusting to safeguard the 2 1/2 acre peach orchard at the C. J. Curtis farm again brown rot. It was the initiation for the modern new dusting machinery.

Sour Cherry Crop Is Heavy

MISSION BOTTOM—Late Townsend finished picking sweet cherries Saturday. The crop was estimated at about one-fourth but the quality was excellent. Sour cherry picking has commenced at the Weather orchard. This crop is much heavier than the early cherries.

Livestock and Poultry

14 NEW Zealand White does, 2 bucks, 1698 S. Capitol. FOR SALE: 6 mo. old Jersey heifer. Good milk stock. Ph. 2334.

BAKER AUCTION BARN

By Fairgrounds, Salem, every Wed. at 10:30 o'clock. Cows, heifers, yearling stock, feeder pigs, chickens and rabbits, enamel wood range, 6-piece dinette set, breakfast set, metal bed, coil springs, 1 1/2 bed, coil spring, 1 saw file, arvil chest of drawers, fireplace set, table radio, bird cage, lawn mower, table, cream separator, 3-horse cultivator, 3 walking plow, lots of doubletrees, 1 belt cutter, lots of tools. See me for furniture and farm sales. A. J. BAKER, SALEM, AUCTIONEER

Help Wanted

WANTED: 2,000 Hop Pickers. Harvest starts the latter part of August. 400 acres of high trellis hops. Cool, shady camps with lights, wood, shower baths and day nursery for children furnished free to pickers. Grocery store, meat market and 100 restaurant on grounds. Register in person at ranch office or write us for full particulars. E. CLEMENS HORST CO. INDEPENDENCE, ORE.



SCORCHY SMITH



BARNEY GOOGLE



MICKEY MOUSE



THIMBLE THEATRE



LITTLE ANNIE ROONEY



THE LONE RANGER



GOLD FEVER



ONCE YOU KETCH IT

Crossword Puzzle

Crossword puzzle grid with clues for horizontal and vertical words. Includes an answer key at the bottom.

'Strictly Private' By Quinn Hall

A cartoon illustration of a man at a counter with a sign that says 'COULD YOU GET A CO-SIGNER?' Below it is a 'U.S. ARMY' advertisement for a loan program.

A collection of small advertisements and notices, including one for 'Sears Flav-o-tainer Locker Bags' and another for 'Sears Farm Store'.

A large advertisement for 'Sears Flav-o-tainer Locker Bags' featuring an illustration of a man and a woman, and text describing the product's benefits for preserving frozen foods.