

# THE ASSOCIATED PRESS NEWS IN PICTURES



**CLOUDS—AND SMOKE—OVER PALAU.**—Smoke rises from Jap buildings and ships as Navy carrier-based planes attack the enemy stronghold in the southwest Pacific.



**ASLEEP ON THE DEEP.**—Nets of a catwalk on a Navy aircraft carrier form "hammocks" for these crewmen catching a few winks while off duty. Note man at right, a "talker," wears headphones and mouthpiece even in his sleep.



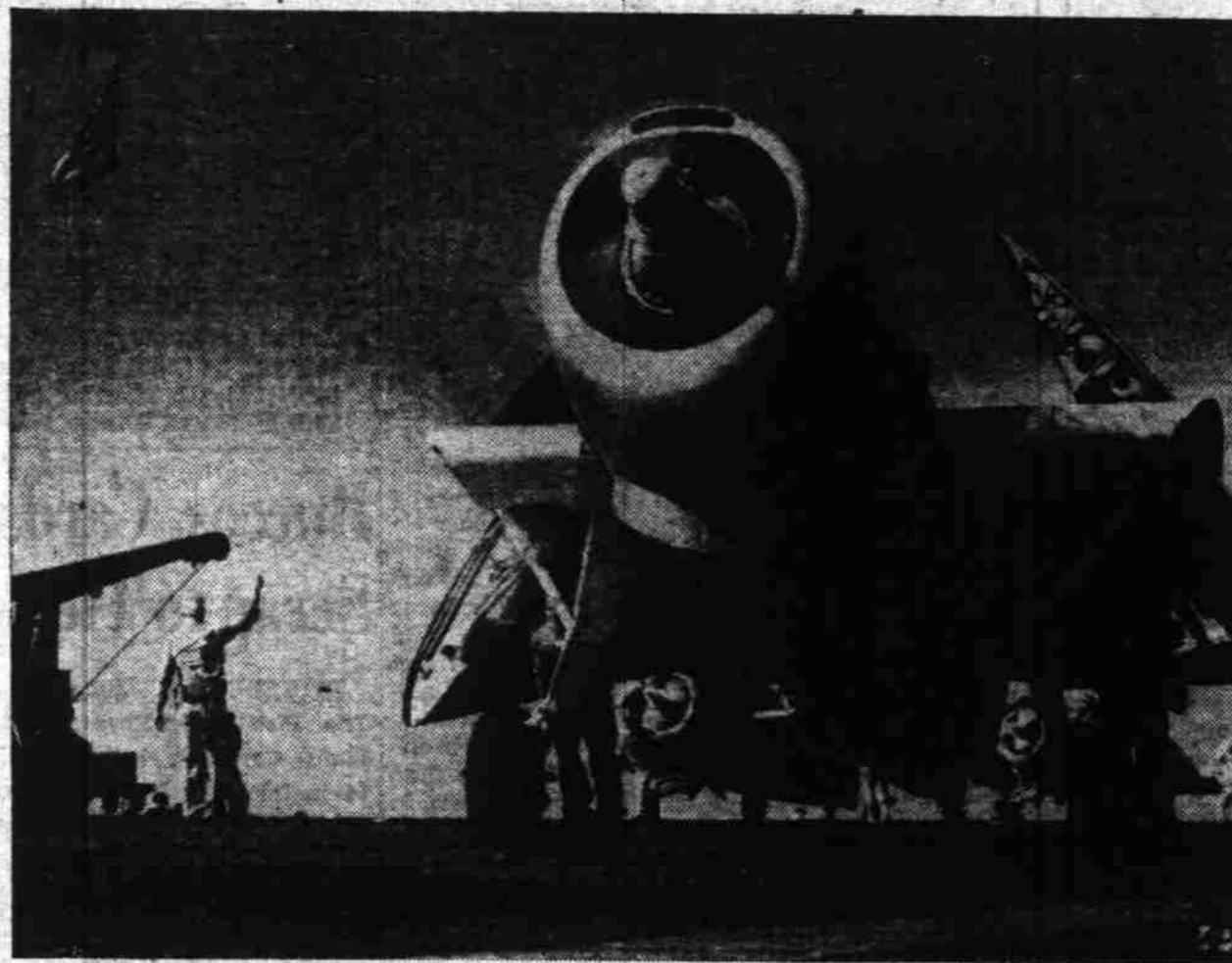
**YOUNG TURKS IN TRAINING.**—Young Turkish officers, taking training at the Army's San Antonio, Tex., aviation cadet center, go through part of the obstacle course.



**PLASTIC WASP IN PLANE.**—This plastic figure of the average WASP, designed by the sculptor, G. W. Borkland, and made of "plastacel," a cellulose acetate plastic, is used to figure internal clearances and seat adjustments in planes for the AAF. The manikin is shown at the controls of a training plane at Chicago municipal airport.



**CASUAL.**—Julie Bishop, film actress, models a casual two-piece dress with feminine long-sleeved blouse styled with a drawstring neckline. The black skirt is shirred with a fitted waistband. Bright colored braid is used to trim both pieces.



**AVENGER'S WHIRLING BLADES.**—On a Navy carrier in the north Atlantic, propeller blades of a Grumman Avenger flash as the engine is warmed up for a mission.



**SILVER SOLDER FOR BOMBS.**—A woman worker in the war plant of Handy & Harman, Detroit, uses a special silver solder on part of an oil bomb dropped by the USAAF to start large fires. Only a tiny amount of silver goes into each bomb, but more than 100,000 ounces have been consumed in this way.



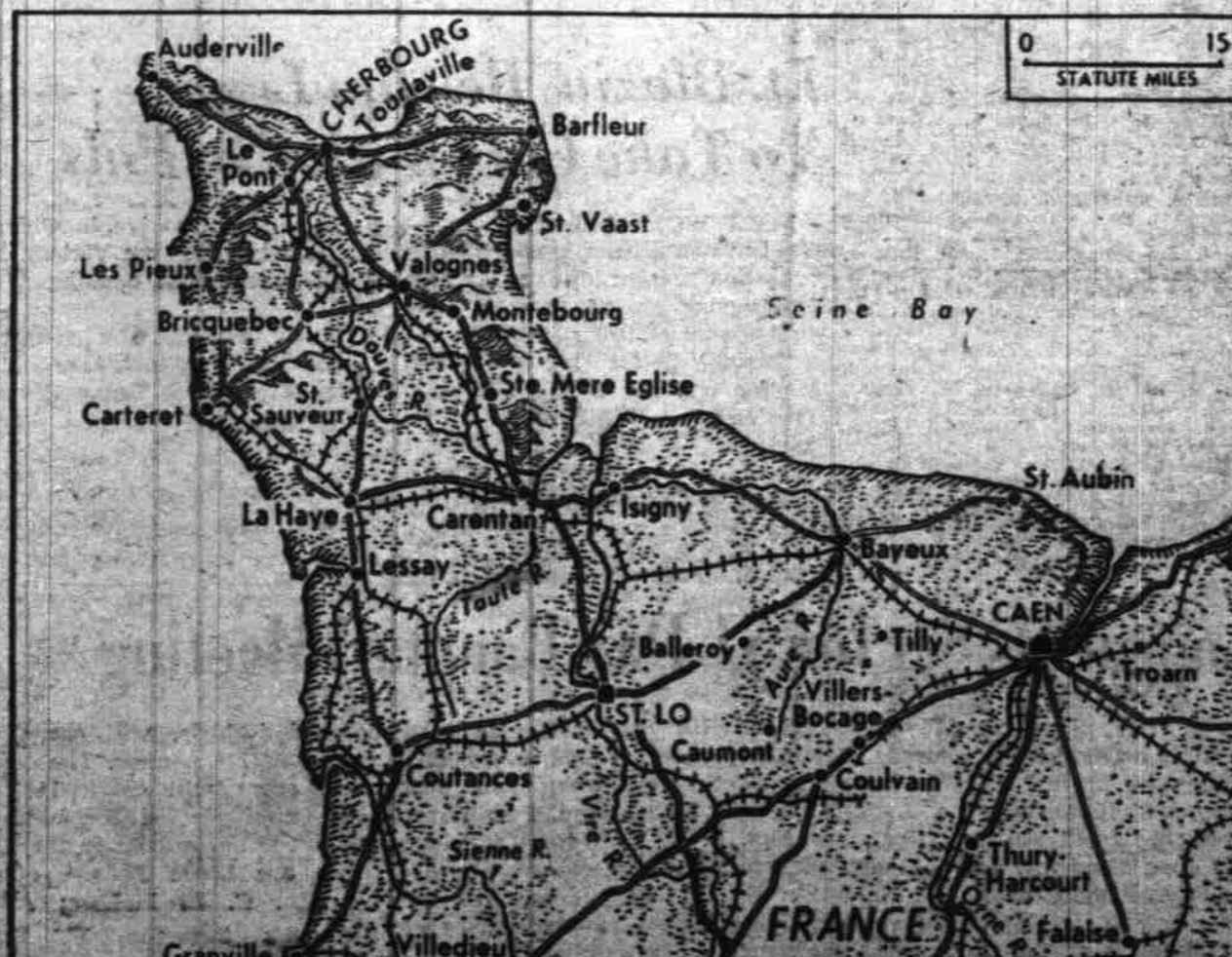
**YANKS DASH ASHORE.**—Somewhere on the New Guinea coast Army troops plunge ashore from the ramps of LCI(L) boats to move another notch closer to Tokyo.



**DINNER FOR SPEAKER.**—Admiral Herbert F. Lett (left) and Gen. Frank R. McCoy, president of the Foreign Policy Association, chat with Speaker Sam Rayburn (right) at a dinner in Rayburn's honor at the Waldorf-Astoria hotel in New York.



**NEWLY WEDDED WELDERS.**—Georgia Carroll, now Mrs. Kay Kiser, watches the hand leader do his stuff with a welding torch on a factory ship in a Cebu yard in California. It was a dual to help the war bond drive.



**NORMANDY BATTLEGROUND.**—This map gives close-up of the Normandy peninsula in northern France, where Allies established first foothold in western Europe.



**LIGHTS FOR MERCY SIGN.**—Lt. Lucille Morris (left) of San Francisco and Lt. Helen Demershus of Park City, Mont., look at lighted Red Cross on new Army transport, Bluebird.