

Students to Give Play Friday

Willamette university drama students are putting the finishing touches on the play "Ladies in Retirement" which will be presented as the annual May weekend play Friday night at the Salem high school auditorium. Tickets are on sale on the campus and will be for sale at the door that night.

Lois Phillips, senior in drama from Klamath Falls, plays the feminine leading role of Ellen Creed, a spinster obsessed with a desire to care for her two insane sisters. Miss Phillips is familiar to Willamette playgoers, having played the leading roles in "Philadelphia Story" and "Arsenic and Old Lace" and taken major parts in "The Comedy of Errors," "Distant Drums," "Yellow Jacket" and "Curse You, Jack Dalton." Last summer she was selected for study at the Priscilla Beach theatre and received favorable reports from there.

The masculine lead and only masculine part in the production is played by Seaman Charles Strong who had a major role in "George Washington Slept Here" presented earlier in the year. Strong is a transfer from Linfield college where he was active in dramatics and played the same role there.

Pat Otis and Phyllis Crowder have the roles of the two insane sisters. Miss Otis is Louisa Creed and Miss Crowder is Emily Creed. Leonora, an ex-actress whose charms have somewhat faded, is played by Joyce Feiden who also appeared in "George Washington Slept Here." Catherine Thomas is Sister Theresa, a nun. Romantic interest is provided by Lucy Gilham, played by Donna Hinckley, and Albert Feather, the role taken by Strong.

Dr. Herbert E. Rahe, instructor in drama, is directing the play. Carola Hays, freshman from Salem, is drama manager. Joyce Feiden is in charge of the art and scenery and Fred Farris heads the construction work. Properties are under the direction of Beverly Cox. Costumes have been secured by Nancy Hoak from the Portland Civic Theatre association and are the same ones as used by that group's production of "Ladies in Retirement."

Poppy Committee To Entertain

Meeting of Capital unit, American Legion auxiliary will be held Monday at 8 o'clock in the Salem Woman's club.

After the business meeting the poppy committee will present a musical program consisting of songs by Mrs. E. T. Barnett who will sing "Song of the Robin" by Anna Case and "The Little Betrothed" by Eleanor Warren. Miss Bernice Kleihege will play selections on the viola and they will be accompanied by Mrs. D. B. Kleihege.

Reports of the poppy committee will be heard in preparation to the poppy sale May 26 and 27. Mrs. E. A. Lee is general chairman of the sale.

The meeting of May 15th will honor the American War Mothers at which time the Junior auxiliary will hold initiation.

Mrs. Mabel Winston, chairman state AAUW radio committee, announces the final series of lectures over KOAC Tuesday afternoon at 2 o'clock. Dr. E. W. Warrington of Oregon State college will act as moderator for the panel discussion and the topic is "Whose World."



Lois Phillips, who plays the lead part in "Ladies in Retirement," Willamette May weekend play. (Kennell-Ellis.)



Seaman Charles Strong, who has the only male role in the Willamette junior weekend play to be presented at the high school auditorium Friday night. (Kennell-Ellis.)

CLUB CALENDAR

MONDAY
American Legion auxiliary at Salem Woman's club, 8 p. m.

TUESDAY
American War Mothers, all day at USO.
Missouri club auxiliary with Mrs. W. G. Walker, 1045 North Summer street, no-host luncheon.

Laurel Social Hour club with Mrs. Vina Kofel, Glenn Creek road, 1:30 p. m., sew for Red Cross.

WEDNESDAY
Royal Neighbors Sewing club with Mrs. Winston Purvine, 1730 North 22nd street, all day meeting, no-host luncheon at noon.

Members Chosen To Seat Officers

Ladies of the Patriarch Millitant met in the IOOF hall Friday night. Mrs. Rose Harland was elected delegate to the state associations of auxiliaries meeting to be held in Portland in May. Those on the team to seat the state officers are Mrs. William Beard, Mrs. Howard Hunsaker, Mrs. Rose Harland, Mrs. Goldie Kyle, Mrs. Lloyd Stuffer and Mrs. Clarence Townsend.

Members of the auxiliary are to meet in the hall Tuesday, May 2, for an all day quilting party. The team will practice in the hall Friday night, May 5.

The Delta Zeta alumnae will be entertained at the home of Mrs. Harry Schenk, 2084 Center street, Tuesday night at 8 o'clock for a dessert supper.

The Navy Mothers social club will meet with Mrs. Don Smith at her home on North 16th street Tuesday afternoon at 2 o'clock. All navy mothers are invited to attend.

Seen and Heard . . .

By JERYME ENGLISH

NAVY ESCORTS for Queen Marjory Mauding and her princesses, Mary Jean Huston and Dorothy Estes, who will rule over the May festivities on the Willamette university campus this weekend . . . The first time a Willamette queen has ever had a navy man for king . . . The chosen three are Kenneth King, John Colthoff and George Ottum . . . Outside of the coronation the biggest thrill for the girls will be when they view the formal inspection of the navy men, which immediately follow the crowning and winding of the May pole . . . So far the queen and her princesses have been able to keep their dresses a secret and hope to surprise their fellow students.

TRIBUTES . . . Home again is Mrs. Thomas Hill, jr. (Ruth Anusend) . . . she has been in Alameda, Calif., with her navy ensign husband . . . Tom is now in San Diego . . . Accompanying Ruth home was Mrs. Jack M. Beth of Los Angeles, whose husband is now in Alaska . . . She plans to stay several months with Ruth . . . Mrs. Beth's sister-in-law is Pauline Betz, the national known women's tennis player . . . When Tom was in Los Angeles the tennis star showed him all around and took him to the various clubs.

Enroute west is Mrs. Julian Witke (Betty Anusend) after being in New Jersey since fall . . . she is headed for Colorado Springs to join her army husband . . . He has been studying at Princeton and Betty completed her work at Brunswick college . . .

Also coming west is Jean David of Washington, DC . . . She is leaving the nation's capitol on Tuesday and is going direct to San Francisco . . . she is driving west with her sister, who is joining her husband in the bay area . . . Jean plans to come to Portland and Salem later in the month . . . She formerly made her home here and is the niece of Admiral Ross McIntire . . .

EASTWARD BOUND are Mrs.

Carl E. Nelson and daughter, Janice who leave tonight for Sacreces, Mary Jean Huston and Dorothy Estes, who will rule over the May festivities on the Willamette university campus this weekend . . . The first time a Willamette queen has ever had a navy man for king . . . The chosen three are Kenneth King, John Colthoff and George Ottum . . . Outside of the coronation the biggest thrill for the girls will be when they view the formal inspection of the navy men, which immediately follow the crowning and winding of the May pole . . . So far the queen and her princesses have been able to keep their dresses a secret and hope to surprise their fellow students.

A BIRTHDAY TEA on Wednesday celebrated the local YWCA's 30th anniversary . . . First board members and past presidents were honor guests . . . In the line, Mrs. Guy Hickok, this year's president, wearing a dusty rose silk crepe gown . . . Mrs. W. E. Kirk, the first board president, in a shell pink crepe dress . . . Mrs. E. Blackerby, Mrs. F. A. Elliott, Mrs. Frank Spears, Mrs. B. C. Miles, Mrs. O. K. DeWitt, Miss Mattie Beatty and Miss Oda Chapman . . . Mrs. Helen Goodenough, wearing midnight velvet and a porcelain gardenia pin at the neckline and earrings to match introduced to the line . . . Dogwood in the hall and reception rooms . . . Crystal candelabras with vases attached holding pink carnations, magnonette and pink tapers . . . Pouring were Mrs. L. H. McMahon and Mrs. A. E. Utley, who both wore black.

A few guests . . . Mrs. Merrill Ohling in a smart emblem red suit with black blouse and black straw hat . . . Mrs. Floyd Miller, who will be leaving Salem in June to live in Portland . . . Mr. and Mrs. Milton L. Meyers . . . she in a navy straw sailor with lighter blue veil . . . Noted Mrs. Prince W. Byrd's white feather sailor . . . Mrs. William H. Burghard's blue silk plaid sailor . . . a navy blue and

white hat on Mrs. Frank Power . . . Mrs. Silas Gaiser wearing navy blue with pink hat . . . and many others.

ROOF GARDEN the theme of the Rainbow sports dance Friday night at the chamber of commerce . . . Beverly Davenport arranged the decorations . . . for the dance she wore a clever green cotton dress with red circles . . . Garden furniture arranged about the hall . . . a striped canopy over the punch bar and lots of garden flowers . . . Clever programs in pastel shades decorated with garden tools and seeds . . . Cotton dresses for the girls and sport shirts for their escorts . . . Katherine Moran wearing a pretty pinatore printed with large clusters of roses . . . Peggy Paxson in a luggage dress with white buttons down the front and large white printed bands on the skirt . . . Marilyn Hjort in a becoming summer red two-piece linen suit . . . Brunette June Young in a pink and white print . . . Marie Ann Newman in white and Betty Zo Allen in green.

A GRAND CLIMAX to the Community concert series this year was the appearance of Helen Traubel, Wagnerian soprano, on Friday . . . She wore a beautiful gown of black sequins fashioned with long sleeves and skirt was of black net, very full and graceful as she walked . . . The neckline was low and her only ornament was a clip on the right shoulder.

The Wacanda Community club met Wednesday at the home of Mrs. W. H. Kraber for luncheon. Five hundred was in play with prizes going to Mrs. Robert Fromm, Mrs. Ernest Andres and Miss Hattie Skelton. Thirteen were present.

Club Proposes City Plan

The Salem Zonta club will support the proposed city manager plan, following a business meeting held at the Golden Pheasant on Thursday night, when favorable action was taken. Mrs. Byron B. Herrick, president of the local club presided.

The Zonta club also agreed to assist the state department of agriculture in securing emergency farm help during the summer. The need for such assistance was presented to the club by Miss Genevieve Morgan, club secretary.

The business session followed a dinner served to the following members, Mrs. Margaret Rogers, Mrs. William Smith, Mrs. Phil Brownell, Miss Katherine Carthew, Miss Edna Lucker, Mrs. Herrick, Miss Morgan, Miss Helen Yockey, Miss Mabel Savage, Miss Dorothy Pearce, Miss Lillian McDonald, Mrs. Lucia Darr, Mrs. Lelace Ellis, Miss Neva LeBlond, Mrs. Rollin K. Page, Mrs. Arthur Hunt and Miss Maxine Buren.

CANTEEN CALENDAR

SUNDAY, APRIL 30
9 to 11—Royal Neighbors of Lake Labish.

11 to 1—Etoika club.
1 to 4—Kiwanis auxiliary.
1 to 7—Oregon State Mothers club.
7 to 11—Roberts Home Ec club.

MONDAY, MAY 1
First Presbyterian church group.

TUESDAY, MAY 2
Silverton group.

WEDNESDAY, MAY 3
Junior Guild.

THURSDAY, MAY 4
Hollywood Lions auxiliary.

FRIDAY, MAY 5
First Congregational church.

NEW DENTAL PLATES HAVE ENDURING AND LIFELIKE QUALITIES—

Controlled delicate color, resiliency and stability distinguish the material now used by dentists in making dentures.

DR. PAINLESS PARKER SAYS:



"The research of the laboratory technician and the skill of the dental profession have been combined in the production of more realistic plates. It is possible today to obtain dentures that are lighter in weight, yet of tested durability. They have a beauty and grace of design, plus color tones that harmonize with individual features."

PAY FOR PLATES AS YOU WEAR THEM, BY THE WEEK OR MONTH

You can avoid much of the discomfort and embarrassment caused by clumsy, ill-fitting dental plates by investing in those made from refined translucent material. This material offers more faithful reproduction, insures you plates with greater wearing efficiency. With Accepted Credit you can determine these advantages by paying as you wear them. Plates have gums that match your own and a clear palate that reflects the mouth tissues. They are difficult to detect. Budget payments in the way that best suits your convenience.

Translucent Teeth Give Lifelike Effects

Natural tooth characteristics are preserved for dental plates with translucent teeth. These improved artificial teeth absorb and reflect light as do your present teeth. In surface markings, outline, texture and hue, translucent teeth closely resemble natural ones. You can select teeth in the size and shade of human ones.

Start Dental Work Immediately PAY LATER

Make payments with Accepted Credit. Make your first dental visit without an appointment for fillings, inlays, bridgework, crowns, plates, extractions.

Unless missing teeth are replaced, cheeks become hollow, facial muscles slack, and your features are distorted.

Industry counts costs of accidents and illness among workers

A figure of ten billion dollars is quoted as the estimated loss in time resulting from illness and disability. Tooth neglect and focal infections lead to serious illness.

NEW STYLE DENTAL PLATES ON TERMS TO SUIT YOU

BUY MORE WAR BONDS AND STAMPS

DR. PAINLESS PARKER, Dentist

125 LIBERTY ST. CORNER STATE
TELEPHONE SALEM 8825

Other Offices in Eugene, Portland, Tacoma, Spokane, Seattle And in All Leading Pacific Coast Cities

MONTGOMERY WARD

YOU'LL ALWAYS

FEEL FRESH IN A

spun rayon

It's so downright smart — so crisp and clean-cut.

You can wear your spun rayon dress from the start to the end of a long, hot day, without losing

that band-box look! You'll probably want

more than one! So how about a two-

piece style and a one-piece classic?

Prints, solids and combinations.

Sizes 9-15, 12-20.



7.98

4.98

Fabric bow pump in red or white! 1.98

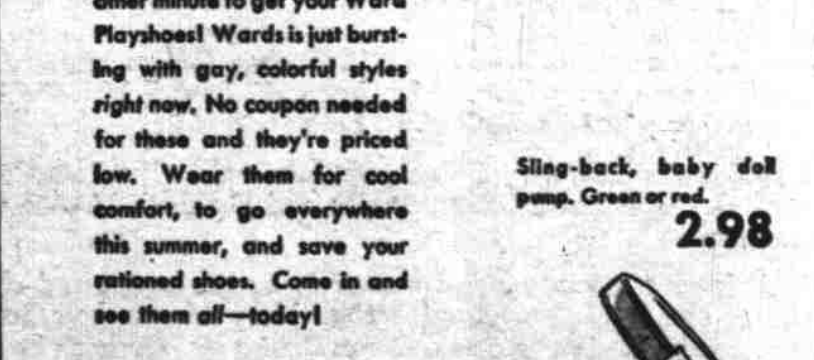
NOT RATIONED



Ballerina tie in red or multi-color 1.98

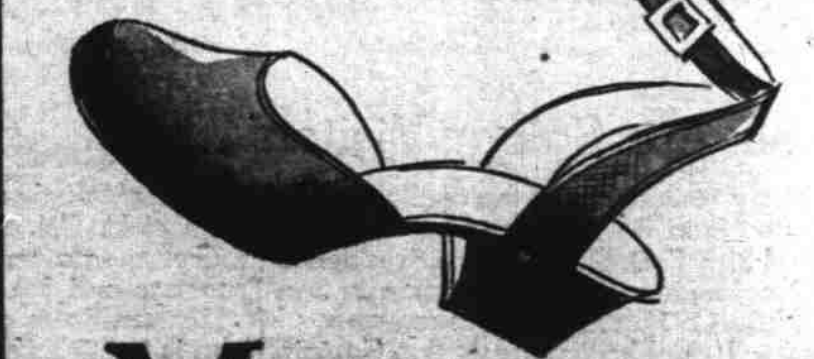


Wheat fabric oxford. Open back and toe. 2.98



You don't need to wait another minute to get your Ward Playshoe! Ward's is just bursting with gay, colorful styles right now. No coupon needed for these and they're priced low. Wear them for cool comfort, to go everywhere this summer, and save your rationed shoes. Come in and see them all—today!

Slip-back, baby doll pump. Green or red. 2.98



Montgomery Ward

155 N. Liberty Phone 3194

Give Her a special "combination package" of fragrant Bath Preparations by Bendel

Most welcome, most enchanting of feminine gifts! Beautifully wrapped, aglow with ribbons and flowers, even the most modest package is an expression of your good taste . . . sincerely flatters the recipient!

Variety of "combinations" . . . Bendel Soaps, Toilet Water, Body Sachet, Dusting Powder, Bath Oils, Bath Mitts, Eau de Sachet.

Exclusively in Salem At

SALE'S

Cor. Court & Liberty . . . Salem