

**Bombs Smash Japs Close to Finschhafen**

By OLEN CLEMENTS  
 ALLIED HEADQUARTERS IN THE SOUTHWEST PACIFIC, Saturday, Oct. 23—(P)—Many Japanese soldiers were killed and their jungle defenses levelled Thursday by a record weight of 221 tons of bombs dropped by Liberators assaulting the impervious positions northwest of Finschhafen, New Guinea, from which the enemy is making frantic efforts to escape entrapment.

This fiery aerial assault was directed at the Sattelberg Mission area where the Japanese in considerable force are attempting to avoid the peril presented by Australian forces on two sides.

The bomb blasts at troop concentrations was deadly and Australian soldiers reported after the raid they had seen many Japanese bodies.

The resultant explosions and fires virtually levelled the enemy-occupied area.

Reinforcements which the Japanese painstakingly had moved from the north through the jungles were hit heavily by the Thursday raid, made in daylight by a considerable force of Liberators.

Even so, the growing battle was expected to assume still larger proportions in a triangular sector, five miles in length, chosen by the Japanese for the operation.

The bomb weight, particularly large when the almost pinpoint target is considered, was the heaviest ever unloaded in a single day's attack on New Guinea although it was exceeded by the 350 tons dropped on the much larger target of Rabaul, New Britain, October 12.

In the past such pulverizing air assaults by General MacArthur on New Guinea jungle defenses have preceded land operations of moment. As an instance, Japanese headquarters were demolished by a concentrated air attack on Lae shortly before MacArthur began the pincers drive which won him that air base.

Any Japanese reinforcements for their impervious Sattelberg force from the north would inevitably have to come either from or by way of Madang, itself presently threatened by an Australian force moving up the Ramu valley to the northwest of the Finschhafen ground scene.

The enemy reinforcements at Sattelberg are believed to have been intended originally for the strengthening of the Finschhafen garrison. But before they could arrive, that coastal base nearest the enemy's key stronghold of New Britain was captured October 2 by Australians.

Falling to get to Finschhafen, the next logical step of those reinforcements was Sattelberg where they apparently dug in.

They probably hope to stem the allied northward push in that sector but evidently expect to be driven out eventually and are trying to keep an avenue to the sea open. Military reports indicate only a small force of Japs is defending the road to the sea.

The record bombing exceeded the previous high mark of 206 tons dropped in September on Madang.

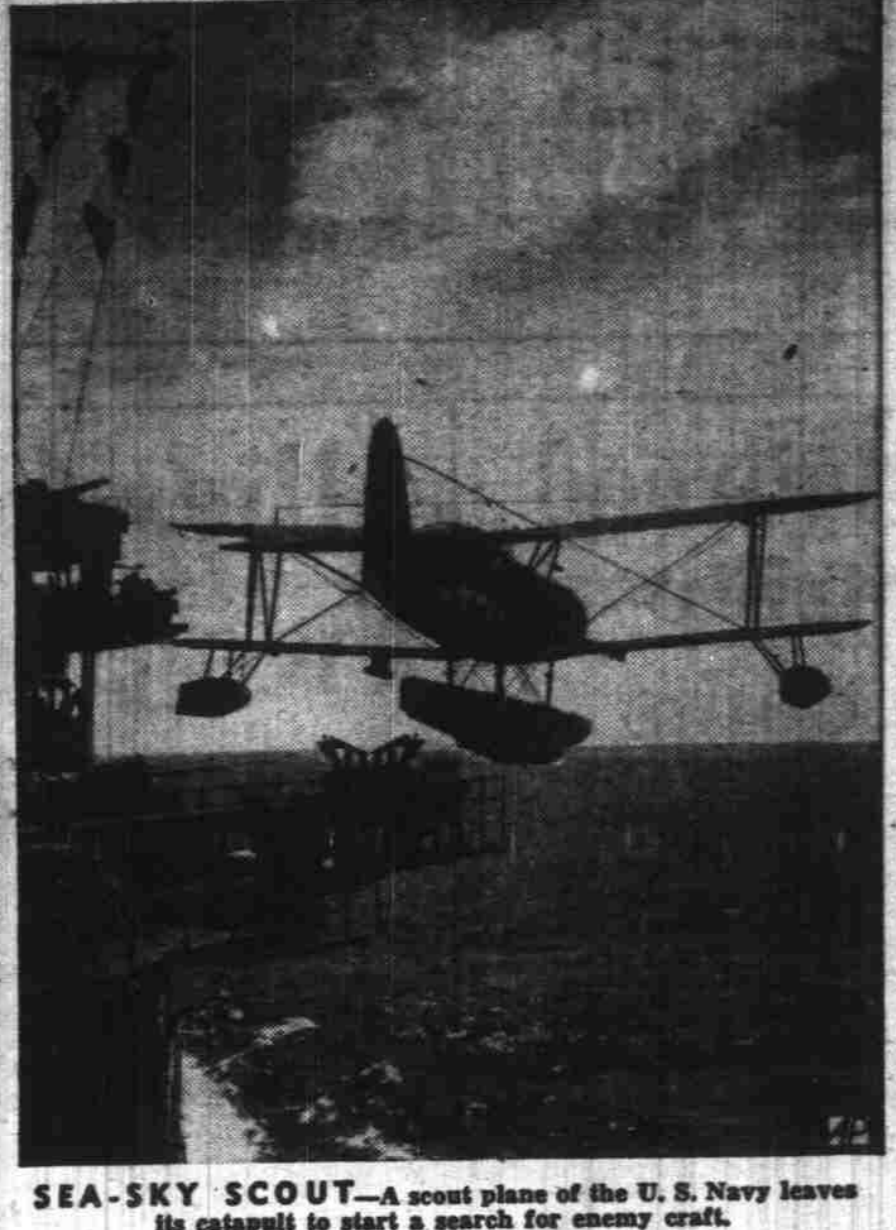
**Reclamation Would Give West Another 25 Million Acres**

DENVER, Oct. 22—(P)—Predicting 50 years of post-war reclamation work in the western states, O. S. Warden, president of the National Reclamation association, said today that if the west is provided with sufficient irrigation projects it can place an additional 25,000,000 acres into food production.

"The future development of reclamation projects will be far more important than anything attempted in the last 30 years," Warden told interviewers.

He said that the 17 western reclamation states are the only lands where farm acreage can be greatly increased.

Warden, Great Falls, Mont., publisher, will preside over the association's annual meeting October 27-29.



SEA-SKY SCOUT—A scout plane of the U. S. Navy leaves its catapult to start a search for enemy craft.

**Army Urges Postwar Dams For Northwest**

WASHINGTON, Oct. 22—(P)—Army engineers and house members from Oregon and Idaho urged the rivers and harbors committee today to approve for construction after the war a series of dams and power developments on the Columbia and Snake rivers in Washington, Oregon and Idaho to cost approximately \$80,000,000.

Col. Peter A. Fering, representing the engineers, recommended construction of the Umatilla dam on the Columbia river as the first step in the development of the rivers. It would cost approximately \$50,000,000 with mean of developing power and \$23,700,000 without power. He also recommended construction of four dams on the Snake river at a cost of \$30,000,000.

Representatives White (D-Ida), Angell (R-Ore) and Stockman (R-Ore) urged the committee to approve the plan. The Oregon representatives joined White in urging approval of the Snake river dams in Idaho to carry navigation to Lewiston, Idaho, and open to water transportation a huge inland territory now without transportation.

White told the committee the development would make possible the shipment of minerals, lumber, grain and other commodities to tidewater.

He said construction of the dams on the two rivers would create additional power of approximately a billion kilowatt hours a year and that the two rivers had the greatest potential power of any rivers in the nation.

Stockman declared that people of Oregon were unanimous in wanting the Umatilla dam and those on the Snake river constructed.

Angell said that the development proposed by the engineers would open up a new empire which would produce wealth for the entire nation.

**3-Power Talk Said Veering**

F (Continued from Page 1) F  
 Klement Y. Voroshilov, commander of Russian forces in the far east; Vice Commissioner for Foreign Affairs Andrej Vishinsky; Vice Commissioner for Foreign Trade Maxim Litvinov; and V. A. Saksin of the foreign office.

American and British military advisers attended yesterday's four-hour session. It was announced, however, that the names of those attending future daily talks would not be announced.

Hull and American and British correspondents met informally this morning, and the American diplomat appeared to be in good health.

**Snell Names Committee**

B (Continued from Page 1) B  
 executive secretary Federated Jewish societies, Portland; Mrs. Harry H. George, jr., member of Portland school board and vice-president Oregon Congress of Parents and Teachers; George Sheviakov, assistant superintendent Vanport schools in charge of guidance and counsel.

Dr. Herman A. Dickel, psychiatrist and consultant of the Oregon state parole board; Dr. John L. Haskins, Portland, chairman advisory council court of domestic relations; Mrs. Frank W. Blum, Portland, president Oregon Congress of Parents and Teachers; Mrs. George R. K. Moorhead, Salem, president state federation of women's clubs; Daniel M. McDade, state commander, American Legion, Portland.

Mrs. Frank Von Borstel, president American Legion auxiliary, Grass Valley; Morton Tompkins, master Oregon state grange, Dayton; Ernest Baker, president state CIO, Portland; Evan Sax, president Portland high school student body association, Portland; J. D. McDonald, president state AFL federation, Portland.

Miss Eida Russell of Portland, former superintendent of the Oregon Hillcrest home for girls, was appointed chairman.

**New Tax Bill Decided On**

D (Continued from Page 1) D  
 The program is as follows:  
 1. Repeat the victory tax.  
 2. Increase the normal tax rate from 6 per cent to 10 per cent.  
 3. Disallow the earned income credit.  
 4. Permit married persons filing separate returns each to take only a single person's exemption.  
 5. Provide that no tax shall be less than 3 per cent of the net income in excess of a personal exemption of \$500 for single persons, \$700 for married persons and a credit for dependents equal to \$100 each.

(Item 5 applies to persons who do not have earnings sufficiently large to come under the regular income tax but who now are affected by the victory tax. Persons affected by the income tax pay the treasury no less than the three per cent with the exemptions stipulated in item 5).  
 The present victory tax exemption for both married and single persons is \$624. The fact that exemption mentioned in item 5 is \$500 for single persons means that some people who do not have to pay victory taxes now would be taxed under the new plan.  
 The committee made no change in the present exemptions under regular income taxes, which are \$500 for single persons, \$1200 for married persons and \$350 for each dependent.

**Reich Bombed For 3rd Big Raid of Week**

I (continued from Page 1) I  
 handful of planes set the streets going soon after blackout in the earliest alarm of many months. Searchlights and guns went into action immediately but a few raiders managed to drop flares and bombs in one urban district and in one suburban area.

Two persons were killed, several seriously injured and others feared trapped when nazi bombs demolished several houses in a working class district of London.

The German raiders also dropped bombs at four places in southeastern and southern England as they fanned out singly over a wide area.

RAF Typhoon bombers with an escort of Spitfires dived through openings in the clouds over Tricqueville, France, late today, and they also encountered no fighter opposition, although light anti-aircraft fire was reported.

A 24-hour pounding of nazi targets had started with an RAF Mosquito sweep into western Germany, the fourth in five nights.

RAF Spitfires, besides accompanying the Marauders, carried out a number of sweeps and met increased enemy action, however. They shot down eight nazi planes for a loss of one Spitfire.

Returning crewmen reported extensive damage done at the Evreux-Fauville airbase. They left a hangar flaming and numerous fires among other buildings, and also hit runways, dispersal areas and parked enemy aircraft. All the bombers returned safely, keeping their Marauder losses to 13 in 77 missions.

The remarkable lack of opposition to the Evreux-Fauville attack—it was the Marauders' first flight after two weeks of bad weather over the continent—did not mean that the German air force is so low that it could not put up any resistance.

The phenomenon was taken to indicate, however, that the German air force, with intensified attacks on more fronts to cope with, is so hard-pressed that the nazi strategists consider it not worthwhile to risk precious planes in defense of secondary targets.

**Chinese Battle Against Jap Encirclement**

By CLYDE FARNSWORTH  
 CHUNGKING, Oct. 22—(P)—Outnumbered Chinese forces, clinging to precarious positions west of the Salween river near the Burma border, battled desperately tonight against an encircling movement by Japanese forces officially estimated at 30,000.

The Japanese columns, already tripled in number since the beginning of the Yunnan province offensive three weeks ago, have received further reinforcements and are also gaining in air support for the first time since the battles flared on the mountainside frontier of southwestern China, tonight's high command communique said.

The Japanese, however, have been unable to show new advances in fighting at two points west of the Salween—at Lichaiphah and Chaikungfang—while the enemy force moving northward opposite Luku was being held in the area south of Lusu where a "furious struggle" was continuing.

**Allies Capture Towns in Italy**

G (Continued from Page 1) G  
 Fifteen enemy fighters swarmed up to attack a formation of Marauder medium bombers that was hammering a railway bridge at Acquapendente, 55 miles northwest of Rome, but escorting Lightnings knocked down six of the attackers and drove them off.

RAF Beaufighters, protecting an allied convoy off the North African coast, shot down four German bombers. In all, 17 German planes were officially reported destroyed in the day's engagements against a loss of one allied craft.

**ON the HOME FRONT**  
 By ISABEL CHILDS

There is no such thing as mother-in-law trouble—at least not in the accepted sense of the term—opines Marion Bowen, Marion county welfare administrator. Perhaps the much-publicized trouble is of the daughter-in-law variety.

More men take into their homes their parents-in-law than their own parents, says she from her experience in attempting to adjust available county, state and federal monies to old age assistance and general welfare needs.

Likewise, declares Miss Bowen, the percentage of single women who support their parents is far larger than that of single men.

No explanation is attempted by the welfare administrator—at least not to me.

But our Maxine Buren declares that if I were a student of sociology I would understand that the system is "natural." The daughter keeps house as she learned to do it at home, uses the recipes handed down from grandmother to mother, etc., and the parents are just naturally more comfortable in her home than with a daughter-in-law.

It's a good explanation, but that part of my education gleaned from newspaper humor leads me to suggest that some of the sons who are reputedly always screaming about "how mother used to cook it" should welcome their own parents into the family circle if food and housekeeping are the bases for selection.

**Nazis Claim Badoglio Tried Kidnap Hitler**

By E. C. DANIEL  
 LONDON, Oct. 22—(P)—The German high command charged today that King Vittorio Emanuele and Marshal Badoglio of Italy had plotted to lure Adolf Hitler to Italy, kidnap him and turn him over to the allies along with Benito Mussolini.

Quoting Italian military "documents," the high command charged that Marshal Badoglio had invited Hitler to Italy to confer with him and the king.

"The invitation was refused coolly," said the German news agency in a broadcast recorded by the ministry of information. "It came at a time when the handing over of the duce was decided and sealed. Today it is known that the king and Badoglio arranged with the enemy to place into his hands the Fuehrer as well as the duce."

According to Berlin's statement today, Hitler was invited to Italy by the Italian military attaché in Berlin acting in the name of the king and Badoglio. "It is obvious," said Berlin, "that the invitation was given to the Fuehrer in order to trap him.

**Russian Trap Imperils Nazis**

E (Continued from Page 1) E  
 Although Hitler and German propaganda outpourings indicated at the time of the Italian capitulation that the move came as a surprise to Germany, the high command statement asserted that the German government became aware as early as August 15 of Marshal Badoglio's intentions. The surrender was announced September 8.

The new red army smash blow Poryaslav came many days after the Russians announced they had established a bridgehead there across the Dnieper. The fighting apparently had subsided until yesterday when the Russians gathered an important tank force and launched a drive which may strike west toward the Bug river, aim at the lateral railroads connecting German defense fronts, cut north to further flank Kiev, or southward to back up the Dnieper bend drive.

More than 1500 Germans were held inside Melitopol's battle-wrecked and flaming streets, the Russians said.

**US-British Alliance**

LAWRENCE, Kas., Oct. 22—(P) Alf M. Landon, insisting that "world collaboration and cooperation should mean all nations," said today any proposed British-American alliance "is joint isolationism."

"A mere alliance with one imperialistic country means a partnership of the strong against the weak," he said in an address for delivery at the University of Kansas Debate Institute.



VETERAN PATIENT—William Backhouse, 25 (above), cheerfully claims the title of "most injured man alive." A lumber worker, he was crushed by a tree in New South Wales three years ago, suffering three spine fractures, 18 broken ribs, crushed shoulder, broken arm and paralyzed legs. Now in a Sydney hospital, he hopes to walk in five months.

**Sights Raised In Chest Drive**

C (Continued from Page 1) C  
 cred Heart academy are expected to report Monday.  
 Josephine Albert Spaulding sang three numbers at the Friday luncheon with Alice Cray Brown accompanist.

**National Rail Strike Looms**

H (Continued from Page 1) H  
 The new mine walkouts coincided with a darkly pessimistic report by a Washington official on the fuel outlook. Howard A. Gray, deputy solid fuels administrator, told a senate committee that coal production this year would fall 15,000,000 tons behind production and necessitate drawing on stockpiles.

**Jams, Jellies Frozen; Ration Starts Oct. 31**

A (Continued from Page 1) A  
 and an order suspending all sales is necessary in order to prevent their complete disappearance from the retail market."  
 During the eight-day retail freeze stocks from the 1943 pack will be moved from processors to wholesalers and then to retailers, so that supplies will be adequate when rationing is begun.

OFA had not planned to impose the freeze until Saturday midnight, but reports reached Washington that the plans had leaked. In order to prevent a disastrous run on about 15,000,000 pounds of the foods on retail shelves, the freeze was ordered into effect at 12 o'clock.

The order temporarily halts sales to industrial and institutional users as well as to housewives. Industrial users include bakeries, confectioneries, ice cream manufacturers and others. Hotels, restaurants, hospitals, prisons, and clubs are included in the institutional grouping. However, industrial users and restaurants may use the stocks they have on hand during the freeze.

**Shumaker Has Stroke**

JEFFERSON—Grant Shumaker suffered a slight paralytic stroke at his home on Ferry street, Wednesday. His right side was affected. His sister and niece, Mrs. V. D. Looney and Mrs. Frances Nebergal, came from Albany Thursday morning to take him to Albany.

**ELSINORE**  
 NOW... *WALTER DICK* original songs  
*Boyd - Carter - Davis*  
*Ashland - Ryan - Garfield*  
*Leslie - Lepino - Morgan*  
*Sherran - Shaw - Smith*

**THANK YOUR LUCKY STARS**

"MURDER ON THE WATERFRONT" with John Leder - Ruth Ford Mickey Mouse Matinee 1 P. M. Plus Serial "Adventures Flying Cadets"

**LAPITOL**

**Starts Today—Super Double Bill**

It's all a lot of fun!  
 (in fact it's the funniest picture of the year!)  
 —With a Load of Hair Raising Laugh Raising Gags!

**DOROTHY LAMOUR**

**THEY GOT ME COVERED**  
 COMPANION FEATURE

**BATAAN**

SEE—the most authentic fighting scenes ever brought to the screen!...

**THE MOVING JAP FOREST!**  
 From the eerie depths of a tropical jungle a "forest" advances against the defenders!...

**THE BRIDGE OF DEATH!**  
 American soldiers blast the bridge to delay the Jap advance!...

**BOMBING OF MANILA!**  
 An open city falls prey to the inferno of Jap bombs from the sky!...

starring **ROBERT TAYLOR** as Sergeant Bill Danes with **GEORGE MURPHY**  
**THOMAS MITCHELL** **LLOYD NOLAN**  
 LEE BOWMAN ROBERT WALKER DESI ANNAZ



'JEEP' UNDER B-24'S WING—Nesting under the wing of a Liberator bomber, the one-ton "flying jeep" is the smallest military aircraft built by Consolidated Yulcan, as the B-24 is the largest. The "jeep" is built at Wayne, Mich.

**THANKS**  
 To the Good People of Salem and Vicinity for the splendid patronage given our new dining service  
**WE WILL BE CLOSE ON SUNDAYS TO ALLOW A DAY OFF FOR OUR EMPLOYEES**

Dinner served each week-day, 5 to 7:45 p.m.  
 Cafeteria service, 11:45 to 1:30 P. M.

**ARGO DINING ROOM**  
 341 CHEMUKETA STREET