

Wheat Makes Minor Gains

Late Rally in Rye, Oats, Lifts Cereal Out of Earlier Losses

By WILLIAM FERRIS CHICAGO, Oct. 22 (AP)—A late rally in rye and oats, helped along by short-covering, put some life into a grain market which had drifted lower in moderate trading most of the session today.

At the finish wheat was unchanged at 1/4 higher, December \$1.54 1/2. May \$1.53 1/4, rye was 1/2 cent higher, December \$1.12 1/2, oats were up 1/4-1/2 and barley was ahead 3/4.

After Long Journey Letter Returns at Last

BATON ROUGE, La. (AP)—Capt. Guy W. Nesom, special services officer at Harding field, wrote a half-page letter last June to Morrison field, West Palm Beach, Fla., about a soldier who forgot to return a book to the base library.

The letter followed the soldier overseas, then to a training wing and then to the headquarters of Gen. Jimmy Doolittle, commanding general of the north African strategic air force.

The general's adjutant forwarded the letter to the proper wing, which sent it to the proper group, which sent it to the proper squadron—which in- dorsed it with the information that the cost of the book would be deducted from the soldier's pay.

After traveling back through the same channels, the letter finally arrived back at Harding field.

What You Buy With WAR BONDS

Boobies For The Japs

U. S. Raiders and Australian Commandos have been using a new technique to push Japanese land forces out of Oceania. It involves hiding booby traps in the vicinity of Japanese jungle troops and then enticing them to pursue opposing fighters. Your War Bond purchases will help thousands of these weapons to keep our fighting men achieve eventual victory.



Larger land mines are used in fighting tanks and heavier mobile equipment but must be furnished in large quantities ready for instant use when occasion demands. Figure # out yourself.

U. S. Treasury Department

Strictly Private



DEAR MOM:-- I ASK THE SARGE ABOUT GETTING OFF TO GO HOME & GET MARRIED... HE ASK ME WAS IT ESSENTIAL TO THE WAR EFFORT. I HAD TO TELL HIM NO, BUT I THINK THIS ONLY A WAY OF STALLING YOUR SON

Stocks Climb At Slow Pace

List Shows Steadier Tendencies as Oils Regain Equilibrium

By BERNARD S. O'HARA NEW YORK, Oct. 22 (AP)—Led by yesterday's stumbling oils, utility preferreds, selected rails and industrial specialties, the stock market moved into recovery ground today although at a relatively slow pace.

The list displayed steadier tendencies at the start as the oil group began to regain its equilibrium. At the close a number of favorites were at new tops for the year.

Oils came back when underwriters who had arranged with John D. Rockefeller, jr. to sell 1,000,000 shares of his Standard Oil holdings to the public next Monday announced that the sale had been postponed. Proceeds of the offering were to be used by Mr. Rockefeller for the purchase of war bonds, it had been previously stated. Reasons for calling off the distribution were not forthcoming.

The Associated Press 80-stock average was up 2 of a point at 50.7. Transfers totaled 560,400 shares compared with 591,490 the day before.

Issues at best levels for 1943 included American Distilling, Allied Mills and senior stocks of Electric Power & Light, Commonwealth & Southern and Standard Gas.

I Bombed Japan Club Formed in Aleutians

ADAK, Aleutians (AP)—The "I Bombed Japan" club has been organized by 74 officers and men of the army's eleventh air force and membership is open to allied airmen participating in bombing missions over Japanese territory.

Charter members have been on raids from Aleutian bases on the Japanese base at Paramushiro. Last year's Doolittle raiders will be asked to join.

Officers are Maj. Louis Blau, 584 1/2 Ernest avenue, Los Angeles, president; Maj. Frank Gash, 355 Pine avenue, Fresno, Calif., vice president; Maj. C. G. Wagner, 143-0 Seven Oak avenue, Flushing, Long Island, secretary treasurer.

Beauty Spot Turned Into an Apron

ALEXANDRIA, La. (AP)—Mars has won another victory over the followers of Venus in this theater of war.

When romantic, willow-bowered Bayou Rapides threatened to interfere with the growth of the Alexandria air base, army engineers went to war.

Now they are busy moving the Bayou bed one half mile south of its old location, cutting at 3800-foot channel to drain the area and filling the old bed with the earth from the new channel.

The work will give the airport 240 acres for additional apron, runways and taxiways.

Phillips Family Moves to Lincoln

LINCOLN—Newcomers in the Lincoln community are Mr. and Mrs. Harry Phillips, who have purchased the James Remington farm. They formerly resided at West Salem.

Mrs. Lois Crawford has been a guest this week at the home of her brother-in-law and his wife, Mr. and Mrs. E. C. Crawford of Salem, leaving Friday.

Monday's Radio Programs

Table listing radio programs for Monday, October 23, 1943, including stations like KSLM, KOIN, KGW, and KXII.

Hops Better Than '42 Crop

By the Associated Press Oregon's hop crop will total approximately 12,000,000 pounds this year—slightly more than last year but substantially below the 1932-41 average.

State markets maintained a firm tone for the week ending October 20, with dealers bidding full ceiling prices on 1943 supplies still in growers' hands.

Baling of the 1943 crop was practically completed and deliveries were made rapidly with eastern shipments moving in good volume.

is recovering from a tonsil operation. He is senior at Salem high and missed a week of school.

LOANS For Budget Balancing... State Finance Co. Telephone 8168. 212-223 Guardian Bldg. Corner Liberty & State. Lic. 8-216 M-232.

Quotations at Portland

Portland Produce: Cauliflower—No. 1, 2.00-2.25 crate; No. 2, 1.25-1.50 crate. Celery—No. 1 green, 3.00 crate; No. 1 white, 4.00 crate; root 75-80 dozen; hearts 1.20-2.00 dozen bunches.

Portland Livestock: Cattle—Salable 25, total 35; calves, salable 25, total 35; market mostly nominal; few clean-up sales steady; week's top steers 14.75; common and cutter cows today 5.00-6.00; shelly cows down to 4.00; common to medium bulls 8.00-9.00; common to medium and cutter cows today 5.00-6.00; shelly cows down to 4.00; common to medium bulls 8.00-9.00; common to medium and cutter cows today 5.00-6.00.

Portland Grain: Wheat: Futures unquoted. Cash wheat (bid): Soft white 1.38; soft white excluding Rex 1.41; white club 1.41 1/2; western red 1.41 1/2; hard red winter: Ordinary 1.38 1/2; 10 per cent 1.40 1/2; 11 per cent 1.42; 12 per cent 1.44; 13 per cent 1.45.

East Side Market: Portland, Ore., Oct. 22 (AP)—Top quality tomatoes shot up to a new high of \$1.50 a flat on the East Side wholesale market today. Regular grades moved rapidly at \$1.50. Cauliflower also spurred to a high of \$2.25 a crate, and The Dalles lettuce was in heavy demand at \$3.50 a crate.

Salem Market Quotations: The prices below supplied by a local grocer are indicative of the daily market prices paid to growers by Salem buyers—but are not guaranteed by The Statesman.

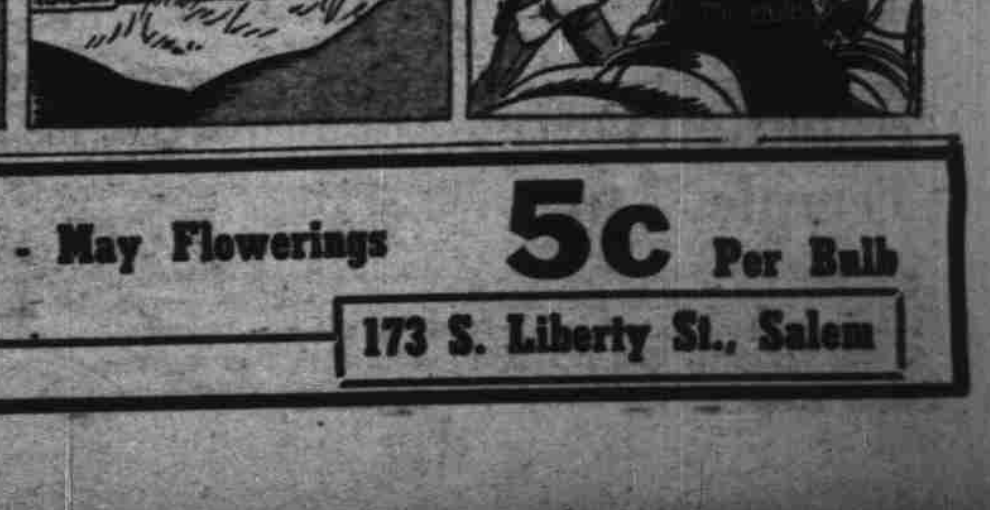
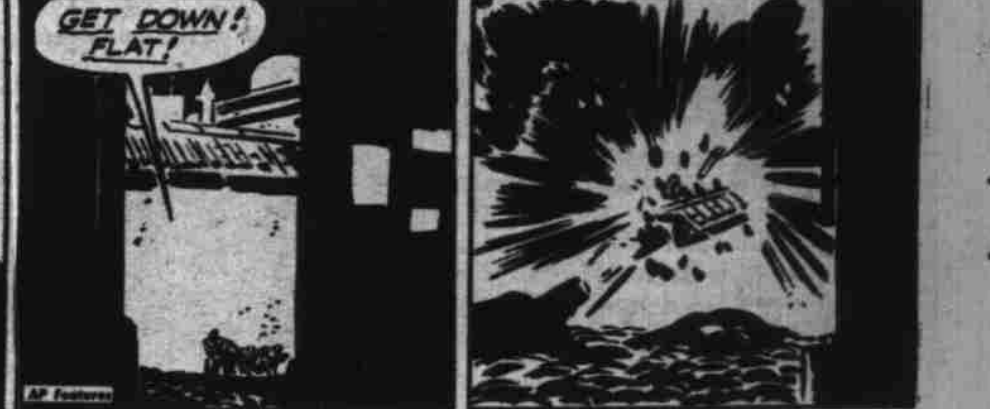
Table of market quotations for various produce items like cauliflower, celery, tomatoes, etc.

Stocks and Bonds

Table showing stock averages for October 22, 1943, including Industrial, Utility, and Foreign stocks.

WANTED! CHURNING CREAM AND EGGS. HIGHEST CASH PRICES. Curly's Dairy. Fairgrounds Rd. at Hood. Phone 5753.

Eggs Wanted. Top Prices Paid! Prompt Remittance. Ship or Bring Your Eggs to FRED MEYER EGG DEPOT. 331 S. E. Alder St. Portland, Ore.



TULIPS Giant American Grown - May Flowerings 5c Per Bulb. Sears Farm Store. 173 S. Liberty St., Salem.

MARCH AND FAMILY—Freddie March is pictured with his family just before he left on a USO-sponsored trip to the Middle East. Left to right: Tony, 9; March; Mrs. March (Florence Eldridge); and Penny, 16.