

Market Stages Strong Rise

Rails, Utilities Lead Early Buying Pace; AP Average Up .4

NEW YORK, April 15 (AP)—The stock market extended its recovery bulge by a comfortable margin Thursday, although profit realizing on the drive clipped many initial gains ranging from 1 to 2 or more points.

Rails and utilities easily were leaders at the start, with 1000 to 9000-share blocks appearing in these groups. Bidding eventually switched to industrial specialties, including liquor, amusements and chemicals. While scattered losers were in sight at the close, modest advances were well in the majority.

The transportation section wavered when Southern Pacific directors took no action on a dividend at their meeting today but steadied before the finish. The power and light division lost a sizable portion of morning improvement. Steels, motors and coppers generally were without a great deal of vigor.

The Associated Press average of 60 stocks finished with a net gain of .4 of a point at 48.4. It was a broader market than that of Wednesday, 924 individual issues being traded. Of these 598 were up, 149 down and 177 unchanged. Transfers totaled 1,391,520 shares against 1,085,370 the day before.

In the stock department new tops for the year or longer were reached by International Telephone, Norfolk & Western and Schenley.

Airline Traffic Shows Increase

Civilian and military air traffic combined to boost total passenger travel on United Air Lines by 12 per cent in March compared to March, 1942, it was announced Thursday by W. T. McIntyre, local station manager.

United's Mainliners flew more hours per month, thanks to an outstanding maintenance job made possible by top priorities on new engines, propellers and other replacement parts. Revenue passenger miles flown totaled 27,088,000. Air express and air mail pound miles flown also showed large increases.

Stocks and Bonds

Table with columns for Stock Averages (30, 15, 10, 5) and Bond Averages (20, 10, 5). Includes sub-tables for Railroads, Utilities, and Stocks.

Table titled 'No. 12-7' showing financial data for the Pacific Coast Fire Insurance Company of Vancouver, British Columbia, on the thirty-first day of December, 1942.

"Strictly Private" By Quinn Hall



DEAR MOM—MURIEL ARRIVED TODAY. SHE WROTE ME SHE WAS COMING. WHEN THE SARGE SAID HE & HER TOGETHER, HE GOT SENTIMENTAL & SAID HE'D FIX IT SO I WOULDN'T HAVE TO DO NO DRILLING TOMORROW YOUR SON

Salem Market Quotations

Table of market quotations for various commodities including grains, livestock, and produce. Includes sub-sections for 'GRAIN, HAY AND SEEDS' and 'LIVESTOCK'.

Quotations at Portland

Table of quotations for Portland produce and grain. Includes sub-sections for 'Portland Produce' and 'Portland Grain'.

Portland Livestock

Table of livestock quotations for Portland, including prices for various types of cattle, sheep, and hogs.

Cotton Scare Drops Selling

CHICAGO, April 15 (AP)—Nervousness over the possibility of a ceiling on cotton, which some traders thought might be issued overnight, brought selling into the grain pits near the close Thursday and prices cracked sharply within a few minutes.

Wheat closed 3/4-1 3/4 cents lower, May \$1.42 1/2, July \$1.41 2/8-1/2, corn was unchanged at \$1.01, oats dropped 1/2-3/4 and rye was off 1/2-1 1/2.

Wheat was linked with cotton in Washington dispatches shortly after President Roosevelt's "hold-the-line" anti-inflation order as one of the farm products which would go under ceilings.

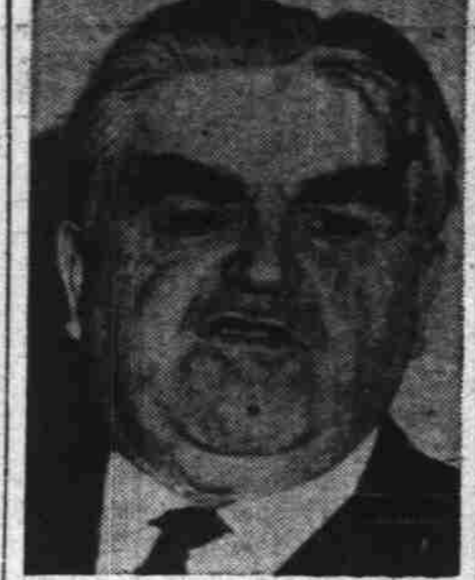
Bang's Disease Increases in Oregon

There was a slight increase in Bang's disease in Oregon cattle in 1942 but reactors are under two per cent, W. H. Lytle, animal industry division of the state agricultural department, announced here Thursday.

Saturday's Radio Programs

Table listing radio programs for Saturday, including news, music, and entertainment shows from various stations like KSLM, KALE, and KGW.

Hits FDR Plan



John L. Lewis (above) frowned as he made his point at a press conference in New York that mine, railroad and farm workers were "aimed at" by President Roosevelt's "hold the line" order.

Other depression influences on wheat included reports that the demand for flour is small and that favorable weather conditions prevailed for the winter wheat crop.

Willamette Vetch Certificate Due, Nibler Advises

Field inspections of Willamette vetch for certification will be made on Marion county farms soon, according to W. G. Nibler, assistant county agent.

All farmers growing Willamette vetch should make sure that certification is required for their fields if they expect to sell their seed for certified Willamette vetch.

Clubs to Give Program At Community Meet

MIDDLE GROVE — The Community club will meet at the school Friday night, April 16, with the program being supplied by the various clubs and other organizations of the community.

Willamette vetch is a strain of common vetch and cannot be identified from common vetch. The certification requires a check on the source of seed and freedom from volunteer common vetch between the drill rows.

Masts, Stephens Move

FAIRVIEW — Mr. and Mrs. O. Mast, who have resided for about two years on the Alfred Lowery farm, have purchased a place near Carlton and are moving.

Mrs. May Moe is a guest of her son-in-law and daughter, Mr. and Mrs. Howard Stephens.



SCORCHY SMITH



Read "Prince Valiant" and "Flash Gordon." Full Pages in Color Sunday.



BY JEEPEERS!! IF I KETCH TH' COFF AN' WHEEZES I'LL SUE TH' WHOR DEPARTMENT



HECK FIRE!! I AIN'T GOT ON NUTHIN' WHITE BUT MY UNDERBROTHERS AN' I AIN'T IN THUNDERATION!! WHAT FER VE GLARIFY AT ME LIKE THAT?



BARNEY GOOGLE



Meet "Freddie" and His Friends Right Around Home. Full Page in Color Sunday.



THE SHIP HAS EVIDENTLY SIGHTED US. YARD BIRD - IT'S COMING THIS WAY - OH, DEAR!! I WISH I KNEW WHETHER I WERE FRIEND OR FOE



WAR! - ONE THING'S SARTIN!! THEY WON'T SQUANDER A TAREPenny ON US. GEN'RAL



MICKY MOUSE



Follow "Tim Tyler" and "Spud." Full Page Every Sunday.



YOU CAST A SPELL ON MY SWEETIE - YOU HUSSY!! YES, HE BELONGS TO ME, I BEWITCHED HIM. SO WHAT?



OH, MY GORSH, YA LOOKS ORFUL!



THIMBLE THEATRE



Carry on With "The Lone Ranger." Full Page Every Sunday.



GLORVOSKY! BUT THAT'S A SWEET FACTORY!



OH, MY GORSH, YA LOOKS ORFUL!



LITTLE ANNE ROONEY



Don't Miss "Flash Gordon." Full Page in Color Every Sunday.



THOSE CROONS!



YOU BET I CAN, AND I WILL! THEN WE'LL HELP YOU SET IT UP.



THE LONE RANGER



THE LONE RANGER



THE LONE RANGER



THE LONE RANGER

Advertisement for Charlie Chan Chinese Herb Co. featuring a portrait of Charlie Chan and text describing their products.

Large advertisement for David Bradley Hammer Mill, featuring the company name, address, and contact information.