

# METROPOLITAN'S PRE-EASTER SAVINGS



**Furniture SPECIALS!**

**30x42 Inch TABLES** Extend to 52"

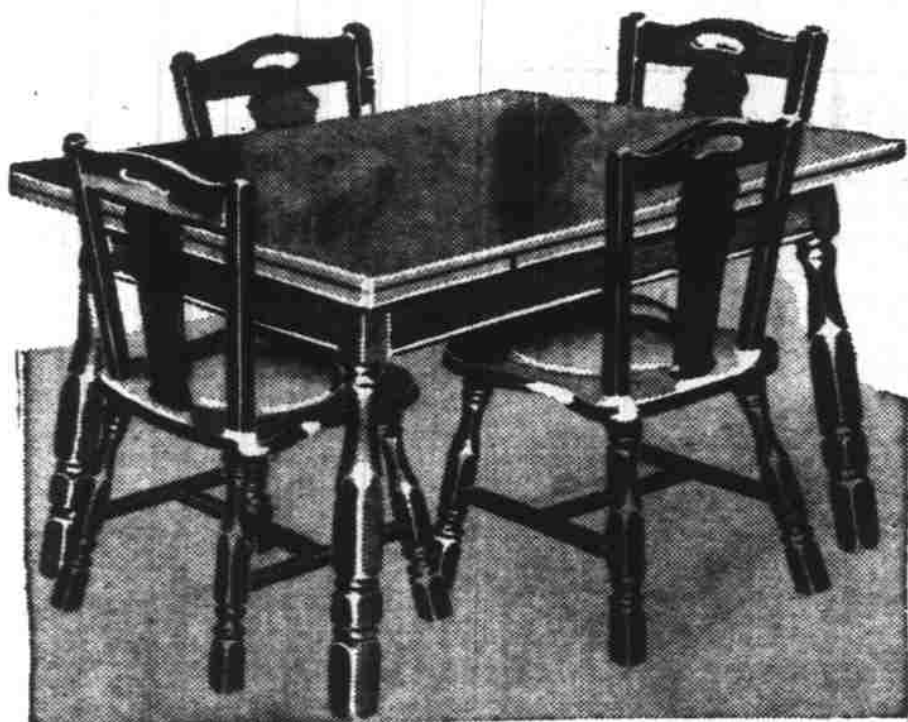
Metropolitan extension tables meet most of the demand for unfinished tables. Each table has a 10 inch leaf to extend its length. Reeded legs, thick top. Douglas fir, unfinished, top and apron assembled. Ready to finish.

**\$6<sup>95</sup>**

## Unfinished KITCHEN CHAIRS

The graceful legs and posts are strong, turned from heavy stock. 3 spindles in the back. Seat 15x15 inches, back 18 inches high, 34 inches high overall. Unfinished Douglas fir. Back and seat assembled, stretcher assembled. Each is complete with instructions.

**99<sup>c</sup>**



## KITCHEN STOOLS

Metropolitan's unfinished stools have smoothly rounded tops and heavy, square, reeded legs. They are strongly braced to prevent wobbling. Made from clean, selected, heavy Douglas fir. All parts smoothly sanded and ready to paint or varnish. You will want to finish them to match your kitchen.

24-Inch Height **\$1<sup>39</sup>**

30-Inch Height **\$1<sup>79</sup>**

## High Chairs

Reeded square legs and posts, spindle and panel back. Seat 12x15 in., tray 7x17 in., 40 in. high overall. Wide hard-to-tip base is 20x21. Unfinished Douglas fir. Back and seat are assembled and so are the stretchers. Leather guard strap is included. A very desirable high chair. Complete with instructions for assembling.

**\$2<sup>95</sup>**

These *audible* Cottons

Will Keep "Clothes - Line Fresh" All Summer

SEERSUCKER GINGHAM PIQUE and others

We're all-out for cottons! They're the darlings of town and country alike . . . saving your more expensive clothes from wear . . . cute enough to double as "good" dresses! They come in lovely styles and cool colors . . . in print, stripe and check patterns.



**\$2<sup>88</sup>**

## RAYON HOSIERY

45 Gauge, 75 Denier Rayon Approximately Equal to 4-Thread Weight

• Higher twist rayon—30 turns to each inch

Sheer, full fashioned, rayon stockings with more strength and wearability than usually found at this price. Beautiful in appearance and sheerness. Higher twist adds to the snag-resistance. Rayon top. High spliced curved panel heel gives extra reinforcement above the shoe. Double sole, reinforced toe. Solid sizes: 8 1/4 to 10 1/2.

**79<sup>c</sup>**



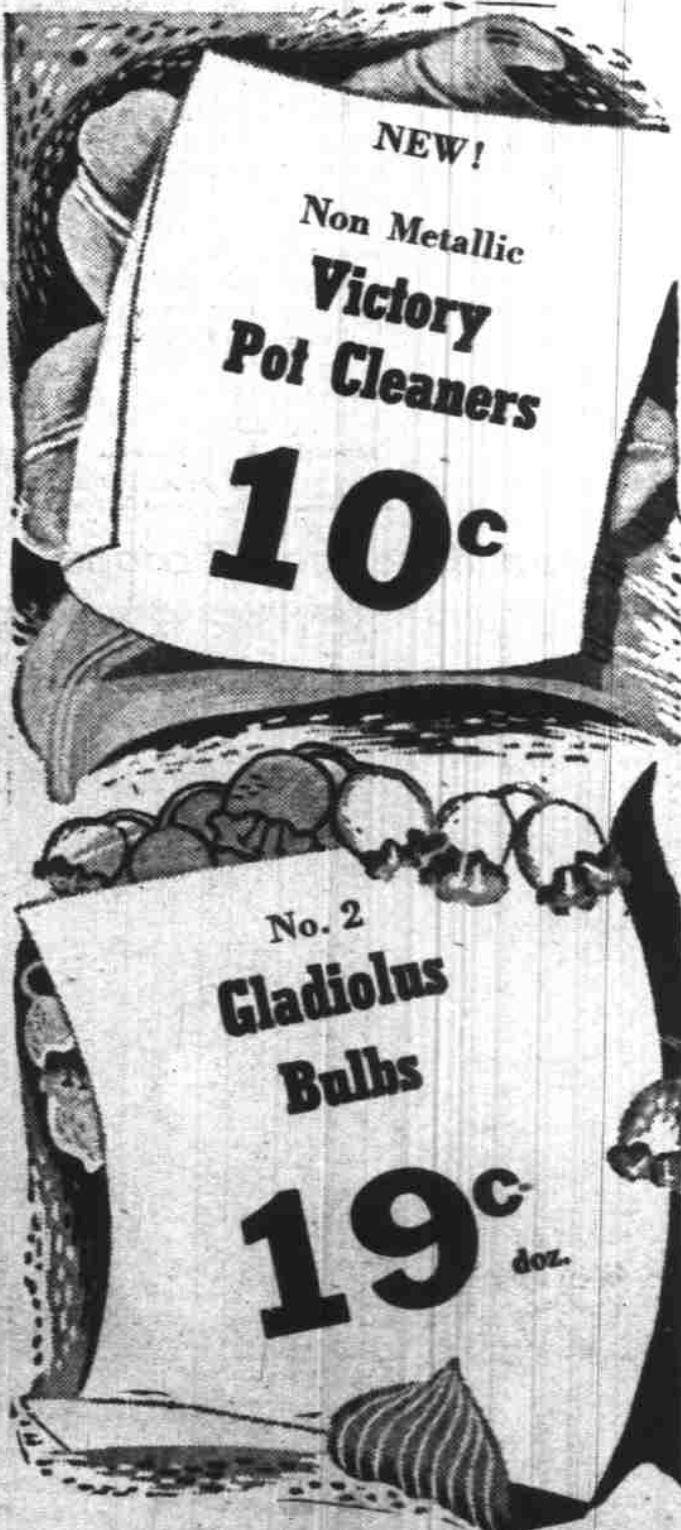
Large Ass't. **EASTER CARDS** **5<sup>c</sup> & 10<sup>c</sup>**



500 Sheets **FACIAL TISSUES** **23<sup>c</sup> box**



Quart Size Waterproof **Food Containers** For Cold Storage **5<sup>c</sup>**



NEW! Non Metallic **Victory Pot Cleaners** **10<sup>c</sup>**

No. 2 **Gladiolus Bulbs** **19<sup>c</sup> doz.**

22"x 44" Colored **BATH TOWELS . . . . . 59<sup>c</sup>**

Assorted Flower and Vegetable **GARDEN SEEDS . . . 3 pkgs. 10<sup>c</sup>**

52"x 52" Hand-Painted **TABLECLOTHS . . . . . \$1<sup>49</sup>**

Rayon Plush **EASTER BUNNIES . . . . . \$1<sup>29</sup>**

Crystal Clear Glass **WATER TUMBLERS . . 3 for 10<sup>c</sup>**

100 Towels in Roll **PAPER TOWELS . . . 2 for 15<sup>c</sup>**

Chenille Seat Cover & Rug **BATHROOM SET . . . . . \$1<sup>98</sup>**

All-Metal, Complete with Tray **TOOL BOXES . . . . . \$1<sup>89</sup>**

Waxed Hardwood **CLOTHES PINS . . . 48 for 10<sup>c</sup>**



Lace Trimmed & Plain

Rayon Crepe & Rayon Taffeta

**Slips**

**88<sup>c</sup>**



Reg. \$8.95 80% Wool **Blankets** Special **\$7<sup>95</sup>**

YOU SAVE CONSISTENTLY AT THE STORE OF "BETTER VALUES!"

136 North Commercial

# METROPOLITAN

Salem Oregon

"THE STORE OF BETTER VALUES"