

Phosphate Orders Due

Tate Warns Farmers No Assurance Any Available Later

Marion county farmers who want to obtain phosphate under the 1943 AAA program for use this fall should place their order immediately with the county AAA office, W. M. Tate, chairman of the county AAA committee, announced yesterday.

One thousand tons of 18 per cent superphosphate have been allocated to Oregon for distribution this fall. One hundred fifty tons have been ordered for this county, and delivery is expected within the next few days.

Cost of the phosphate will be deducted from 1943 AAA production practice payments earned by the grower, the chairman explained. Deduction rates will be \$25.00 a ton. Payment rates for application of phosphate under the 1943 program have been increased to compensate for the increased cost of the material, Tate said.

Application of phosphate in connection with the fall seeding of legumes or annual ryegrass, or to permanent pastures can be of real assistance in meeting war production goals for livestock products and cover crop seeds, the chairman believes. During 1941, there were 504 tons of phosphate distributed to Marion county farmers for application on soil building crops.

While the county committee is hopeful of obtaining additional shipments for distribution next spring, there is no assurance that phosphate will be available after the first of the year, because of the extreme shortage of commercial fertilizer materials.

Wall Street Sees Turning

NEW YORK, Oct. 12—(AP)—A turning point in the 1942 history of Wall Street's reaction to war may be in the making in the next few days, financial men said Monday as they waited resumption of securities and commodities markets after the long weekend holiday.

For the stock market last week completed an a rising note, the most active similar trading period since the weeks just following Pearl Harbor.

Not even the prospect of a two-day suspension of activity occasioned by Columbus Day brought on the customary cautious selling and evening off.

Labor Lack Stops Tomato Harvest

LEBANON—Tomatoes are still being taken at the cannery and if there is not a killing frost will last for another two weeks. The only difficulty now is getting pickers. Many students left this work when they went back to school. The employment office suggests that many who are employed in local mills can come to the fields for a few hours when a regular work is done and in that way help to save the remainder of this valuable crop.

Silverton Club Pushes Fish Bill

SILVERTON—The forming of a campaign to push locally toward the success of the coastal streams referendum, commonly called the steelhead bill, will be one of the chief matters to come before the Silverton chapter of the Isaak Walton league at its opening meeting Monday night, according to W. Clark Bachman, president.

Farmers Union News

AUMSVILLE — The Farmers Union will hold their next meeting at the city hall Tuesday night.

PEDEE — The Farmers Union was well attended October 9. Speakers were Mrs. J. A. Ingles, Polk county chairman, George McCracken, WFB Polk county salvage commission from Dallas.

Discussion on the cantonment was given by S. Howard. Lunch was served by Mrs. Lacey and the program was given by Mrs. Ralph King.

"Strictly Private" By Quinn Hall



Wide World Features

Salem Market Quotations

The prices below supplied by a local grocer are indicative of the daily market prices paid to growers by Salem buyers but are not guaranteed by the Statesman.

VEGETABLES	
Potatoes, 100 lbs No 1 new	2.00
Turnips, bushels	1.50
Lettuce	2.50
GRAIN, HAY AND SEEDS	
Oats, No. 2	28.00@30.00
Feed barley, ton	18.00@27.00
Clover hay, 100 lbs	18.00@18.00
Oat and vetch hay	16.00@18.00
Wheat	37
BUTTER, EGGS AND POULTRY	
Butter, extra	42
Butter, standard	38
Eggs, large	45
Eggs, medium	40
Eggs, small	35
Chickens	24
Cracks	24
POULTRY	
Colored fryers	28
Colored hens	21
White Leghorn fryers	21
White Leghorn hens	17
Large B hens	45
Medium A	40
Large B pullets	24
Checks, undergrades	24
Large dirty	20
POULTRY	
Colored fryers	25
Colored hens	18
Leghorn fryers	17
Leghorn hens, under 3 1/2 lbs.	14
Leghorn hens, under 3 1/2 lbs.	14
Old roosters	10
No. 2 poultry 5c less	
LIVESTOCK	
Buying prices for No 1 stock, based on conditions and sales reported.	
Spring lambs	11.00
Fees	1.50
Hogs, top 160-225 lbs.	14.00
Sows	11.00@12.00
Veal top	12.50
Dairy type cows	6.00 to 7.00
Beef type cows	7.00 to 8.50
Bulls	8.00 to 10.50
Heifers	7.00 to 8.00
Dressed veal	21
WOOL AND MOHAIR	
Wool	21
Mohair	45

Quotations at Portland

Portland, Ore., Oct. 12 — (AP) Produce exchange: Butter, extras 42; standards 38; prime firsts 47; firsts 45 1/2.

Eggs: Large extras 47; standards 43; medium extras 43; standards 38; small extras 30; standards 25.

Cheese: Triplets 25 1/2; loaf 27 1/2.

Portland Produce

Portland, Ore., Oct. 12 — (AP) Butter: Prints, A grade 52-52 1/2; B grade 51-51 1/2; C grade 50-50 1/2. Country butters, best 28; standard 25; vealers, fancy 25c lb.; good heavy 15-18c lb.; rough heavy 12c lb.; canner cows 11-12c lb.; cutters 12 1/2-13c lb.; bulls 12c lb.; spring lambs 22c; ewes 9-10c lb. Mohair — 1942, 12-month, 45c lb. Hops — Seed stock, 1942 crop 1.10 lb.; seedless 1.15 lb. Onions — Green, 40-50c doz. bunches; Oregon dry 1.40; Idaho 1.15; Yakima 1.25-30-lb. bag; pickling 15c lb. Potatoes — Klamath, 3.15-3.25 cental; Yakima 3.25; Deschutes 3.25-3.35 cental; local 2.50 cental. Hay — Selling prices on trucks: Alfalfa No. 1 24.50 ton; oats-vetch 16.00 ton, valley points; timothy 15.00 ton; cover 15.00 ton.

Dallas Women Enter Service

DALLAS—Mary Ellen Dalton, daughter of Mr. and Mrs. E. V. Dalton, of Dallas, is the first Dallas girl to be accepted for enlistment in the Women's Auxiliary Voluntary Enlisted Service of the US navy. Miss Dalton reported in Seattle, passed the examinations and left last week for Madison, Wis., to enter training in radio and communications.

She was a member of the 1942 graduation class of Oregon State college and has been employed in Meier and Frank store in Portland since graduation. Miss Dalton was given the rating of an apprentice seaman in the WAVES and will attend school for a period of four months. After six months in the service she will be eligible for officers' training.

Mrs. Violette Hawk Watt, daughter of Mrs. Belle Hawk of Falls City has already spent four weeks in training in the Women's Army Auxiliary Corps at Fort Des Moines, Iowa. She has finished her four weeks basic training and will be transferred to the Chamberlain hotel in Des Moines to take motor transport specialist training for eight weeks.

DRS. CHAN - LAM
Chinese Herbalists
231 North Liberty
Upstairs Portland General Electric Co. Office open Tuesday and Saturday only—8 a.m. to 1 p.m., 4 to 7 p.m. Consultation. Stand pressure and urine tests are free of charge. Practiced since 1917.

Price Boosts Approved for Logging Firms

Authorization for overtime additions to the established maximum prices for 19 west coast logging companies which have qualified as over producers have been announced by the office of price administration, according to the Portland bureau of the office of war information.

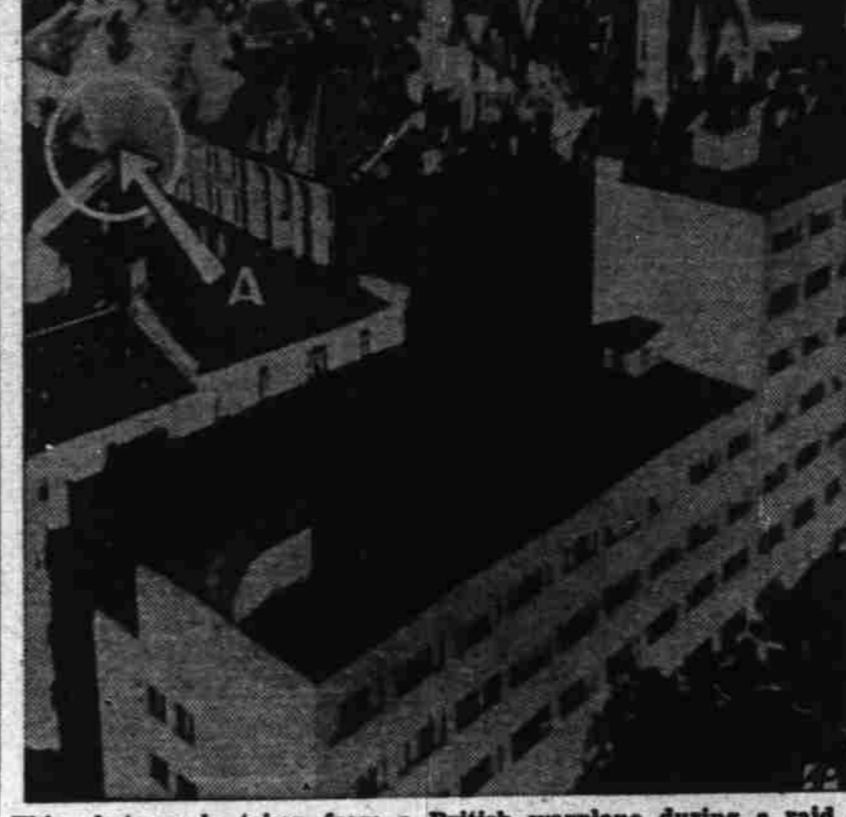
Increases in the companies' maximum prices are in accordance with amendment No. 2 to maximum price regulation No. 161 (west coast logs), which provides that logging companies maintaining regular overtime output may add certain specified amounts to their ceiling prices.

The following operators being on a 48-hour week are among those permitted to add to the maximum prices of all logs produced by them \$1 per 1000 feet, log scale:

Hutchins & Hutchins, Foster; Elk Creek Logging company, Foster; Simonson Logging company, Cascadia; Mist Logging company, Grand Ronde; Pacific Logging company, Taft; Sharp Logging company, Molalla.

The following persons being on a 54-hour week have been authorized to add to the maximum prices of all logs produced by

RAF Blasts Gestapo in Oslo



This photograph, taken from a British warplane during a raid on Gestapo headquarters in Oslo, Norwegian capital, shows, according to British caption (a) direct hit on the Gestapo headquarters; (b) the central cupola of the building from which the Nazi flag was flying; (c) Oslo university. The raid was made by low-flying mosquito bombers. Dust and debris rising from the Gestapo headquarters was caused by the impact of the bombs which were of delayed-action type.—Associated Press Telemat.

them \$1.50 per 1000 feet, log scale: C&H Logging Company, Elsie; C&H Logging company, Mehama;

Silver Creek Creamery Sold

SILVERTON—The Silver Creek Creamery, which has been closed the past ten days because of lack of anyone to run it, was sold this week by J. H. Grills, owner, to L. J. Simonsen of Woodburn and Scio.

Grills has been employed at Portland for several months and the creamery was managed here by Carl Gover, who left in late September for other work in Montana.

Mr. Simonsen is associated with Joe Withers, mayor of Scio, who was formerly in business at Silverton. Ira Rich will be local manager of the creamery.

Fred G. Bryant of Napa, Calif., has purchased the Black & White restaurant at Silverton and opened it to the public Saturday.

Lyle Hughes, former owner, plans to go into the army. Victor Elvestrom has leased the Green building on North Water street to house his flax plant. Elvestrom lost his machinery and considerable raw flax in the fire that destroyed the city warehouse on South Water street in August.

for burns Sunday sustained when a jar burst while her mother was canning.

Trucks Are Hard On Few Cows Left

SHELBURN—A large freight truck collided with two of R. R. Margarell's cows as they were crossing them over the county road Thursday. One of the cows was killed and the other injured.

LOANS
Cope With The Unexpected... With A Personal Loan
Come to us for cash to meet those unforeseen bills. We will extend a loan to you promptly.
Find out about our dignified credit terms... For money in a hurry see
State Finance Co.
212-222 Guardian Bldg.
Corner Liberty & State
Telephone 5168
L.A. 8-213 M-222



HOP HARRIGAN



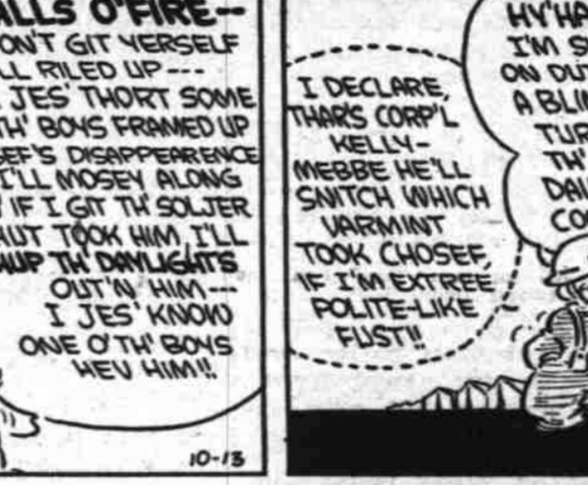
THE SUPPER



WELL, I'M GLAD IN A WAY!



NO! AN' I AINT GOT NER KANGAROO



BALLS O'FIRE--



I DECLARE, THARS CORP'L



WHAT TH??



GOOD GOSH! THE THINGS DON' A POLE VAULT!



DOGGONE IT! HES GETTIN' AWAY!



DONT WORRY... I AINT AIMIN' TO GIT NO CLOSER TO THAT CRITTER!



THANK GOODNESS Y' GOT IT OUT WE SAW THE FIRE, BUT COULDN'T GET HERE IN TIME!



DO YA THINK I WOULD DOUBLE-CROSS A LITTLE KID?



THE PAY IS A MILLION DOLLARS A YEAR...



HE'S JUST THE MAN FOR PRIME MINISTER...



KNOCK THE HOUR IS UP, KNOCK IT UP, I'LL BET THAT'S POPEYE



I DO WISH THERE WAS SOME WAY OF CONVINCING MRS. RANCE THAT IT'S DANGEROUS ALWAYS TO KEEP THOUSANDS AND THOUSANDS OF DOLLARS IN A DRESSER DRAWER



IT'S ONLY THE MERCY OF HEAVEN THAT KEEPS ROBBERS FROM COMING IN AND HELPING THEMSELVES TO A FORTUNE



I THOUGHT FOLKS ALWAYS PUT THEIR MONEY IN TH' BANK WHERE NOBODY COULD STEAL IT



MOST PEOPLE DO, BUT MRS. RANCE OFFERED \$10,000 REWARD FOR THE RETURN OF HER LOST BABY



I'VE GOT THE MAP OF THAT GOLD MINE. LEMME SEE IT, DRUM!



NOT SO FAST, FINDLEY! COME ON! LEMME SEE IT!



SO DO I, AND THE REDSKIN AINT EVEN STAKED IT. COME ON, BOYS, WE'VE GOT TH' GET THERE!



I KNOW WHERE THIS CREEK IS! WAIT, FINDLEY, HOLD ON!

To relieve COLD'S
Miserable
666
Liquid Tablets
Salve
Nose Drops
Cough Drops
Try "Rub-My-Throat" Wonderful Liniment

WANTED
Filberts and Walnuts
Highest price cash on delivery for orchard run. See us before you sell.
Morris Klorfein Packing Co.
460 N. Front Street, Salem Tel. 7633

THE LONE RANGER