

THE ASSOCIATED PRESS NEWS IN PICTURES



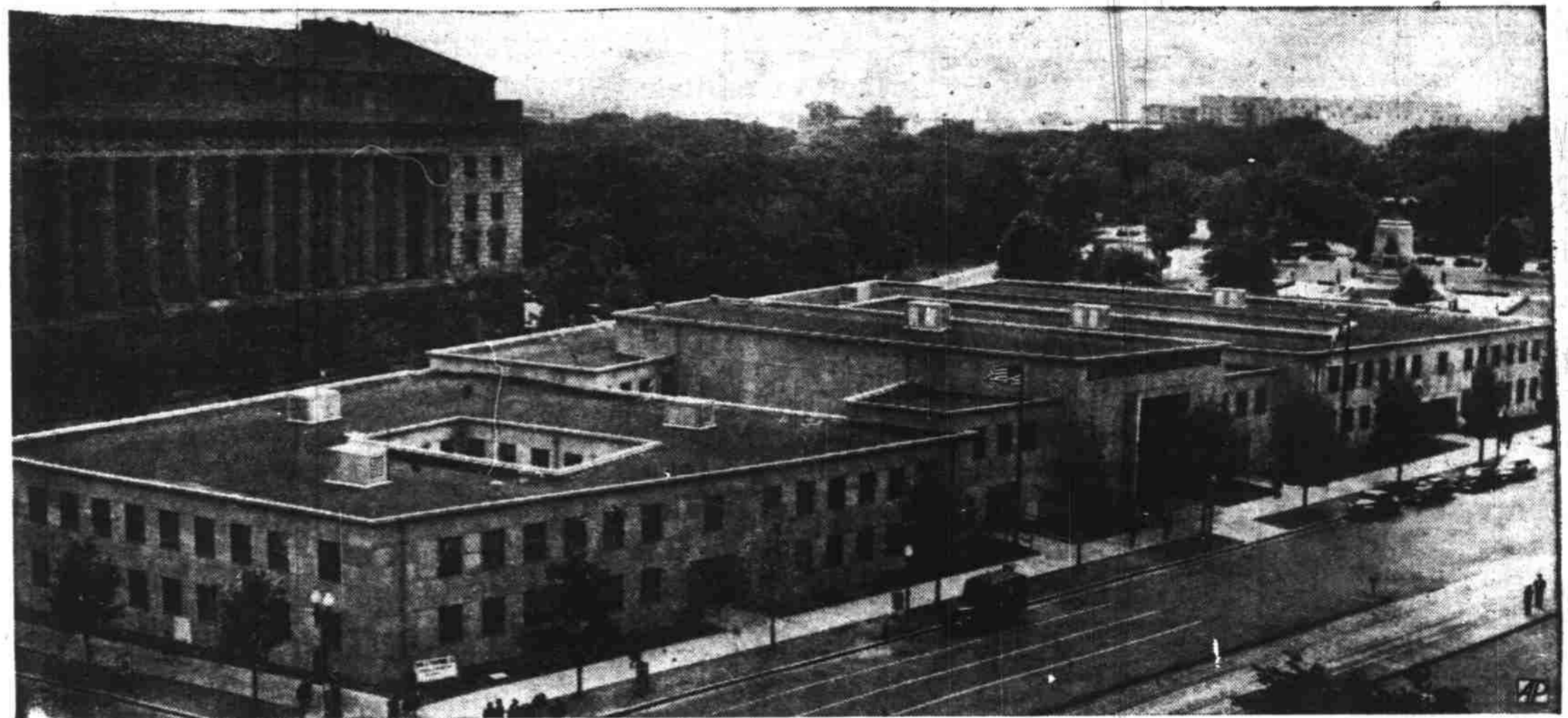
GRIM PRACTICE—Wearing protective equipment, these Camp Wolters, Tex., soldiers fence with dummy rifles bearing dummy tips. It's tough, bruising practice for a grim war job



BONDS FOR 'ASHCANS'—Astride a depth charge, actress Jane Russell talks to sailors while selling bonds.



FRIEND OR FOE?—Moon, the monkey, tentatively stretches the hand of friendship toward one of twin baby bears placed on the Denver, Colo., city park zoo monkey island for the summer.



HOUSE OF ANSWERS—Thousands of questions about government activities pour into Washington, D.C., daily, so a U.S. public information center was organized and this building built to house it. Lowell Mellett, director of the Office of Government Reports, heads the staff. Commerce department building is at left.



FORSAKES BROWN DERBY—Al Smith laid aside his famed brown derby as he bought a war bond show ticket.



EGG-CELLENT—This bid-die at George R. Parker's Monmouth Junction, N.J., farm proudly wears an "E" awarded by Martel Oglesby as nation's hens exceed government production quota.



'MOTHERS' SOLDIERS—Rita Hayworth, named by Camp Callan, Calif., soldiers "their-away-from-home-mother."



FINANCIER—This picture of J. P. Morgan, famed banker seldom photographed, was made as he watched a ceremony aboard the U.S.S. Prairie State, a training ship at New York City.



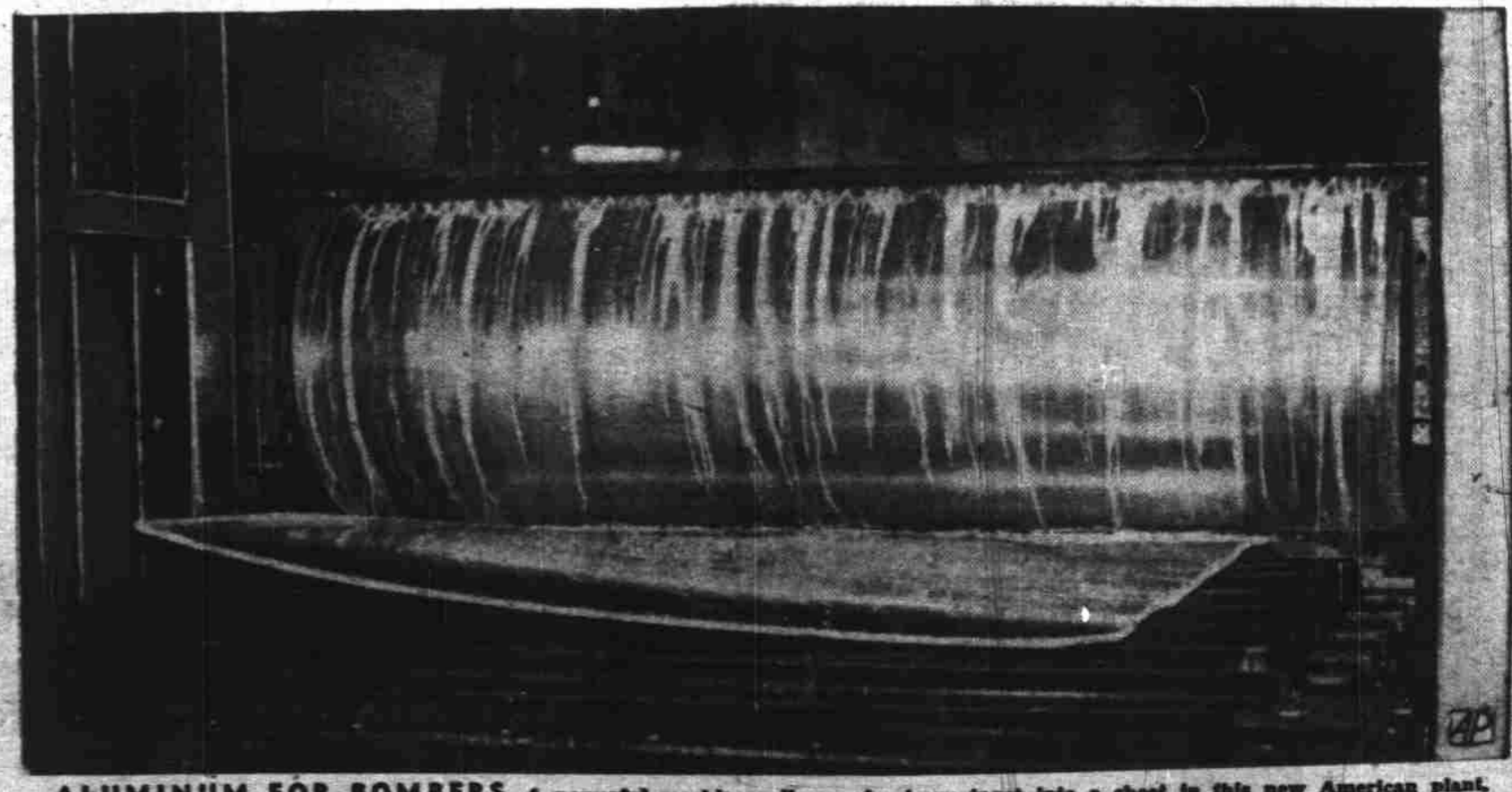
TROUBLE FOR JAPS—This is Asamayama, largest volcano in Japan, as it appeared in 1931. New eruptions were reported.



CABLE CAR VIEW OF CAPETOWN—Passengers in the cable car coming down from Table Mountain get this excellent view of Capetown, South Africa, as it sprawls out in the distance.



DOUBLE DUTY—Men's hats have taken their place with trousers as Film Actress Geraldine Fitzgerald demonstrates a straw hat which, when closed of flowers and a veil, is revealed as the traditional sailor straw hat for men's summer wear "Hollywood thought it up."



ALUMINUM FOR BOMBERS—A powerful machine rolls an aluminum ingot into a sheet in this new American plant. These sheets are rolled out more than a city block long. About a week later this light and strong metal becomes the "skin" of a bomber.