

Stock Trend Is Downward

Few Issues Held up By MacArthur Optimism

NEW YORK, March 19-(AP) The stock market displayed faint signs of recovery here and there Thursday but the general course of prices was downward.

MacArthur optimism continued to prop boardroom sentiment but further skepticism averted taxes, labor and maintained dividends served to limit bids in most cases and inspire mild selling.

The list did fairly well at the start. Dealings soon faltered along with trends and, at the close, fractional declines were in the majority, with a few losses of as much as 4 in the chemicals.

The Associated Press average of 60 stocks was off 1.1 of a point at 34.9, which meant that, with yesterday's retreat, it had given up all but 2 of its St. Patrick's day rally.

A modicum of comfort was derived from the fact offerings were never urgent. Transfers of 274,800 shares compared with 335,780 yesterday and were the smallest for a full session since last June.

Dow Chemical was off 4 points and Homestake Mining down 1 1/2, both at new lows for the year.

Steele, motors, rails, rubber and aircrafts did little either way. Slightly in arrears were Chesapeake & Ohio, Southern Pacific, Sears Roebuck, US Rubber, Anaconda, American Telephone, Air Reduction, Westinghouse and Texas Co.

On the advancing side were Pennsylvania, US Steel, Good-year, Lehigh Valley Coal Preferred, Johns-Manville, American Smelting, Sperry, International Harvester and Standard Oil (NJ).

Slug Menace on Fall Crops Less Due to Cold

State and federal entomologists who have been making a survey of slug conditions in western Oregon report that cold weather this winter has killed off the adults to such an extent that little damage to fall-sown crops is expected.

Eggs are now hatching, however, so that slugs may still be a menace to such spring-sown crops as red clover.

Farmers are advised by OSC experiment station men to put out test baits about every 10 feet in from the edge of the field. In an average of five or more slugs are killed overnight at each point, baiting will be necessary for protection of the crop.

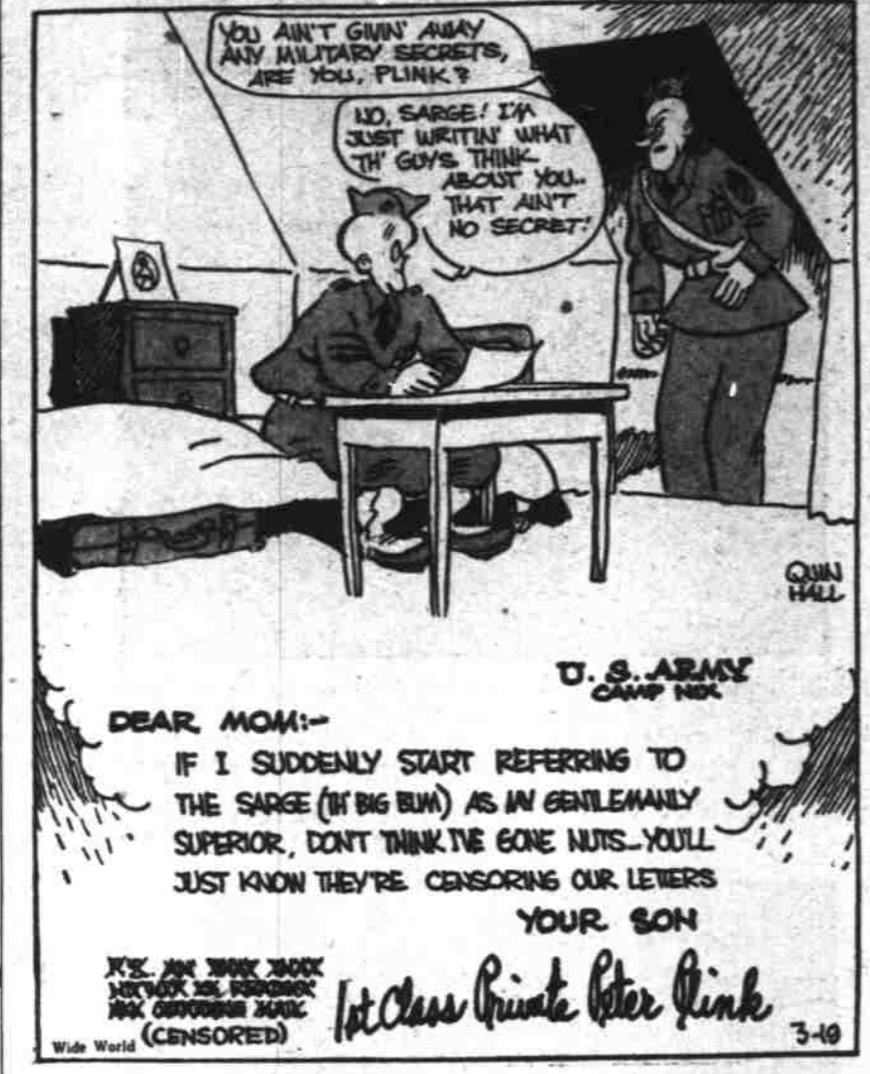
The pellet-type metaldehyde bait applied four or five pounds per acre is recommended.

Gardeners will find it cheap insurance to broadcast the bait regardless of advance indications.

Large Eggs Add Cent

PORTLAND, March 19-(AP) One cent was added to the price of large A and B grade eggs on the produce exchange Thursday but mediums in both grades were unchanged.

"Strictly Private" By Quinn Hall



DEAR MOM: IF I SUDDENLY START REFERRING TO THE SARGE (IN BIG BUM) AS AN GENTLEMANLY SUPERIOR, DON'T THINK I'VE GONE NUTS... YOU'LL JUST KNOW THEY'RE CENSORING OUR LETTERS YOUR SON

Let Class Think Peter Pink

Quotations at Portland

PRODUCE EXCHANGE PORTLAND, Ore., March 19-(AP) Butter-Prints, A grade, 38 1/2c in parchment wrappers; 40 1/2c in cartons; B grade, 36c in parchment wrappers, 40c in cartons.

PORTLAND GRAIN PORTLAND, Ore., March 19-(AP) Wheat: Open High Low Close May 1.03 1.03 1.03 1.03

PORTLAND LIVESTOCK PORTLAND, Ore., March 19-(AP) (USDA)-Hogs: Salable 300, total 800. Barrows and gilts, gd-ch.

PORTLAND PRODUCE PORTLAND, Ore., March 19-(AP) Live poultry-Buying premium quality Leghorn broilers under 1 1/2 lbs.

STOCKS AND BONDS Complied by The Associated Press STOCK AVERAGES

STOCKS AND BONDS BOND AVERAGES

Tin for Home Work Given

Cans Available for Housewife; New Regulations Told

Tin cans for home canning are not included in the recent order restricting tin for commercial packing of many commodities.

Home canning is being encouraged this year as a means of lifting some of the load from commercial canners, who have been asked for capacity packs of many fruits and vegetables.

The war production board's recent tin conservation order, designed to stretch one year's tin supplies over three years' needs, increase the amount of tin for home canning over 1941 will release a lot more of the commercial pack for other needs.

Wool in Boston BOSTON, March 19-(AP)-(USDA) There was a fair demand today for fine combing territory wools at around \$1.15-1.18, scored basis.

POLK CLUBS HOLD RADIO TRYOUTS ON SATURDAY RICKREALL - 4H clubs of the county will hold their elimination program here Saturday afternoon in the grange hall.

HEARING SET ON CHERRY CONTAINER Whether Oregon cherry growers will be granted use of an additional container, 3 1/2 inches deep, 10 1/2 inches wide and 15 inches long, with a half inch cleat at the top of each end, will be considered at a hearing in the state agricultural department here March 25.

PRODUCE MART PRICES PORTLAND, March 19-(AP) Root vegetables continued in good demand at the Farmers' wholesale market Thursday and limited supply of green onions sold quickly at prices ranging from 35 to 40 cents dozen bunches.

ST. LOUIS - Berry growers around this vicinity have recently finished training their berries.

Salem Market Quotations

Table with columns for various market items like Asparagus, Carrots, Cauliflower, Celery, etc. and their corresponding prices.

Grain Prices Drop Heavily

CHICAGO, March 19-(AP) Grain prices slumped fractionally in early trading Thursday, failing to show any sustained rallying power and then dropped abruptly to new lows for the day in the last two minutes.

Wheat closed 1 1/4 to 1 1/2 cents lower, May \$1.26 1/2-1.27, July \$1.28 1/2-1.29.

Fertilizer Pays When Applied to Grass Seed Land

Fertilizer applied to perennial grass grown for seed is paying western Oregon farmers big dividends, reports Art King, extension specialist in soils at Oregon State college.

Nitrogen has been found to be the most important fertilizer for such use, and has returned a profit on practically every variety of grass on every soil type in the Willamette valley.

King recommends applying fertilizer to grass through an attachment on a drill or with some type of broadcast spreader, as it is almost impossible to make an application by hand.

Comedy Scheduled

MILL CITY - The three-act comedy, "Absent Minded Professor" under the direction of Mrs. Olive Oliver, will be given Tuesday afternoon and night in the high school auditorium.

LOANS STATE FINANCE CO. FOR MONEY IN A HURRY. 344 State Lic. S-216 M-222 Phone 9261

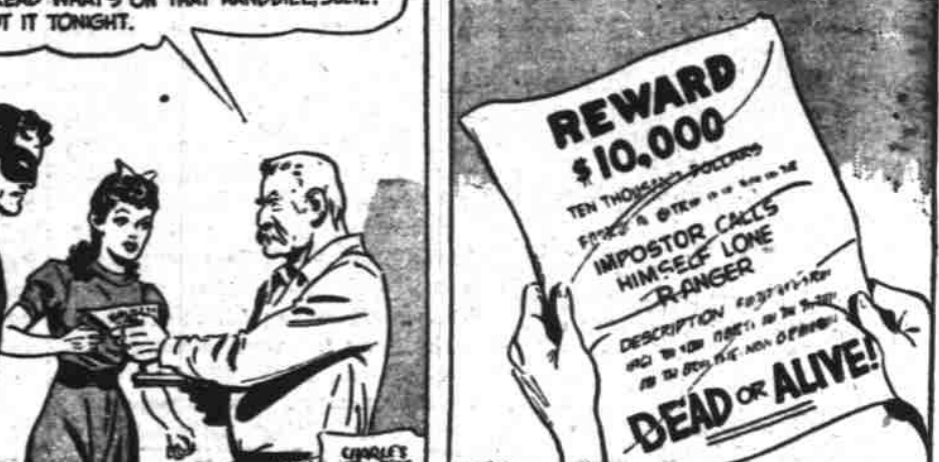
THE LONE RANGER



A Price on His Head



POLLY AND HER PALS



MICKEY MOUSE



Open and Above Board!



THIMBLE THEATRE - Starring Popeye



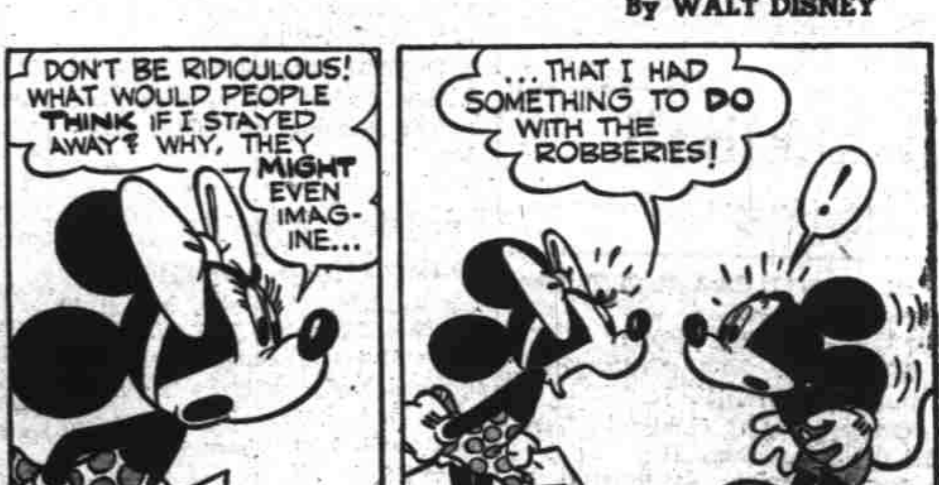
LITTLE ANNIE ROONEY



The First Day of Spring!



THIMBLE THEATRE - Starring Popeye



THE IDEA, POPEYE TAKING ON SUCH A CREATURE



IF HE EVEN LOOKS AT HER I'LL CREASE HIS SKULL WITH AN ANCHOR



BUT WHEN YOU'RE A FARMER, YOU JUST GOTTA THINK 'BOUT THE WEATHER ALL THE TIME



THE IDEA, POPEYE TAKING ON SUCH A CREATURE



IF HE EVEN LOOKS AT HER I'LL CREASE HIS SKULL WITH AN ANCHOR



BUT WHEN YOU'RE A FARMER, YOU JUST GOTTA THINK 'BOUT THE WEATHER ALL THE TIME



THE IDEA, POPEYE TAKING ON SUCH A CREATURE



IF HE EVEN LOOKS AT HER I'LL CREASE HIS SKULL WITH AN ANCHOR



BUT WHEN YOU'RE A FARMER, YOU JUST GOTTA THINK 'BOUT THE WEATHER ALL THE TIME

