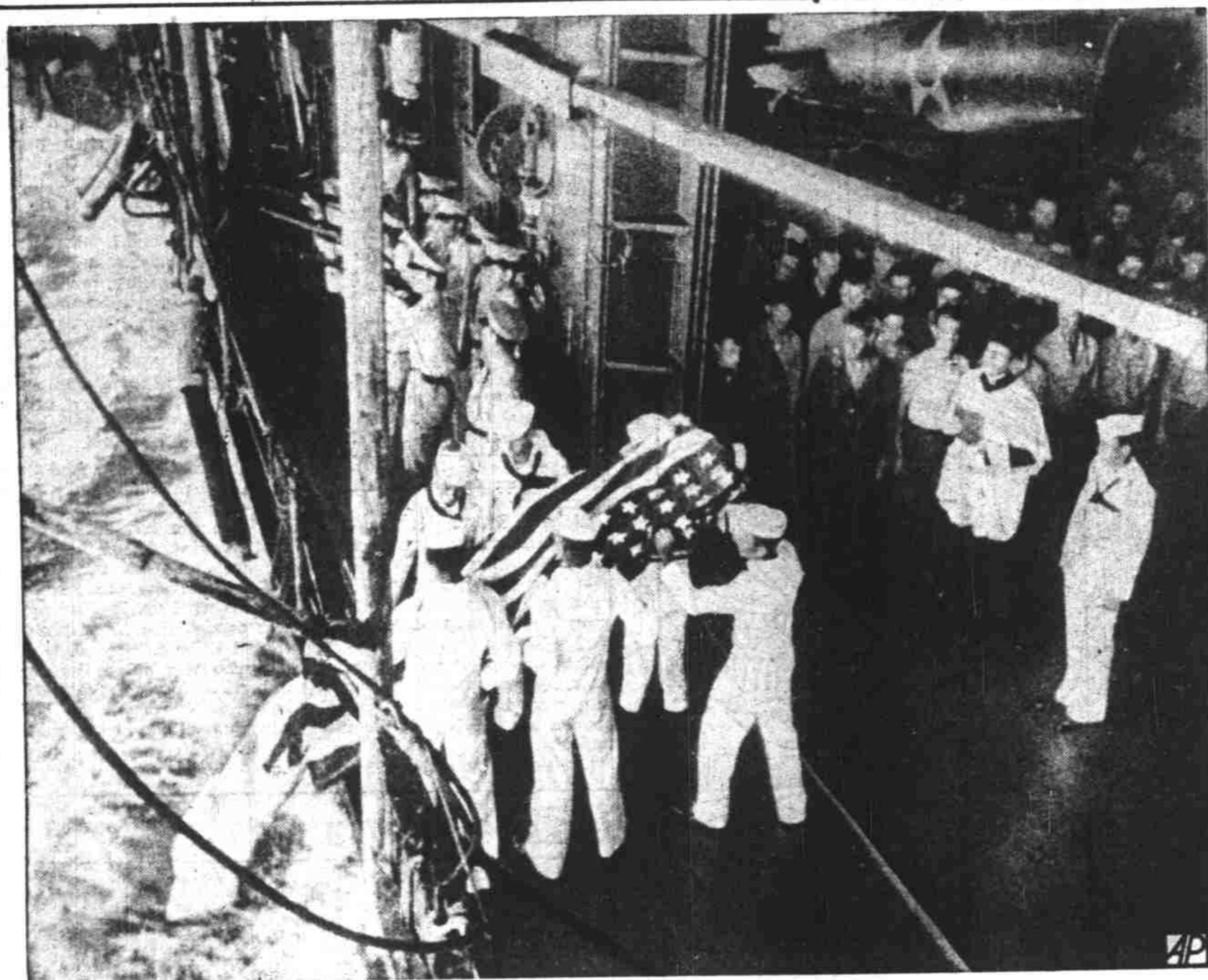


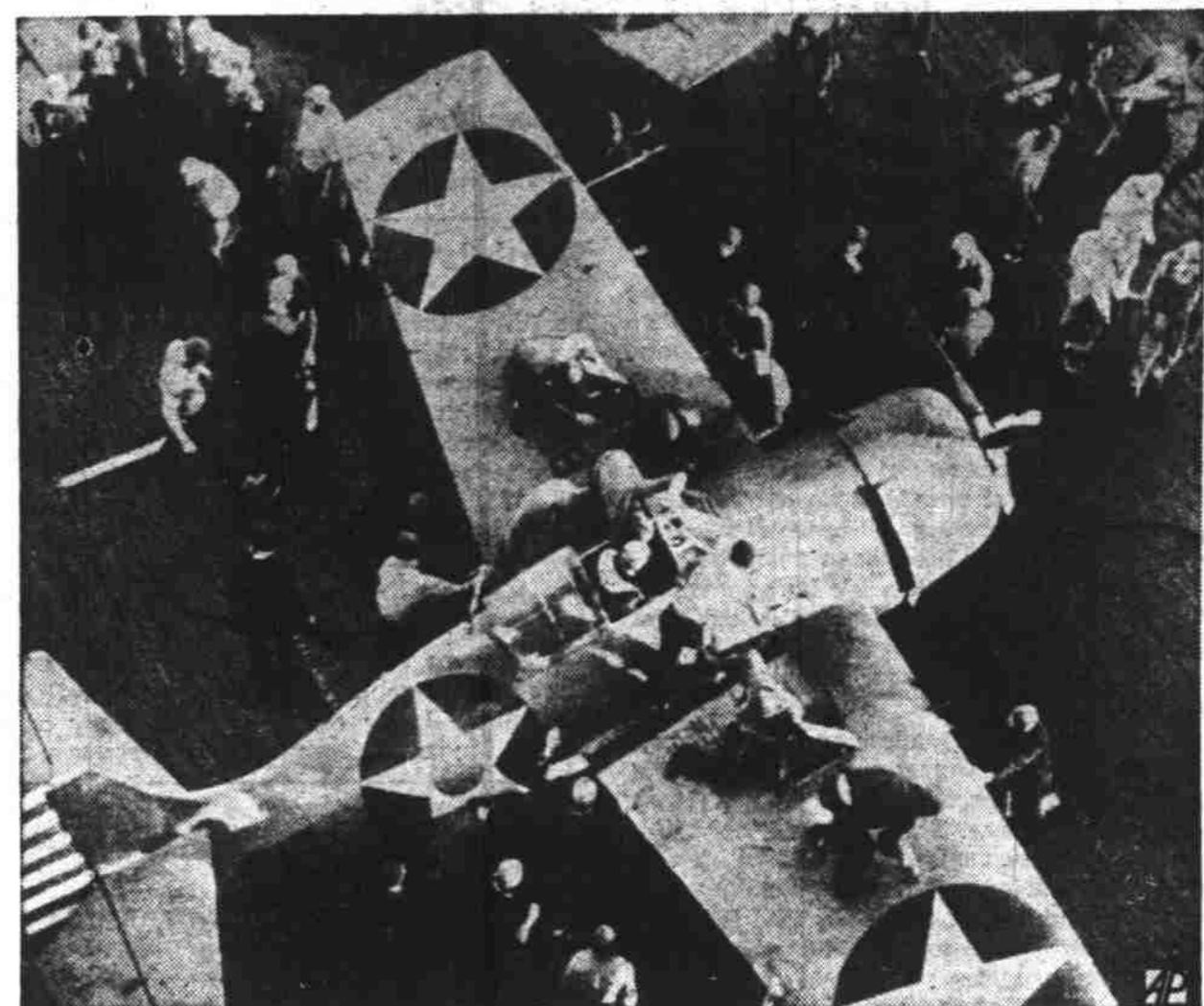
More Pictures of US Forces in War Action



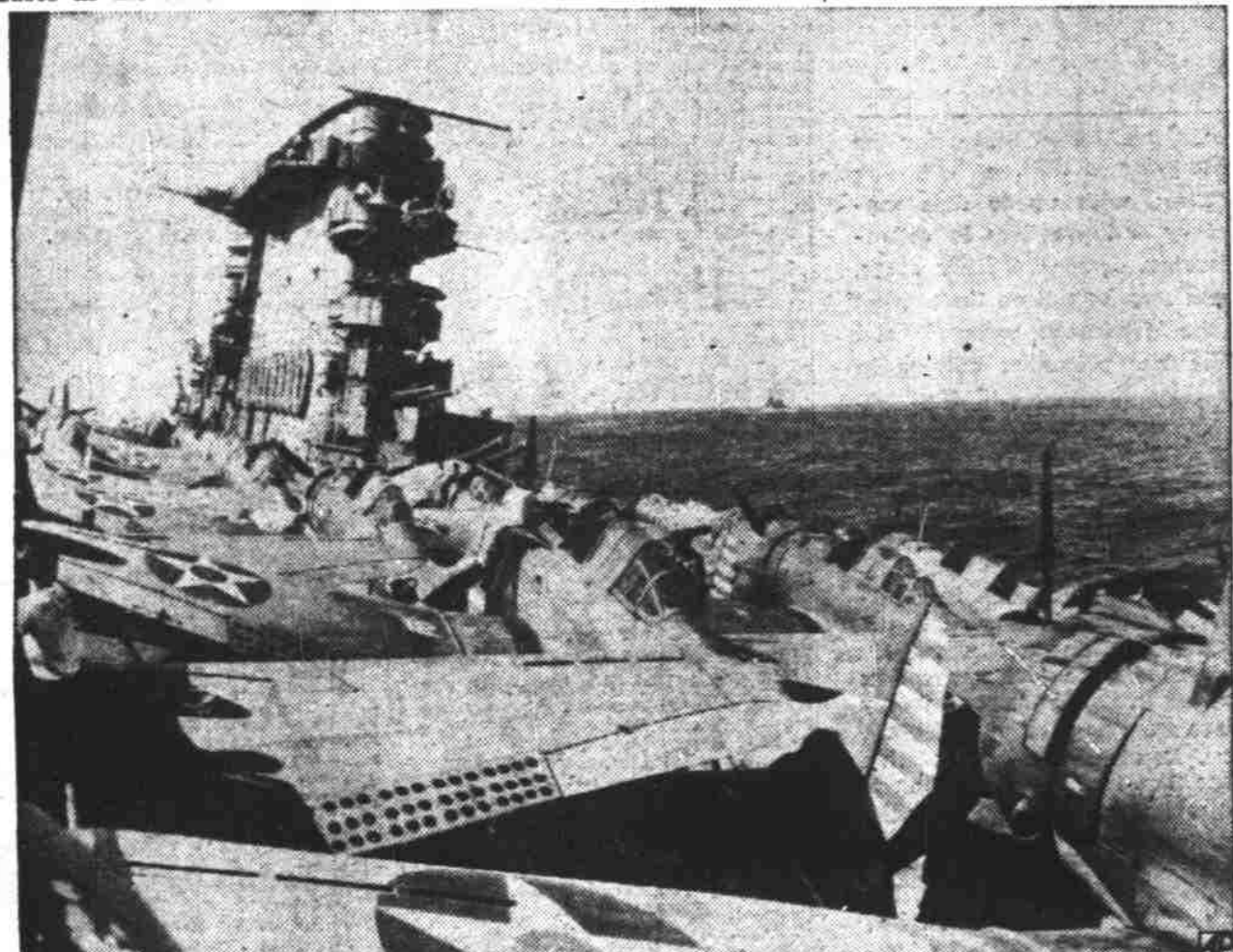
Solemn postscript to the US navy's crushing assault on the Japanese, of one of the few casualties suffered in the surprise attack. Associated Press photo from Paramount News.



Williams S. Knudsen wore his new lieutenant general's uniform for the first time in Washington, cutting quite a figure at the war department. The former director general of production management for defense was given his "three star" rank by President Roosevelt several weeks ago and named director of war department production.



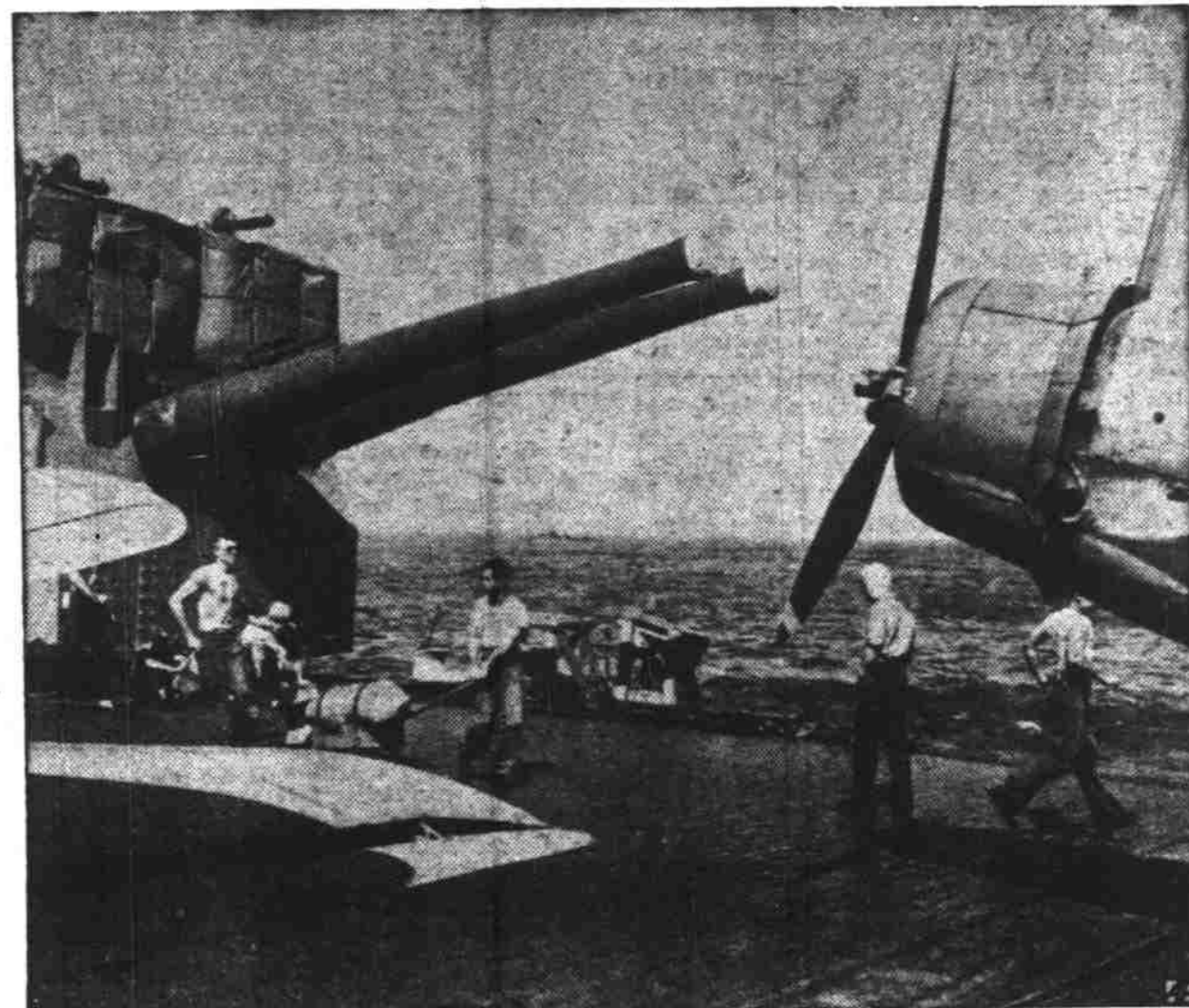
Sailors swarm over this plane to refuel and reload it for another sally at a Jap base in the Marshall-Gilbert Islands from its carrier. Associated Press photo from Paramount News.



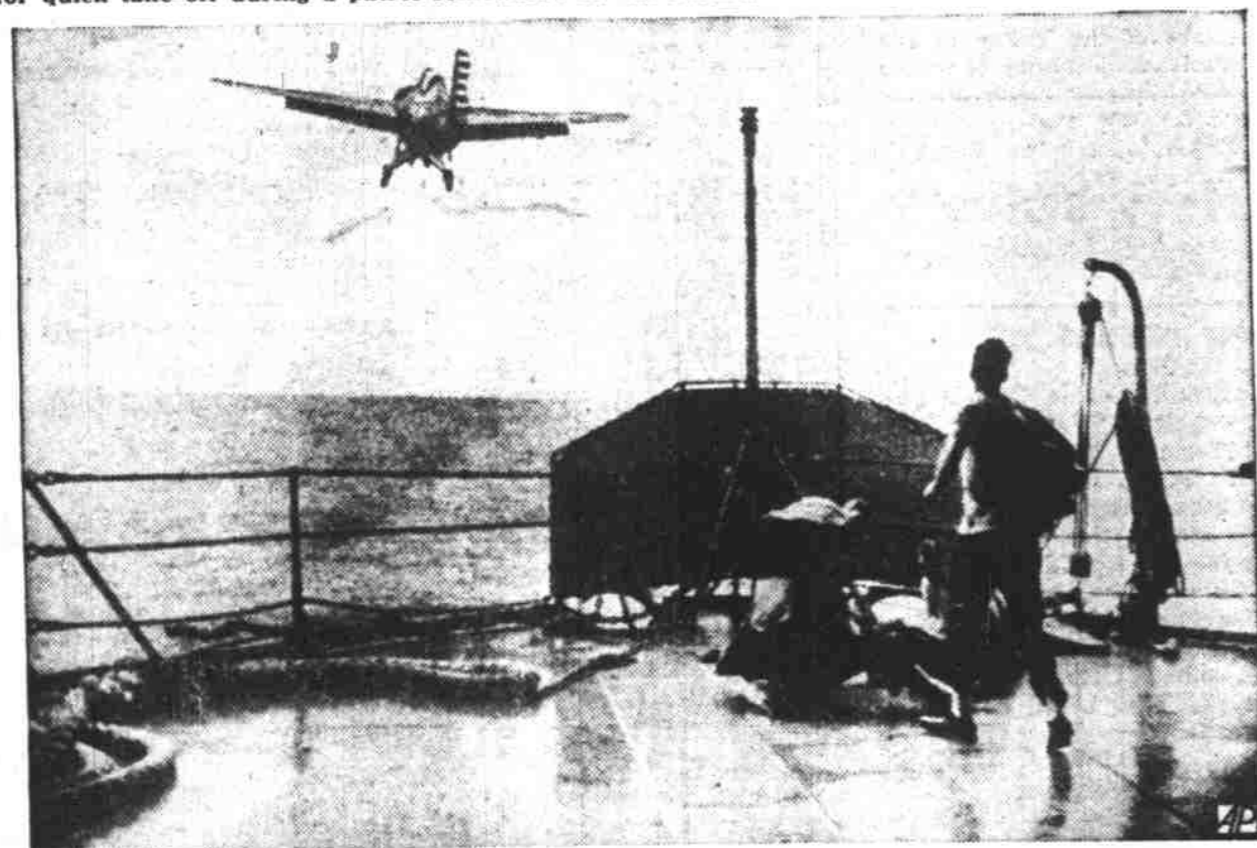
Closely-packed United States naval planes are shown lined up on the deck of an aircraft carrier ready for quick take-off during a patrol somewhere in the Pacific.



The United States marine corps has adopted this new type of helmet. Designed and tested by the army, the headpiece is made in two parts. Without the steel shell, it serves as a sun helmet. The rifle pictured here is the new semi-automatic Garand.



Crew members of a United States aircraft carrier, moving on the double, re-load one of the brood of planes with bombs and depth charges during an offensive patrol somewhere in the Pacific.



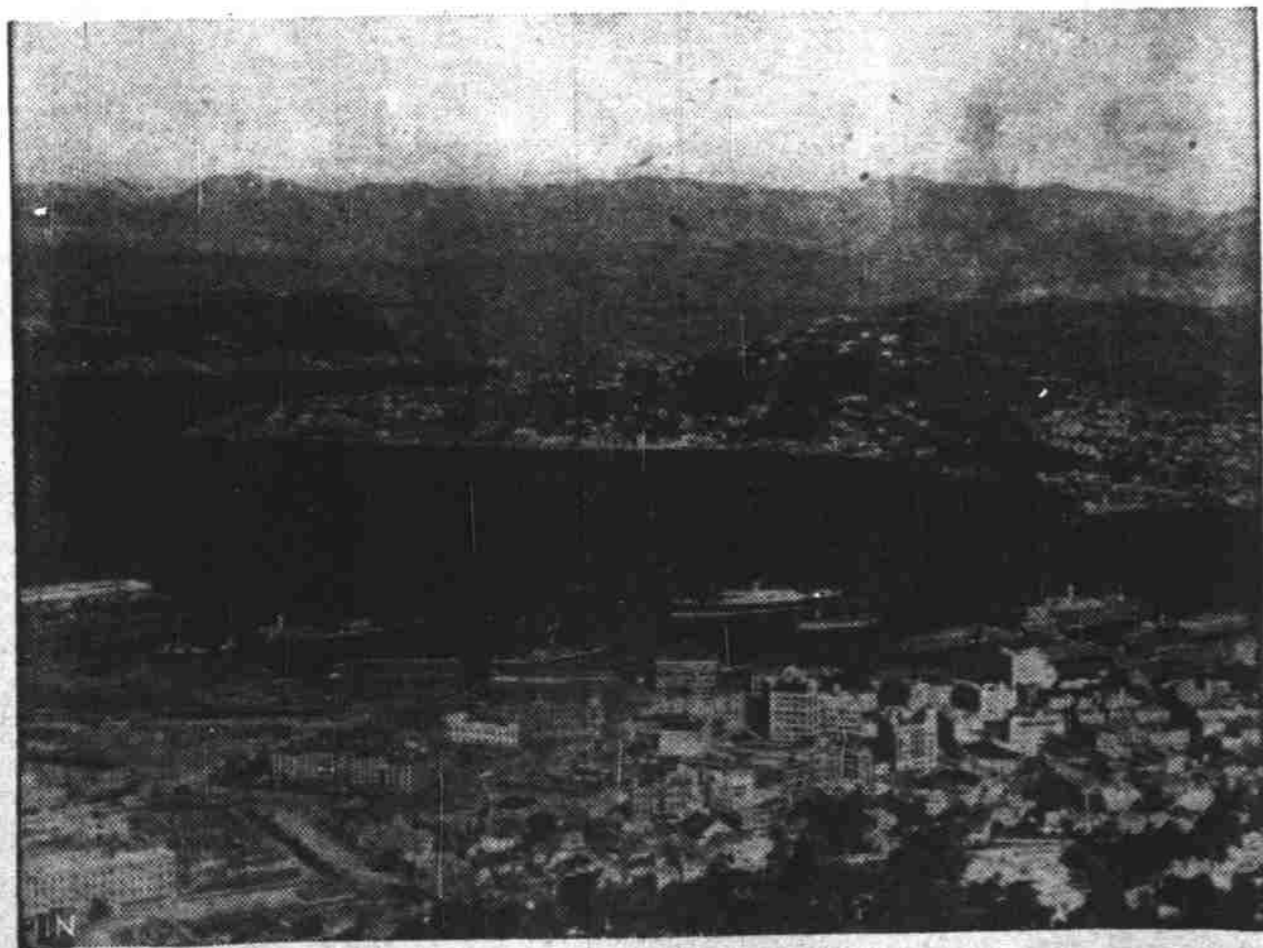
Loaded with bombs for "special delivery" to Jap bases in the Marshall-Gilbert Islands, a plane takes off from its carrier. The picture was made from the hangar deck of the carrier. Associated Press photo from Paramount News.



This is the type of fake money, printed by the Japs in Japan, that was used to flood the occupied territory in Malaya and probably in the Philippines as well. The \$1 bill is larger than the regular, genuine note. It lacks the picture of the king and tiger found on the genuine bill. This is also true of the \$5 bill below.



There was no let-up in the blasting that planes gave the Jap bases in the Marshall and Gilbert Islands. Here a plane (upper right) has just returned to its carrier, and bombs (in foreground) are already being wheeled out for reloading. Associated Press photo from Paramount News.



View of the harbor of Wellington, N. Z.

According to a report by the Christian Science Monitor, the U. S. naval forces have established a transpacific supply terminus at Wellington, New Zealand. The vanguard of a U. S. naval force has arrived at Wellington, shown above, according to the report. New Zealand is a self-governing British dominion about 1,200 miles eastward of Australia. Wellington is the capital.



Lillian Reynolds

Many holiday letters and greeting cards, mud-spattered and water-soaked when they went down with a warship in Pearl Harbor during the Japanese attack Dec. 7, are now being sorted and dried and forwarded to addresses by postal authorities in Honolulu. Lillian Reynolds is shown sorting some of the letters in Honolulu.



A navy dive bomber flies alongside her aircraft carrier during an offensive patrol somewhere in the Pacific.