

Official US Navy Photographs Airmailed To The Statesman



General view of people wandering about the mass graves at navy boys at the New Year's day memorial service. Nuuanu cemetery looking for relatives or some of the



Photo shows Japanese dive bomber approaching Pearl Harbor objective with diving flaps down. Pacific fleet gunners aboard ships in Pearl Harbor on the morning of Sunday, December 7, shot down more than 20 Japanese aircraft during the attack that put America into the war.

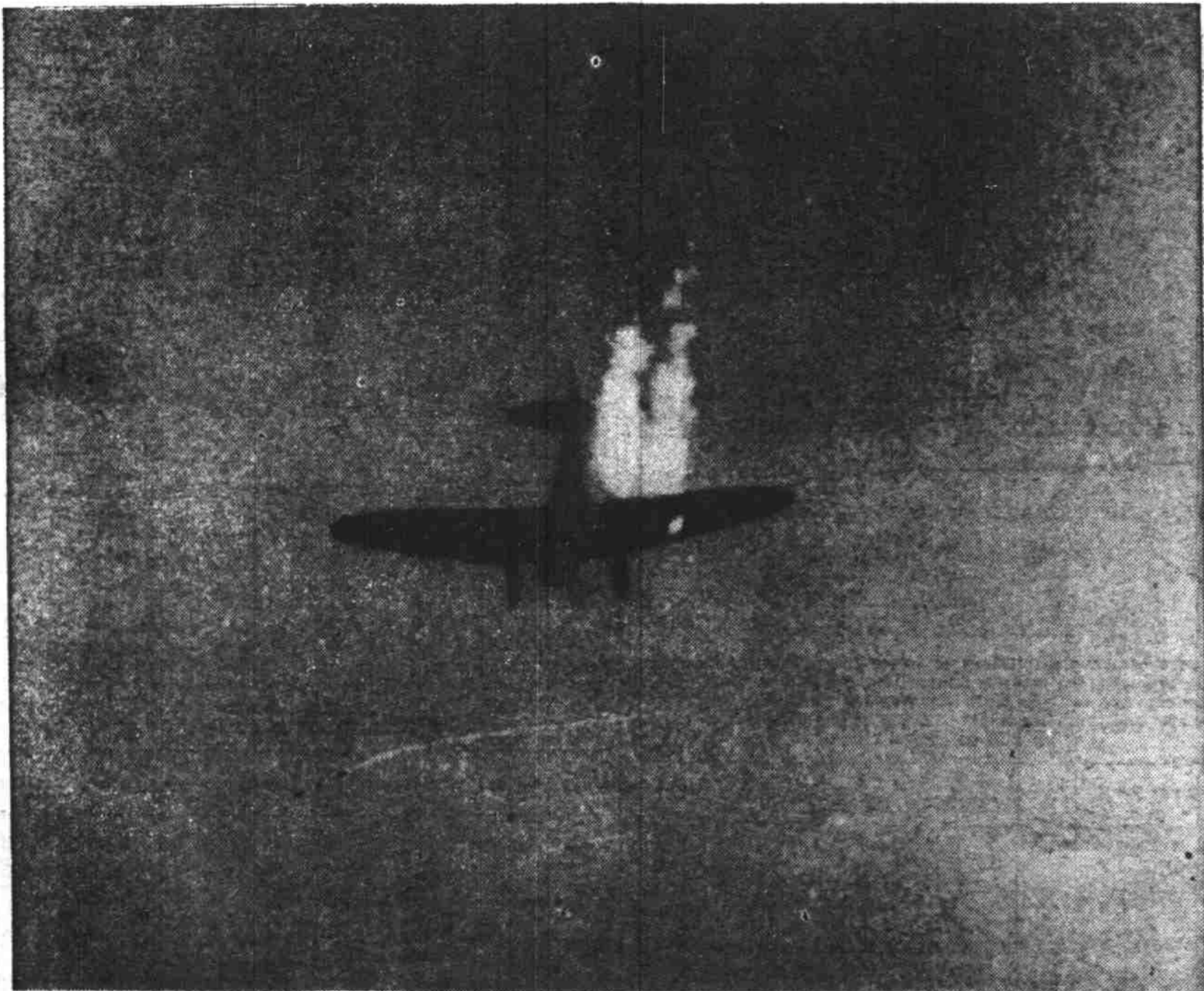


Photo shows Japanese dive bomber in flames over Pearl Harbor after hit by fleet anti-aircraft guns. This Japanese plane plunged to the bottom of Pearl Harbor.

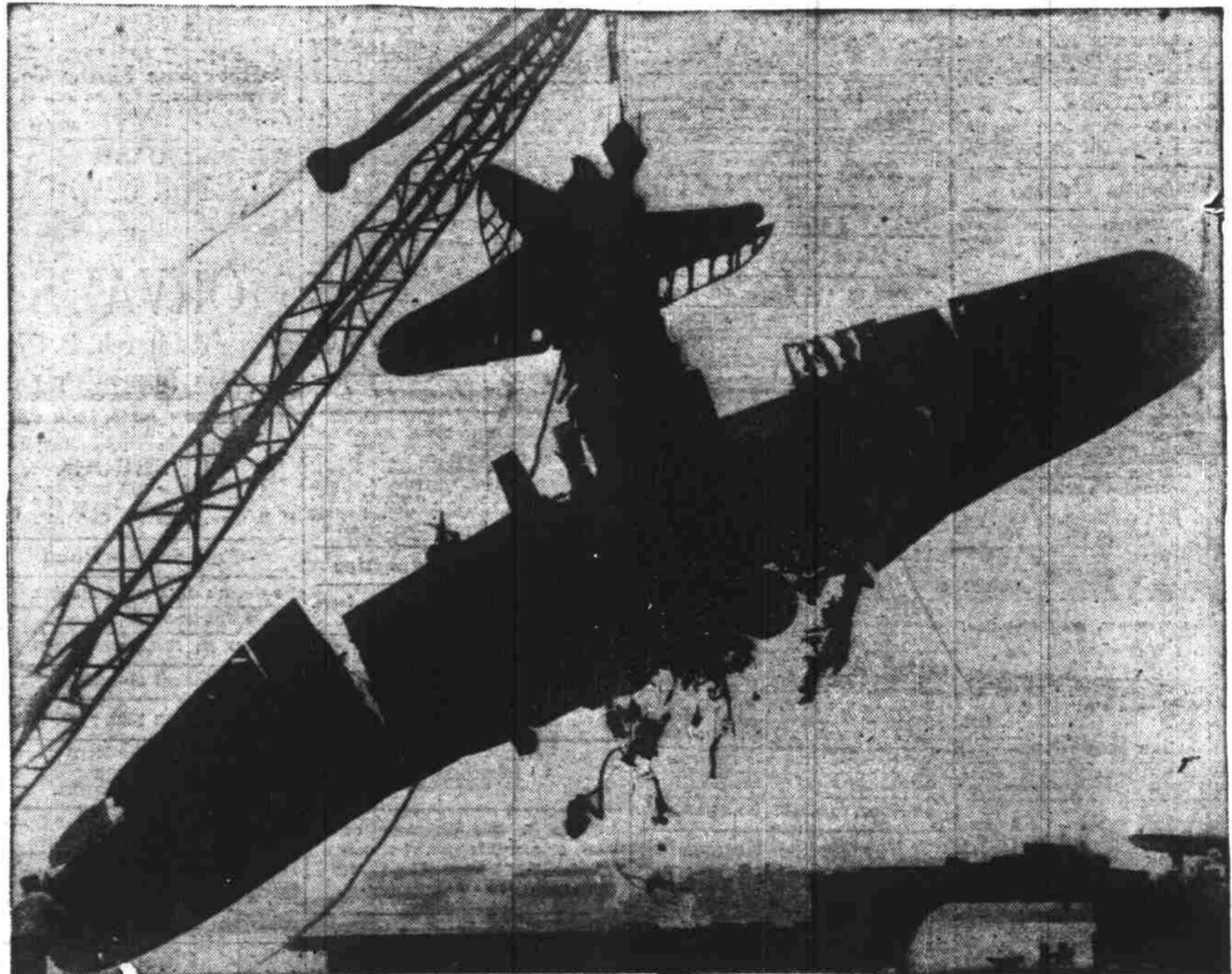
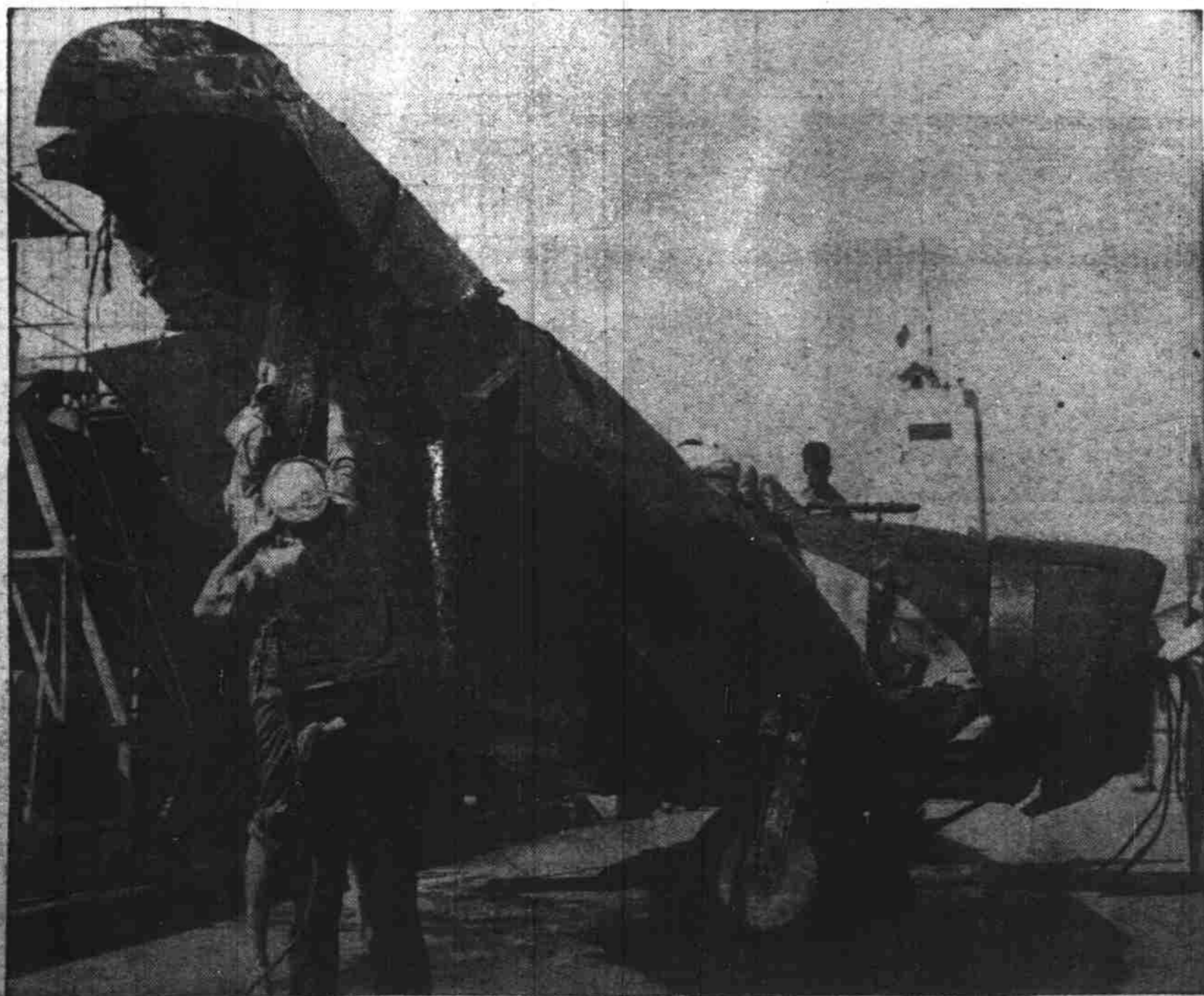


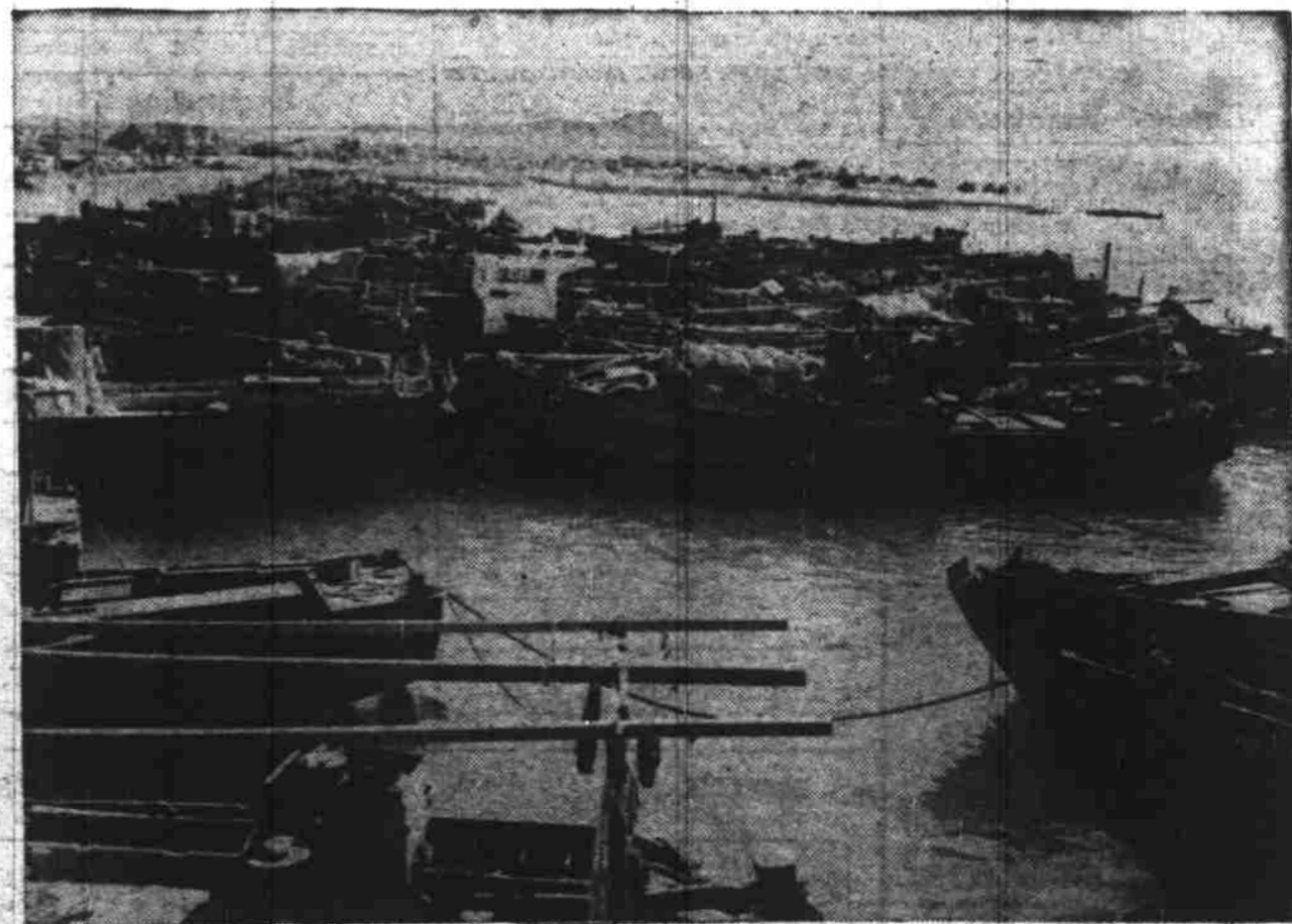
Photo shows wreckage of Japanese torpedo plane salvaged from the bottom of Pearl Harbor.



Seamen examine wreckage of Japanese torpedo plane shot down in Pearl Harbor on the morning of Sunday, December 7.



An official Tokyo broadcast said that Masaaki Hnuma (above), famous Japanese pilot, died of wounds received during attacks on northern Malaya.



Japanese fishing boats in the harbor of Honolulu were recently seized by the US navy. Those pictured above were taken over in Kewalo basin. They may be converted for use by the navy. Note names of boats. Included in the group are several large Diesel craft well equipped. Diamond Head shows in background.