

Stock Market Close Shaky

Tax Selling Causes Volume to Rise but Prices to Decline

NEW YORK, Dec. 20.—(AP)—The stock market Saturday finished another declining week slightly on the irregular side.

The Associated Press average of 60 issues was unchanged at 86 but showed a new loss of 9 of a point on the week.

Transfers of 628,550 shares compared with 629,310 a week ago and were the second largest for a Saturday since Dec. 28, 1914.

Gains were held by Bethlehem Steel, Santa Fe, Goodrich, Montgomery Ward, Douglas Aircraft, Kennecott, Standard Oil (NJ) Westinghouse, General Electric, Eastman Kodak and General Motors.

US Rubber preferred was an isolated weak spot, losing 5 1/2 points at 72 1/2, a new bottom for the move.

Salem Market Quotations

The prices below supplied by a local grocer are indicative of the daily market prices paid to growers by Salem buyers but are not guaranteed by The Statesman.

Table listing various market items like Apples, Beans, Butterfat, Eggs, and their respective prices.

"Strictly Private" By Quinn Hall



DEAR MOM— TELL MURIEL I'LL BE HOME FOR CHRISTMAS. THE SARGE SAYS I GOT TO KEEP UP MY TRAINING ROUTINE. THAT MEANS I'LL HAVE TO SPEND A LOTTA TIME WITH WEIGHTS AND DUMB-BELLS.

PS. IS MURIEL'S OLDER BROTHER STILL AROUND TOWN? (Signed) Lt. Charles Private Peter Plink

Farmers Go Above Quota

Pledges Show Aim of High Production Throughout State

Food and feed production by Oregon farmers will be far above present quotas next year, on the basis of pledges by 95 per cent of Oregon farmers, reported R. B. Taylor, Adams, chairman of the USDA defense board, according to the Associated Press.

Compilation of reports from all 36 counties showed promises to produce types of food, feed and seed particularly needed for war efforts here and abroad.

Percentage increases planned for 1942 over 1941 included: milk 19 per cent; milk cows 18; hogs 38; eggs 36; sheep 10; beef cattle to be marketed 12; sugar beets 31; corn 7; barley 61; rye for grain 17; hay 9; dry beans 63; fiber flax 5; flax seed 10; ryegrass 18; winter legume seed 33; vegetables 13, and farm gardens 11.

The acreage of cover seed crops is being increased in Oregon, which Taylor said was the only state asked to make up the goal, to meet demands in the south where winter legumes will help make up the nitrate shortage.

Taylor said farmers would need priorities on crawler type tractors and electric motors, but all equipment was getting so scarce that speed in repairing machinery and ordering necessary parts and new equipment was essential.

Quotations at Portland

Produce Exchange

PORTLAND, Ore., Dec. 20.—(AP)—Butter prints: A grade 38 1/2 in parchment wrappers 39 1/2, in cartons, B grade 37 1/2, in parchment wrappers 38 1/2, in cartons, C grade 36 1/2, in parchment wrappers 37 1/2, in cartons.

Portland Livestock

PORTLAND, Ore., Dec. 20.—(AP)—(USA)—Hogs: for week, salable 3450. Barrows and gilts— 10.75 @ 11.65. G-d, ch, 140-180 lbs. 11.35 @ 12.15.

Portland Grain

PORTLAND, Ore., Dec. 20.—(AP)—Wheat—Open High Low Close. Cash grain: Oats No. 2 38-40. Corn No. 2 45-48. Barley No. 2 34-35.

Grain Market Closes Higher

CHICAGO, Dec. 20.—(AP)—Soybean prices rose almost 6 cents a bushel at one stage, close to the limit permitted in Saturday's session, injecting strength as well as some life to the otherwise languid grain trade.

The wheat and corn advance was held to 1/2 cent, with investment and commercial trade remaining restricted because of uncertainty regarding price control legislation. Some buying was attributed to dealers covering previous short sales due to the action of beans, but milling and flour trade was quiet.

Wheat closed 1/2 cent higher than Friday, December 12.23, May \$1.25 3/4.

City Hall Fund Donors Listed

SILVERTON—The list of donors, pledging \$1720 toward the purchase of the city hall has been turned over to city officials and includes: Dr. P. A. Loar, \$100; R. G. Al-

Stocks and Bonds

December 20. Con. piled by The Associated Press. STOCK AVERAGES

Table showing stock averages for various indices like Dow Jones, S&P 500, etc.

Table showing bond averages for various types of bonds.

Advertisement for State Finance Co. offering loans. Text: "The money you need is available to you here and now. Inquire today at our convenient address about our personal loan service!"

Closing Quotations

NEW YORK, Dec. 20.—(AP)—Today's closing quotations:

Large table listing closing quotations for various commodities and stocks.

Defense Program Exceeded in 1942 Winter Wheat Crop

WASHINGTON, Dec. 19.—(AP)—A 1942 winter wheat crop of 630,913,000 bushels—or about 150,000,000 bushels in excess of the AAA production goals under the "food-for-defense" program—was said by the agriculture department today to be indicated, according to Associated Press report.

This estimate was based on factors affecting production which are measurable in the fall, such as seeded acreage, condition of the crop on December 1, rainfall and temperature to date, as related to yields in past years.

Because this year's record wheat supply of 1,348,000,000 bushels was sufficient to meet expected needs for nearly two years, the agriculture department sought a greatly reduced crop in 1942.

Plans called for a combined winter and spring wheat crop of about 650,000,000 bushels compared with 945,937,000 bushels harvested this year. A sharply reduced spring wheat crop of 175,000,000 bushels next year would give a total crop of 806,000,000 bushels or 156,000,000 bushels more than the government's goal.

Farmers themselves cooperated wholeheartedly with the wheat program, which called for a reduction of about 12 1/2 per cent in the seeded acreage. The 39,318,000 acres seeded this fall to winter wheat was 14 per cent below the 45,633,000 acres planted a year ago.

The department said unusually favorable weather was the factor responsible for the prospective overproduction. The December 1 condition of winter wheat was 87 per cent of normal, compared with 84 a year ago.

Present indications point to an average yield of 16 bushels per acre compared with 14.7 bushels this year and with an average of 11.8 bushels.

Officials emphasized that the indicated production might not be borne out, inasmuch as much could, happen between now and harvest time next June and July to lower prospects. However, past history had shown that when conditions were favorable in the fall and early winter, the crop usually turned out good.

Should production be about as indicated, officials said, it would be necessary to hold a grower referendum on marketing quotas.

One reason the department sought a reduced wheat crop was the fact that with present surpluses of grains, difficulty was being experienced in finding adequate storage facilities.

THE LONE RANGER



POLLY AND HER PALS



MICKY MOUSE



LITTLE ANNIE ROONEY



THIMBLE THEATRE—Starring Popeye



Prisoner in the Enemy Camp.



MICKEY MOUSE



LITTLE ANNIE ROONEY



THIMBLE THEATRE—Starring Popeye



By FRAN STRIKER



By CLIFF STERRET



By WALT DISNEY



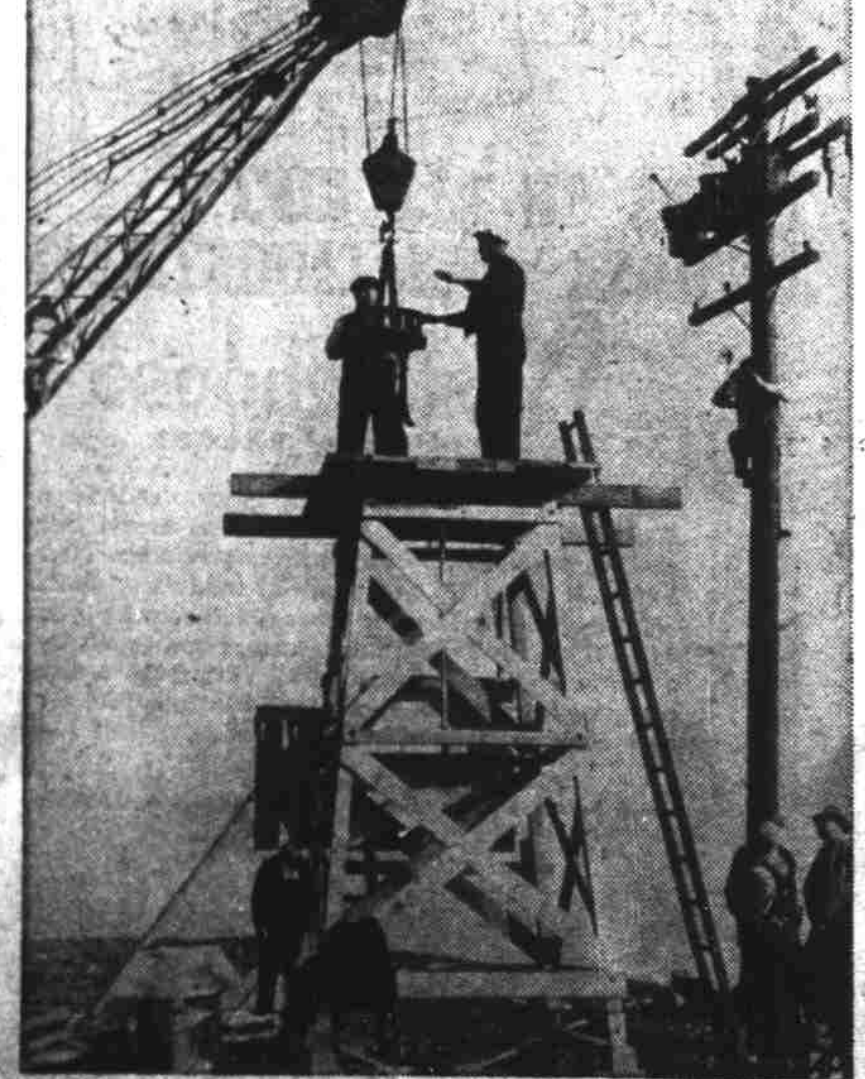
By BRANDON WALSH



"A Palsy Walsy Unmatched!"



San Francisco Air Raid Siren



A large siren, one of eight to be placed in San Francisco, is swung atop a platform on Twin Peaks, about 1000 feet above the city. This siren, seven others to be placed and three already in use are to be sounded simultaneously in event of air attack.

WANTED Walnut meals and Fibert meals. Cash on delivery. Highest price. MORRIS KLORFEIN Packing Co. 400 N. Front Tel. 7633