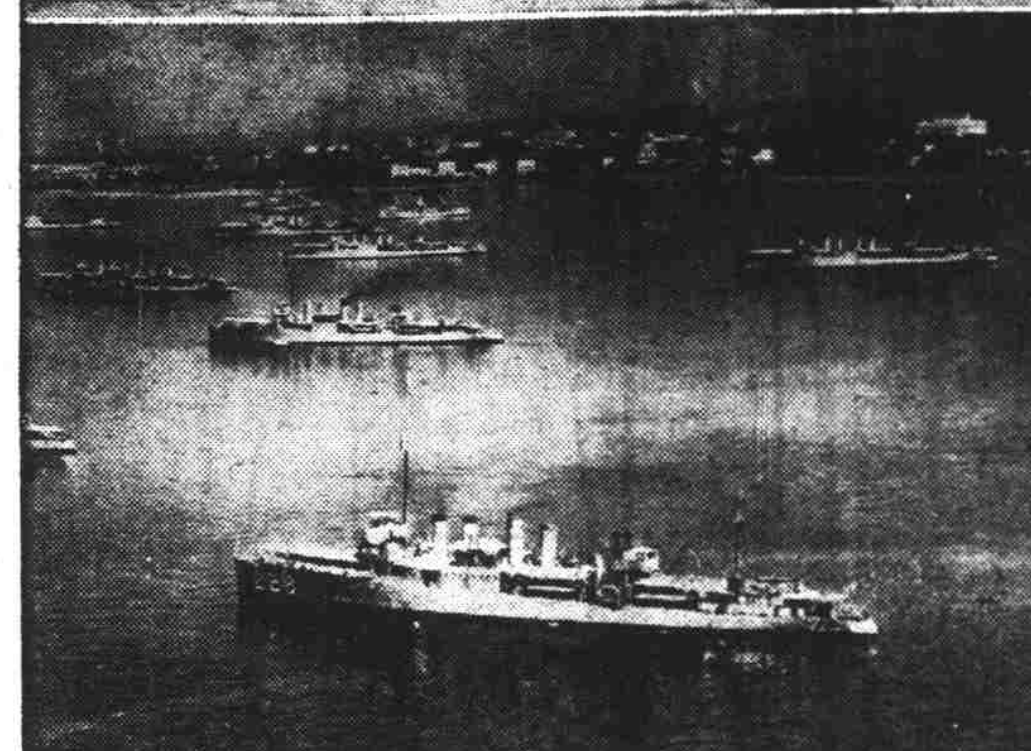
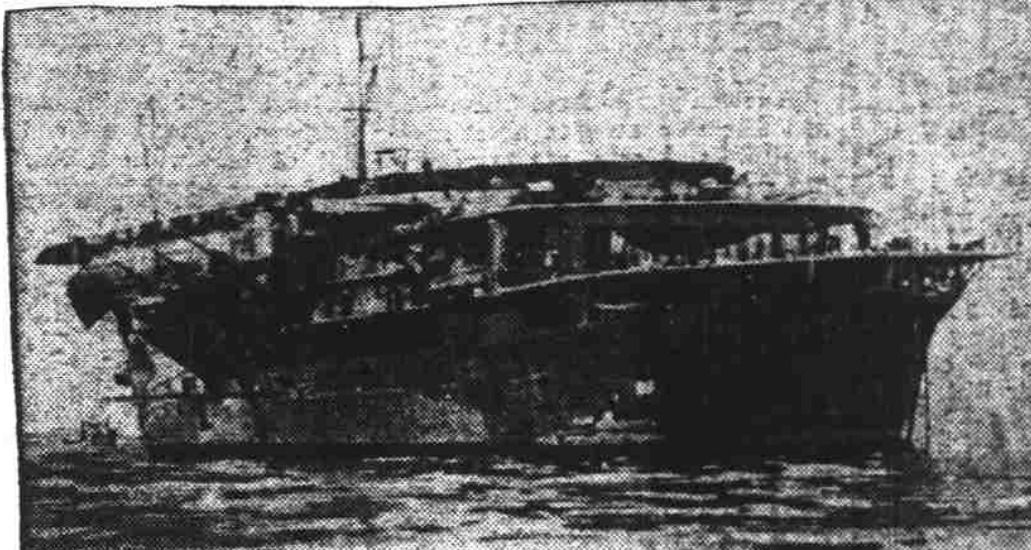


The Statesman's Photo Service Brings Latest Pictures Of War



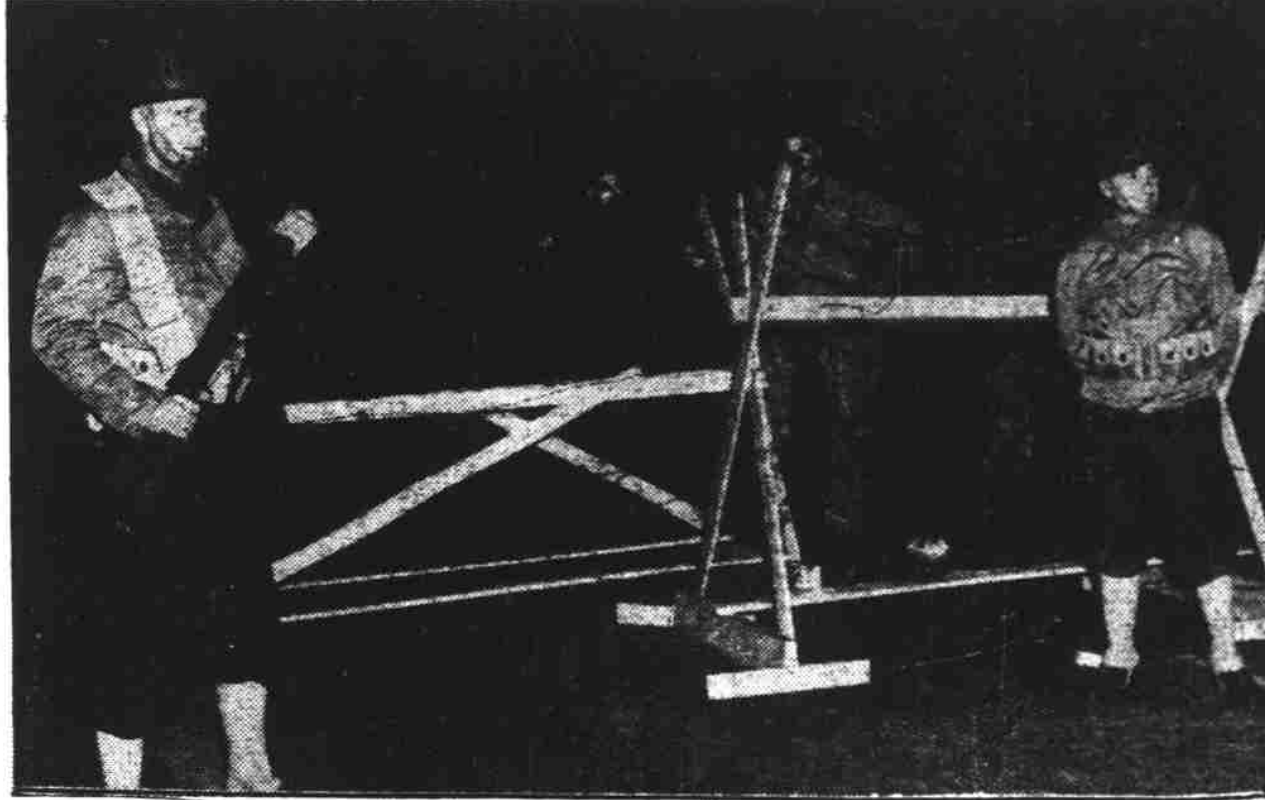
Armed soldiers as they patrolled one of the streets of the large Japanese settlement on Terminal Island, Los Angeles, are pictured while Japanese children look on. The navy has property on Terminal Island, which is across the bay from San Pedro. Terminal Island, also site of a new state prison, is the headquarters for many fishing boats manned by Japanese.



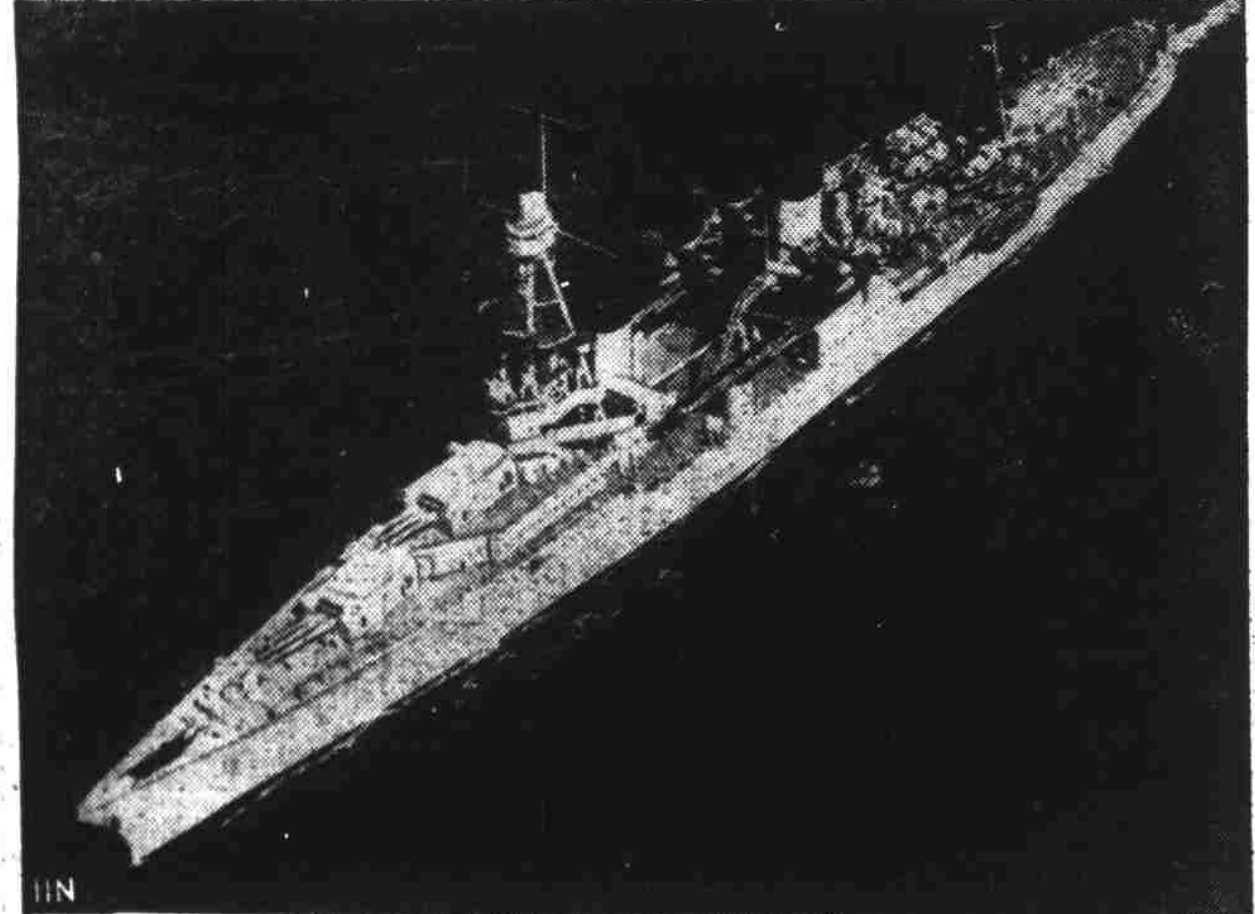
Shown above are the targets of Japanese bombers that winged in to sudden attacks on United States Pacific outposts. At upper left is the Japanese aircraft carrier Kaga, which possibly may be among those from which the Japanese were believed to have launched their attack on Hawaii. Pearl Harbor, the powerful American naval base near Honolulu, which the Japanese bombed, is pictured upper right. Approximately 350 soldiers were reported killed by a direct bomb hit on a barracks at Hickman Field, Hawaii, lower right, principal US army air base from which planes took off to fight the attackers. Part of the US Asiatic fleet is shown, lower left, at anchor in Manila harbor in the Philippines, also bombed.



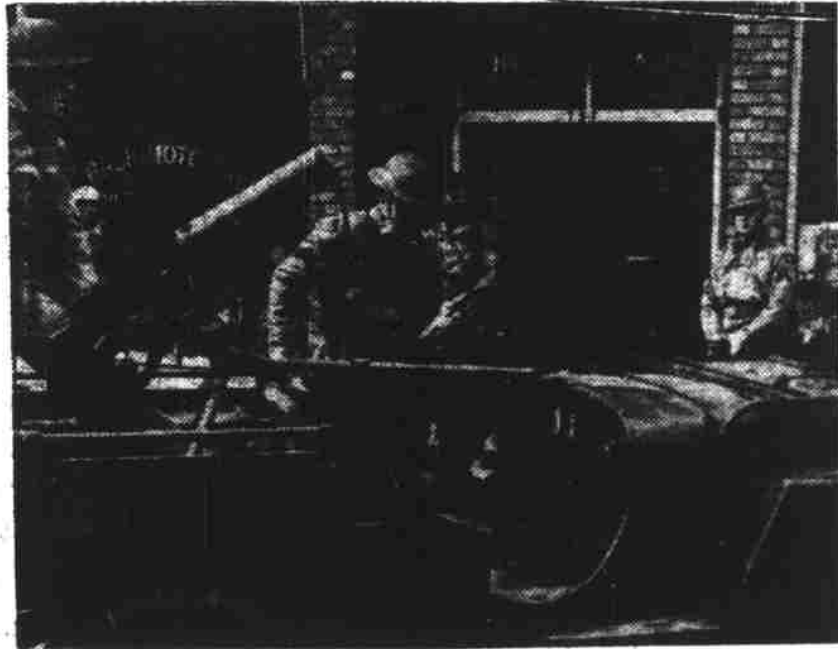
TRINIDAD BUILD-UP—On land so recently thick virgin forest in central Trinidad, living quarters for American civilians building a U.S. army base at Fort Read take shape in record time. Fort Read, which will soon be ready for full occupation by U.S. troops, is one of five sites in Trinidad selected for bases, as part of Uncle Sam's plan for better western hemispheric defense.



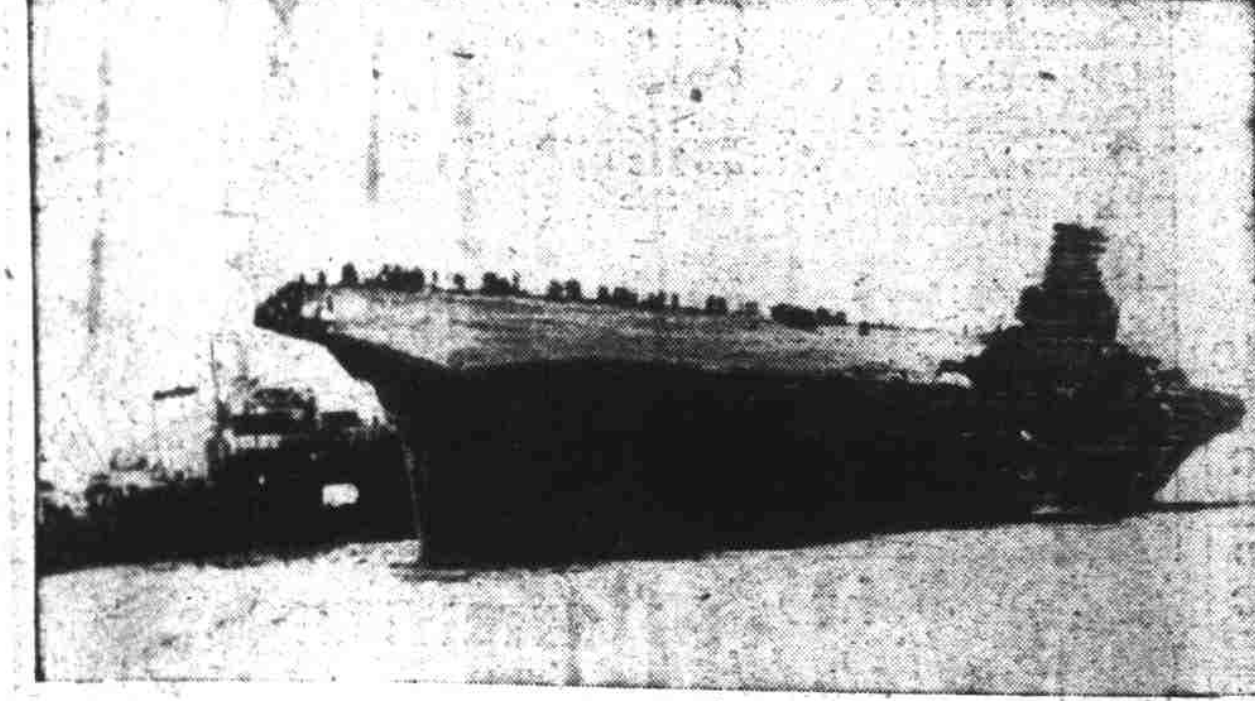
Member of the 502nd Parachute Battalion, Pvt. Charles Lankford landed in a tree during a chute "attack" on Maxton, N. C., airport. His chute caught in the branches, Lankford cut himself loose and jumped to the ground, where he landed uninjured. Official U. S. Army Signal Corps photo.



The U. S. S. Houston, under command of Admiral Thomas C. Hart, is the flagship of the Pacific fleet.



In Los Angeles United States troops rushed defense measures as the Battle of the Pacific rages at high pitch. Photo (top) shows soldiers guarding a barbed wire barricade in a street near the harbor. Many Japanese live in the harbor district. By order of the US government, Japanese alien-owned or operated shops in the Japanese Terminal Island settlement have been closed. Pictured (lower photo) is a jeep with machine gunners patrolling the streets to quell any demonstration against closing of these stores. Note closed sign on window in background. Japanese language newspapers in Seattle, San Francisco, Los Angeles and Honolulu were closed down and taken over by representatives of the treasury department.



—J. I. N. Cablephoto
Among the first pictures released by the British of the sinking of the aircraft carrier Ark Royal, this picture shows the ship listing badly before she went down off Gibraltar. Note the crew members standing on the edge of the flight deck, top. The Ark Royal was sunk by an Axis torpedo while being towed to port. Only one man of the crew of 1,600 lost his life. This is a cablephoto from London.



A Japanese in the American army at Camp Roberts, Calif., is pictured in the above Soundphoto as he reads "Japan Attacks Hawaii; US at War."



Sir Robert Craigie, Britain's ambassador to Japan.



Admiral Osami Nagano, chief of the Japanese naval general staff.



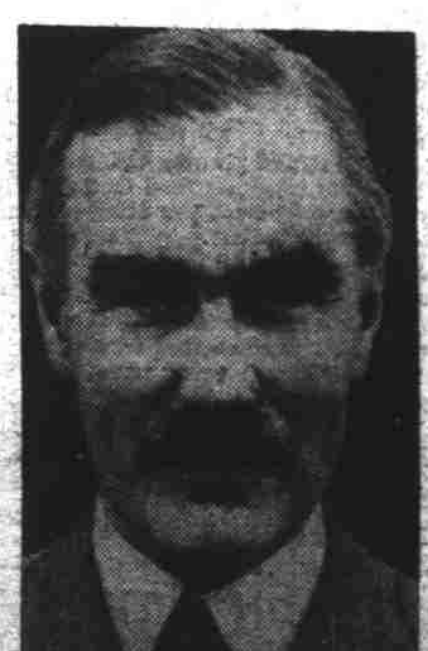
HARBOR IN BRAZIL—Scene in the harbor at Recife, port on the hump of the Brazilian Atlantic coast nearest Africa. Small boats reach quiet waters through swinging bridge (rear). Note the large ocean ship in the background at right.



Admiral Claude C. Bloch, commander of the 14th Naval district (Hawaii).



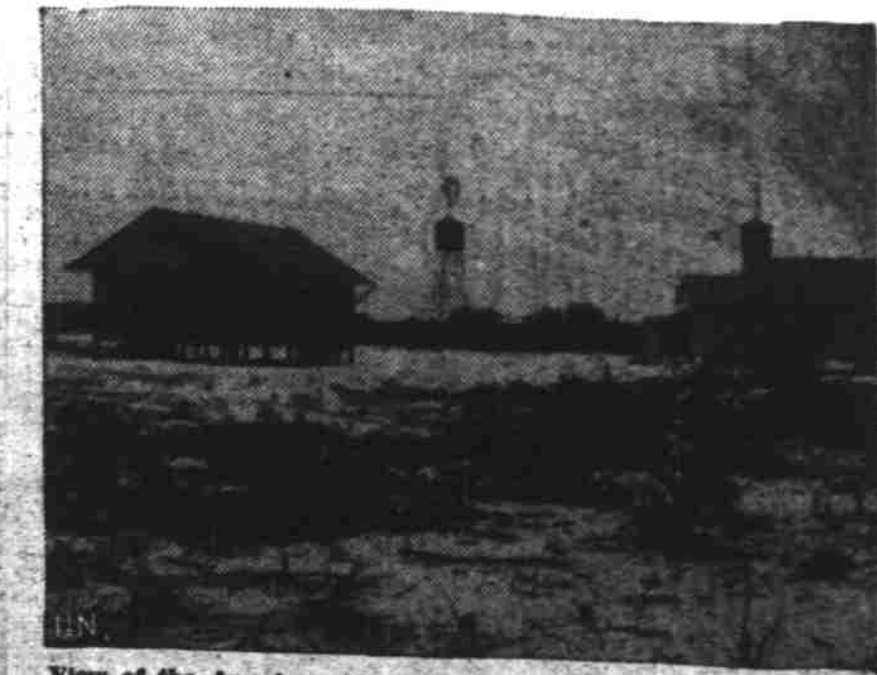
Lieut. Gen. Walter C. Short, commander of the Hawaiian department.



Joseph C. Grew, the U. S. ambassador to Japan.



Mighty coastal gun on the Hawaiian island of Oahu. This gun may have been used against the Japanese in their surprise attack on the United States Pacific base.



View of the American Airlines station on Wake Island, tiny U. S. possession in the mid-Pacific, reported taken by the Japanese. Wake Island has only one square mile land area. It lies 2,100 miles from Hawaii.