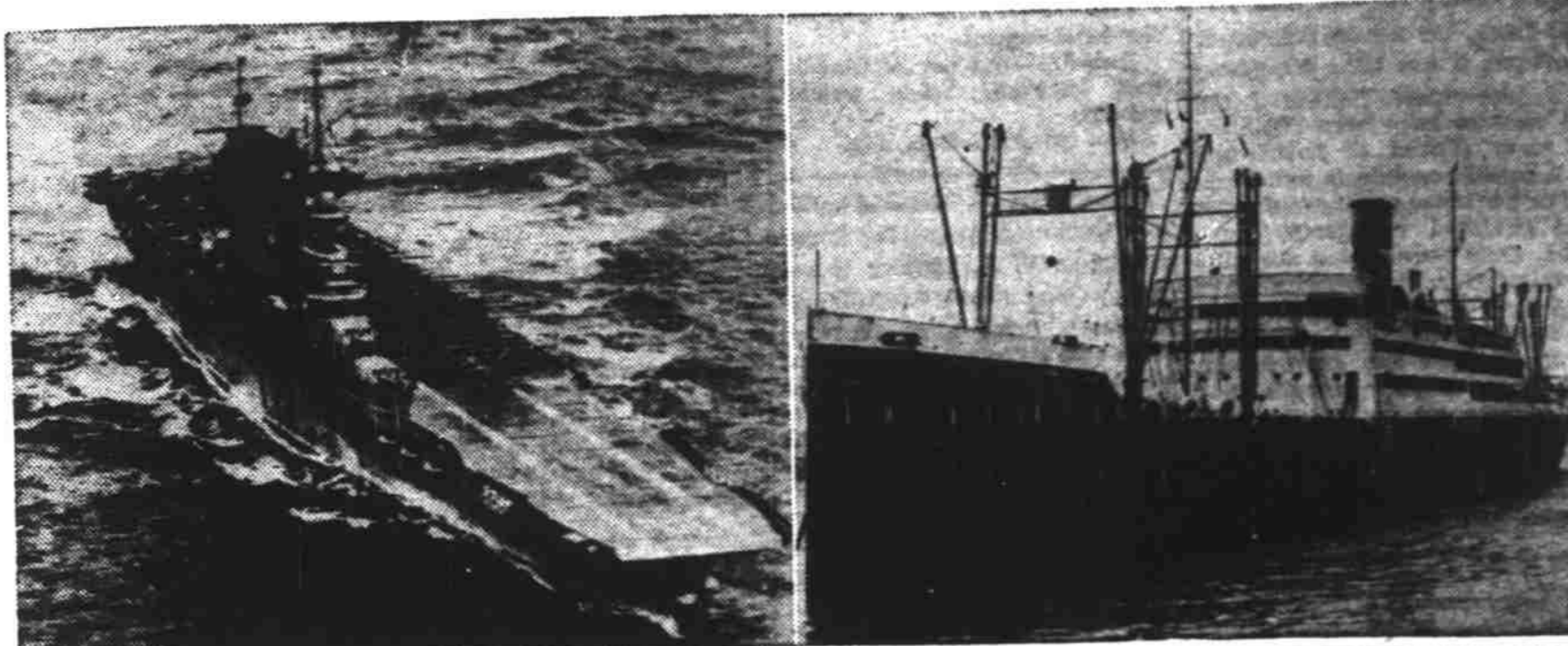
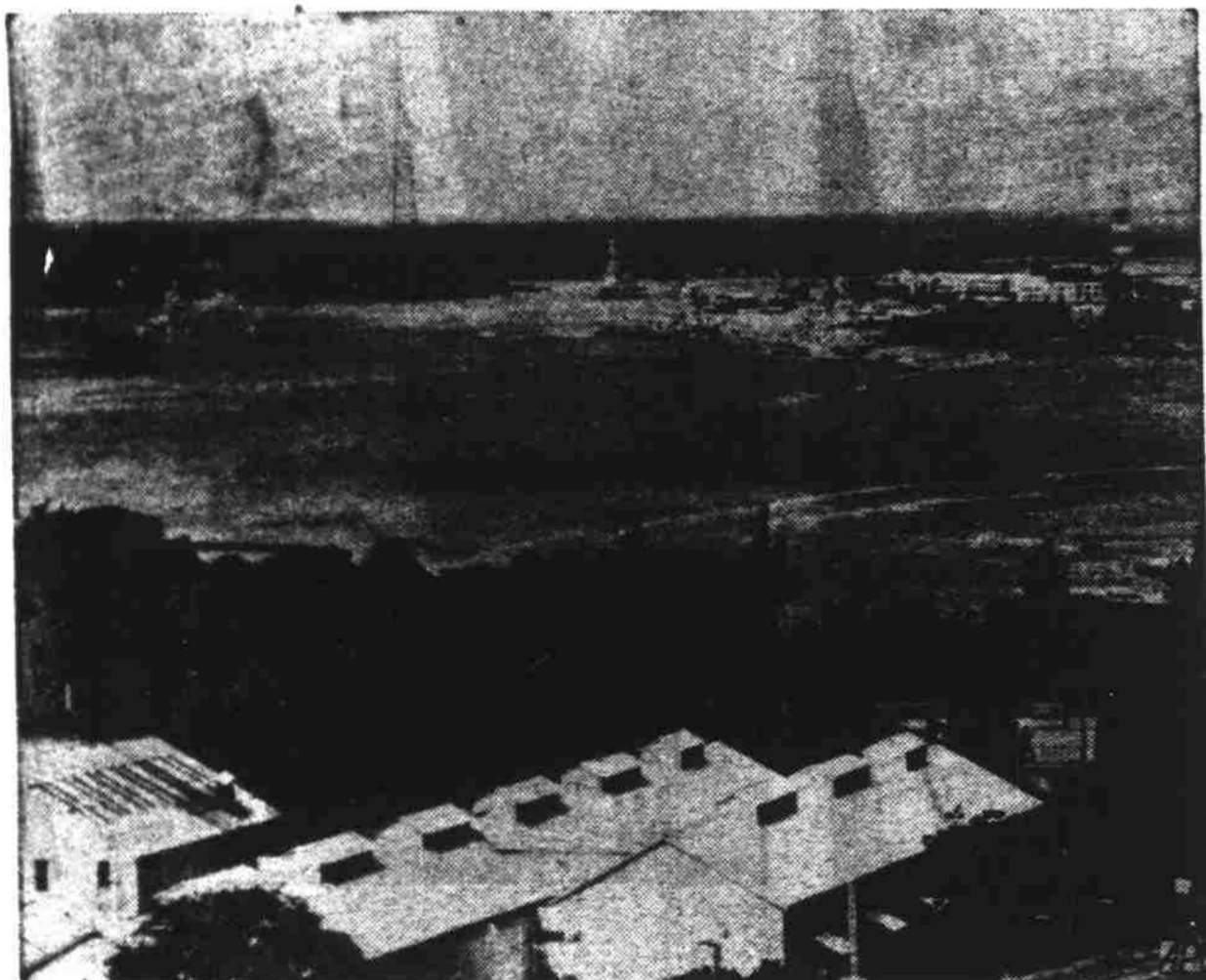


The Statesman's Photo Service Brings Latest Pictures Of War



Top left, the US aircraft Lexington, reported sunk in the attack on Pearl Harbor; top right, the liner President Harrison which was sent to China to evacuate Americans, reported either seized or sunk off Shanghai. Below, left to right, are General Douglas MacArthur, commander of all US army forces in the far east; Admiral Thomas C. Hart, commander-in-chief of the Asiatic fleet; Rear Admiral Husband E. Kimmel, commander-in-chief of the Pacific fleet, and Gov. Joseph B. Poindexter of Hawaii.

In complete detail, the map shows the vast arena in which the ABCD powers now are locked in a death struggle with Japan for supremacy in the Pacific ocean and the far east. From the hills of China's interior eastward to the area between Hawaii and the American mainland, fighting now rages between land forces, battle fleets and swarms of airplanes. Principal bases of the powers and the distances between them are indicated on the self-explanatory map above.



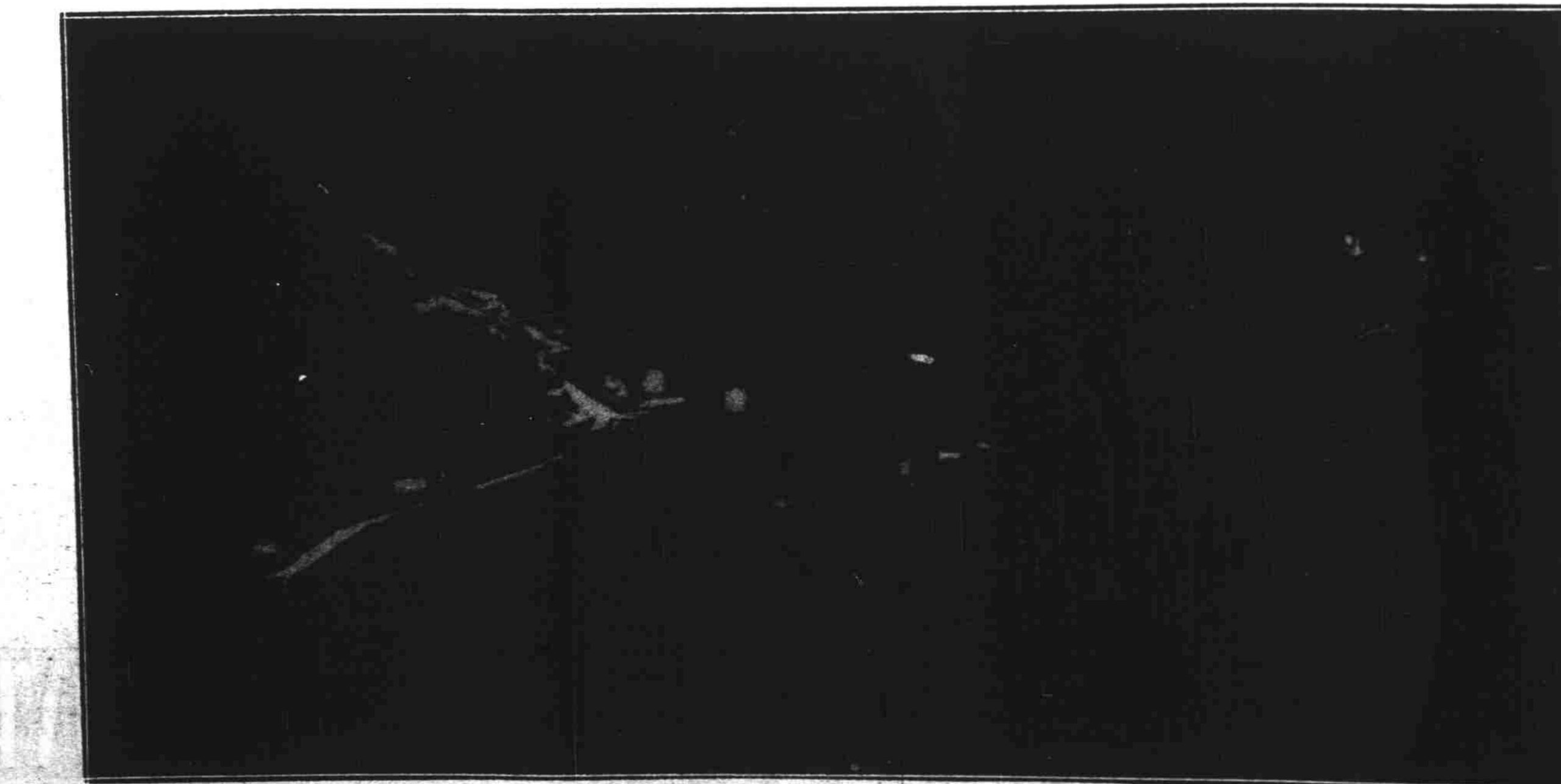
Units of the US fleet are seen based at Pearl Harbor, Hawaii. The White House announced that a Japanese planes had attacked this naval stronghold.



Here, in the San Francisco plotting room of the Fourth interceptor command, which embraces an area extending from Fresno to Redding, all information on planes in the air is coordinated. Reports of observers throughout the area are checked and the activities of each plane charted. In event of attack airfields and defense commands are notified of position of enemy planes.

U.S. AND JAPANESE NAVAL STRENGTH		
	U. S.	JAPAN
BATTLESHIPS	17	12
AIRCRAFT CARRIERS	7	8
CRUISERS	37	46
DESTROYERS	170	125
SUBMARINES	113	71
TOTAL	344	262

This chart shows the relative naval strength in ships of the United States and Japanese navies based on available information late in 1941.



San Francisco was blacked-out, supposedly, when this photo was taken from Twin Peaks, but Japanese bombers flying over would have been impressed with the blazing ribbon of light, Market street, a perfect target. Throughout the remainder of the city, the blackout was reported as ineffective as here. The city has had numerous air raid alarms.