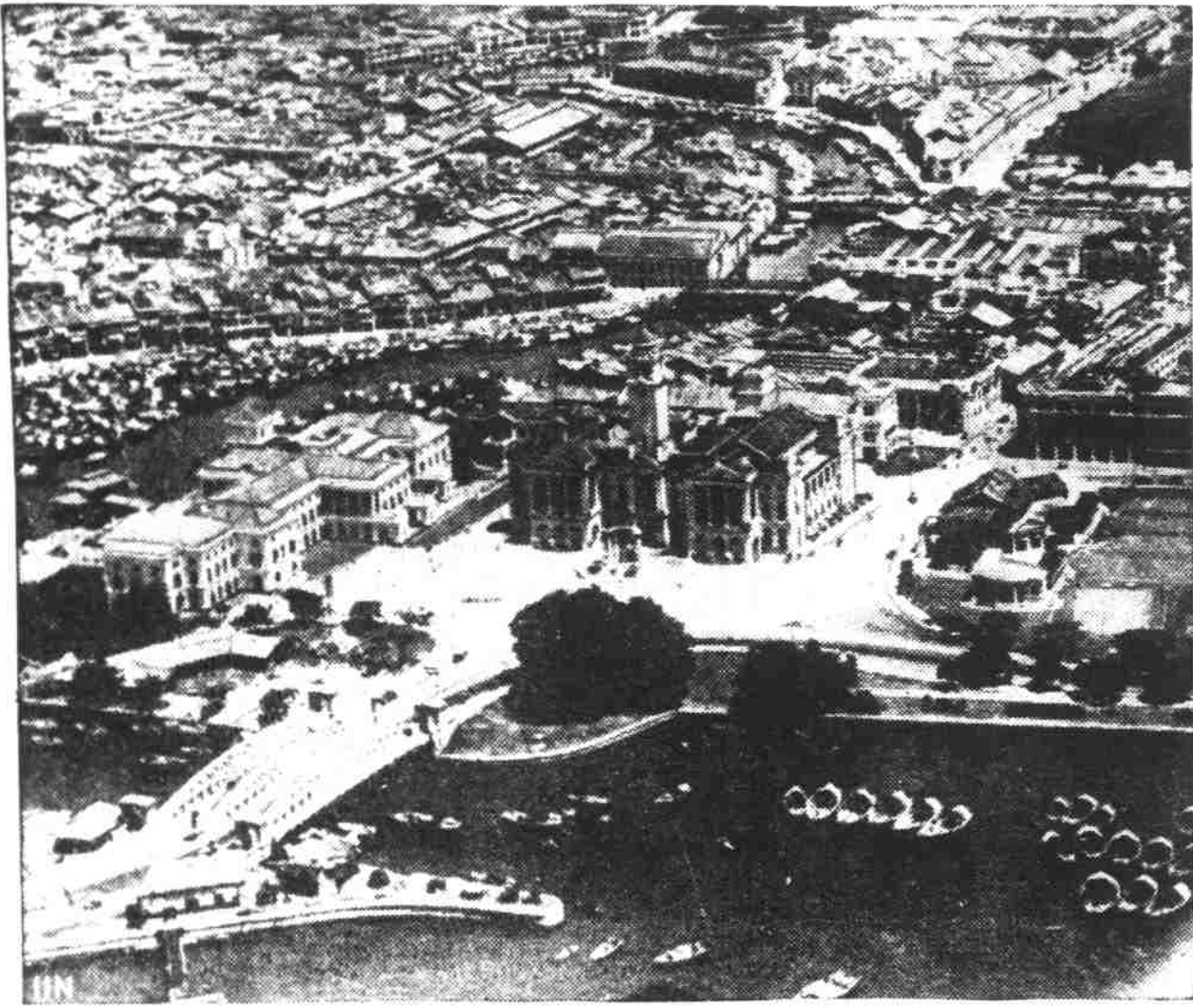
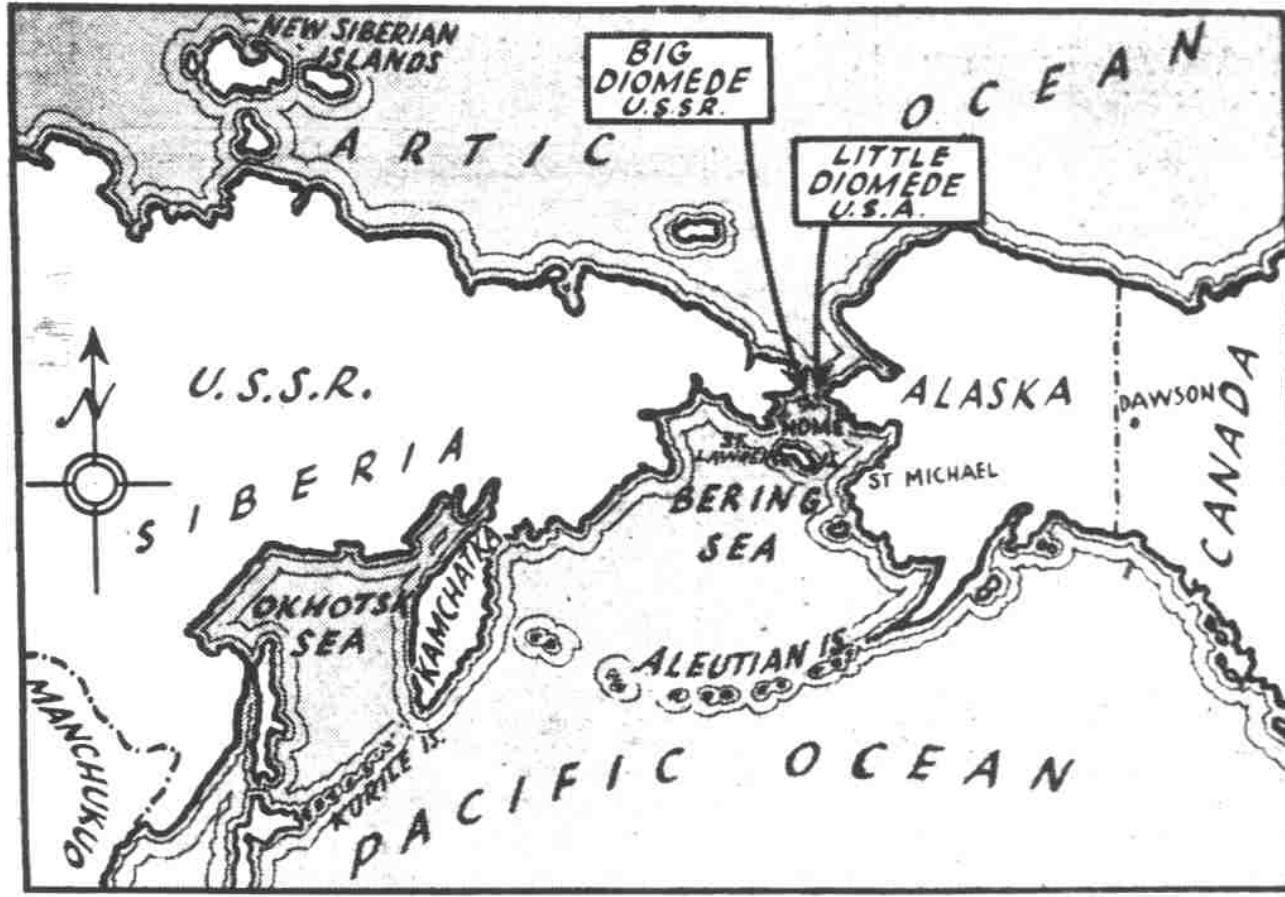


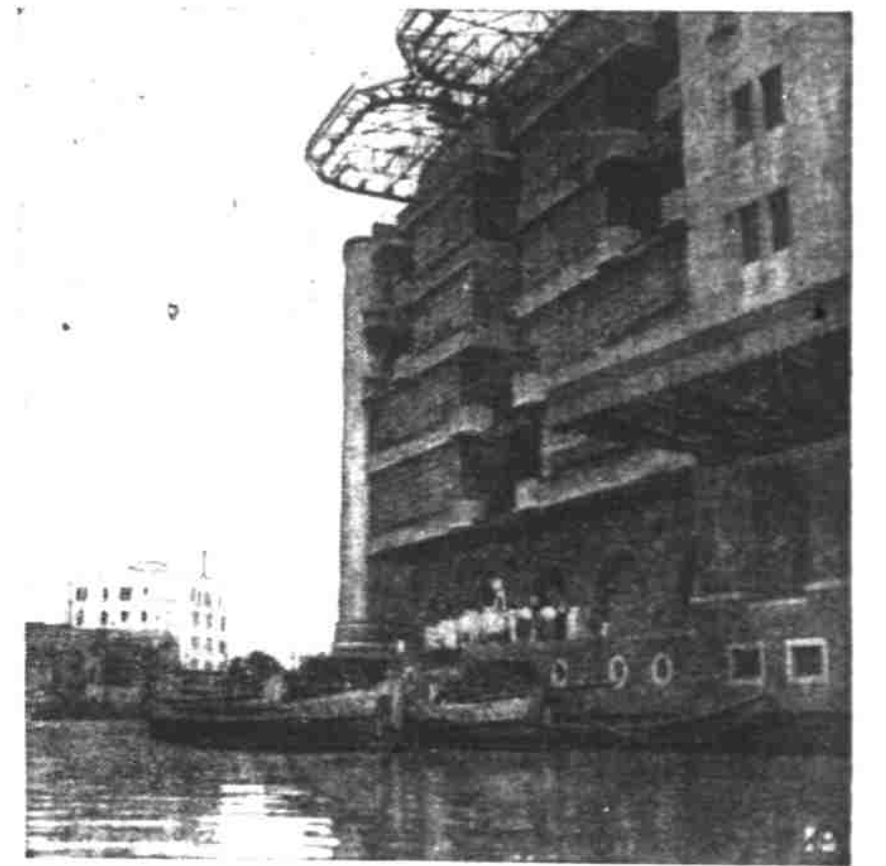
# War Comes to the Pacific; High Spots Shown Here in Pictures



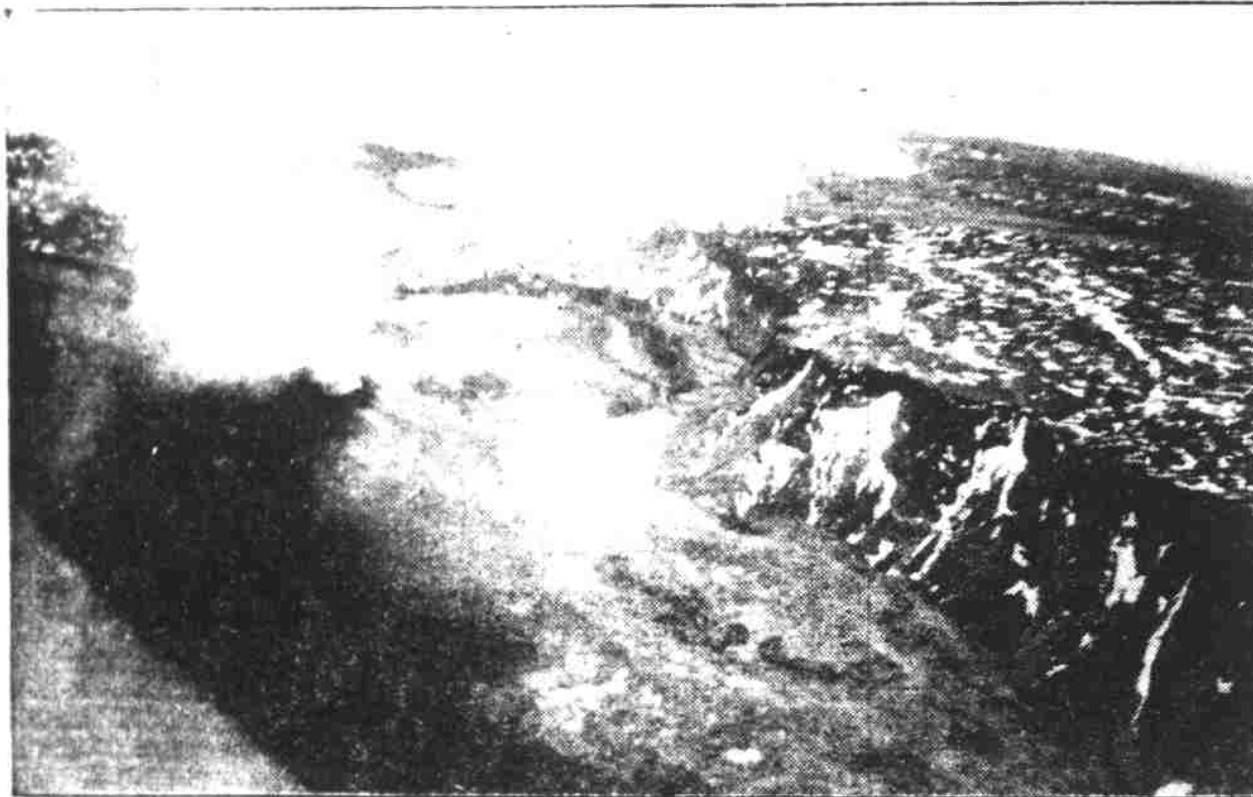
Long-threatened hostilities between Britain and Japan for control of the far east's wealth became an actuality Sunday when Nippon declared war on the United States and Britain. Base of the bulk of the latter's military, naval and aerial operations in the region is Singapore, in the Straits Settlements, shown here. The "Gibraltar" of the east has for months been the home of a large part of the navy, ready for anything.



Northern edge of the possible Pacific battle area is Alaska, US possession whose Aleutian Islands stretch far out toward Japan, whose northern island is pictured. The Diomedes Islands were the subject a year ago of rumors on Russian military operations.



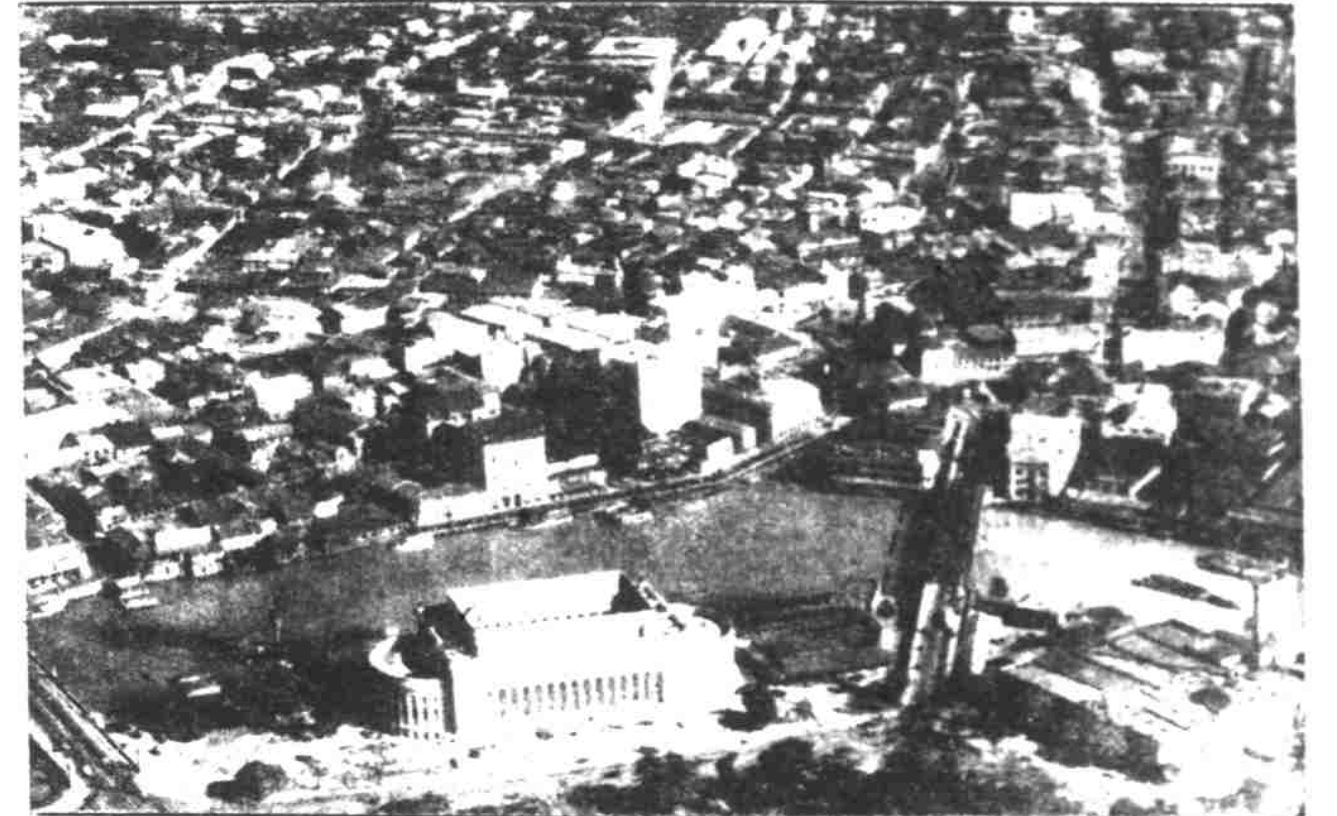
Another of Tokyo's highly modern structures is the warehouse shown in this picture. It faces on one of the many canals which thread the capital.



Greatest volcano region in the world is the Pacific ocean, where eruptions frequently cause the birth and extinction of whole islands. Nearly all countries directly affected by the outbreak of war Sunday are dotted with the lava-spouting mountains. One of the most famous is Mauna Loa, above, shown in eruption in Hawaii.



How territory of the world's powers is distributed in the orient is clearly shown by this map of the area southeast of China. Japanese holdings are indicated by horizontal markings; those of the United States by cross-hatching, and the extensive possessions of the Netherlands in solid black. Japan has for some time evidenced designs on the Dutch East Indies, whose home government was driven from the Netherlands by axis-partner Germany.



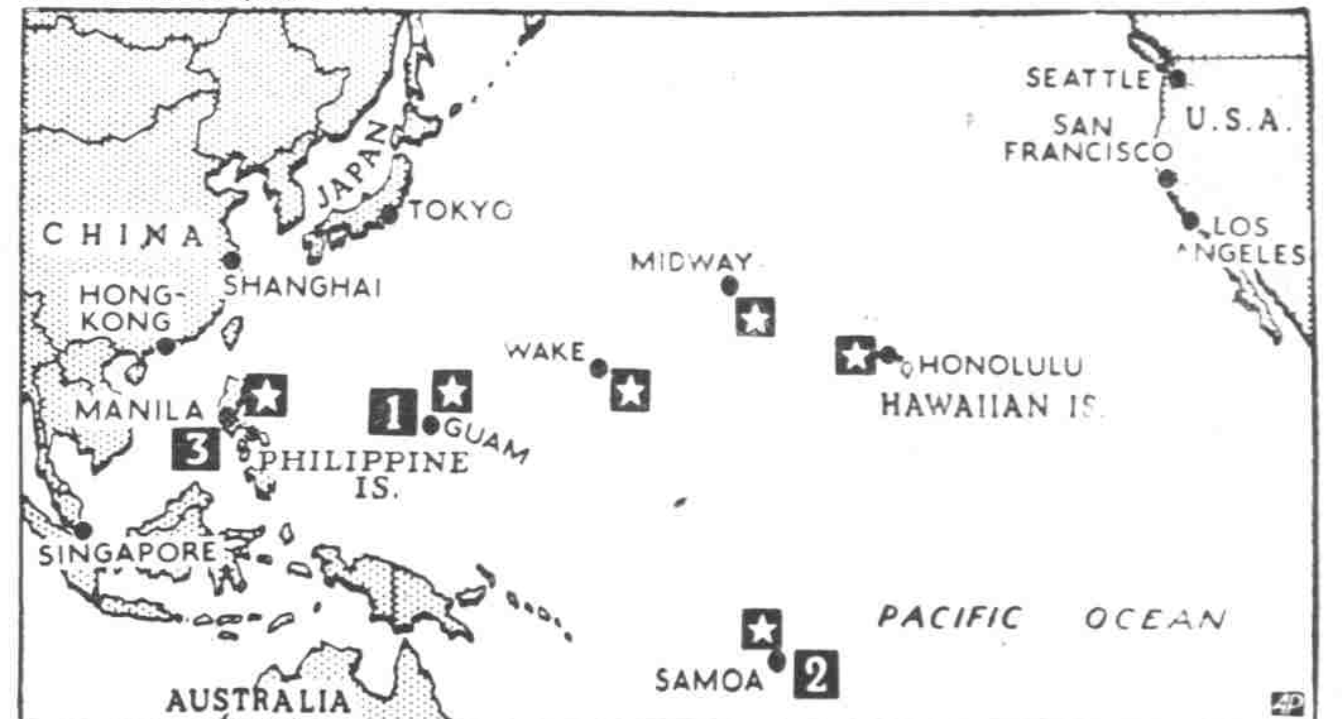
Manila is the chief city of the Philippine Islands, former US possession only a short distance from Japan. No verification was made of aerial attacks on the city, but parts of the island were reportedly bombed Sunday. This view shows the harbor, with the city in the background.



Orders for Nipponese action against the United States in the Pacific ocean Sunday, and subsequent declaration of war, were issued from Tokyo, seat of government of Japan. Its modern business buildings are shown in this picture.



Although Japan has threatened Britain's huge military and naval base at Singapore, outbreak of war between the powers puts the city in immediate danger. Its short distance of 500 miles from Saigon, in Japanese-held Indo-China, is shown by this map.

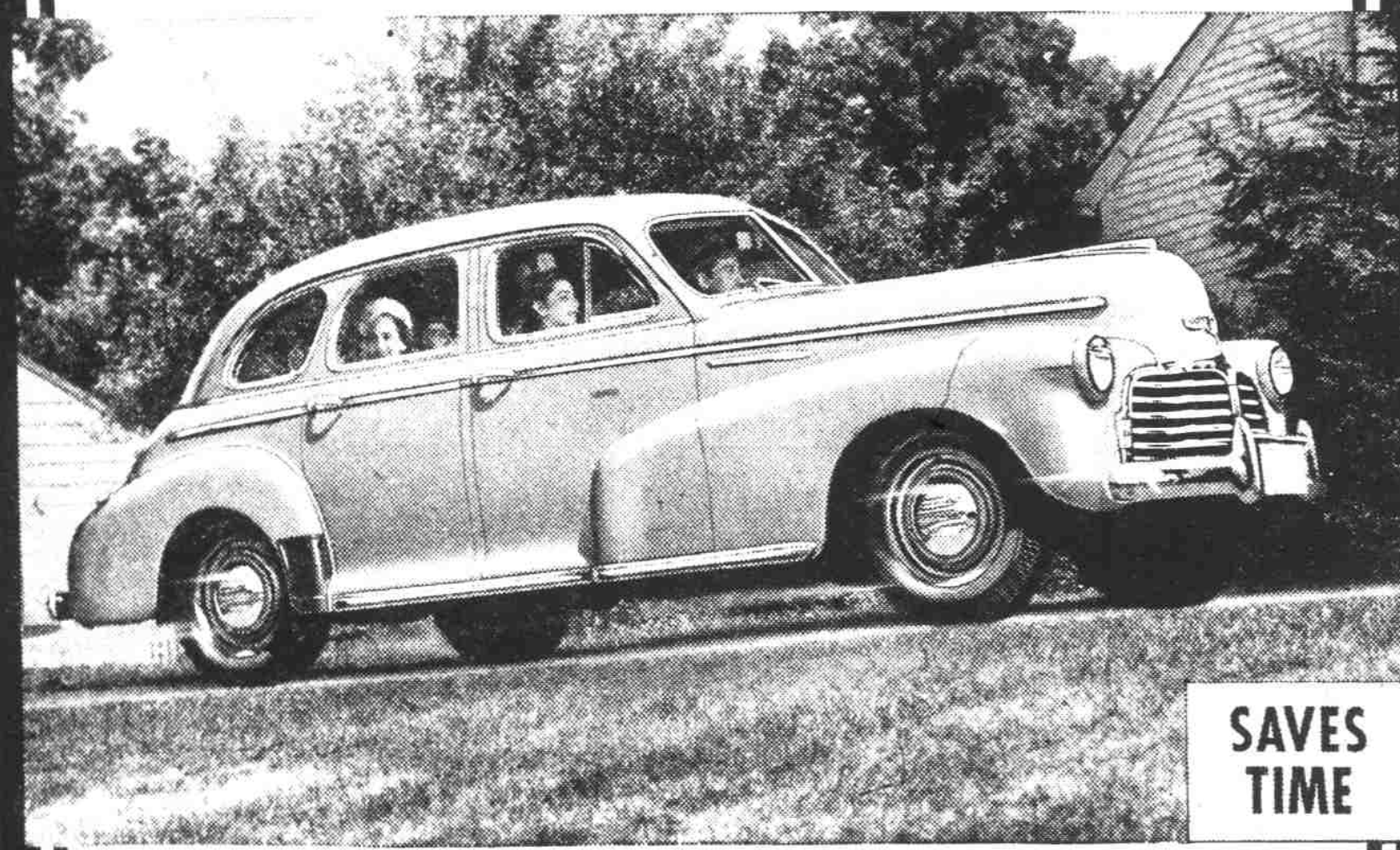


The broad span of the Pacific ocean, on which war broke out Sunday, displays here important islands owned by the United States. Going from east to west, the Hawaiian group dominated the news reports with first indications of attack. Midway is the next jump on the Clipper schedule. Wake island was reported to have been taken over peacefully by Japanese. Base of the airways at Guam (1) was bombed Sunday. Samoa (2) was one of the few points not reporting attack. The Philippine island (3) suffered a stare of the Japanese surprise forays, with some bombing.



American wings and these cadets from the University of the Philippines helped the Commonwealth celebrate the sixth anniversary of its birth, recently in a peace-time parade. Since late July all island and air forces of the Pacific Islands have been grouped under the command of Gen. Douglas MacArthur, former chief of staff of the US army.

## THE FINEST CHEVROLET OF ALL TIME



SAVES TIME

SAVES ENERGY

SAVES MONEY

SAVES OIL

SAVES GAS

SAVES UPKEEP

TODAY—WHEN ECONOMY IS THE WATCHWORD . . .

### WHY PAY MORE?

(than Chevrolet's low prices)

### WHY ACCEPT LESS?

(than Chevrolet's high quality)



FOR THE SERVICE OF AMERICA

IT PAYS TO BUY THE LEADER AND GET THE LEADING BUY

## Douglas McKay Chevrolet Co.

430 N. Commercial St.

Salem, Oregon