

### Cast of 'Meet the Wife' Set For Annual Elks Production

Something of the "madhouse" atmosphere which tradition associates with the pre-opening night phases of dramatic production, prevailed around the Elks' Temple auditorium as the Elks' show cast went through final rehearsals for "Meet the Wife" which opens Tuesday for a three-night stand.

For not only were actors and actresses testing out their inflections and perfecting their "business," but within easy hearing distance the Elks' orchestra was simultaneously rehearsing its part of the show together with a trio of Williamette university vocalists who will be heard between acts.

But that wasn't the worst of it, for backstage, and as often as not on it, the distracting sounds of hammering and sawing were jumbled with the lines of the play, and members of the cast frequently had to shout to give their companions the next one.

Audiences attending "Meet the Wife" will see a brand new stage setting. In the play it's "the house that Gertrude built" but actually it was constructed by Elks handy with tools, chief credit belonging to Jack Cherrington and Joe Kraeger.

Joe Felton, general chairman of the Elks' committee in charge of production, reports that the ticket sale to date has exceeded that of recent years. A fourth performance may be necessary as in some recent years. Officially, the annual charity show is scheduled for Tuesday, Wednesday and Thursday night.

### Winner of Range Is Announced

Bleary-eyed and tottering, after reading more than 2000 entries in the big Oregon Statesman Cooking School-Hotpoint Range contest, the judges decided late Saturday afternoon that the winning answer was created by Mrs. Jean Manning, of 322 Oak street in Salem.

Mrs. Manning's answer wins for her a new 1942 Hotpoint electric range from the H. L. Stiff Furniture company, Salem dealer.

"We wish to express our sincere appreciation to all the women who brought in completed contest blanks," stated Stiff, "and it is our sincere regret that we are able to give but one range as every one of the compositions indicated a great deal of effort was expended upon them."

### Pre-Inventory Sale



#### Buy Now

Save at least 5% on Kelly Tires, Willard Batteries, Auto Altimeters, Hill Climax, Accessories and R. N. NASON Paints.

R. D. Woodrow

Entire stock must be reduced before Jan. 1st, 1942. Special prices to Dealers.

R. D. Woodrow  
394 N. Church St. - Phone 9600  
Salem, Ore.

### Auto License Salvage Out

Salvage of old automobile license plates, as a conservation measure, is impractical due to the cost of collection, transportation and reconditioning, Secretary of State Earl Snell declared here Saturday.

Snell said his statement was based on a study conducted by the American Association of Motor Vehicle Administrators.

Costs attendant to the process of reclaiming steel from old license plates was said to be in itself nearly equal to the cost of the material. Added to this expense would be the cost of collecting the old plates, preparing them for shipment, and transporting them to reprocessing mills.

### 4M Christmas Party Set for Tuesday

MACLEAY — The annual 4M Christmas party will be held at the grange hall Tuesday. There will be a no host dinner

### Unions Purchase First Health Bond in State



Lloyd A. McFarland, representing the Paper Makers Capitol local 230 presents a check to R. L. Elfstrom, Salem Christmas seal sale chairman for a \$100 health bond as the Salem central trade and labor council made the first bond purchase in Oregon. From left to right are pictured George H. McKenzie, Pulp and Sulphite union 163, Elfstrom, McFarland, Herb Barker, secretary of Salem central trades and labor council, and Johnny Graybill, Teamsters local 324.

### Salem Labor Council Buys Health Bond

Initial purchase of a \$100 health bond in Oregon was made by the Salem Central Trades and Labor Council, Mrs. George Moorhead, executive secretary of the Marion county health association, announced Saturday. Health bonds are issued by the National tuberculosis association, and funds derived from their sales are used for the same purpose as Christmas seal income.

Union locals who have made contributions toward this first and other bonds are Pulp and Sulphite union 163, Paper Makers Capitol local 230, Teamsters 324, Musicians 315, Operating Engineers 879, Butchers 280, Label League, Roofers 109, Textile Workers 2050, Retail Clerks 992, Building Laborers and Hod Carriers 441.

Marion county receipts from the sale of Christmas seals to organizations and to individuals to date total \$3259.37, from bonds, \$706.

at noon, with the husbands as guests, and an exchange of presents for both men and women in the afternoon.

### School Will Hear Timber Man Speak

Salem elementary school teachers will hear Roderic Olzendam of the Weyerhaeuser Timber company of Tacoma speak on timber resources Wednesday at 4 p. m. at Washington school, according to the weekly school calendar released from Superintendent Frank B. Bennett's office.

A safety film is scheduled for Grant students Tuesday at 9:10 a. m.

Schedule for the week: Monday: 6:30 p. m. Leslie PTA dinner and meeting with Miss Mabel C. Mack of Oregon State college giving a talk on "Importance of School Lunches in National Defense"; 8 p. m. boys health and physical education department meeting at administration office.

Tuesday: 9:10 a. m. safety film at Grant school; 2:30 p. m. third and fourth grade arithmetic committee meeting at administration office; 7:30 p. m. school board meeting at administration office.

Wednesday: 1 p. m. Richmond school assembly, verse choir and choral reading, sixth grade in charge; 1 p. m. Garfield assembly, third grade in charge; 1 p. m. Highland assembly, Miss Murray in charge; home economics bazaar at senior high, (also Thursday and Friday); 4 p. m. Central curriculum committee meeting at senior high, Dr. Charles H. Judd, speaker; 4 p. m., Roderic Olzendam, Weyerhaeuser Timber company, address before elementary teachers at Washington; 7 p. m., band parents dinner at senior high; 7:30 p. m., Dr. Judd speaking to all teachers at Bush auditorium.

Thursday: Child guidance clinic at health department; 9 a. m., McKinley assembly; 9:10 a. m., Grant upper grades assembly, Mrs. Wolcott's room in charge. 1 p. m., Englewood assembly, Mrs. Eaton's room in charge.

### State Juice Ban Lifted

A trade barrier prohibiting Oregon fruit and vegetable juices from being sold in Pennsylvania without a license or tax has been eliminated by that state, Anton Roeger, director of the Pennsylvania bureau of foods and chemistry, has notified the Oregon agricultural department.

The Pennsylvania license fee



UNIFORM monthly payments; no renewal expense; no increase in interest rate. A Prudential 25-Year Mortgage is the safe way to finance your home. Available in selected sections... FHA financing optional.

HAWKINS & ROBERTS, INC. Authorized Mortgage Loan Solicitor for The Prudential Insurance Co. of America. Guardian Building Salem, Oregon

Prudential 20 YEAR MORTGAGES

Try use of Chinese remedies. Amazing SUCCESS for 2000 years in CHINA. No matter what ailment you are AFFLICTED—disorders, rheumatism, heart, lung, liver, kidneys, stomach, gas, constipation, ulcers, diabetes, fever, skin, female complaints.

Charlie Chan Chinese Herb Co. Office Hours Only Tues. and Sat., 9 a. m. to 5 p. m. Sun. and Wed., a. m. to 10:30 p. m. 122 N. Com's St., Salem, Or.

### Service Men

Where They Are What They're Doing

WOODBURN—Seven selectees were sent to Portland this week for induction into military service, but only two had been originally registered with the local board. The other five had moved to this section since registering.

The local registrars were David R. "Bob" Jackson of Woodburn and Steven Bisanz of Aurora, route two. The others inducted were J. F. Hurson from Madras, Salem route two; Steve Broeze from Montana, Hubbard; Darrell Sample from Minnesota, Mt. Angel; George Smith from Independence, Mo., Aurora; Carl Harvey from Deadwood, SD, Salem route two.

Daniel H. Sellard, Statesman correspondent at Ft. Stevens has been promoted to corporal, it was learned here recently.

Promotion of First Lieut. George R. Mursell to captain was announced Friday. He is stationed at Camp Callan, Calif.

WEST STAYTON—Word has been received by Mr. and Mrs. Frank McManman of the advancement of their son, La Verne McManman, who enlisted in the US army last summer.

Upon enlistment he was sent to Salt Lake city, where he began training in radio work. He was then sent to Shepherd Field at Wichita Falls, Texas, where he took one month's training. After passing a rigid examination he was selected to attend the army radio school at Scott Field, Chicago.

While at his home here and while attending high school as a transportation student at Aumsville, LaVerne was an amateur radio student.

### Cannery Begins Cherries Monday

WEST SALEM—Oregon Fruit Products company will begin the season's cherry pack Monday.

Mark Gehlar, co-manager, said work on cherries would continue until spring. The cannery finished Salem's first cranberry pack last week. The pack, in the nature of an experiment, was successful, according to Gehlar.

The company is unique among Salem canneries in that, instead of running only summers, it runs practically the year around, maintaining a steady crew of about 60 persons.

Campbell, 2455 State street, and Ernest J. Sing, 944 N. Commercial street, all of Salem. Ivan L. Korush, box 7, Monroe; Everett D. Freitag, route 3, box 99, Albany; James C. Chatazuk, 331 S. Monmouth avenue, Monmouth; John Leroy Scott, Alpine; Elmer L. Scott, Alpine, and Leland D. Abbey, Davenport, Iowa.

Lieut. Benjamin A. Taylor, son of J. J. Taylor of Albany and Mrs. Helen Taylor of Salem, who arrived here Sunday from Tulsa, Okla., left Thursday for San Francisco, to embark with three companions for Ottawa, Canada. Then they will sail for England for service with the royal air force. Lieut. Taylor expects to be in action in Singapore. He has been taking advanced training in Tulsa at the Spartan School of Aeronautics.

Moffett Field—Joseph W. Thomas, 23, of Salem is within 10 weeks of winning his wings and commission as a second lieutenant in the Army Air Corps reserve. Son of Mr. and Mrs. John B. Thomas, 405 Union street, he is a graduate of Mt. Angel Prep school and Mt. Angel college where he received his bachelor of arts degree. Thomas won high school and college letters in basketball and was president of the student body his senior year in college.

He was serving with the 249th Coast Artillery at Fort Stevens when he enlisted as an aviation cadet in July. Following his graduation from the advanced training school he will be assigned to an Air Corps tactical unit or to an army flying school as an instructor.

### Condolences Offered In Death of Hewlett

Copies of a resolution offering sympathy and condolences of the Association of Oregon Counties for the death of County Judge Leroy Hewlett of Marion county were received Friday by the Marion county court and ordered spread upon the court journal.

The resolution, a copy of which was sent to Mrs. Hewlett by the association, was drawn and adopted at a recent meeting of the organization, first since the death of the late judge.

### Guild Plans Vesper Rites

International Vesper service of the World Wide guild will be presented today at 4 p. m. by the three chapters of the First Baptist church. It includes a play, "Join Hands, Then."

The program is: Organ meditation, "Finlandia," Minnie Miller, organist; processional, "God of Our Fathers," scripture, Florence Wallace; prayer, Dorothy Richey; hymn, "We've a Story to Tell to the Nations"; prayer, Caroline Strohmaier; scripture combined with hymn, solo by Betty Clark accompanied by Earline Gleason, scripture by Phyllis Morley; leader, Rose Kessecker; prayer, Rayman Reel; offering for world emergency fund; prayer, Rose Kessecker; message, Mrs. Dolores Bailey.

Candlelighting service—North America, Ellen Morley; Christian flag salute; "America, the Beautiful," solo by Mary Copley, accompanied by Earline Gleason; South America, Dorothy Richey; Europe, Jean Hatfield; Asia, LaVelle Cross; Africa, Evelyn Aspinwall; Australia, Mary Reimann; Guild covenant by the members; prayer, Mrs. Bailey.



CHAS. S. McELHINNY, O. M. L. Man

### HomeKeeper PLAN

You owe it to yourself to know about the HomeKeeper plan... for the man who needs a large amount of insurance protection, but who wants to buy only half that much. I'll be glad to explain it to you clearly, briefly.

### OREGON MUTUAL LIFE INSURANCE COMPANY

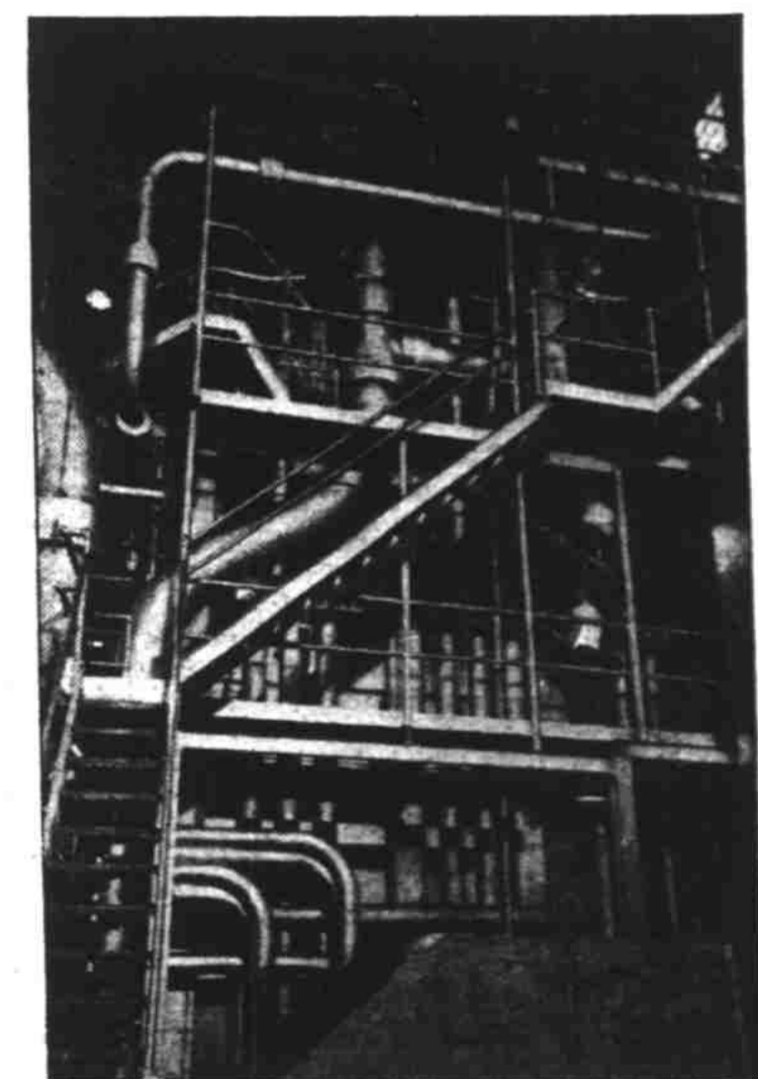
Chas. S. McElhinny  
19 Breyman Bldg.

## 40,000 Horses (THE STEAM KIND) 12 Dude Ranch Vacations



President Polhemus Pre-Views Prizes—Here is a model of the Lazy T Ranch headquarters, at Oregon's famous Willowa Lake, near the Idaho border. 12 winners in PGE's big Quiz Contest will win summer vacations at this ranch. 444 other winners will receive radios, study lamps and electric alarm clocks. PGE's President, James H. Polhemus (left), is inspecting the model with Chuck Oswald, operator of the Lazy T.

(Children 8 to 18 years of age, inclusive, may enter the contest. Entry blanks are now being mailed to all homes in the PGE territory. Other blanks may be obtained at PGE offices and at appliance dealers.)



Picture of 40,000 Horsepower—From this mighty boiler—the largest wood-fired boiler in the world—surges enough steam to equal the work of 40,000 horses. In PGE's Station "L" (in Portland), the steam is used to generate electricity during the months when stream levels are low and water-power plants cannot supply all the energy needed by our customers. PGE's far-sighted management has invested \$5,500,000 in this one plant in order to help prevent power shortages. Salem uses much electricity from this plant.



Rates Drop \$1,750,000... Use of Electricity Rises 23%—Here is a simple picture of the progress of the "electric era!" Since the beginning of last year, PGE's progressive management has slashed rates by \$1,750,000. What has happened? Our customers have responded by using 23% more electricity. Families are living better, by operating more electrical appliances. For example, many families are using their rate savings to pay for electric cookery. Businesses are consuming more electricity in giving their office staffs and customers better lighting. Industries are employing more electricity in production.

### For Christmas Shoppers!

Sensational 6-Day Introductory SALE!

## GENUINE Biltwell SWING CHAIR

A Large Lounge Chair with all the Comfort of a Rocker or Easy Chair

Bought to Sell for \$19.95

Introductory SALE PRICE 14.88

THIS WEEK ONLY

\$2 Down 50¢ A Week

Limit Two to a Customer at This Low Price!

The utmost in comfort is built into this new "Rock-a-Chair" ... now offered at a sensational low price. Has high, restful, form-fitting back; pillow-like spring seat, graceful arms. Beautifully tailored covering in figured tapestry ... your choice of Rust, Green or Brown. As a combined rocker and chair it makes a fine addition to any room.



Liberal Credit \$2 Down Delivers

## Woodward FURNITURE COMPANY

PHONE 6414 LADD & BUSH BANK THREE BLOCKS SOUTH