

Stock Market Decline Sharp

Ends Unsatisfactory Week With Continued Drop by Most List

NEW YORK, Sept. 20—(AP)—The stock market Saturday ended a generally unsatisfactory week with an extension of the sharp decline of the previous session.

While prices steadied in many instances in relatively quiet dealings and a number of favorites managed to emerge with modest advances, small fractional recessions were widespread at the close.

The Associated Press average of 60 stocks was off 2 of a point and on the week showed a net decline of 1. The mid-week rally of 5 of a point was more than wiped out by the retreats of Thursday, Friday and Saturday. A number of large blocks of low-priced issues put the two-hour total at 251,430 shares compared with 230,060 last Saturday.

Rails, steels, motors, mail orders, rubbers, oils and coppers held to a slim groove but minus signs predominated in these groups.

Quotations at Portland

Produce Exchange

PORTLAND, Ore., Sept. 20—(AP)—Butter prints: A grade 41c in parchment wrappers; 42c in cartons; B grade 40c in parchment wrappers; 41c in cartons. Butterfat—First quality maximum 41c per cent acidity, delivered Portland, 41-41 1/2c premium quality (maximum of 35 of 1 per cent acidity) 42-42 1/2c; valley routes and country 43c; 2c extra for cartons; second quality 2 cents under first or 39 1/2c. Eggs—Prices to producers: A large 34c; B 1 1/2c; medium A, 30c; medium B, 26c. Resale to retailers 4c higher for cases. Country: 27c. Cheese—Selling price to Portland retailers: Tillamook; triplets 27 1/2c; leaf 28 1/2c; 97-triplets to wholesalers 25 1/2c; leaf 26 1/2c; f.o.b. Tillamook.

Portland Grain

PORTLAND, Ore., Sept. 20—(AP)—Open High Low Close
May 1.02 1.02 1.01 1.01
December .99 .99 .97 1/2 .97 1/2
Cash grain: Oats No. 2, 38-lb. white, 84.50; No. 1 flat, 81.00; 1.01.
Cash wheat (bid): Soft white, 96c; soft white excluding Rex, 95c; white club, 1.00; western red, 97c; hard white, 1.02; 12 per cent, 1.07; hard white-hair: Quinary, 1.01; 10 per cent, 1.04; 11 per cent, 1.13; 12 per cent, 1.16.
Today's car receipts: Wheat, 19; barley, 1; flour, 10; corn, 4; oats, 4; hay, 1; milled, 5.

Portland Livestock

PORTLAND, Ore., Sept. 20—(AP)—(USDA)—Hogs: Salable for week 2535. Barrow and gilts:
gd-ch, 140-160 lbs. \$11.25@12.10
do 160-180 lbs. 12.35@12.50
do 180-200 lbs. 12.35@12.50
do 200-220 lbs. 12.10@12.50
do 220-240 lbs. 11.75@12.35
do 240-270 lbs. 11.80@12.00
do gd ch, 27-300 lbs. 12.05@11.75
Feeder pigs, gd-ch, 70-120, 12.00@14.00
Cattle: Salable for week 3185. Calves, 345.
Steers, good, 900-1100 lbs. 10.75@12.50
do med. 750-1100 lbs. 9.00@11.00
do country, 750-900 lbs. 8.00@11.00
Heifers, good, 750-900 lbs. 10.25@10.75
do med. 500-900 lbs. 8.75@10.25
do country, 500-900 lbs. 7.50@9.75
Cows, good, all wts. 7.75@8.50
do medium, all wts. 7.00@7.75
do cul-com, all wts. 5.75@7.00
do canner, all wts. 4.75@5.75
Bulls (yearlings excluded)
beef, good, all wts. 9.00@9.50
do sausage, good, all wts. 7.75@8.75
sausage, cul-com, all wts. 6.75@7.75
Vealers, gd-ch, all wts. 12.50@13.50
do com-med, all wts. 8.50@12.50
do cul, all wts. 6.50@8.50
Sheep: Salable for week 3500. Ewes (shorn) gd-ch 4.00@5.00
do com-med 2.50@4.00
Spring lambs—
do gd-ch 11.00@11.50
do med-gd 9.75@10.75
do common 8.75@9.25

Portland Produce

PORTLAND, Ore., Sept. 20—(AP)—Country meats—Selling price to retailers: Country killed hogs, best butchers, 130-140 lbs., 16c; 140-150 lbs., 15c; vealers, fancy, 20-21c; heavy 14-lb. hams, 17c-18c; 10-12c; 19-lb. spring hams 17c-18c; 10-12c; good ter cuts, 12-13c; canner cuts, 11-12c; 14-lb. buying prices: No. 1 grade Leghorn broilers, under 1 1/2 lbs., 17c; over 1 1/2 lbs., 17c; fryers, 2 1/2-3 lbs., 18c; roasters, over 3 lbs., 18c; colored hens 17c; Leghorns, under 3 1/2 lbs., 14c; over 3 1/2 lbs., 16c. Old roosters 14c. Dressed turkeys—No. 1 in a selling prices: Hen, old crop, 24-25c; new crop, 26-28c. Onions—Oregon 1.10-1.25, 90-lb. box; Walla Walla, 1.00-1.10, 40-lb. box; Peas—Coast No. 1, 2.25-2.50 box; Brownseed 1.75-2.00 box. Peppers—Green, 40-50c box. Potatoes—New white locals, 1.50-1.75 central; Yakima No. 1 Gems 1.85-1.90 central; Klamath Falls 1.85-1.90 central. Hay—Selling price on tracks: Alfalfa No. 1, 16.00-16.50; cut-veat, 12.00 ton; Willamette valley clover, 11.00 ton; timothy, eastern Oregon, 21.00 ton. Mohair—1941, 12-month, 45c lb. Wool—1941, contract, Oregon ranch nominal 32-35c lb.; crossbred, 34-37c lb. Domestic flour—Selling price, city delivery, 1 to 22 lbs. loaf, family weights, 45c, 7.00-7.50; 98c, 6.50-7.50; bakers' hard wheat flour, 5.50-6.00; blended hard wheat, 5.50-6.00; wheat 5.00-5.50; bluestem 6.25-6.75. Hops—Oregon 1940, 27-28c lb.; seedless, 41-42c; contract, 1941, 32-33c lb.; Casaca bark—1940 peel, 10c lb.; 1941 30c lb.

Stocks and Bonds

Compiled by The Associated Press
STOCK AVERAGES
30 15 10 5 0
Index Basis Unit Size
D. 2 D. 1 D. 1 D. 1 D. 1
Saturday 62.3 17.1 32.4 43.6
Previous day 62.3 17.3 32.5 43.7
Month ago 61.1 16.1 31.2 42.5
Year ago 58.1 16.7 30.3 44.8
1941 high 62.3 17.3 32.5 43.9
1941 low 54.8 15.4 28.3 39.1

BOND AVERAGES
20 10 10 10
Index Basis Unit Size
D. 3 D. 3 D. 3 D. 3
Saturday 61.4 105.2 101.8 51.0
Previous day 61.7 105.3 101.9 51.2
Month ago 61.1 104.8 101.1 51.2
Year ago 58.1 104.1 99.8 49.1
1941 high 62.3 105.3 102.2 51.2
1941 low 54.8 104.1 99.9 49.0

"Strictly Private" By Quinn Hall



Grain Market Drops, Rises

CHICAGO, Sept. 20—(AP)—Reflecting developments in the price control controversy in Washington, grain market quotations Saturday dropped sharply early in the session but then recovered all or most of the losses.

Wheat tumbled almost two cents, rye and oats more than two cents, corn more than a cent and soybeans more than four cents before rallying strongly in the final hour.

Early selling was blamed by brokers on war news and general trade uneasiness due partly to the statement of Bernard Baruch before the house banking committee advocating all-inclusive price ceilings no higher than parity, except, possibly for some upward adjustments, if necessary.

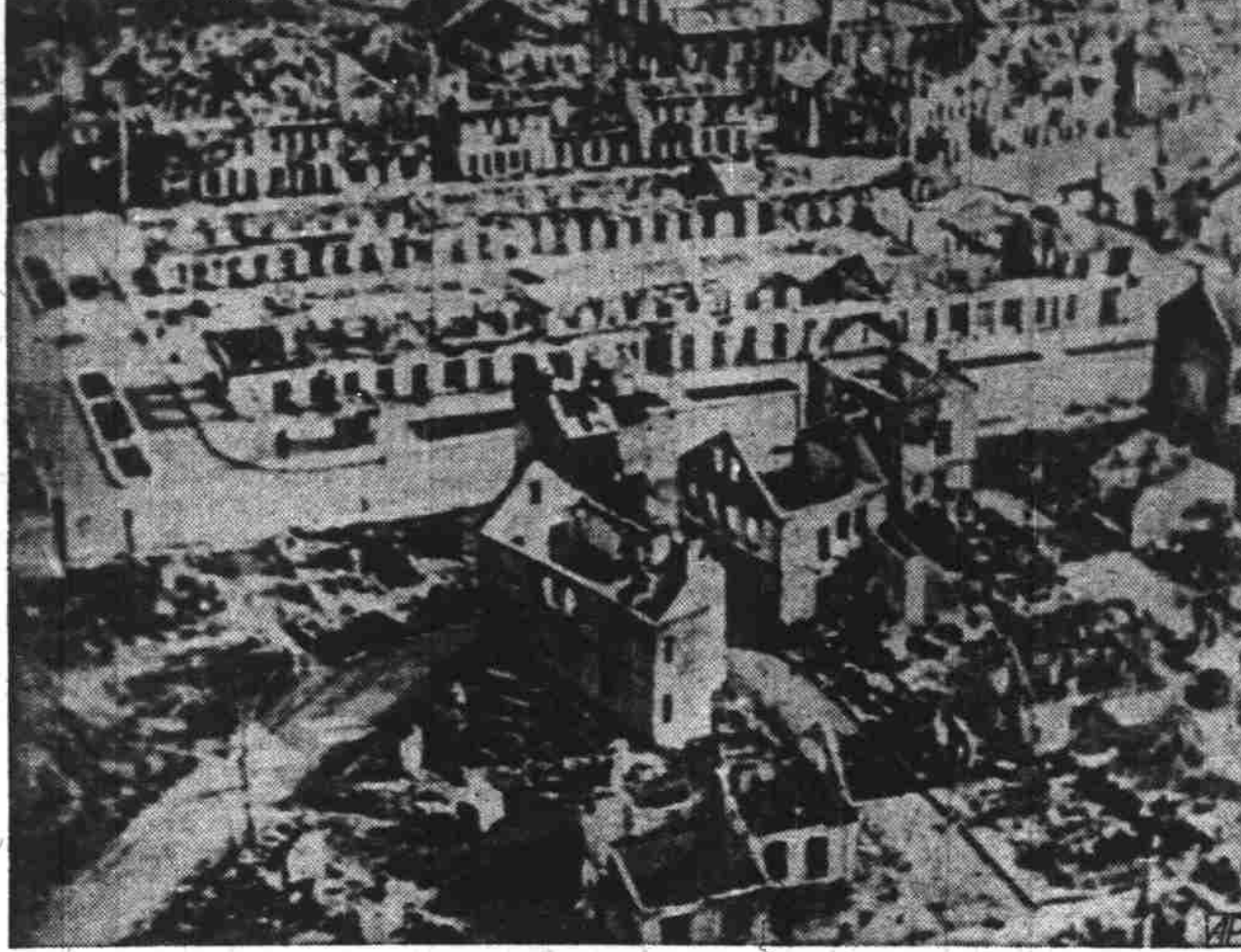
When this selling, including belated profit taking and stop loss orders, had been absorbed, the market responded quickly to a statement of Senator Bankhead who expressed belief that no bill can pass the senate this session that would fix farm price ceilings at less than 110 per cent of parity. Wheat closed unchanged to 1/4 lower compared with Friday, December 1.20 1/2-1.19 1/2, May 1.24-1.23 1/2.

Farmers Urged to Continue Signing

Farmers are urged by the Marion county agent's office to continue signing agreements to plant cover crop seeds under the new schedule of prices set by the government, although the final date for the signing of the agreements was September 18, the whole acreage signed by that date totaled 30,000, which is still below the necessary 61,000 acres. However, it is still possible that the higher prices will go into effect if additional acreage can be signed up in the near future.

The agreement forms were recently mailed out to all farmers listed in the county agent's office, but W. G. Nibler asks all farmers who did not receive one to get one from their AAA supervisor.

After Nazis Bombarded Vitebsk Russian City



The total destruction of cities like shown above is the result of merciless pounding by German artillery, according to a caption on this picture sent from Berlin.

Mt. Angel Man Receives Solemn Profession at Pontifical Mass

MT. ANGEL—The Rt. Rev. Abbot Thomas Meier, OSB, St. Benedict's Abbey, Mt. Angel, received the solemn profession of Frater Mathew Butsch, OSB, into the Benedictine order during a solemn pontifical high mass in the abbey chapel September 12.

Very Rev. Jerome Wespe, OSB, prior of St. Benedict's Abbey, was assistant priest at the profession mass. Rev. Ramien Jentges, OSB, and Rev. Method Korn, OSB, were deacons of honor. Rev. Benedict Keber, OSB, and Frater Albert Bauman, OSB, were deacon and subdeacon. Masters of ceremony were Fraters Robert Keber, OSB, and Thomas Brockhaus, OSB.

men received the scapular from Abbot Thomas and entered into a year's novitiate. The young religious are Fraters novice Joseph Zenner, Portland, Philip Meier, Salem, Bernard Aicher, Woodburn, James Soverby, Vancouver, BC, and Jerry Shea, Butte, Mont.

Frater Mathew, who is a member of one of Mt. Angel's oldest families, entered St. Anselm's minor seminary in 1932. In 1937 he entered St. Benedict's abbey as novice. Frater Mathew received his bachelor's degree from Mt. Angel college in 1940.

Vested in cope and miter, Frater Abbot received the simple profession of Frater Peter Houck, OSB, during a pontifical high mass on the previous Monday. Frater Peter, who was George Houck before entering the monastery, made his simple profession for three years.

On September 7, five young

Jefferson Lodge Holds Session

JEFFERSON—At the meeting Tuesday night of Mt. Jefferson Rebekah lodge the institution of the lodge was observed. Lillian Smith, noble grand, presided. Guests were present from Lebanon and Albany.

Corsages were presented to Mr. and Mrs. Harry Roland, charter members of Jefferson lodge; also a corsage was sent to an invalid charter member, Mrs. G. W. Humphrey, in Portland. Corsages were presented to older members, Millie Bilyeu, Bertha Curl, Maud Epley and Grace Thurston.

Mrs. Irvine Wright played the piano, while old-time songs were sung, after which each member told what impressed them most when they were initiated. The refreshment table was centered with an old-fashioned centerpiece, with brass jardinieres containing marigolds, guarded by orange tapers. Thirty members and guests were present.

Fairview School Has 20 Pupils Enrolled

FAIRVIEW—The Fairview school, with 30 students attending, opened Monday with two teachers, Mrs. Henry Knoche, principal, and Mrs. Kenneth Stuart, primary. Aileen Allison, Harold Evie and Helen Ojua were the beginners.

Stanley Fuqua, Carl Rasaka, Morris Kinnan, Viola Tharp and Helen Kotka are the young people of the Fairview district who are attending the Amity union high school.

Closing Quotations

NEW YORK, Sept. 20—(AP)—Today's closing quotations:

Air Reduction	42	Curtiss Wright	9 3/4	J C Penney	86 1/2
Alaska Juneau	4 1/4	Douglas Aircraft	76 1/4	Penn Railroad	22 1/2
Al Chem & Dye	16 1/2	Du Pont de N	15 1/2	Phelps Dodge	31 1/2
Allis Chalmers	29 3/4	Eastman Kodak	143 3/4	Phillips Petrol	41
American Can	84 1/2	General Electric	32 1/2	Proct & Gamble	60 3/4
Am Car & Fry	30 1/2	General Foods	40 1/2	Public Serv NJ	21
Am Rad Std Str	8 1/4	General Motors	40 1/2	Pullman	26 1/2
Am Rolling Mills	14 1/4	Goodyear	18 1/2	Radio	26 1/2
Am Smelt & Ref	43 1/2	Goodrich	18 1/2	Rayonier	15
Am Tel & Tel	154 1/2	Goodyear	18 1/2	Republic Steel	19 1/2
Am Tobacco B	70 1/2	Great Northern	24 1/4	Richfield Oil	10 1/2
Am Water Wks	4 1/2	Grayhound	14 1/2	Safeway Stores	46
Am Zinc L & S	5 1/2	Illinois Central	8 3/4	Sears Roebuck	73 1/4
Anacosta	27 1/4	Insp Copper	11 1/2	Shell Union	14 1/2
Armour Illinois	4 1/4	International Harv	54 1/4	Stone Webst	21
Armour Nickel	29 1/4	Internat Nickel	29 1/4	Southern Pacific	13 1/2
Atchison	26 1/4	Int Pap & P Pfd	69	Sperry Corp	37 1/4
Aviation Corp	4	Internat T & T	23 1/4	Standard Brands	53
Baldwin Loco	15 1/4	Johns Manville	70	Stand Oil Calif	23 1/4
Bendix Aviation	39 1/4	Kennecott	36 1/4	Standard Oil Ind	32 1/2
Bethlehem Steel	68	Libbey-O-Ford	30 1/2	Standard Oil NJ	42 1/2
Boring Airplane	22 1/2	Lockheed	29 1/4	United Foods	7 1/4
Borden	21 1/4	Loew's	21 1/4	United Rubber	26 1/2
Borg Warner	20	Monty Ward	34 1/4	US Steel	56 1/2
Callahan Z L	1	Natl Dairy Prod	15 1/2	Vanadium	25 1/4
Canada Dry	16 1/4	Natl Distillers	24 1/4	Warner Pictures	5 1/4
Canadian Pacific	4 1/4	National Lead	17 1/2	Western Union	28 1/2
Cat Tractor	46 1/2	NY Central	12	Westing Elec	89 1/2
Chesapeake & O	37 1/2	No American Av	15 1/2	Woolworth	30 1/2
Chrysler	57 1/4	No American Co	12 1/2		
Col Gas & Elec	2 1/4	Northern Pacific	8 1/4		
Coml Solvent	10 1/4	Otis Steel	7 1/4		
Consolid Aircraft	48 1/2	Pac Am Fish	11 1/4		
Consolid Edison	17 1/2	Pac Gas & Elec	25 1/2		
Consolidated Oil	6	Packard	3		
Continental Can	36	Pan Am Airways	17 1/4		
Corn Products	52 1/2	Paramount Pict	15 1/4		
Crown Zellerbach	13 1/2				

Salem Market Quotations

The prices below supplied by a local grocer are indicative of the daily market prices paid to growers by Salem buyers but are not guaranteed by The Statesman:

VEGETABLES		Old roosters	55
Apples, box, 2 1/2	30	Butterfat	40
Beets, bunch, doz.	30	Premium	42
Brussels sprout, flat	1.25	No. 2	39
Cabbage, lb.	32	Eggs	33
Carrots	30	Large A	33
Cauliflower, crate	1.50	Medium A	28
Celery, green	1.40	Small A	26
Corn, fresh, doz.	15	Pullets	16
Danish squash	30	Checks	22
Hubbard squash	30	Colored hens	16
Lettuce, 66	1.85	Colored fryers	14
Mustard Green, doz.	50	Leghorn hens, over 3 1/2 lbs.	13
Parsnips, lug	75	Leghorn hens, under 3 1/2 lbs.	12
Onions, 50 lbs.	1.10	Old roosters	55
Peppers, green, lb.	1.10	No. 1 poultry, 65 lbs.	60
Potatoes, 100 lbs. No. 1 new	1.85		
Potatoes, No. 2, 50-lb. bag	50		
Radishes, doz.	40		
Tomatoes, flats	1.00		
Tomatoes, bushel	1.00		

GRAIN, HAY AND SEEDS (Buying Prices)
Barley, No. 2, 24.00 to 25.00
Feed barley, ton 25.00
Clover hay, ton 9.00 to 10.00
Alfalfa hay, ton 10.00 to 11.00
Dairy feed, 80-lb. bag 1.25
Hen scratch feed 2.15
Cracked corn 1.80
Wheat 80 to 1.00

EGGS AND POULTRY (Buying Prices of Anderson's)
BUTTERFAT
No. 1 42
No. 2 39
Premium 45
Extra large white 33
Extra large brown 33
Medium 29
Standard 29
Pullets 16
Colored hens 16
Colored fryers 14
White Leghorn 17

THE LONE RANGER



Calling His Bluff



POLLY AND HER PALS



MICKEY MOUSE



LITTLE ANNIE ROONEY



Power Assured to Several Homes

NORTH HOWELL—Rural electrification is now assured for several families living west of the North Howell store. Those so benefited include the homes of Robert Meyer, Bill Lehman, Clarence Espe, Ditchen Bros., and Wayne Strachan.

Farmers are busy preparing the

Waconda, Eldridge Schools to Open

WACONDA—Mr. and Mrs. Richard Saucier of Mill City were guests this week at the Arthur Goffin home.

School will open here and in the Eldridge district Monday.

Teachers at Eldridge will be Adele Manning, St. Louis, and F. Hammel, who recently accepted the position following the resignation of Stella McKay.

Wool in Boston

BOSTON, Sept. 19—(AP)—(USDA)—The volume of trade in wool on the Boston market was inclined to slacken. A moderate amount of wool was sold, but the rate of turnover was slower than last week or the middle of the current week. Asking prices generally were being maintained despite the hesitancy and resistance on the part of buyers to recent advances.

Grade French combing length fine territory wools were quoted steady at 31.62 to 31.97 scoured basis. Combing three-eighths and quarter-blood bright fleeces were quoted mostly at 48 to 51 cents in the grease. Buyers were being maintained at prices on the high side of these ranges only in cases of urgent need.

When Others Fail



THIMBLE THEATRE—Starring Popeye



But It's Still Flaky!



VA ANPT USIN' TADPOLES—VA USE MINNERS!



Charlie Chan
Chinese Herb Co.
Office Hours Only
Tues. and Sat.
2 p.m. to 6 p.m. and
9 a.m. to 1 p.m.; 6 to 7 p.m.
Consultation: Blood pressure and
urine tests are free of charge.
25 Years in Business
122 N. Com'l St., Salem, Or.

Filberts Wanted
Kelley Farquhar
Salem, Oregon

When Others Fail
Use our Chinese remedies. After 2000 years in CHINA, no matter what ailment you are afflicted with—colds, sinusitis, heart, lung, liver, kidneys, stomach, gas, constipation, ulcers, diabetes, fever, skin, female complaints—
TADPOLE TABLETS
LEG-GROWING EXPERIMENTAL STATION NO. 1
I SUSPOSE YOU MAKE VER LEG-GROWING TADPOLE TABLETS
QUITE THE CONTRARY, MY FRIEND. WAS YOU TOLD ME IT WAS FOR CON-VENIENCE
IN OUR LABORATORY WE HAVE FOUND MERMIDS ARE LEGLESS BECAUSE THEY LACK SEVERAL VITAMINS ESSENTIAL TO SHAPELY LIMBS
OH, VITA-MINERS? NOW I UNDERSTAND
VA ANPT USIN' TADPOLES—VA USE MINNERS!