

Activity Light On Stock Mart

Transfers Fewest in Past 20 Years; Average off Slightly

NEW YORK, July 8.—(AP)—Stocks limped over a slightly uneven terrain in today's market with activity the smallest in the past 20 years.

The ticker tape idled from the start as traders apparently were unable to find any real interest in either domestic or foreign happenings.

At the close fractional declines outnumbered advances a trifle, but weakness in any department was rare.

The Associated Press average of 60 issues was off .1 of a point, transfers of 232,890 shares were the lowest for a full session since June 29, 1930. They compared with 252,937 last Friday.

Business developments continued more encouraging than otherwise, brokers said, but speculative forces apparently still were waiting for the answers to a number of questions before taking on sizable commitments either way.

General Motors reported the best June sales to consumers since 1936 and the stock slipped 3/4. Chrysler was off as much as 1/2.

Aircraft deliveries for the first half of this year were placed at some \$225,000,000, a record volume and about equal to the entire aggregate for 1939.

However, was unimpaired and Boeing, Glenn Martin and Sperry conceded small amounts. United Aircraft was an exception with a gain of 3/8.

Behind minute signs were American Telephone, Kennecott, Anaconda, NY Central, Great Northern, Loft, General Electric, Woolworth, J. C. Penney, Western Union, US Rubber and Allied Chemical.

Gainers included Consolidated Edison, Union Pacific, American Can, Westinghouse, Square D, Eastman Kodak and International Harvester.

Hubbard Grocery Store Is Moved

HUBBARD—J. Herman Bontrager who has been conducting the grocery store in the Kell block at the corner of the Pacific highway and the Needy road for the last 21 months, moved his business to his newly acquired building at the corner of Main and C streets. The room was occupied by the Max Cook grocery until July 1.

A. C. Hawkins, who is operating a grocery business at Aurora, started a branch store in the Kell block at Hubbard on Sunday. Hawkins was formerly in business at Salem.

Foods Had Held No Enjoyment In Her Condition

Mrs. Kime Suffered Terribly After Every Meal She Ate; Wanted a Medicine to Fit Her Case So Badly... Found It in the Krugon Capsules.

The makers of Krugon do not resort to high powered, dramatic advertising to sell you this full strength compound. They depend almost exclusively upon the truthful, honest home statements of men and women you know, friends and neighbors who live right here in Salem, people whose word you know you can depend upon.



MRS. MAUD KIME

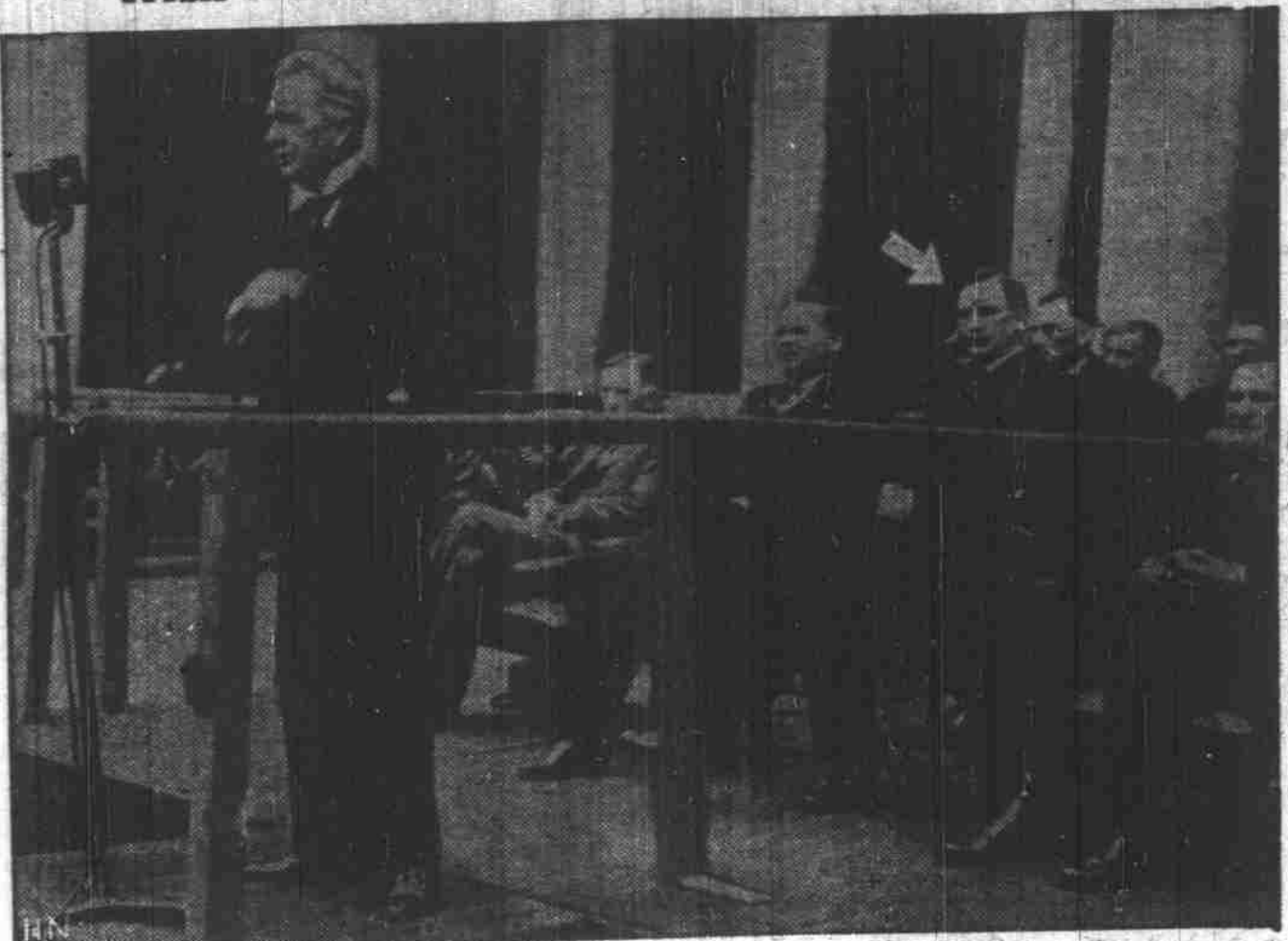
For example, read what Mrs. Maud Kime, East Bellevue street, Salem, a respected lady of this vicinity who has lived here for over ten years, said recently in a praising public statement to the Krugon Representative who is daily meeting the local public at the Fred Meyer Drug Store, this city:

"I had tried many different kinds of medicines but my choice of them all is Krugon," said Mrs. Kime. "Faust elimination first started my health problems and then they seemed to continually grow worse. My digestion became upset and there were so many foods that I did not dare eat at all. Often the suffering from gas and bloating after my meals was more than I felt I could endure. I could not eat any fruit or berries either and tea or coffee would upset me terribly. I had a dreadful sour stomach most of the time. Really foods held no enjoyment for me, for to eat meant suffering. I was wondering just when, if ever, I would locate the medicine to help me when I began the use of Krugon."

"Little did I expect to receive such pleasant results so quickly as the Krugon capsules gave me," continued Mrs. Kime. "Proper elimination soon had me on the mend until today I can eat and enjoy my meals without those distressing effects afterwards. I have even eaten strawberries, something I had dared not touch for years before. It is such a pleasure to me to be able to recommend to others a medicine that I know gives such satisfactory results. It is truly wonderful what a medicine can do when it fits your case."

The Krugon Representative is daily meeting the local public at the Fred Meyer Drug Store, 148 North Liberty Street, Salem, where he is introducing and explaining the surprising action of this modern capsule remedy.

Irish Political Foes Unite in "Hour of Peril"



For the first time in 20 years, William T. Cosgrave and Eamon De Valera, bitter foes of Irish politics, appear on the same platform in Dublin. Cosgrave is speaking as Eire's Premier De Valera sits in background (arrow). A united Ireland is called for now since it is feared the Germans may attempt to invade Ireland and thereby get at England. Eire long has sought independence, but in northern Ireland, has been loyal to the British crown.

Salem Market Quotations

The prices below supplied by a local grocer and indicative of the daily market prices paid to growers by Salem buyers but are not guaranteed by The Statesman:

VEGETABLES	
Beans, green	.08
Beans, wax	.09
Cabbage, local	.10
Carrots, local, doz.	.30
Cauliflower, local	1.30
Cucumbers, doz.	.40
Celery	1.90
Cherries	.09
Lettuce, local	1.75
Onions, 50 lbs.	.25
Green onions, doz.	1.75
Peppers, green	.10
Potatoes, local, 100 lb. No. 1	1.50
New potatoes, 100 lb.	.92
Radishes	.25
Squash, crookneck, doz.	.40
Squash, zucchini, lb.	.04
Spinach, local, box	1.10
Peas, local, lb.	.05
Mustard greens, doz.	.30
Watercress, doz.	.40
Beets, doz.	.30
Turnips, doz.	.45

GRAIN, HAY AND SEEDS	
Wheat, No. 1, re-cleaned, bu.	7.00
High Clear	7.00
Feed barley, ton	18.00
Clover hay, ton	12.00
Alfalfa hay, ton	12.00
Egg mash, No. 1 grade, 80 lb. bag	1.80
Dairy feed, 80 lb. bag	1.90
Waters, 80 lb. bag	1.90
Cracked corn	1.90

EGGS (Buying Prices of Anderson's)	
Grade A large, doz.	.18
Grade B large, doz.	.15
Grade C large, doz.	.10
Fullets	.10
Colored hens	.11

Quotations at Portland

PORTLAND, Ore., July 8.—(AP)—Dairy produce prices: Eggs, large extras 20; standards 18; medium extras 18; standards 16.

Portland Grain
PORTLAND, Ore., July 8.—(AP)—Wheat—High Clear 74 1/2; 74 1/2; 74 1/2. Cash Grain: Oats, No. 2, 35-36; white, 30-30.50; barley, No. 2, 45 lb. 18.00; Corn, No. 5, 57 shipment, 30.00. No. 1, 1.64 1/2.

Portland Livestock
PORTLAND, Ore., July 8.—(AP)—(USDA)—Hogs: Saleable for week 1600, total 2250; market active, around 75 higher than last week.

Wheat Declines After Early Rise
CHICAGO, July 8.—(AP)—The largest wheat marketings of the season and possibility of showers in the northwest more than offset sensational crop damage reports from the spring wheat belt today and prices closed about a cent lower.

Portland Produce
PORTLAND, Ore., July 8.—(AP)—Canned: Corned beef, best butchers 125-150 lb. 7 1/2-8; venison, fancy, 13 1/2-14 lb. 12-13; heavy 10-12 lb. 10-11; lamb, spring 16; yearlings 10-12; ewes 8-7 lb.; good center cuts, 10-11.

Stocks and Bonds
July 8
BOND AVERAGES
Compiled by The Associated Press

	10	15	20	10
Net change	4.2	3.8	3.4	3.7
Monday	10.3	9.4	8.7	8.9
Previous day	26.0	20.5	16.8	16.9
Month ago	57.4	45.4	35.2	35.3
Year ago	55.8	40.1	32.1	32.1
1940 high	59.9	46.6	37.5	37.5
1940 low	48.3	32.3	25.3	25.3

STOCK AVERAGES
Compiled by The Associated Press

	10	15	20	10
Net change	1.5	1.4	1.3	1.2
Monday	3.2	2.8	2.5	2.4
Previous day	10.5	9.2	8.0	7.9
Month ago	23.8	19.9	15.0	15.0
Year ago	25.7	21.4	17.0	17.0
1940 high	28.3	22.3	17.5	17.5
1940 low	15.2	12.0	9.0	9.0

Butterfat, No. 1, 28c; No. 2, 26c; premium, 29 1/2c. A grade print 28c; B grade 31c; quarters 28c.

Colored eggs .10
White Leghorn, heavy .09
White Leghorn, fry .13
White Leghorn, light .08
Old Roosters .05
Heavy hens, lb. .11
Chickens, doz. of Marion Creamers .18
Grade A large, doz. .18
Grade A medium, doz. .16
Fullets .10
Leghorn hens, 1 1/2 lbs. .12
Colored fryers, 2-3 lbs. .13
Colored hens .11

Wool in Boston
BOSTON, July 8.—(AP)—(URDA)—Business on domestic wools in Boston was very quiet today. Quotations were steady to soft, but largely nominal, because of the slow demand. Good French combing length fine territory wools in original bags were reported available in Boston at 80-83 cents, scoured basis. Country packed bright fleeces of three-eighths and one-quarter inch grades in mixed lots were quoted steady at 39-40 cents in the grease delivered to mills, but these wools were quiet and some country dealers were reported to be asking for bids.

Wool and Mohair (Buying Prices)
1939 contracts, lb. .28 to .30
1940 contracts, lb. .28

LIVESTOCK (Buying prices for No. 1 stock, based on conditions and sales reported up to 4 p.m.)
1940 spring lambs 4.00 to 7.00
Ewe lambs 2.00 to 2.50
Hogs, top, 160-230 lbs. 4.00 to 4.25
Beef cows 4.00 to 4.50
Alfalfa hay, ton 12.00 to 13.00
Hatters 6.00 to 7.00
Dairy type cows 4.00 to 4.75
Ewe scratch feed 6.00
Dressed veal, lb. .12

WOOL AND MOHAIR (Buying Prices)
Wool, medium, lb. .25
Coarse, lb. .25
Mohs, lb. .25

To Study Sugar Beet Industry

Farmers, Crops Specialists Will Make Tour in County Friday

The possibility of expanded production of sugar beet seed in Oregon, and particularly in the Willamette valley, will be studied in the field by farmers and crops specialists on a sugar beet seed production tour scheduled for Friday, July 12. Harry L. Riches, Marion county agent, is inviting all interested persons to go on this tour, which will start from the Jefferson high school at Jefferson at 9:30.

Oregon is likely to become the leading state in sugar beet seed production, in the opinion of many who have watched the development of this infant industry. It is also the belief of these that sugar beet seed production is likely to be confined to irrigated soils of the Newberg, Chehalis and Willamette series, which are free from wild morning glory and have at least reasonably good fertility.

It is estimated that about 300 acres of beet seed will be harvested in the valley this year. In addition, about 200 acres are being grown in Klamath county and 50 acres in Jackson. All of this acreage was contracted in advance by the west coast sugar beet seed committee, of which G. L. Stoker of Corvallis is the Oregon representative. Stoker and George T. Scott of Berkeley, manager of the committee, will make the tour, as will the four county agents of Marion, Lane, Benton and Linn counties.

Visits will first be made to five farms between the Santitas and Willamette rivers and then the party will proceed to the Charles Lamb farm in Linn county where fertilizer trials will be studied. After lunch at Albany, the touring party will go to the Bob Carter farm near Corvallis, and then return to Linn county to visit one of the experimental station farms and the Frank Kropp place northeast of Harrisburg. Final stop will be at the Glen Strome farm in Lane county near the Lancaster store.

Grain Crop Yield Indicated Heavy

Production Per Acre May Be Greatest in History in Northwest

PORTLAND, July 8.—(AP)—Grain crops of the Pacific northwest may give the largest per-acre yield in history this year, Hyman H. Cohen, market editor of the Oregon Journal, said today.

Returning from a 3500-mile tour of Oregon, Washington, Idaho and northern California producing areas, Cohen reported: "The season of 1940 will not show the greatest output of grains and breadstuffs in history for the Pacific northwest (700,000,000 bushels, but it will show one of the biggest crop yields in history. The drawback to producing the greatest total volume is the decreased area of wheat, which is created by the much greater 1938 acreage. Oregon, Cohen said, should produce 21,245,000 bushels of wheat, Washington 36,742,000 and Idaho 21,183,000, a total of 80,000,000 bushels.

"If extreme dry winds come," he added, "the crop will be may be 10 per cent less. If there is practically a full output of spring wheat, which could happen if the growing season is abnormal long, then the output may be 15 per cent larger than currently shown."

The area generally, through its grain fields, orchards and farms, "is in a position to supply the most intimate food needs of a very large per-cent of the world," Cohen said.

He placed the total grain prospects at 119,782,000 bushels compared with 104,355,000 bushels for the larger acreage of 1939, and 131,652,000 bushels for the much greater 1938 acreage.

Washington 36,742,000 and Idaho 21,183,000, a total of 80,000,000 bushels.

"If extreme dry winds come," he added, "the crop will be may be 10 per cent less. If there is practically a full output of spring wheat, which could happen if the growing season is abnormal long, then the output may be 15 per cent larger than currently shown."

Closing Quotations

NEW YORK, July 8.—(AP)—Today's closing quotations.

Al Chem & Dye	147 1/2	Comwith & Sou.	1 1/4	Northern Pacific	6 1/4
American Stores	8	Consol Edison	23 3/4	Packard	3 1/4
American Can	95 1/2	Consol Oil	6 3/4	J C Penney	7 1/4
Am Power & Lt	3 1/2	Curtis Wright	6 1/4	Phillips Petrol	31 1/4
Am Rad Std San	4 1/2	Douglas Aircraft	67	Press Steel Car.	9 1/4
Am Roll Mills	11	Du Pont	157	Pub Service NJ	37
Am Smelt & Ref	36	Elec Power & Lt	5 1/4	Pullman	42
Am Tel & Tel	160 1/4	Erle RR	1	Safeway Stores	42
Am Water Wks.	9	General Electric	41	Shell Union	8 1/4
Anaconda	19 1/2	General Foods	41	Sou Cal Edison	27 1/4
Armour Ill	6 1/4	Goodyear Tires	14 1/4	Southern Pacific	8 1/4
Barnardall	6 1/4	Great Northern	3 1/4	Standard Brands	6 1/4
Bait & Ohio	3 1/4	Illinois Central	7 1/4	Standard Oil Cal	19
Bendix Avia	27 1/4	Insp Copper	4 1/4	Standard Oil NJ	32 1/4
Bethlehem Steel	43 1/4	Int Harvester	23 1/4	Studebaker	6 1/4
Boeing Air	43 1/4	Int Nickel	23 1/4	Sup Oil	1 1/4
Borg & Warner	18 1/4	Int Paper & P	48	Timk Roll Bear	42 1/4
Spald Mfg	3 1/4	Int Tel & Tel	2 1/4	Trans-America	6 1/4
California Pack	18 1/4	Johns Manville	56 1/4	Union Carbide	6 1/4
Callahan Z-L	1 1/4	Kenecott	25	United Aircraft	33
Calumet Hec	5 1/4	Low's	24 1/4	United Airlines	17 1/4
Canadian Pacific	2 1/4	Monty Ward	32 1/4	US Rubber	19 1/4
Celanese	25 1/4	Nash-Kelvinator	4 1/4	US Steel	51 1/4
Ches & Ohio	36 1/4	National Biscuit	18 1/4	Western Union	17
Chrysler	63 1/4	Natl Dairy Prod	13 1/4	White Motors	17
Coml Solvent	8 1/4	Natl Dist	20 1/4	Woolworth	31 1/4
		Natl Power & Lt	7 1/4		

burn, last week obtained a marriage license at the county clerk's office in Salem. They plan to be married in Salem this week, they have indicated.

Garretts Have Son
AURORA—Mr. and Mrs. Donald Garrett are the parents of a son born last week at a Salem hospital. He is their first child.

Get Marriage License
WOODBURN—Bob Smith and Anabel Binford, both of Wood-

See Us When You Need Ready Cash

NO EMBARRASSING QUESTIONS!

Money Promptly At Low Rates

STATE FINANCE CO.
344 State Phone 9261
Lic. S-216 M-222

By CLIFF STERRET

POLLY AND HER PALS

BOY, WILL TH' MISSUS RAKE ME OVER TH' COALS WHEN I GET IN? I DON'T EXPECT SUSIE T' LET OUT ONE PLAGUE TOOK PEEP PETE.

REELLY, SAM? YEP.

I MIXED SOME CEMENT IN HER BEAUTY CLAY BEFORE I WENT OUT T' NIGHT!

Maw Keeps a Stiff Upper Lip!

MICKEY MOUSE

A Little More White Powder, Clarabelle!

COMES ANOTHER MIGHTY... AND STILL ANOTHER! BUT NO RAMS! NOTE: NO WORD FROM CLARABELLE... AND PETE'S ROCKY TREAT STAYS AS EVER!

YOU AND YOUR SCHEMES... WHAT GOT POOR CLARABELLE IN THE SHIP SHIN!

I KNOW I'M TO BLAME AND I'VE JUST GOTTA RESCUE HER... SOME WAY... SOMEHOW...!

LET IN SPITE OF ALL THE FRANTIC WORRY ABOUT HER, IT DOESN'T LOOK AS IF SHE WANTS TO BE RESCUED!

MICKEY'LL NEVER FORGIVE ME IF THEY DON'T CAPTURE PETE, BUT... AFTER ALL, WHEN A GIRL MEETS THE MAN...!

M, BASE... YER LOOKIN' GREAT! TIME WE WERE SENDIN' YOU HOME-EM!

AND LEAVE YOU... I MEAN, I'M TOO WEAK TO TRAVEL... JUST UP FROM A SICK BED, AND... OVV... DEAR...!

By WALT DISNEY

LITTLE ANNIE ROONEY

Accidentally a Hero

FOR AN OLD ROOSTER YOU'RE MIGHTY TOUGH... THE ONLY YOU MIGHTED UP THE BUSHWACKER AFTER YOU CAPTURED HIM WAS...

DAD BLAME IT! I DIDNT CAPTURE HIM! HE HAD THE DROP ON ME... I WAS STANDING THERE REACHIN' FOR THE SKY WHEN LITTLE ANNIE STEPPED UP WITH A SHOTGUN A-POINTIN' RIGHT AT HIS HEART...

THE YOUNGEST DIDNT EVEN KNOW SHE WAS AIMIN' THE GUN AT HIM... BUT HE KNEW IT... HE GOT SCARED AN' BUMPED INTO THE SOUTH END OF MY BURRO

AN THE BURRO KICKED HIM RIGHT INTO MY LAD... THEN I SORTA PUT A FEW FISHBONES TOUCHES ON THE BOSS ANNIE AN' THE BURRO STARTED

By BRANDON WALSH

TOOTS AND CASPER

Just a Play-Boy!

COLONEL HOOPER IS IN THERE ASKING MY BOSS FOR A JOB! HA-HA! HE WASN'T A CHANCE! HE'S ONE GUY THE BOSS HAS NO USE FOR!

CASPER, I'VE HIRED COLONEL HOOPER TO BE MY ASSISTANT!

YES, SHRIMP! I START IN AT THE TOP AND WORK DOWN!

WHY DID I LET THE COLONEL OVERHEAR ME DISCUSSING MY SECRET? NOW HE HAS A CLUB OVER MY HEAD! I HAD TO HIRE HIM.

BOSS, DO SUMRN! HOOPER'S ANTIQUITY HAS GONE TO HIS HEAD! HE'S MAULIN' EVERYBODY AROUND!

ER, HE'S HOOPER'S ANTIQUITY HAS GONE TO HIS HEAD! CASPER-ER-ER... HE LIKES TO PLAY.

By JIMMY MURPHY

THIMBLE THEATRE—Starring Popeye

The Reel Thing

SAY, AIN'T IT NICE AN' QUIET, POPEYE?

I SEZ IT IS! JUS LIKE FLOATIN ON A LILY POND

I FEELS LIKE SINGIN, ONLY SWEEPEE IS SLEEPIN LIKE A BABY AN' I WANN DO LITTLE W...

THIS LOOKS LIKE A TRAVELHOG MOVIE FILLER SHOW! FILLER, ESCAPE MUCH BETTER.

Why Suffer Any Longer?

WHEN OTHERS FAIL to cure Chinese remedies. Amazing SUCCESS for 1000 years in CHINA. No matter what ailment you are AFFLICTED with, rheumatism, back, liver, kidney, stomach, gas, constipation, sciatica, diabetes, fever, skin, female complaints.

Charlie Chan
Chinese Herb Co.
S. B. Peng Office
Hours 9 to 6 p.m.
except Sunday and
Wednesday, 9 to 10
a.m.

Penney's Centennial Ties 50c

Temporary Location 173 S. Liberty - One Block South and Across Street From Old Location