

Wheat Prices Decline Cent

Selling Is Based on War News, Good Weather, Crop Reports

CHICAGO, June 8.—(AP)—The wheat market today yielded practically all the ground gained yesterday as prices sagged a cent a bushel due to selling based on war news—which traders said appeared to be unfavorable to the allies—good weather and optimistic reports.

Other grains sagged with wheat, some oats and rye quotations returning to the minimums, which resulted in the virtual cessation of activity in these pits. Wheat was off as much as 1 1/2 cents a bushel but closed 3/4 cent lower than yesterday, July 80-80 1/2, September 80 1/2-3/4.

Some early buying of wheat was credited to flour interests possibly associated with prospective government purchases for relief.

Moisture in the soft wheat area, over the corn belt and spring wheat zones both sides of the Canadian border emphasized the very favorable crop situation. On the basis of present prospective private experts believe a large US spring wheat harvest and another bumper Canadian crop are possibilities.

With wheat closing only about 1 1/2-3 cents over the minimums and corn 2 to almost 4 cents over, commission houses received reports that wheat harvest and marketing of the new wheat crop depress quotations to around the minimums.

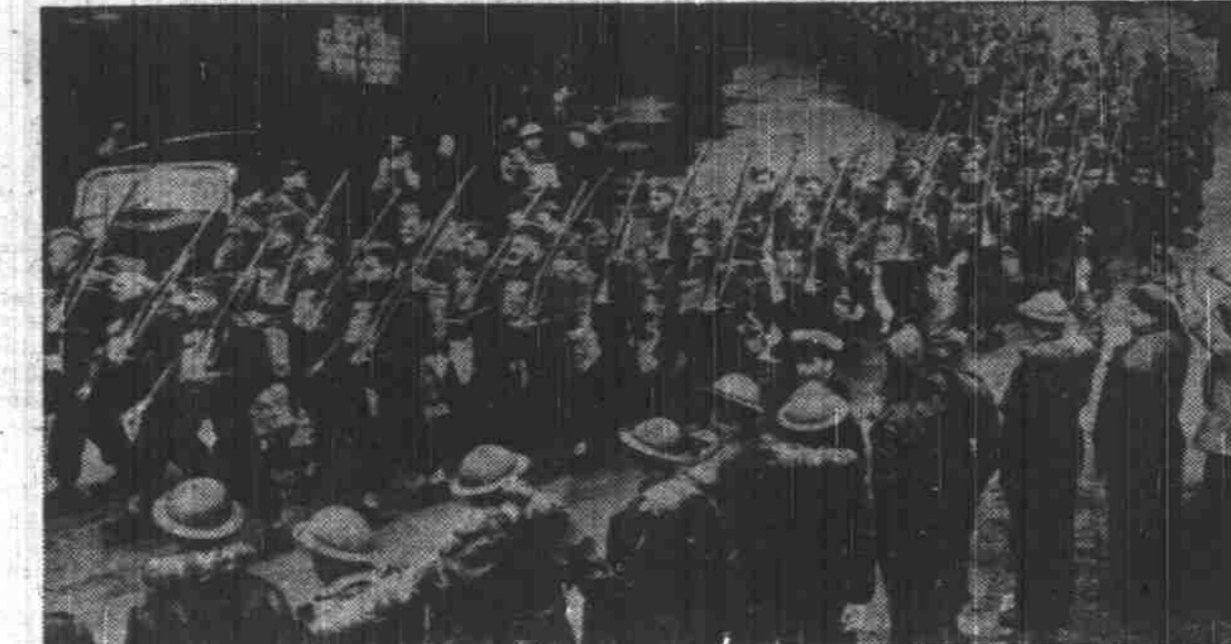
Due partly to the fact that Minneapolis prices have been at minimums much of the time this week, with unhedged wheat quoted as much as two cents under hedged grain, receipts have dwindled sharply. Only 97 cars were received today against 227 a week ago. The 12 principal terminals received only 2,535,000 bushels this week compared with 3,533,000 last week and 6,001,000 a year ago.

No. 1 red wheat sold as much as 5 1/2 over the July price at Kansas City with No. 1 hard 9 1/2 over. At Minneapolis No. 1 dark northern sold up to 4 cents over the July minimum with dark hard 6 cents over.

CHERRIES WANTED

Royal Annes
Bings and Lambert's
Highest Cash Prices
Kelley Farquhar
and Company

Londoners Cheered—by Help From Canada



Marching smartly toward their barracks, another contingent of Canadian troops arrives in England. These soldiers may now be fighting beside their fellow Canadians in France, Belgium or Norway.

Salem Market Quotations

(Buying Prices)
The prices below supplied by a local grocer and indicative of the daily market prices paid by Salem buyers but are not guaranteed by The Statesman.

VEGETABLES	
Cabbage, lb.	02 3/4
Carrots, Calif. doz.	1.50
Cauliflower, local	1.00
Cucumbers, doz.	2.00
Cherries, Triplicat	1.10
Letts, local	1.00
Onions, 50 lb. bag	2.25
Green onions, doz.	20
Peppers, green	25
Potatoes, local, prt. No. 1	1.85
Cleaver hay, ton	19.00
New potatoes, lb.	02 3/4
Kidney beans	25
Raspberries, crate	0.09
Spinach, Seattle, box	08
Rhubarb, lb.	08
Asparagus, doz.	08
Peas, local, lb.	05
Strawberries, doz.	1.50
Mustard, green, doz.	40
Watermelon, doz.	40
Eggplant, doz.	40
Turnips, doz.	45

GRAIN, HAY AND SEEDS	
Wheat, No. 1 restricted, bu.	75.00
Wheat, No. 2, bu.	70.00
Feed barley, ton	20.00
Cleaver hay, ton	19.00
Alfalfa hay, ton	12.00
Egg mash, No. 1, grade, 50 lb. bag	1.40
Cherry feed, 80 lb. bag	1.40
Hen scratch feed	1.00
Cracked corn	1.60
Wheat	1.90

EGGS AND POULTRY	
Special (Buying Prices of Addressed's)	16
Grade A large, doz.	15
Grade B large, doz.	13
Grade C large, doz.	10
Pullets	10
Colored hens	11

FSCC Will Take 1200 Tons Berries

The government, through the federal surplus commodities corporation, will take 1200 tons of the Oregon loganberry crop, O. L. Davis, president and manager of the Woodburn Fruit Growers' association was informed yesterday by telegram from Senator Charles L. McNary.

Government intervention comes as a result of a request by the Oregon loganberry control board. War in Europe has shut off shipments to England, heretofore the chief foreign market, causing a large surplus here.

About half of this year's tonnage, estimated at 3000 tons, is under contract with private packers. It is said. The independent Woodburn pool, headed by John Damage, has sold 532 tons out-right.

Stocks Close In Down Trend

European War Bulletins Chill Speculative Sentiment

NEW YORK, June 8.—(AP)—In dealings that barely kept the ticker tape alive, the stock market today finished a war-hesitant week pointing slightly downward.

European bulletins telling of further naval progress tended to chill speculative sentiment to some extent despite other reports the French were putting up a stiff retreating battle and even had bombed Berlin suburbs.

Wall street was calm under the new threat that Italy would make the break on the side of the Germans early next week but the possibility of more adverse happenings over the weekend caused many traders to lighten accounts or keep buying commitments at a minimum.

On the other hand, domestic business developments remained a hopeful market factor although a pessimistic note was sounded here and there by those who fear the deflationary effect of proposed heavy defense taxes on individuals and corporations.

Leading stocks started out with minor advances, but the majority fell away a trifle at the close.

Transfers of 199,270 shares for the two hours were the smallest for any session since July 8, 1939. They compared with 278,445 last Saturday. The largest turnover of around 2,500,000 shares also was a bottom figure for this period in about a year.

The Associated Press average of 88 issues was off 1 of a point at 88.2 and on the week was down .3.

Tells of Record

Cherry Fly Spray Repeat Is Advised

ALBANY—A much needed outlet for agricultural commodities of this territory will be provided when a small experimental cannery opens here within the next 10 days. The concern, known as the Albany Canning company, is being sponsored by the chamber of commerce, and will be a custom cannery under the management of P. J. Burk.

Operations will start in the building west of the Charles J. Eddy Seed company plant, formerly the Hunt Brothers' cannery, on Water street. If the venture proves successful, a permanent plant may be started in 1941, managers of the experimental station state.

Cherry Fly Spray Repeat Is Advised

CORVALLIS, June 8.—(AP)—S. C. Jones, Oregon State college entomologist, said today that recent rains make a second spray application necessary to control the cherry fruit fly in Oregon orchards.

Unless further rains occur, one additional spraying will protect Royal Anne cherries, he advised growers. A third and probably a fourth application will be needed for late ripening varieties at seven to 10-day intervals.

Frigidaire Makes Record for Sales

One hundred thousand Frigidaires sold within a period of 30 days is the May record announced by the Frigidaire division of General Motors according to Carl Hogg, co-owner and resident manager of Hogg Bros. Appliance store, local dealer.

"This constitutes the biggest single month's sales record in household refrigeration history," points out Mr. Hogg, "and from the indications now, June will bid fair to equal this record if not to better it."

Cherry Valuation Set

Telegraphic advices from Ottawa state that the Canadian seasonal valuation on cherries at 3 cents per pound over invoice prices becomes effective on shipments entered June 11 or thereafter.

New Cannery Will Open at Albany

ALBANY—A much needed outlet for agricultural commodities of this territory will be provided when a small experimental cannery opens here within the next 10 days. The concern, known as the Albany Canning company, is being sponsored by the chamber of commerce, and will be a custom cannery under the management of P. J. Burk.

Operations will start in the building west of the Charles J. Eddy Seed company plant, formerly the Hunt Brothers' cannery, on Water street. If the venture proves successful, a permanent plant may be started in 1941, managers of the experimental station state.

Cherry Fly Spray Repeat Is Advised

CORVALLIS, June 8.—(AP)—S. C. Jones, Oregon State college entomologist, said today that recent rains make a second spray application necessary to control the cherry fruit fly in Oregon orchards.

Unless further rains occur, one additional spraying will protect Royal Anne cherries, he advised growers. A third and probably a fourth application will be needed for late ripening varieties at seven to 10-day intervals.

Stocks and Bonds

June 8

STOCK AVERAGES
Compiled by the Associated Press

	Index	15	15	60
Net change	-0.2	D.1	Util	Stocks
Saturday	-54.3	13.6	31.4	38.2
Previous day	54.4	13.7	31.3	38.3
Month ago	69.5	17.8	37.9	48.5
Year ago	68.8	18.8	38.0	48.5
1940 high	74.5	20.5	40.8	49.7
1940 low	53.3	13.1	30.9	37.2

BOND AVERAGES

	Index	10	10	30
Net change	-1	Unch	A.3	A.6
Saturday	49.1	99.1	92.1	36.3
Previous day	49.0	99.1	91.8	35.7
Month ago	57.9	102.7	96.3	40.7
Year ago	58.4	100.3	96.7	42.8
1940 high	59.9	103.4	97.5	42.2
1940 low	48.3	98.9	90.8	35.1

Gain in Business Noted Past Week

PORTLAND, June 8.—(AP)—Portland business gained moderately during the first week of June, with retail sales slightly ahead of the corresponding week a year ago, Dun's review said today.

May's business showed a substantial gain over the same month in 1939. Seven and eight per cent increases were reported by department stores.

Lumber prices dropped from their level of several months ago as a result of a log surplus. Orders fell off slightly.

FOR LOANS

IT'S State Finance

Company
Lic. S-216 M-222
844 State St. Phone 9261

Quick Money

No Embarrassing Questions Asked

Quotations at Portland

PORTLAND, Ore., June 8.—(AP)—Eggs: Large extras 17; standards 16; medium extras 15; standards 14 1/2.

PORTLAND, Ore., June 8.—(AP)—Wheat: Open High Low Close September 71 71 71 71

PORTLAND, Ore., June 8.—(AP)—Country Meats—Selling price to retailer: Country killed hogs, best butchers 125-150 lb. 8 1/2%; vealers, fancy 13 1/2%.

PORTLAND, Ore., June 8.—(AP)—Cattle: For week, salable 3150, total 2650; calves, salable 295, total 285; compared week ago steers strong to 25 higher.

Portland Livestock

PORTLAND, Ore., June 8.—(AP)—(USDA)—Hogs: For week, salable 8760, total 4867; compared week ago, butchers steady to 10 lower.

PORTLAND, Ore., June 8.—(AP)—Barrows and gilts, gd.-ch. 140-160 lbs. 8.25-8.85

PORTLAND, Ore., June 8.—(AP)—Cattle: For week, salable 3150, total 2650; calves, salable 295, total 285; compared week ago steers strong to 25 higher.

PORTLAND, Ore., June 8.—(AP)—Hogs: For week, salable 8760, total 4867; compared week ago, butchers steady to 10 lower.

Cross Word Puzzle

1	2	3	4	5	6	7	8	9	10	11
12			13				14			
15			16				17			
18			19				20			
22			23				24	25	26	
			27	28			29	30		
31	32	33					34			
35							36			
37			38	39			40	41	42	43
			44	45			46			
47	48						49			51
52							53			54
55							56			57

HORIZONTAL

46—evergreen tree
47—colored portion of eye
48—yucca fiber
49—room in a haven
50—guy-type of a gaff
51—Roman road
52—small seed
53—stake in cards

VERTICAL

1—ethical
2—rounded convex molding
3—Cossack
4—female horse
5—Greek letter
6—musical composition

7—violin maker of Cremona
8—chopped
9—stops short
10—long narrow inlet
11—soft food
12—small drum
13—group of eight
14—moral left at a meal
15—fermented beverage
16—organ stop
17—rodent
18—self
19—omen
20—bean
21—flat-boned, among birds
22—swift
23—receive as one's own
24—wireless
25—arrange in folds
26—organ stop
27—rodent
28—self
29—omen
30—bean
31—flat-boned, among birds
32—swift
33—receive as one's own
34—wireless
35—arrange in folds
36—organ stop
37—rodent
38—self
39—omen
40—bean
41—flat-boned, among birds
42—swift
43—receive as one's own
44—wireless
45—arrange in folds
46—masculine name
47—suoculent fruit
48—front of an army
49—beverage

Answer to yesterday's puzzle:

1—witty saying
2—tableland
3—stringed instrument
4—nucleated egg cells
5—particle
6—Assam silkworm
7—decay
8—frog genus
9—enclose
10—winged
11—make amends for
12—feminine name
13—pertaining to the ear
14—observed
15—dry Alpine wind
16—name
17—account of
18—realized
19—place of assembly
20—roster
21—rocky pinnacles
22—cabin
23—aromatic plant
24—deal with

DR. CHAN LAM

CHINESE MEDICINE CO.

393 1/2 Court St., corner Liberty.

Office open Tuesday and Saturday only, 10 a. m. to 1 p. m., 6 to 7 p. m. Consultation, blood pressure and urine tests are free of charge.

Wool in Boston

BOSTON, June 8.—(AP)—(USDA)—Interest in wool on the Boston market was vigorously stimulated in the past week by the announcement of the quartermaster's department needs for wool goods in the next year.

Strong buying movement in country-packed three-eighths and quarter blood bright fleeces advanced prices during the week from around 35 cents to 39 cents, in the grease, delivered to mills. Demand increased moderately for territory and Texas wools. Quotations on these wools advanced beyond prices millers were ready to pay freely. Graded combed bright fleeces were setters at 18 to 35 cents, in the grease, for fine Delain, at 37 to 39 cents for half bloods and at 34 to 36 cents for three-eighths and quarter blood grades.

General sheep and lamb range: Spring lambs, ed.-ch.-c. 8.75-9.00
do medium good 7.75-8.50
4 do common 7.00-7.50
Lambs (shear), med.-good 7.00-7.50
do common 5.00-5.50
Ewes (shear), wethers 3.75-3.90
do common-medium 2.00-2.75

Wool in Boston

BOSTON, June 8.—(AP)—(USDA)—Interest in wool on the Boston market was vigorously stimulated in the past week by the announcement of the quartermaster's department needs for wool goods in the next year.

Strong buying movement in country-packed three-eighths and quarter blood bright fleeces advanced prices during the week from around 35 cents to 39 cents, in the grease, delivered to mills. Demand increased moderately for territory and Texas wools. Quotations on these wools advanced beyond prices millers were ready to pay freely. Graded combed bright fleeces were setters at 18 to 35 cents, in the grease, for fine Delain, at 37 to 39 cents for half bloods and at 34 to 36 cents for three-eighths and quarter blood grades.

But It Won't Be Long!



Mickey Mouse



Little Annie Rooney



Toots and Casper



Thumbie Theatre—Starring Popeye



Where Wisemen Fear to Tread



Walt Disney



Brandon Walsh



Jimmy Murphy



Eugene Stands on Ceremony



But It Won't Be Long!



Mickey Mouse



Little Annie Rooney



Toots and Casper



Thumbie Theatre—Starring Popeye



PENNEY'S! New Location! 173 SO. LIBERTY

Five Doors South of First National Bank on Liberty!