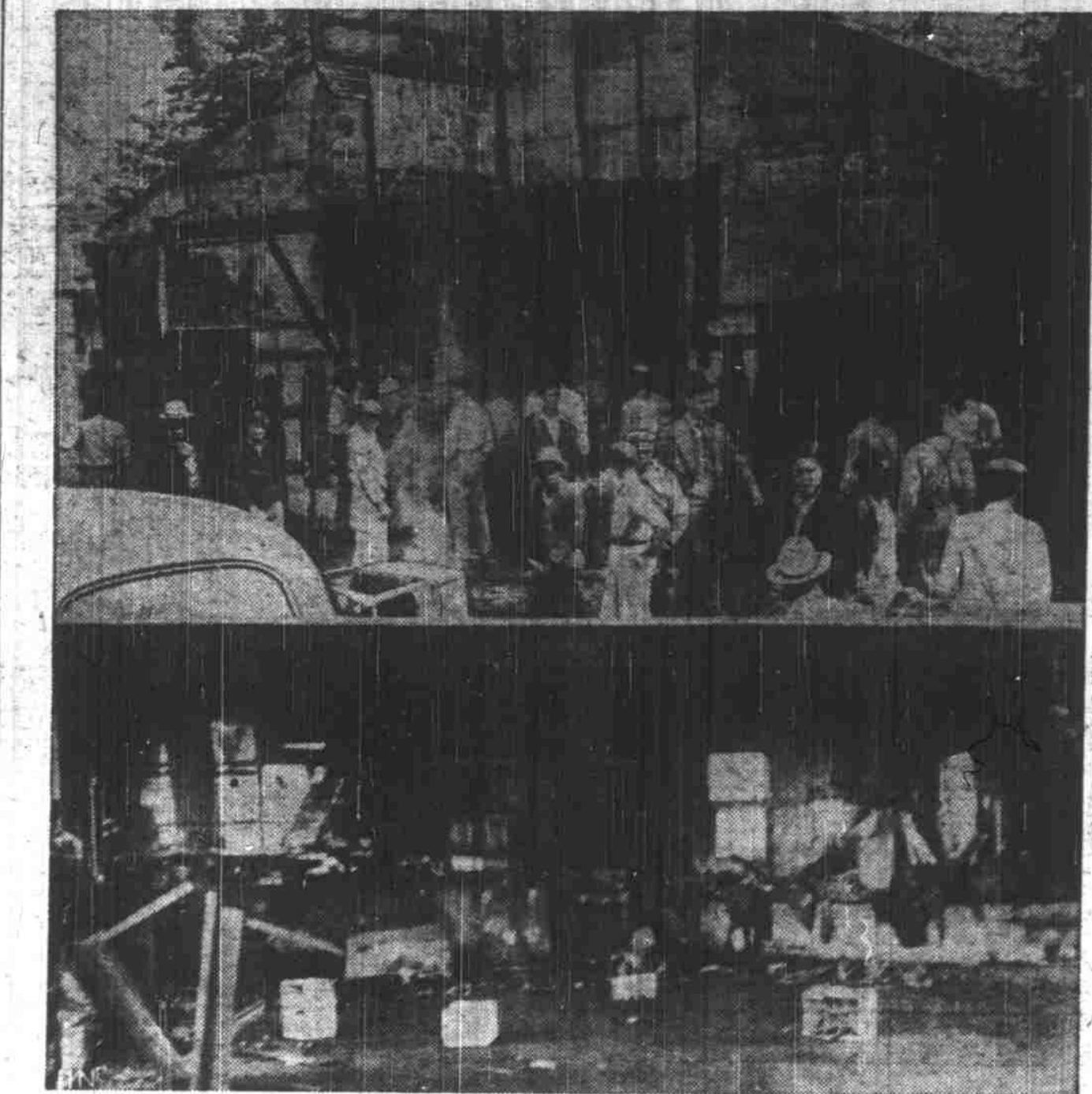


Wheat Rises After Slump

Rally Is Due to Buying Caused by European Situation

CHICAGO, May 3.—Wheat prices rose two cents after an early fractional slump today and close 1 1/2-1 5/8 higher than yesterday with May at \$1.04 3/4, and July 1.05 3/4-31/64.

Where Blaze Took Lives of 200 Natchez Negroes



Here are interior and exterior views of the dance hall in Natchez, Miss., where 200 negroes were burned to death in a holocaust which trapped the merry-makers.

Trends Shifting On Stock Market

List Rebounds After Early Nose-Dive; Average Is Down

NEW YORK, May 3.—(AP)—It was a swing-high-swing-low stock market today with war influences providing the motivation for rapidly shifting trends.

The list nose-dived in the forenoon but on a sudden rebound reduced losses running to 2 or more points or transformed them into gains of as much.

The Associated Press average of 49 stocks, despite the rebound, finished off -1 of a point at 49.8.

Of issues traded, 321 ended on the offside, 285 were up and 228 unchanged, transfers expanded to 1,070,750 shares from 845,420 the day before.

Steeles and motors led the morning slump and were among the first to revive.

Chrysler was down 1/4 as some disappointment was shown over failure of directors to declare a larger dividend.

Joint Church Program On Schedule Again

SILVERTON—Silverton's Music week committee members have announced a change of plans.

SILVERTON—Silverton's Music week committee members have announced a change of plans. This year, the committee had previously announced something different will be done at Silverton.

Salem Market Quotations

Table listing market quotations for various commodities including eggs, poultry, and wool. Includes sub-sections for Eggs and Poultry, Livestock, and Wool and Mohair.

Aphis Infesting Pea, Vetch Crop

Proper Control Demands New Type Duster, Agent Says

DALLAS—Considerable concern has been shown during the past week by a large number of growers of vetches and peas because of the heavy aphis population appearing at this time, according to W. C. Leth, Polk county agricultural agent.

Information received from the county agent's office indicates that this condition is more or less general over the county, however, certain areas are affected worse than others.

No general recommendation concerning dusting for the control of aphis has been made by the county agent's office largely because there is not sufficient or suitable dusting equipment available to do the job satisfactorily.

Falls City Group Installs Officers

FALLS CITY—The last meeting for this year of the Parent Teachers Improvement organization was held Wednesday night with a large crowd present.

Quotations at Portland

Table listing various market quotations for Portland, including eggs, cash grain, and livestock prices.

Melons Transplanted

GRAND ISLAND—Market gardeners in the district have been busy engaged transplanting the spear muskmelon plants from the cold frames to the open fields.

Wool in Boston

BOSTON, May 3.—(AP)—(USDA)—Inquiries for greasy combing domestic wools were being received occasionally in Boston today.

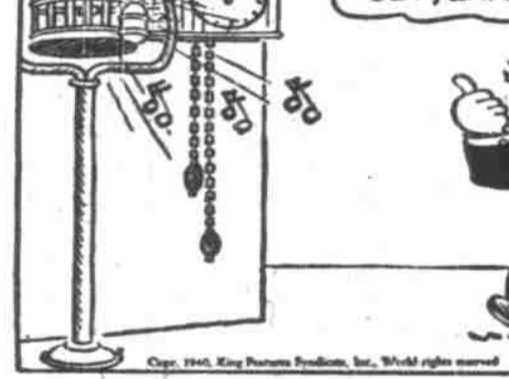
War News Boosts Pulp Stock Prices

SAN FRANCISCO, May 3.—(AP)—War news of British flight from Norway fell with moderately depressing force on the San Francisco stock market.

Portland Livestock

Table listing livestock prices in Portland, including steers, heifers, and various types of hogs.

Polly and Her Pals



Mickey Mouse



Little Annie Rooney



Toots and Casper



Thimble Theatre



April's Retail Trade Is Lower

PORTLAND, May 3.—(AP)—Dun's Business Review said today the Portland area's trade was under a year ago but was not as far down as first expected.

Closing Quotations

Table listing closing quotations for various stocks and commodities in New York, including Allied Stores, American Can, and various utility stocks.

Dallas Church Circle Meets

DALLAS—Members of Circle C of the First Presbyterian church were entertained at the home of Mrs. Emil Fehvet Wednesday afternoon.

California Woman Visits Macleay

MACLEAY—Mrs. H. E. Martin, 31, has had as her guest her cousin, Mrs. Ralph Bayley of Salinas, Cal.

Mission Society Meets at Dallas

DALLAS—Mrs. Burton C. Bell entertained the members of the Women's Missionary Society of the First Methodist church at her country home Wednesday afternoon.

Advertisement for 'MAIL WELL ENVELOPES' by the 'STATESMAN Publishing Company'.

Advertisement for 'Popular... MASTER BREAD' by Cliff Sterret.

Comic strip titled 'DARNED IF I'M GONNA SIT AROUND HERE' featuring a character and a dog.

Comic strip titled 'SO THIS IS DEAD-END CANYON' featuring a character and a dog.

Comic strip titled 'THIS PLACE SURE LOOKS INNOCENT' featuring a character and a dog.

Comic strip titled 'HEY! WHAT---!!?' featuring a character and a dog.

Comic strip titled 'PLEASE, MR. HAPPY—I KNOW YOU'RE TERRIBLE BUSY' featuring a character and a dog.

Comic strip titled 'YOU TELL THAT ORNERY COOK THERE' featuring a character and a dog.

Comic strip titled 'HONEST—YOU CAN'T WORK ALL THE TIME' featuring a character and a dog.

Comic strip titled 'NOW DON'T GO AWAY' featuring a character and a dog.

Comic strip titled 'WHAT IS IT? YOU WANT TO SHOW ME?' featuring a character and a dog.

Comic strip titled 'DEAR CASPER—I'VE LONG WANTED TO MEET YOU' featuring a character and a dog.

Comic strip titled 'WHY THE FRESH THINKING OF ALL THE NERVE!' featuring a character and a dog.

Comic strip titled 'THIS EXPLAINS THE MYSTERIOUS CALLS' featuring a character and a dog.

Comic strip titled 'OH, SO YA REALLY WIN FIGHT, EH?' featuring a character and a dog.

Comic strip titled 'SHUT UP, AN' FIGHT, SAILOR!' featuring a character and a dog.

Comic strip titled 'LET'S SEE, THERE WERE SIXTEEN MEN FIGHTING POPEYE' featuring a character and a dog.

Comic strip titled 'NO, IT REALLY IS SIXTEEN SUBTRACTED FROM SIXTEEN' featuring a character and a dog.

Advertisement for 'Popular... MASTER BREAD' by Cliff Sterret.