

## Guild System Catholic Idea

Reorganizing of Economic Life for Moral Unity Prelates' Solution

WASHINGTON, Feb. 8.—(AP)—Sixteen prelates of the Catholic church in America called today for the re-establishment of a "guild" system, "which will bind men together in society according to their respective occupations, thus creating moral unity."

Under the "guild or corporative system," both employers and employees would be organized (as Pope Pius XI suggested) "not according to the position they occupy in the labor market, but according to the diverse functions which they exercise in society."

Rejecting both "extreme individualism" and "collectivism" in government policy, the archbishops and bishops who comprise the administrative board of the national Catholic welfare conference declared:

"Our economic life must be reorganized not on the disintegrating principles of individualism but on the constructive principle of social and moral unity among the members of human society."

In "The Church and the Social Order," a 34-page statement on conditions in the United States, the prelates presented what Catholic sources considered their response to the recent encyclical which Pope XII addressed to the church in the United States.

The NCWC called it "the most important utterance made by the Catholic hierarchy since the bishops' program of reconstruction of 1919."

The prelates declared that: "The state must regulate the social responsibility of property so that the burden of providing for the common good is equitably distributed."

To protect its rights, labor must be free to bargain collectively, but "the principle of force" is equally wrong when used by labor or capital.

"Security of the working man as against unemployment, old age, sickness, accident and death, must be frankly accepted as a social responsibility of industry jointly with society."

A living wage must provide decent support both for the working man and his family, and must make possible savings to meet unemployment, sickness, death and old age.

While warning against "unfair" wages, the bishops also said that if skilled laborers, through monopoly control, raise their hourly wage rates too high, the poor help to pay the cost in the form of higher prices. They also branded as "palpably unjust" any idea that the net result of production belongs to labor and that capital shall receive "only sufficient to replace itself."

Surveying the entire field of economic life, the prelates said: "It is manifestly impossible to expect good economic order if wages, prices, working conditions and the public are left to chance or to the haphazard methods of so-called free enterprise."

**Big Flood Control Budget Advocated**  
(Continued from Page 1)  
a series of seven dams on tributaries of the Willamette river, was carried forward this year with an appropriation of \$5,500,000.

ASTORIA, Ore., Feb. 8.—(AP)—The United States bureau of fisheries is prepared to spend \$250,000 to offset fish losses caused by dam construction in the Columbia river.

Charles E. Jackson, fisheries commissioner, advised State Fish Commissioner M. R. Chessman today that the bureau was prepared, pending outcome of further experiments, to submit estimates.

## Honeymoon



Honeymooning in Florida following a N.Y. wedding recently were Nunnally Johnson, 42, top flight film writer, and Screen Starlet Doris Bowdon, 25, (above). They were married at the estate of Helen Hayes and Charles MacArthur. Johnson and his bride met while he was adapting her first starring picture, "The Grapes of Wrath."—H.N. photo.

## Pelley Admits He Planned big Coup

(Continued from Page 1.) that it had adopted a friendly attitude toward Pelley, despite branding his organization "fascistic."

These charges were based upon documents purchased from David Mayne, a former Pelley employe here, by Harold Welsberg, a former employe of the senate civil liberties committee, and by Gardner Jackson of labor's non-partisan league. They were inserted in the congressional record by Rep. Hook (D-Mich.), but were withdrawn when Mayne and Pelley declared they were forgeries. The documents purported to be letters from Pelley to Mayne.

Welsberg and Jackson asked United States Attorney David Pine today to take criminal action against Mayne, and Hook addressed to Pine a letter demanding "immediate action" on the Welsberg-Jackson request.

William A. Roberts, attorney for Welsberg and Jackson, said that a complaint had been filed charging Mayne with defrauding Jackson who paid \$105 for the letters.

Pine declined to discuss the matter on the ground that policy prohibited disclosure of complaints pending the issuance of warrants.

## Seek Subversives In Gotham Finest

NEW YORK, Feb. 8.—(AP)—New York City's 18,000-odd police were told in effect by Commissioner Lewis J. Valentine today that they could not be members of the Christian Front or of any "subversive or communist organization, band or fascist club" and remain on the force.

"What we want is the truth," said Valentine, ordering an investigation—by questionnaire—of each man to determine whether he was a member of any such group. There is nothing to prevent any member of the department from joining any organization, but the police at all times are peace officers and must remain neutral.

"If they are members of these organizations, then they cease to be neutral."

Valentine's order met with immediate resentment from some patrolmen. It was reported several refused to answer the questions, while others, although answering, expressed disapproval.

## Burglaries Here Thought Cleared

(Continued from Page 1)

Raymond Shirley home, 750 North Summer street, in a burglary January 30. Three other radios, all of which had been sold, were recovered from Corvallis dealers.

Patrolmen Kiggins and Frank Reeves brought back the loot be-

lieved to have come from Salem yesterday. It included:

Four radios, a man's wrist watch, a man's pocket watch, a woven mat, nine automobile robes, one comforter, an overcoat, a ski jacket, a sleeping bag, one new auto tire, a small ivory clock, one Mixmaster, a portable typewriter, a waffle iron, an electric toaster, a lady's handbag, two small pocket bags, a box of assorted canned food and jelly, and an electric razor.

Williams and Mathis are being held in the Benton county jail

## Cooke Stationery Company to Move

(Continued from page 1)

play space and to permit expansion of the firm's lines. The new

on a charge of possession of stolen property and may be prosecuted on that charge in Benton county.

store with a 21 by 120-foot floor space will have twice the room of the present one.

The stationery business which Cooke acquired from the Patton estate five years ago has been in operation in Salem for more than 60 years.

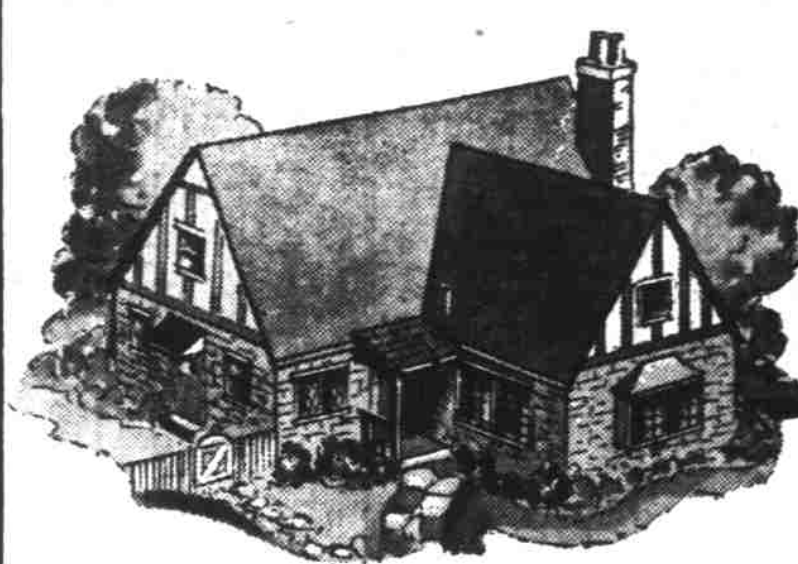
Mr. Cooke will leave this morning by automobile with Mrs. Cooke and their daughter, Dorothy, for a week's trip to San Francisco. Business in connection with the impending move will be transacted in bay district.

## Chamberlain Hits At "Murder Acts"

LONDON, Feb. 8.—(AP)—Prime Minister Neville Chamberlain declared scornfully today that "acts of murder" at sea by the German air force would not win the war, asserted the western conflict was going the way Great Britain wanted it and announced new allied aid "now is on its way" to Finland.

The prime minister's statements were made in one of his periodic reviews of the war to the house of commons.

Chamberlain's statement that "we have no reason to be dissatisfied with the opening phases of the war" coincided with disclosure that a third contingent of Canadian troops had reached England, in five transports. The force had artillery and ambulance units, technicians and a few fliers. The first man to land was a United States citizen who said he had enlisted "for fun." His name was withheld.



# SALES FOR THE HOME



USE SEARS EASY PAY PLAN... you pay only a small amount down and divide the balance, plus the usual carrying charge, over a period of months.



## DAVENPORT and CHAIR

A HIGH IN LUXURIOUS COMFORT AT A LOW IN INITIAL OUTLAY!

**54<sup>90</sup>**  
\$5 DOWN  
(USUAL CARRYING CHARGE)



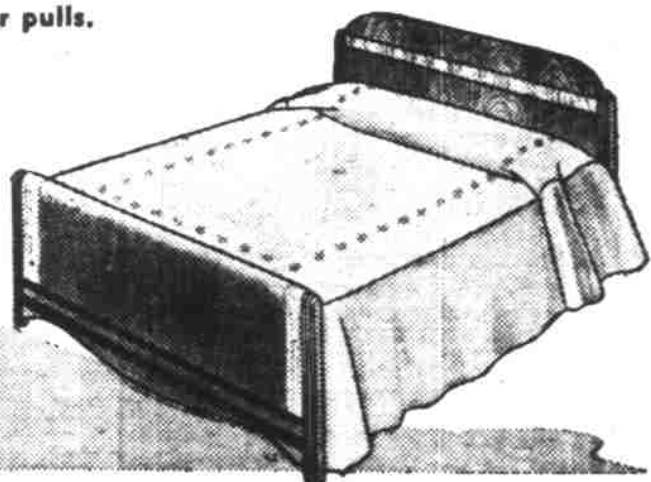
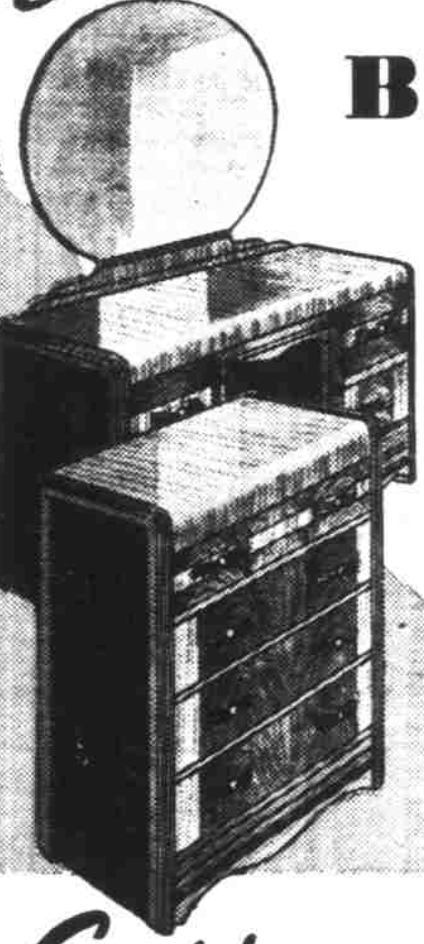
Now during our huge February Sale... this luxuriously comfortable living room suite... priced unbelievably low for modern, massive Honor-Bilt pieces! The Davenport is 81 inches overall, with sturdy hardwood frame, heavy well-padded arms and 8-way tied springs. Its plump cushions and the cushion on the roomy chair are Marshall-spring filled and the velour covers come in choice of colors.

Sears

## BEDROOM SET

Waterfall edge bed, 4-drawer chest and 42-inch vanity with 30-inch circular mirror! Figured walnut inlays, gold and catalin drawer pulls.

**49<sup>90</sup>**  
\$5 Down  
Usual Carrying Charge



## Hassocks

ART LEATHER COVERS  
Plus, comfortable styles in choice of colors. Contrasting beaded seams. **1.19**

## Card Table

ACID-RESISTING TOP  
Metal corners, sturdy well-braced legs, moisture and acid-resisting top. **98¢**

## Smoker

NEW, MODERN DESIGN  
All metal, combination black enamel and chromium finish. Convenient handle. **89¢**

## SWING ROCKER

Covered in Velour  
Walnut finished hardwood frame, deep comfortable seat. Honor-bilt triple-doweled construction.

**17.90**  
\$2.50 Down  
Usual Carrying Charge



Sears

## BROADLOOM CARPET

26 Patterns! Seamless, 9, 10½ and 12-Foot Widths!

Seamless sizes for every room... in your choice of six fine qualities and twenty-six exclusive Sears' patterns! Modern textures, Early American Hook, Leaf-tone and Persian designs! Cut and bound in our own workrooms for immediate delivery... at no extra cost to you.

**Special!**

CHATFIELD 9x15'... 44.85  
FENWICK 9x15'... 53.35  
BRANDON 9x15'... 81.75

|                        |                         |                         |                       |
|------------------------|-------------------------|-------------------------|-----------------------|
| Drainboard<br>LINOLEUM | 9x12' Rugs<br>FELT BASE | New, Genuine<br>NUMDAHS | 24-In. Rug<br>BORDERS |
| 50¢ FT.                | 4.95                    | 4.98                    | 29¢ YD.               |

36-inch width burlap back inlaid in marbleized patterns. Large assortment of colors. Bright colored bordered patterns with heavily enameled easy-to-clean surface. 4x6-ft. sizes, hand-embroidered in pastel or bright colors on white grounds. Oak finish felt base, looks like hardwood. 36-inch width... 39¢ 72-inch width... 78¢



**Sears**  
ROEBUCK & CO.

CHOICE CUT PORK

**Steaks 12<sup>1/2</sup> c lb.**

LARD No Limit 4 lbs. for 25¢

SUGAR CURED

**Side Bacon lb. 14<sup>1/2</sup> c**

Smoked

**PORK SAUSAGE lb. 19¢**

Kampfer's "Hi Grade"

**Liver Sausage lb. 12<sup>1/2</sup> c**

|                       |                   |
|-----------------------|-------------------|
| <b>CHICKENS</b>       | <b>PORK CHOPS</b> |
| Fresh Dressed lb. 15¢ | Loin Each 3¢      |

Small Tender Skin

**WEINERS lb. 15c**

170 N. Commercial In Peerless Bakery

**Kampfer BROTHERS**

484 State • Open Saturday Nites Till 9:00 • Phone 9193