

# Goggin, Demaret Are Finalists

## Pair to Meet For 1st Cash

### \$1000 Up on 72 Hole Try Over Frisco's Merced Course Today

By RUSS NEWLAND  
SAN FRANCISCO, Jan. 20.—(P)—Charging home in par-shattering stretch drives, Willie Goggin, local professional, and Jimmy Demaret, Houston, Texas, entry, became finalists today in the \$5000 San Francisco match play open golf tournament.

The two survivors of a starting field numbering more than 200 of the country's leading fairway marksmen will meet tomorrow over the par 36-26-72 Lake Merced course for first money of \$1000.

Goggin, completing a two-day rout of some of the biggest names in golf, crashed through his semifinal eighteen with a 2 and 1 victory over Craig Wood of Marquette, N.Y.

Demaret polished off a former Texas and the defending San Francisco open champion, Dick Metz of Oak Park, Ill., 4 and 2.

The winners finished their next to the last round three under par figures. Goggin was one down to Wood at the ninth but fired four birdies at his rival on the incoming stretch to take the lead at the 11th for the first time and maintain the advantage until the match ended on the 17th with each carding birdies from long putts.

## Between Football Seasons



If you are one of those persons who wonders what football coaches do in the off-season, this photo will answer you partly. The artist immersed in work of reproducing a desert scene at Phoenix, Ariz., is Bob Zuppke, coach of the University of Illinois. His paintings are well received.

# Olds Sets Up Sales Record

## 51,265 Cars Are Sold In Last Quarters of '39; '40 Outlook Good

Oldsmobile sales at retail, during the last quarter of 1939, were the greatest for this period of any year in the company's long history, according to a statement issued today by D. E. Ralston, general sales manager.

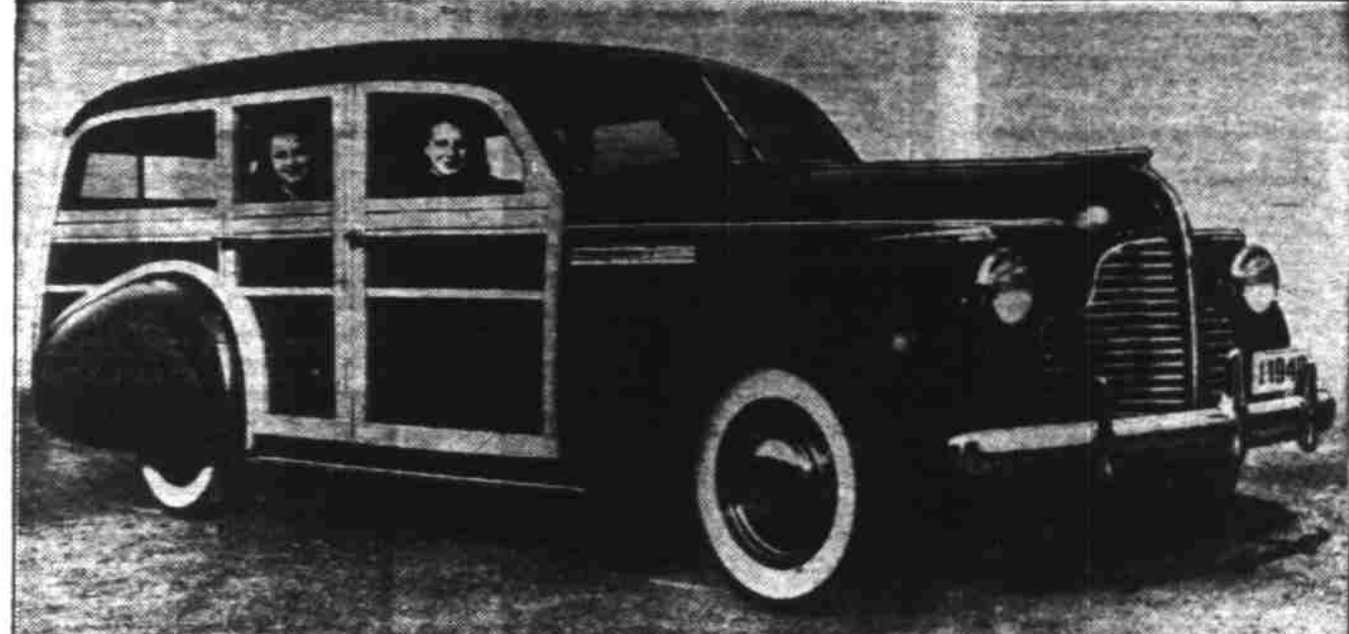
"Sales of Oldsmobile aires and eights during the month of December, of 17,617 cars, boosted our final quarter figure to 51,265 cars to establish this new high," said Ralston. "Sales for the last ten-day period of December totaled 5079 cars and made a gain of 13 per cent over the 5015 cars sold during the same period last year," he added. "Oldsmobile sales for the month of December exceeded the 14,782 cars sold in December of the previous year by 19 per cent.

"During the calendar year, Oldsmobile dealers sold at retail a total of 149,732 cars compared to 96,559 cars sold during 1938, for a gain of more than 54 per cent."

Ralston stated that Oldsmobile production for the last quarter of 1938 also reached a new high in company history, with a total of 60,053 cars.

"Prospects for continued sales gains have been definitely established," said Ralston. Business generally has shown marked strength and improvement. This fact coupled with the nationwide acceptance accorded Oldsmobile's three new lines of cars for 1940, indicates that the present buying activity will be maintained and further increases made during the months to come."

# Buick Announces New "Estate Wagon"



Addition of the new "Estate Wagon" to its line of 1940 models is announced by the Buick division of General Motors corporation. Of the popular station wagon type, the new model is built on the Series 50 Super chassis, of 121-inch wheelbase, and is powered by the Buick valve-in-head straight eight engine. Features of the new estate wagon are luxurious interior trim and upholstery with foam rubber and luxury springs in all seat cushions and equipment identical with that used in passenger cars of this make. Ample room for six passengers with large luggage or parcel carrying capacity is provided. The new estate wagon is in Buick's lower medium price range.

# DeSoto Raises Engine Power

## Weight Kept Same; Valve Openings Increased; 2 Ratings Given

One of the most important improvements made in De Soto this year is the increase in power output of the L-head engine to 100 horsepower with the standard cylinder head, and 105 with the special high-compression aluminum head.

Because of the stepped up horsepower, and because it has been accomplished without increasing engine weight, the 1940 models have proved to be faster in getaway, quicker in pickup through all speed ranges, and supplied with considerably more reserve power for emergencies, the manufacturer reports.

Partially responsible for the greater horsepower are high lift camshafts which increase the valve opening and consequently step up torque and power. The engine is still of the high compression type. It is mounted on floating power mountings which cushion out vibration before it reaches the car frame.

Specifications reveal such engineering features as full length water jackets, and water distributing tube which carries a cooling stream direct to valve seats. The carburetor is of the down draft type and includes an automatic electric choke, the water pump is generator driven, and the clutch is a 10-inch single dry plate variety with vibration dampener and sealed-in lubricants in both the release and pilot bearing.

# WSC Nets 52-45 Overtime Victory

PULLMAN, Wash., Jan. 20.—(P)—Washington State college, never in the lead through the regular playing time, loosed a withering attack in an overtime session tonight and defeated the University of Montana Grizzlies, 52 to 45, in a red-basketball battle.

Bud Olson, dynamic little state college guard, piloted his Cougar mates to the triumph by scoring five overtime points and passing to John Hooper to set up another pair.

Olson banged the ball into the cup on the par three, 200-yard 14th hole. It squared the match for him and he went on to win at the 18th. Before that he had been three down at the 11th.

# Brooks Outhoop Parkers, 37-28

Brooks, powerhouse of the city league, encountered a stubborn resistance before they defeated Parkers, 37 to 28, in last night's preliminary to the Willamette Oregonians bill.

Big Bill Anton angled in 12 points to head the victory.

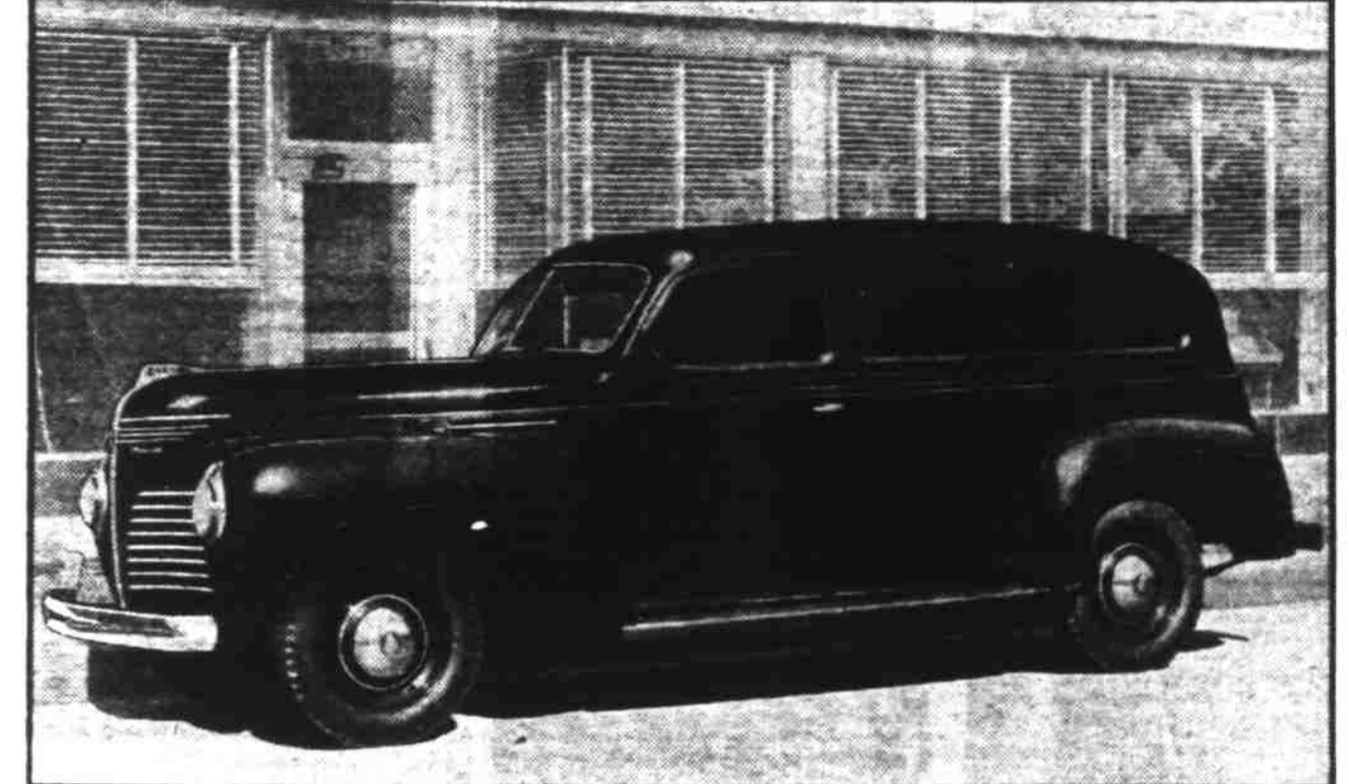
Brooks 37 28 Parkers  
William 11 R. Lindstrom  
Stewart 1 B. Lindstrom  
Anton 12 Haek  
Shinn 2 3 Hill  
Catherwood 10 6 Hinman  
Subs, for Brooks: Joyce 4, For Parkers: Wickert 6, Upston 2.

# Longview Takes Vikings on Mats

Though looking much better, and winning half the 10 matches, Salem's matmen dropped another decision yesterday, a 25 to 18 loss to Longview high. The upriver boys won four matches by falls, while Salem could win two by that route.

Results:  
95-lbs.—Jones, L, fall in 3:23 over Knedler, S.  
105-lbs.—Ray Wilson, S, decision Kelly, L.  
135-lbs.—Pidd, L, fall in 5:32 over Kilgore, S.  
125-lbs.—Stackley, L, fall in 2:32 over Ole Wilson, S.  
125-lbs.—Gauthers, L, fall in 4:12 over Sheldon, S.  
145-lbs.—Mudd, S, decision Yasutake, L.  
155-lbs.—Smathers, L, fall in 1:32 over Ullman, S.  
135-lbs.—Sluder, S, fall in 2:36 over Richter, L.  
150-lbs.—McFarland, S, decision Moody, L.  
155-lbs.—Swingle, S, fall in 1:49 over Ledford, L.

# Two New Commercial Cars Announced



Two new Plymouth commercial cars were announced by the factory last week. Shown above is a new 1940 Plymouth panel delivery—just added to the line in company with a new all-purpose "Utility" sedan. Both combine passenger car beauty and comfort with generous load-carrying space. The new panel delivery is mounted on the big "luxury-riding" chassis of the 1940 "Roadking," which has a 117-inch wheelbase. Individual coil front springs and steering post gearshift are standard, and the large panel body contains more than 124 cu. feet of load space. Plymouth's L-head "floating power" engine, four rings per piston and other quality features mean lower operating costs for commercial car operators. Its size is designed for businesses that have been using vehicles too large for their requirements, because the only other choice was units of too little load space.

# Oregon Visitor Dies, Train Fall

RENO, Nev., Jan. 20.—(P)—Believed to have fallen off an east-bound passenger train, the mangled body of Lee Braswell of Thayer, Mo., was found near a bridge in the Truckee river canyon 20 miles east of here this morning.

COTTAGE GROVE, Jan. 20.—(P)—Lee Braswell, whose mangled body was found on a Nevada railroad track today after he had evidently fallen from the observation car of an eastbound passenger train, is the father of Roger and Orin Braswell, Cottage Grove. First reports said the dead man were brothers of the local man. He is also survived by his former wife, Mrs. Bessie Braswell, Cottage Grove, whom he had been visiting. His two sons are going east to Missouri for the funeral.

# AMAZING METHODS RELEASE FULL EFFICIENCY OF WORLD-FAMOUS PENNSYLVANIA OIL!

## HYVIS REFINERY ENGINEERS DEVELOP NEW SUPER-OIL!

● Pennsylvania oil, long recognized as the finest lubricating oil in the world, NOW exceeds all the previous standards of lubricating efficiency through HYVIS's new methods.

## 27% LESS CONSUMPTION

Tests prove that the NEW HYVIS delivers more uniform and lasting lubrication at sustained high speeds with 27% LESS consumption. Each quart will give you 27% more lubricating service.

## 22% LESS CARBON

In HYVIS the carbon-forming properties have been eliminated as much as 22%. A clean carbon-free motor means added zip when you step on your accelerator.

## 41% LESS SLUDGE

Oil sludge, dirt and grime have been the demons that wear pistons and cylinder walls. You'll save on future overhaul bills by using the New Super Refined HYVIS NOW!

**WIGGINS COMPANY, Inc.**  
105 N. W. Park  
Portland, Ore.

## Gervais Annexes Double Hoop Win

GERVAIS, Jan. 20.—The Gervais teams lost and won over St. Paul in a double-header game on the Gervais floor Friday night.

Gervais B 16 1 St. Paul B  
St. Paul 21 16 Gervais A  
J. Smith 7 6 Blerly  
Faber 17 King  
Bernard 7 3 Martin  
Mullen 3 Ballweber  
Coleman 7 5 LeBrun  
Subs, Gervais: Brown 2.

## US Bank 34, Turner 27

TURNER—The US Bank team of Salem defeated Turner here Friday night, 34 to 27, with King collecting 17 points.

Turner Tigers 27 34 US Bank  
Cox 2 9 W. Bertelson  
Schiffner 2 2 Steed  
Metcalfe 4 17 King  
Bones 14 6 Bush  
Barber 5 6 Reinwald  
Substitutes, for Turner: Meshelle 2.

## Deschutes Seeks Trout

BEND, Jan. 20.—(P)—The state game commission will be asked to distribute 6,500,000 trout in the mid-Cascade and upper Deschutes country streams, the Deschutes County Sportsmen's association decided today. More German brown trout are sought for the mid-Cascade area.

## Otis Harlan Dies

MARTINSVILLE, IND., Jan. 20.—(P)—Otis Harlan, 75-year-old retired veteran of the legitimate stage and moving pictures, died here today at the home of a daughter, Mrs. W. E. Kennedy.

Harlan, who first appeared on the stage in 1887, retired last summer after 18 years in Hollywood, Calif. He was the leading comedian in the Follies Bergeres theatre in New York in 1912.

## Hour Cuts Opposed

PORTLAND, Ore., Jan. 20.—(P)—The Pacific northwest branch of the Associated General Contractors of America went on record today opposing any reduction of working hours below the day and week requirements of the federal wage-hour law.

## World Famous AKRON TRUSSES

Correctly Fitted We Guarantee Comfort and Security

**CAPITAL DRUG STORE**  
405 State, Cor. Liberty

**DR. CHAN LAM**  
CHINESE MEDICINE CO.  
393 1/2 Court St., corner Liberty. Offices open Tuesday & Saturday only, 10 a.m. to 1 p.m. 6 to 7 p.m. Consultation, blood pressure & urine tests are free of charge.

## Tommy Lloyd Purchased By Vancouver From LA

LOS ANGELES, Jan. 20.—(P)—Catcher Tommy Lloyd was sold today by the Los Angeles baseball club to Vancouver of the Western International league.

Lloyd was released by Sacramento after receiving a knee injury and came to the Angels in midseason last year. He was rated a promising young hitter but got little chance to play.

## Mill City Wins

MILL CITY—The local high school quint handed Stayton Marion county B first league defeat of season here Friday night, 22 to 18.

Mill City 22 18 Stayton  
Morreel 11 2 Hazel  
J. Lalack 5 9 Jordan  
D. Schroeder 2 1 Mielke  
Wilson 1 2 Proctor  
Day 4 Lewis  
Substitutes, for Mill City: Kelly 8.

# Cross Word Puzzle

1	2	3	4	5	6	7	8	9	10	11
12				13				14		
15				16				17		
21	22					23	24			
25				26	27			28	29	30
32		33					34	35		
36						37	38			39
			40	41				42	43	
44	45	46				47	48			
49				50				51	52	53
54				55				56		
57				58				59		

**HORIZONTAL**

1—lith  
5—fore-part of ship  
9—whim  
12—assert  
13—cotton fabric  
14—past  
15—foundation  
16—diakia  
18—adhesive mixture  
20—woolen fabric  
21—thin soap  
22—marsh grass  
25—electrified particle  
26—consumer  
28—morose  
32—agree  
34—to stow in vessel's hold  
36—observed  
39—turn to off-side  
40—edible rootstock  
42—implore  
44—cavalry arm  
47—angler's basket

**VERTICAL**

10—eager  
11—achieved  
17—grasslike herb  
19—eachew  
21—diagonal line across a fabric  
22—a flower  
24—Gaelic  
27—move  
28—freeze together again  
30—layer of the iris  
31—reward  
32—to go in  
35—narrow woven fabric  
38—physician  
41—tapestry  
43—animal related to monkeys  
44—long seat  
45—greedy  
46—curve  
48—split (pharm.)  
50—of each  
59—salt  
63—timid

Herewith is the solution to Saturday's puzzle.

ORASTERE SPA  
LAC LURID HAG  
LAME ACIDULATE  
SHACK SHAKERS  
COTE STATE AL  
EVEZELATE EPI  
ELEVATOR SWIDE  
STRAS STEMI  
STALEMATE IITS  
EAT REGAL TICE  
ADD STORE EON

Average time of solution: 27 minutes.  
Sponsored by King Features Syndicate, Inc.

# Pattern



By ANNE ADAMS  
Smart "home girls" know that looking fresh and pretty round the clock is a modern necessity. No excuses are needed when you greet unexpected callers in this crisp -a-celery, fresh-as-a-daisy dress, Anne Adams' Pattern 4367. It's a quickly stitched square necked princess style, softened through the bustline by gathering. The center panels, front and back, look striking on the bias if your fabric has a definite print pattern. A wide sash may come from the sides of the panels to tie in a perky back bow or may be omitted. Pockets shaped like flower pots, bright buttons at the waistline and lacy edging here and there give a dainty, piquant flavor.

Pattern 4367 is available in misses' and women's sizes 14, 16, 18, 20, 32, 34, 36, 38, 40, and 42. Size 16 takes 4 1/2 yards 35 inch fabric and 1 1/2 yards edging.

Send FIFTEEN CENTS (15c) in coins for this Anne Adams pattern. Write plainly SIZE NAME ADDRESS and STYLE NUMBER.

"Now is the time to prepare for Spring," says Anne Adams about her NEW SPRING PATTERN BOOK which is now ready for you to order. It's alive with attractive styles including a youth corner for tots, teens and twenties, evening-belle frocks, spring bridal finery, carnival costumes and gay prints. You will even find balanced styles for scale tipping matrons and charm shop suggestions for forty plus.

The book is fifteen cents but when ordered with a pattern, which is also fifteen cents. "THE TWO TOGETHER ARE TWENTY FIVE CENTS." Send your order to The Oregon Statesman, Pattern Department.

# Gashouse Tigers, Aces All Win in SYC Opening

Saturday night Salem Youth Center hooping found the Gashouse Tigers whipping the Lion Tamers 24-16 and the Aces downing the Bone Crushers 11-8.

The scoring, for Aces: Tricker 6, Olson 2, Curtiss 2, Keuscher, McKay 2, for Tigers, Frantz, Pettitcord 2, Riley 1, Hannum 10, Facherio 4, for Lion Tamers, Causey, Durham 4, Martin 4, McQuire 6, Fox 2, for Bone Crushers, Andrews, Gorman, Kerber 5, Scofield 2, Farlow.

# HOW EVERYBODY CAN AFFORD DENTISTRY

Pay by week or month when credit is approved.  
One whole year to pay.  
No Carrying Charges or Interest.

## DR. PAINLESS PARKER SAYS:

"You don't have to be afraid of the bogey of dental costs under this credit plan, because it enables you to spread your payments over as long a period as 52 weeks. Have your work done right away and pay later, by week, or month."

**LIFELIKE DENTAL PLATES**  
Made from newly-improved transparent plastics as now featured by dentistry as a feature to plate-wearers.

## DR. PAINLESS PARKER DENTIST

SALEM OFFICES - Telephone Salem 8825  
State and Liberty Streets

Others in Eugene, Portland, Tacoma, Spokane, Seattle and in All Leading Pacific Coast Cities