

Wheat Prices Still Sliding

Closing Prices 9 to 11 Cents Below Peak of December

CHICAGO, Jan. 12.—(AP)—The wheat price slump which has been in progress for about two weeks was extended today as the market tumbled two cents a bushel before rallying to erase half of the loss.

Dollar quotations were wiped off blackboards for the first time in almost a month and closing prices were 9 to 11 cents below the two-year peaks established December 19.

Selling came from all types of traders. There was a mixture of stop loss liquidation and closing out of lines requiring additional margin.

The current wheat outlook, traders pointed out, suggests a July 1940 carryover of about 1,400,000,000 bushels or 200,000,000 more than a year earlier and a new record figure.

Export trade continued to find mild stimulus in recent large scale British purchases, with Scandinavian buying approximately 120,000 bushels of Canadian.

Farm Electricity Programs Planned

A rural electrification meeting at Chemawa grange hall next Tuesday and Wednesday will start off a series of shows arranged by County Agent Harry L. Riches through the Oregon State college extension service.

Public utility companies and local equipment dealers will cooperate in the programs, featuring both discussion and display of use of electricity on the farm.

Second session will be at Silverton army January 18 and 19. Discussion programs will include information on electric wiring by W. R. Volhege of the state bureau of labor, home lighting, refrigeration, electric brooding, poultry house lighting and water heating, egg room coolers, ventilators, electric irrigation, pig brooders, feed grinding and mixing, corn drying and even fly electrocutors.

State college staff members, headed by F. E. Price, in charge of research in agricultural engineering, and Everett Davis, agricultural engineer for the extension service will take part in the program together with rural service specialists of the power companies. Both commercial and home electrical equipment will be displayed.

Inspectors Find Adulterated Oil

Fifty-three gallons of olive oil branded as "Imported Pure Virgin Olive Oil," seized by the Portland office of the state department of agriculture, are a long way from pure, the department's chemists declare.

The olive oil is heavily adulterated with cottonseed oil, the analysis shows. A hearing held earlier this month lends department officials to believe that they are on the track of uncovering extensive misbranding operations on the part of olive oil dealers and distributors in a neighboring state.

United States food and drug officials are cooperating in the olive oil investigations.

Stocks and Bonds

Table with columns for STOCKS, BONDS, and AVERAGES, listing various market indices and their values.

Portland Grain

PORTLAND, Ore., Jan. 12.—(AP)—Wheat: Open High Low Close May 1939-40 84 84 84 84

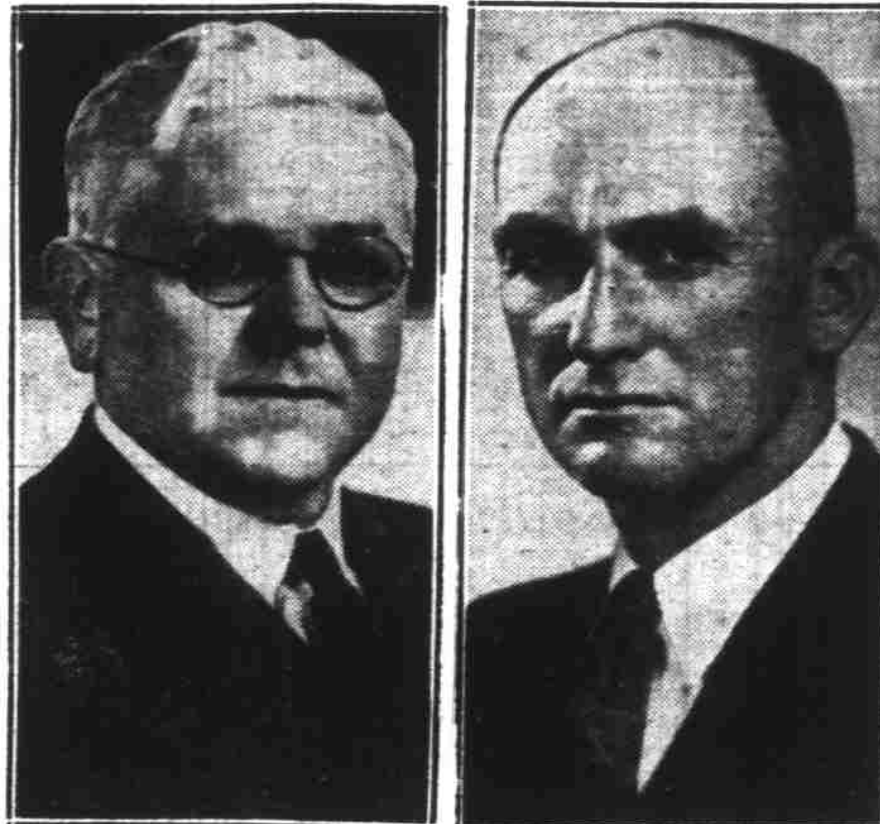
Portland Livestock

PORTLAND, Ore., Jan. 12.—(AP)—(USDA)—Hogs: Salable 100, total 225; steady.

Wanted

Wanted: Walnuts & Filbert Meats Also in Shell. KLOPFER PACKING CO. 280 S. High Ph. 7633

Stock Exchange Heads Elected



Membership of the San Francisco stock exchange elected recently George N. Keyston president of the exchange for the ensuing year, to succeed William H. Bacon, who has held the office for two years.

Salem Market Quotations

(Buying Prices) (The prices below supplied by a local grower and indicative of the daily market prices paid to growers by Salem buyers but are not guaranteed by The Statesman.)

Table listing various market quotations including bananas, hands, grapes, lemons, oranges, and various vegetables.

Woodburn DAR Has Meeting

WOODBURN—The Belle Passi chapter of the Daughters of the American Revolution met at the home of Mrs. H. F. Butterfield after a business meeting and a short program, luncheon was served by the hostess.

Quotations at Portland

PORTLAND, Ore., Jan. 12.—(AP)—Producers exchange Butter—Extras 31; standards 29; prime firsts 29 1/2; firsts 28

Wool in Boston

BOSTON, Jan. 12.—(AP)—USDA—Very little inquiry was being received for domestic wools in the Boston market today.

Fire Officials Are Relected

MT. ANGEL—Annual election of officers of the Mt. Angel fire department Wednesday resulted in the reelection of the three top officers.

Promoted to Corporal

INDEPENDENCE—Richard B. Madsen, son of Mrs. Lucrécia Madsen of route 1, Independence, who is serving in the US army as a member of the 29th engineers, topographic unit stationed at Portland, recently was promoted to corporal.

Teachers to Meet

WOODBURN—A call has been sent out to all teachers of Marion county who use the national system of teaching to meet in the club rooms of the Woodburn library January 16 at 8 p.m.

Plan Benefit Bridge

DALLAS—A benefit bridge party given by the Legion auxiliary will be held at the J. C. Tracy home Tuesday afternoon, January 16. Reservations may be made by telephoning Mrs. Otella Mardis, Mrs. Tracy, Mrs. A. J. Cleveland, Mrs. Roy Donahue, Mrs. Ray Scott or Mrs. Carl Baker.

Wanted

Wanted: Walnuts & Filbert Meats Also in Shell. KLOPFER PACKING CO. 280 S. High Ph. 7633

Bang's Control Best in Oregon

State Is Tops in Nation for Percent of Herds Under Test

Coincident with receipts of information that Oregon tops the nation in the percentage of herds under test for Bang's disease, Dr. W. H. Lytle of the state department of agriculture announced today that six Oregon counties have been recommended for the Bang's disease accredited free-area rating permitted when the percentage of infection is less than one per cent.

The six counties are Clatsop, Coos, Curry, Lane, Yamhill and Washington. The rating for which they are recommended means also that in each county less than 5 per cent of the herds had infected animals in the last test. Accredited counties must have all herds under quarantine and provisions must be made to police the county properly against the admission of infected cattle.

The report that Oregon leads the nation in percentage of herds under the Bang's disease tests has just been received from the federal bureau of animal industry. The Oregon percentage is 94.4 of all herds in the state. Virginia is next with 93.6 per cent and Washington third with 88.2 per cent, Dr. Lytle said.

He also said that seven additional western Oregon counties will be recommended for Bang's accreditation within another week.

Oregon Hop Mart Moderately Active

PORTLAND, Jan. 12.—(AP)—The Oregon hop market was moderately active this week on improved domestic inquiry, the federal marketing service reported today.

About 170 bales of the 1939 crop were sold by growers at 25 cents a pound, leaving about 3800 bales of certificated 1939 hops on hand. Growers hold about 400 bales of non-certificated supplies.

A few carloads of 1940 regular type hops were contracted at 22 to 23 cents a pound to growers. Other contracts covering seedlings 1940 hops were handled at 27 to 28 cents a pound.

The market was fully steady to firm at the slightly higher current prices.

Moving From Sunnyside

SUNNYSIDE—The Lewis L. Brown family, which has lived in the district for the past 10 years, is moving to the Liberty district. The Wilkerson place has been sold to Mrs. Smith of Portland.

Has Scarlet Fever

BETHEL—A case of scarlet fever has broken out in the Bethany district and the Reider Povurds home is under quarantine.

Has Scarlet Fever

BETHANY—A case of scarlet fever has broken out in the Bethany district and the Reider Povurds home is under quarantine.

Closing Quotations

Table of closing quotations for various commodities including chemicals, solvents, oils, and metals.

Oregon Hop Mart Spranger Heads Phone Company

BETHEL—The stockholders' annual meeting of the Big Four rural telephone company was held at the school Saturday night. Officers and directors reelected were: A. C. Spranger, director of line 109, president; E. E. Matten, director of line 19, vice president; Rev. S. Hamrick, director of line 68, secretary-treasurer; A. L. Schulz, director of line 66, O. H. Henke was elected as new director of line 67.

To permit making considerable improvement on the lines, a 20 per cent increase was voted on the upkeep charge. Much new wire will be purchased and some new poles. The group is still investigating the proposed dial system. W. R. Baker is the company line man and is in charge of all work.

Shake Well Before Using

By CLIFF STERRET

By CLIFF STERRET

By CLIFF STERRET

By CLIFF STERRET

By CLIFF STERRET

By CLIFF STERRET

By CLIFF STERRET

By CLIFF STERRET

By CLIFF STERRET

By CLIFF STERRET

By CLIFF STERRET

By CLIFF STERRET

By CLIFF STERRET

By CLIFF STERRET

By CLIFF STERRET

By CLIFF STERRET

By CLIFF STERRET

By CLIFF STERRET

By CLIFF STERRET

By CLIFF STERRET

By CLIFF STERRET

By CLIFF STERRET

By CLIFF STERRET

By CLIFF STERRET

Industrials Down In Stock Retreat

Average Makes Sharpest Drop Since September; Trade Bearish

NEW YORK, Jan. 12.—(AP)—Stocks again took the downward road in today's market with leading industrials retreating 1 to around 3 points.

Boardrooms seemed to be more bearish than for some time, especially regarding the possibility of new taxes being levied by congress. In addition, many felt business prospects were clouding, notwithstanding opinions of some observers that a spring recession would be moderate.

The Associated Press average of 60 stocks was off 9 of a point at 49.7, sharpest day's drop since Sept. 18. The composite level today compared with 50.4 a year ago and was the lowest since Sept. 2, having wiped out virtually all of its war-boom upturn. Chartists, watching the averages, turned gloomy when it was realized the industrials had broken through what they referred to as the "testing point" of the November lows.

The day's turnover of 1,109,460 shares was the largest since Dec. 29. It amounted to 844,820 yesterday.

Principal share losers included US Steel, Bethlehem, Chrysler,

Eastern Firm Buys Mitoma Hop Ranch

Sale of the 160-acre Mitoma hop ranch near Independence to the John I. Haas company, New York hop growing and brokerage firm, was announced yesterday by E. F. Pearson, head of the Mitoma company.

Decision of the big New York operators to add to their Willamette valley holdings was viewed as an indication of faith in the future of the hop industry in this area.

The Mitoma property has 114 acres in production and yields about 160,000 pounds of hops in a normal year. Equipment includes a six drying kilns and a complete acreage.

Among those holding an interest in the Mitoma company are Dr. H. H. Olinger, secretary and treasurer of the company, and Sam Adolph and Frank Durbin, Jr.

The Haas company is one of the largest in the hop industry, it is represented in Oregon by H. W. Hay of Hillsboro.

The property involved in the transaction has been valued at approximately \$50,000.



POLLY AND HER PALS



MICKY MOUSE



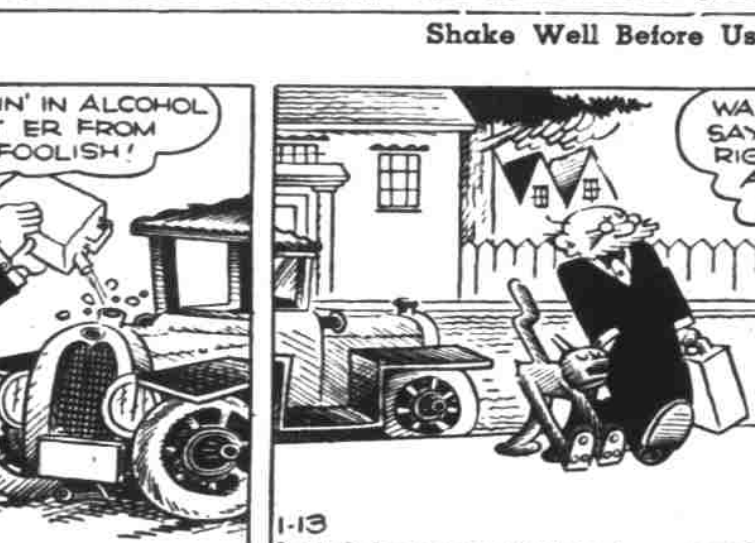
LITTLE ANNIE ROONEY



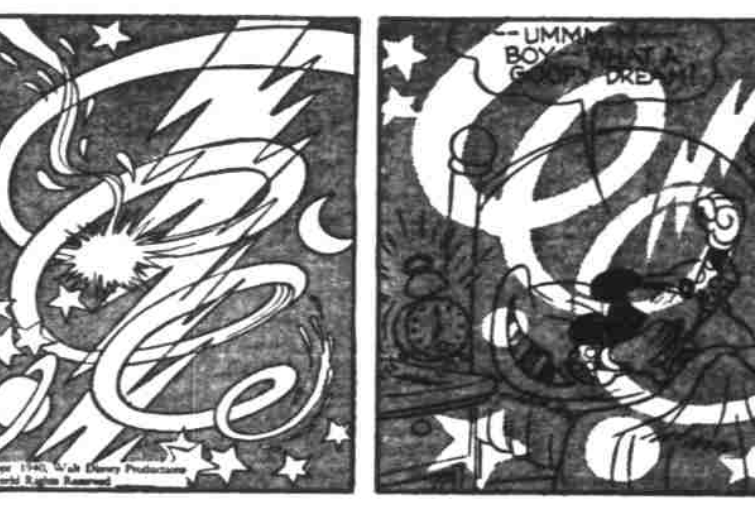
TOOTS AND CASPER



THIMBLE THEATRE



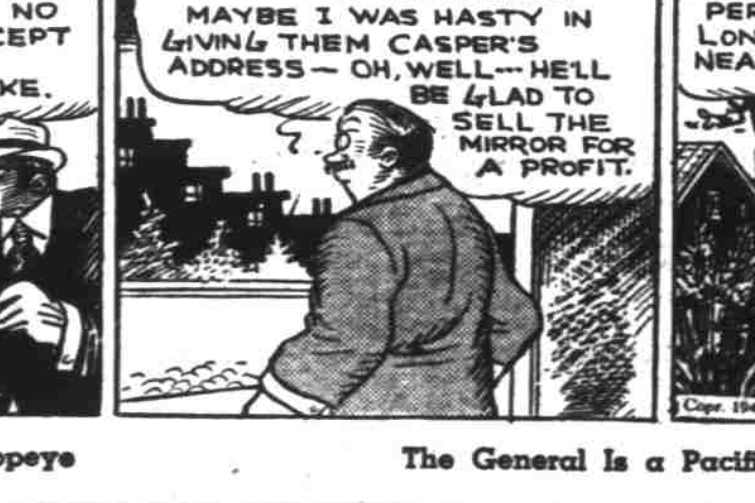
MICKY MOUSE



LITTLE ANNIE ROONEY



TOOTS AND CASPER



THIMBLE THEATRE



THE GENERAL IS A PACIFIST



SALEM ENGRAVING



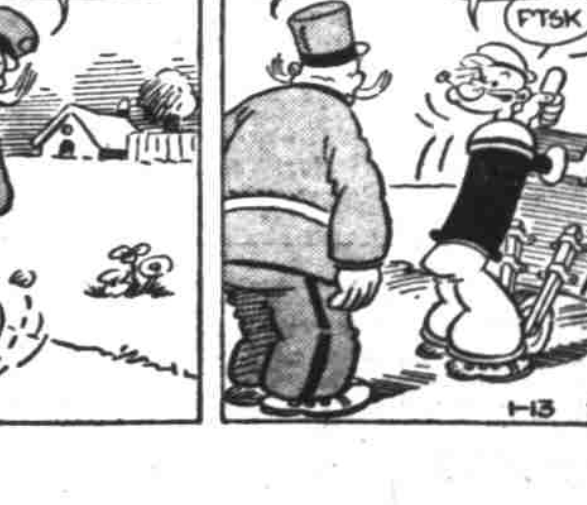
OR ELSE SAVE A GOOD DOSE OF THAT STUFF FOR THE LIVING ROOM RADIATORS



THE PATIENT HAS A RELAPSE



A MIRROR OF ENCHANTMENT



CASPER, THIS OLD MIRROR ENTRANCES ME!