

Dedicatory Program at Jefferson Institute Site Is Today

Boulder Will Mark Academy

Was First Academic School in Polk County; DAR Arranges Event

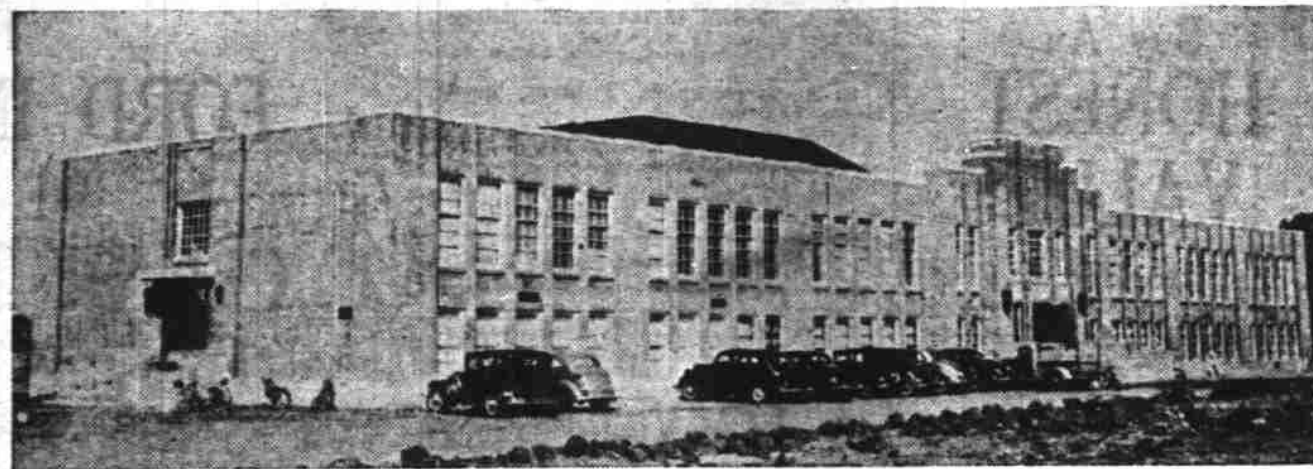
DALLAS—Of interest to Polk county residents is the dedicatory program which will be held Sunday afternoon at the site of Jefferson institute, the first academic school established in this county. The school was located about three miles east of Dallas.

The Polk county court has secured a large granite boulder to mark the site of this pioneer school and the Chemeketa chapter, DAR, is placing a bronze marker on the boulder which will contain a brief outline of the outstanding historic events which took place there.

An interesting program for the occasion has been arranged by Mrs. Blanche Eakin of Dallas and includes: musical numbers by Dallas city band; greetings, Mrs. Herbert Ostlund, regent of Chemeketa chapter, DAR; invocation, Walter Duff, Jr.; vocal duet, James Leitch and Paul Launer; address, Arthur Veazie of Portland; vocal duet, James Leitch and Paul Launer; address, Oscar Hayer of Dallas; dedication of marker, Mrs. Ostlund; vocal duet by James Leitch and Paul Launer. Oscar Hayer, who is to speak on the program, is a grandson of Carey Embree, prominent Polk county pioneer on whose land the school was located. Arthur Veazie of Portland, who is also to speak, is a grandson of John Lyle, the first teacher at the school.

Jefferson institute was built in 1845-46 and was a center of pioneer life. Both county and circuit court convened there and community church services were held in the school.

Silverton's New \$150,000 High School Building



This modern high school building at Silverton will be used for the first time Monday morning when the fall term of school opens.

Children End Vacations, Go Back To School Throughout Valley; Some Start Last Week, Others Tomorrow

SWEGLE—The Swegle school will open Monday with the same teaching staff as last year. Principal Ralph Nelson comes back for his third year. Mrs. Emma Miller of Swegle community will teach elementary grades and Miss Mary Elent Mitchell of Boise, Idaho, will teach primary.

Nelson has spent most of the summer at his Woodburn home, with a trip to San Francisco and other points in California and southern Oregon. Mrs. Miller has attended the university at Eugene. Miss Mitchell has attended the university at Boise.

As it was necessary to occupy the new building before it was finished, the work of completing the plumbing and drainage has been finished this summer, with a new electric pump and drinking fountains. Landscaping will be begun this fall.

Swegle community now has one of the most modern school buildings in Marion county, in its class, it is believed.

TURNER HAS 156

TURNER—School opened Monday with good attendance considering the continued seasonal outside work. High school registered 61. Half are freshmen, with 12 more students coming Monday.

Elementary enrollment totals 90 and is expected to be above 100 next week.

Virgil Scott heads the school for his second year. Mrs. Edna B. Allen of Jefferson and Miss Gertrude Roelcke of Salem are each entering their fourth year and Orva Nickula his second year. Mrs. Blanche Williams heads the grade school for her sixth year. Mrs. Barbara B. Lovick, a recent eastern teacher, will have the fifth and sixth grades, Miss Dorothy Dental of Aurora, third and fourth grades, and Mrs. Ethel Sundlie, Salem, will have the primary work. Mrs. Lovick will handle the grade music.

The PTA is sponsoring a reception for the teachers Friday night, September 29, at the school auditorium. The PTA will hold its first meeting of the school year the second Monday night in October.

MONMOUTH RENTS BOOKS

MONMOUTH—Monmouth high school will again offer students the textbook rental system which was used by more than 90 per cent last year. Principal M. A. Thompson expects a slight increase in high school attendance. A new bus route has been added, and new bus bought. The new route extends into the Suver district. H. F. Couey is the driver. On the Lewisville route, Fred Scholl will replace Laird Lindeman as bus driver. Preston Green will again have the Fairview route.

The faculty of the high school is unchanged except in the department of domestic science and art. Miss Doris Simonds of Bonners Ferry, Idaho, replaces Miss Marjorie Nash, who resigned to be married. Miss Simonds, who holds a degree from Oregon State college, taught in Alesha high school last year. While attending OSC she was a delegate to the American-Japanese student conference in Tokyo, Japan.

Miss Edith Clark returns to the department of languages. She spent part of her summer at the Oregon beaches. J. C. Blevins, commercial instructor, with Mrs. Blevins visited his brother in

Nearly 4000 See New Prep School

SILVERTON—Almost 4000 visitors trekked through the new \$150,000 senior high school Friday night at its first open house to the public.

O. E. Lee, chairman of the school board and his associates were present to greet the visitors. H. W. Adams and the high school teaching force were also about, in many instances the teachers were in their rooms explaining the workings of their departments and giving the parents an opportunity to meet them in person.

Flowers, gifts from the various business houses and service clubs about town, were very much in evidence. Visitors were not from Silverton alone but from Salem, Woodburn, Mt. Angel, Molalla, Scotts Mills and Stayton, as well as many of the rural communities.

AT HOSPITAL

SILVERTON—Mac Mulkey is at the Silverton hospital for medical observation. He will be there for several days.

George Purdue is also being treated at the local hospital. Miss Erma Johnstone of Salem, who submitted to a major operation Sunday night, is reported as getting along as well as could be expected.

Silverton Will Prepare Budget

Committee Will Formulate Preliminary Draft Monday Night

SILVERTON—Silverton's budget committee will hold its first meeting Monday night at the city hall. A preliminary draft will be prepared to be completed at subsequent meetings. When finally completed the budget will be submitted to the city for acceptance or rejection. Serving on the committee are Earl Garver, Earl Adams, Robert Duncan, Dr. C. R. Wilson, Norris Ames, and Tom Anderson. The city common council will meet with the committee. Mayor Zetta Schlador was one of the Silverton hunters to join the crowd Wednesday. Mayor Schlador chose her spot in the Toledo county where her husband, C. J. Schlador, is associated with the Tri-C camp. She will return early in the week.

Dr. P. A. Loar, president of Silverton's planning council, will be guest speaker at the Stayton Lions club Tuesday night. Dr. Loar will speak on the work of the local planning council.

V. V. Ernston has resigned as superintendent of the Silverton Canning company to accept a position as head of the business school at Walla Walla college in Washington. The Ernstons came to Silverton three years ago from Portland.

John Porter, president of Silverton's common council, is reported greatly improved at his home on South Water street. Porter had been critically ill for six weeks but has been improving the past two weeks.

GOES HUNTING

LINCOLN—W. R. Edwards and his cousin Claude Edwards, of Roberts, left Tuesday morning on a deer hunting trip to Prineville. Roy Hammer, another Lincoln man, left this week for a hunting trip on the John Day.

College Rector



Rev. James Koessler, OSB, new rector of Mt. Angel college and preparatory school which opened classes Wednesday.

Lebanon Legion Has Installation

LEBANON—Santiam post 51, American Legion and auxiliary, held their first regular meeting of the season Tuesday night at the American Legion hall. Installation of new officers was held.

Mrs. Sylvia Southard, district chairman, installed the new auxiliary officers including:

President, Pearl Ramsey; first vice, Lottie Simons; second vice, Martha Enley; secretary, Velma Bohlen; treasurer, Alvina Michelson; historian, Grace Lawrence; chaplain, Margaret Groves; sergeant at arms, Bado Zimbrick; color bearer, Dorothy McKinney.

Post officers were installed by Department Vice Commander Ralph Hargett as follows:

Commander, O. M. Stevenson; first vice, P. T. Tweed; second vice, Ralph Wier; third vice, Art Wilson; adjutant, Glen Wallace; service officer, Ralph Hargett; finance officer, Roy Downing; chaplain, Milton Coy; sergeant at arms, Henry Bohlen; historian, Dave Stritmatter.

Mt. Angel Has More Students

20 Per Cent Enrollment Increase Shown Over Last Year

MT. ANGEL—Pre-nursing courses, showing a 45 per cent gain in enrollment, topped increases in all departments at Mt. Angel normal and college it was disclosed Wednesday, when final registration figures were released. All other departments registered a 20 per cent increase over last year.

Following the arrival on the campus of students on Tuesday, which was the final registration day, the 1939-40 school year was reverently inaugurated Wednesday with a high mass sung by Rev. Vincent Koppert, OSB, Ph.D., dean.

Records show that California, particularly the Los Angeles area, Washington, Idaho, Montana, the middle states and all sections of Oregon are represented in the student body. Day students in large number are registered mainly from the Silverton, Woodburn, and Mt. Angel communities.

Will Elect

Opal Bolme, Silverton, president of the student body, states that the election of a vice-president, secretary, treasurer, and sergeant-at-arms will be announced soon and has already begun plans for the welcoming of freshman women.

Mt. Angel academy also announces a record enrollment. Election of student body officers will take place within the next few weeks according to Florence Greiner, Condon, president.

Rev. James Koessler, OSB, popular with the students as professor and athletic director, is the new rector of the college and high school. Also a favorite with the boys is the recently appointed seminary head, Rev. Damian Jentges, OSB.

Hazel Green Has Special Meeting

HAZEL GREEN—A special school board meeting has been called for Tuesday night at 8 o'clock to make arrangements for another school room and hiring another teacher.

When school opened Friday there were too many students for the two teachers to handle. Seventy-four enrolled and more are expected. The increase is due to many new families having moved into the community.

Woodburn Rotary Hears Coach Talk

WOODBURN—The Woodburn Rotary club held its regular weekly luncheon Thursday noon at the Woodburn hotel. Visitors for the dinner were Earl Howe, local nurseryman, Ivan Beers, local druggist, Bob Renn, president of the student body of Woodburn high school and an outstanding member of this year's football team, and Hal Chapman, high school coach who also was the speaker of the day and gave information regarding prospects of this year's football team.

A new member was taken into the club, Kilian Smith of the P. N. Smith Furniture company. The aims and objects of the Rotary club were announced for the coming year and mimeographed copies were presented to each member by the president, Burton Willeford.

The aims and objects include: support of the Boys' Builders club and of the Woodburn Boy Scouts; sponsorship of a Christmas lighting contest for the second year; sponsorship of wheelchair, two chairs are now in use and a third is to be purchased and put in use soon; sponsorship of the pet parade for the Woodburn fair; sponsorship of regulation of bicycle traffic and parking; extension of Rotary membership; sponsorship of athletic trophy award; Christmas fund for poor and needy; sponsorship of new concrete tennis court in the city park.

PACIFIX Automatic Water HEATER

30-Gal. Cap. **49.50**

40-Gal. Cap. **59.50**

Terms as Low as **\$1.60** Per Month

- Tank tested to 300 lb. pressure.
- Adjustable Thermostats.
- Guaranteed elements.
- Heavy insulation.
- Fully approved.

Now Available

GEO. E. ALLEN Hardware
236 N. Com'l. St. 4610

New Portable **Typewriters**

ROYALS
CORONAS
UNDERWOODS

Now is the right time to select that portable typewriter for the school year. We carry a complete stock of the finest portables to sell at

\$49.50
\$59.50
\$54.50
\$64.50

FALL SPECIAL
Rebuilt Typewriters

One Lot of **GUARANTEED REBUILT UNDERWOOD STANDARDS**
In Pica and Elite Type Faces

These re-built and guaranteed machines are selling at a close out price, only **\$32.50**

NEEDHAM'S BOOK STORE
465 State Street Phone 5802

GRAND ISLAND HAS 33

GRAND ISLAND—The grade school opened Monday with a total enrollment of 33 students, 12 in the upper room and 21 in the primary room.

Children in the first grade include Esther Culp, Joyce Tompkins and Sammy Korabaugh. The teachers are Mrs. Grace Duren, principal, and her daughter, Mrs. Ruth Stephens, primary instructor.

High school students in the district began their studies Monday at the Amity high school. Students entering as freshmen this year include Phyllis Mandigo, Wanda and Harold Chandler and Harold Culp.

GATES HAS 89
GATES—The Gates school has enrolled a total of 89 pupils, 25 are high school students. Jack Irvin as principal has charge of the coaching. Miss Margaret Miller, assistant high school teacher, has the seventh and eighth grade arithmetic classes, physical education and dramatics for the school. Carl Reid has charge of seventh and eighth grade physical education and English. Mrs. Vivian Hoening teaches fourth, fifth and sixth grades. Mrs. Irene Burgess has the primary, first, second and third grades. She also has the music for the school and the girls' glee club.

LAKE LABISH
LAKE LABISH—Lake Labish school district, 102 will open September 25 with Miss Josephine Cornoyer as teacher.

UNIONVALE HAS 37
UNIONVALE—The Unionvale school opened Monday, September 18, with 37 students enrolled, 10 of them were in lower grades. Ray Hibbs was the only beginner. Clifford Rich is the principal and Mrs. J. P. Doughty primary teacher.

46 AT NORTH HOWELL
NORTH HOWELL—Total enrollment for North Howell school so far this term is 46 pupils. Twenty-seven are in the primary room and 19 in the upper grades. First grade members are Donna Hagan, Janice Jackson, Nellie Melvin, Edward Flau, Donald Dunn, Alva Schmidt, Marvin Schirman, Nettie Alger and Robert Ebner.

18 AT SILVER CLIFF
SILVER CLIFF—School opened here Monday with 18 enrolled. Included are two sets of twins, Dorothy and Donald Brewer, Marie and Robert Charpiloz. Mrs. Iris Cheney, Thorildson of Silverton is the teacher.

HOPEWELL STARTS
HOPEWELL—The Hopewell school started Monday with 24 students enrolled, 12 in upper and 12 in lower grades. There were four beginners: Beverly Brown, Glen Reed, Steven Reed and Richard Ketchum. Mrs. Jessie Beatie is principal and Mrs. Ray Cosel primary teacher.

FASHION DETAILS THAT MAKE PLYMOUTH THE 1940 BEAUTY

Huge New Trunk is now illuminated. Spare wheel, mounted in right side, is more accessible.

Luxurious New Interiors. Wider, deep-cushioned seats. Increased vision through larger windows, windshield.

Sealed Beam Headlamps give 50-65% brighter road lighting without added glare.

New Rear Doors...full width at the bottom for easy entrance. Running boards are optional.

1940 PLYMOUTH. NEW STYLE MORE ROOM, LUXURY RIDE

BE SURE TO TAKE THE GREAT LUXURY RIDE

Sets moved farther ahead of rear axle...wheels new? It's a ride incredibly smooth, soft, relaxed.

STEERING POST GEAR SHIFT...STANDARD, ALL MODELS

STANDARD ON ALL MODELS

Shifting is a luxury, too—with steering post gear shift at no extra cost...new design transmission and clutch.

THE REAR SEAT RIDES LIKE THE FRONT

New chassis engineering, new body design, new appointments, all are part of the formula for the Luxury Ride.

This New Plymouth is the Biggest in History... the Low-Priced Beauty with the Luxury Ride!

LOOK at the new grace, luxury and distinction of Plymouth! Never has a low-priced car offered such value! You'll be amazed at Plymouth's new spaciousness... at the luxurious feel of the big Floating Power engine—Superfinished in vital parts for long-life smoothness.

Every new feature, every new engineering development, plays its part in bringing you a *Luxury Ride* at low price! Drive this new, big-value Plymouth today!

MAJOR BOWEN AMATEUR HOUR, C. B. S. NETWORK; THURS., 9-10 P. M. E. S. T.

Easy to Buy!

Convenient Terms

Your present car will probably represent a large proportion of Plymouth's low delivered price... the balance in surprisingly low monthly installments. Plymouth Division of Chrysler Corporation, Detroit, Mich.

All this *Luxury* AND LOW PRICE TOO!

1940 PLYMOUTH THE LOW-PRICED BEAUTY WITH THE *Luxury Ride*