

Oregon Geological History Explained

Prof. Herman Clark Tells Lions Region Has had Many Upheavals

The Oregon country has undergone more geological changes than many other parts of North America and as a result yields searchers exceptional specimens of the romance of the ages, geological development, Professor W. Herman Clark told members

of the Salem Lions club yesterday. The professor described the evolution of the Oregon area as it now stands, from its centuries-ago status as a part of the ocean through the gradual rise of islands in the present Siskiyou district and near the Baker-Grant county line on down to the rise of the Cascade mountains, resulting from numerous lava flows. Even within a few miles of Salem, he pointed out, fossilized shells indicating that the borders of nearby hills were once sea beaches, may be found. Professor Clark denied the fact that the best collections of geological specimens from Oregon had been taken outside the

state, particularly to the University of California. Willamette university's museum, now housed in the new library building, however, is being made a gathering center for specimens, some of which the Smithsonian institution has sought for its own collection, he added.

Hall Reroofed

SILVERTON.—St. Paul's parish hall is being reroofed this week under the direction of Arthur Steinberger. Men of the parish are donating their time. The roof leaked during the past winter.

Wins Award



Dr. Rudolph Matas, professor of surgery at Tulane University, New Orleans, La., who was recently chosen as first recipient of the distinguished service medal for "meritorious service in the science and art of medicine." The award, created by the American Medical association last year, was voted at the 89th annual convention in San Francisco. Recognition of the healing profession under past realistic governmental auspices was bitterly attacked and by some upheld during the meeting.

L. F. LeGarie to Head Groceries

Forty grocers of Salem and vicinity organized as the Willamette Valley Food Dealers association at a meeting at the chamber of commerce last night and declared its purpose to encourage and maintain enforcement of the state anti-price discrimination act which went into effect recently.

The dealers elected Lloyd F. LeGarie president, Arnold A. Krueger vice-president and C. M. Roberts secretary-treasurer. In addition to these officers the executive committee will consist of O. M. Lemmon, representing affiliated stores; Harry Pearson, independent cash stores, and R. H. Bailey, independent service stores. Features of the price act were discussed by Carl T. Pope of Salem and E. D. Snitor of Portland. The next meeting will be held at the chamber July 27.

Prominent Solons Wish Less Arming

(Continued from page 1) should lead the way in obtaining a disarmament agreement. I sincerely hope that before the large amount of money necessary to finance the expanded naval program is appropriated, every possible effort will be made to limit naval armaments."

Senator Vandenberg, a member of the foreign relations committee, said he would be in "cordial agreement" if the administration suggested a disarmament conference.

Senator Borah (R-Idaho), ranking minority member of the foreign relations committee, said he was "very much in favor" of a disarmament agreement "if it can be made effective without entangling us in other commitments." "But," he added, "I don't think we should agree to cooperate in policing the world in order to obtain disarmament."

'36 Tax Credit Date Extended

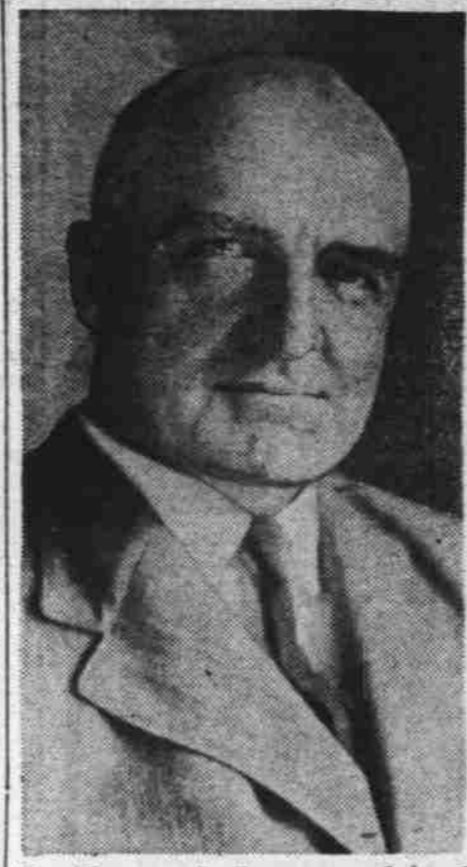
New Revenue Act Provides Relief to Employers Paying UCC Late

Commissioner of Internal Revenue Guy T. Helvering in a statement called attention to Section 810 of the recently enacted Revenue Act of 1938. This section is of particular interest to employers of eight or more employees who failed to make their contributions to the state unemployment compensation fund with respect to the calendar year 1936 prior to April 1, 1937. That date marked the end of the filing period, as extended, with respect to federal returns covering the calendar year 1936 required of employers under the provisions of Title IX of the Social Security act.

To be entitled to receive a credit of 90 per cent of the federal tax on account of contributions made to state unemployment compensation funds with respect to the calendar year 1936, employers were required to make such contributions prior to April 1, 1937. Due to the newness of the Social Security law and a failure on the part of some of the taxpayers to fully understand its provisions, various employers of eight or more were late in making their contributions to the states. Therefore, the 90 per cent credit could not be allowed in the federal returns under the law as it existed prior to the enactment of the Revenue Act of 1938, Section 810 of which extends the cut-off date for credits against the 1936 tax from April 1, 1937, to and including July 26, 1938.

Applicable Only to 1936 Commissioner Helvering explained that the relief provisions contained in Section 810 of the Revenue Act of 1938 are applicable only to the calendar year 1936. In a great many instances employers of eight or more who were denied the 90 per cent credit have filed claims for abatement or refund. In other instances the bureau of internal revenue has information which will permit the prompt adjustment of the returns. The commissioner pointed out, however, that the bureau probably does not have a record of some employers who paid the full amount of the federal tax and also made full contributions to the state unemployment compensation funds. In such cases the commissioner emphasized that the taxpayers affected have the privilege of filing claims for refund. Such claims may be filed within four years from the date the federal tax was paid to the collector of internal revenue, and will be considered for allowance, provided the contributions to the state unemployment compensation funds have been made on or before July 26, 1938. Where re-

Predicts Eruption



Dr. Thomas A. Jaggard, acclaimed by scientists as the world's No. 1 volcanologist, who on his recent arrival in San Francisco told reporters the world's volcanoes, including California's famed Mount Lassen and Hawaii's Kilauea, are on the verge of unusual activity. "It is not unlikely that Mount Lassen will, in the next few years, experience another major outburst," Dr. Jaggard said the most prolonged period of volcanic activity which Hawaii has experienced within a century may start within a few years and carry on for three decades. Protective dykes around the city of Hilo, in the Hawaiian group, the scientist explained, is possibly the city's salvation against Kilauea's lava flow.

Guardsmen Shoot Big Coast Rifles

249th Artillery at Work on Five Batteries at Fort Stevens

ASTORIA, Ore., June 16.—(AP)—Coast guardsmen encamped at Camp Clatsop opened gunnery practice today firing 37 millimeter sub-caliber guns mounted on 155 millimeter howitzer bases. The 218th field artillery men were at the gun stations on the dunes north of the camp.

At the same time the 249th coast artillery opened sub-caliber shelling in five batteries at Fort Stevens at the mouth of the Columbia river. As the artillery units, with full equipment in the field—including 12 big howitzers transported to Clatsop from Camp Clackamas—repulsed imaginary foes invading the Scotch-broom covered littoral, infantrymen of the 168th and 162nd regiments scurried over the dunes in extended order as the guard's encampment settled into stiff training routine.

Several bivouacs are planned, including one in the Lewis and Clark hinterland several miles northeast of camp. Colonel Edgar Thompson, commandant at Fort Stevens, warned everybody except guardsmen, to stay out of the military reservations which extend from the wrecked Peter Iredale off Hammond, Ore., north to the south jetty of the Columbia. He warned that the artillery practice makes the region extremely dangerous. Two infantry regiments will hold the first rifle drill and aircraft defense on Friday.

Sweden's King 80



King Gustaf V of Sweden, who yesterday celebrated his eightieth birthday in Stockholm. A week of festivities was declared in honor of the aged, but active monarch. Among the nationwide celebrations, marking the most brilliant ball of the season in which 800 of Sweden's prominent socialites took part, King Gustaf, despite his advanced age, still plays tennis daily.

Medics Want Eyes For Auto Drivers

SAN FRANCISCO, June 16.—(AP)—Certified eyes for automobile drivers and two pairs of glasses for every commercial motor vehicle operator requiring artificial aid to vision is the aim of the American Medical Association.

It went on record today as favoring licenses for all drivers. The commercial driver would be required to pass the standard eye test or get glasses that would permit him to qualify. When looking straight ahead he would have to show a 90-degree scope of vision; be able to distinguish red, green and yellow; be free of "double vision" and night blindness.

The private driver would have to pass a standard test not so rigid as that for the commercial operator. He would have to show a field vision of 60 degrees; vision impairment through being cockeyed or cross-eyed would have to be corrected and he would have to show "coordination of eye, mind and muscle." Each driver would have to be tested and re-licensed annually. The association's eye specialists sponsored the plan.

Clarke Is Honored By Dairymen Club

Roscoe W. Clarke was honored by the Salem unit of the Dairy Cooperative association by adoption of a resolution at the unit meeting at the chamber of commerce last night expressing appreciation for his seven years' service as its manager. He recently resigned the position.

The resolution declared Clarke had much to do with the successful development of the local association. David Saucy, Salem director in the general association, and Will Henry, manager, of Portland, spoke at the meeting, over which R. H. Clark, unit chairman, presided.

A brief musical program was presented by Jean Haines, piano soloist, and the Portland employees' quartet of the cooperative. Members of the quartet are Don Dixon, Earl Atkinson, Ed Maschofsky and Edwin Olson. G. C. Poe, head field director, is the quartet's director.

Marketing Study To Be Revealed

Robert Sprague, assistant advertising manager of The Statesman, will reveal findings of a study he has made of Salem as a market in comparison with 13 other towns of the same population and marketing area before the Salem Retail Merchants association at its noon meeting at the Quella today.

Sprague has gathered his data through a study of various factors making up a market. Part of his information on Salem's buying habits was gathered through questionnaires which housewives answered at the recent Statesman cooking school.

The study compares Salem with other cities of similar size in nine retail classifications. funds are made under the relief provisions herein mentioned, the law provides that no interest shall be allowed.



RED & WHITE WARM WEATHER FOOD

Radio Special Vienna Sausage, 4-oz. tin SEASIDE Both for 15c Lima Beans, No. 1 tin

Watermelons pound 2 1/2c

TOMATO JUICE Red & White 46-oz. tin 19c SUGAR Fine Granulated 10 lbs. 50c

CRACKERS Sodas or Grahams 2 lb. box 19c

IVORY SOAP 5-oz. 2 for 11c Red & White Floating Soap, 5-oz. bar, 2 bars 9c

Coffee Red & White Vacuum Packed 1 lb. 25c 3 lbs. 69c

Beef Stew or Spaghetti With Meat Balls Dinty Moore, 24-oz. tins 2 tins 35c

BAKED BEANS BROWN BREAD Red & White 2 tins 29c

CORN BEEF 12-oz. tins 2 tins 33c

CELLO-SEALS For Jams and Jellies Pkg. of 25, 10c

JAR RUBBERS Extra heavy, double lipped. 3 pkgs. 13c

PINK SALMON Blue & White, tall tins 3 tins 35c

TISSUE Blue & white 100-sheet rolls 4 rolls 19c

MILK Red & White Tall Tin 6c

Fresh FRUITS-VEGETABLES Onions New Crop 6 lbs. 19c

Green Beans 3 lbs. 25c

Oranges 2 doz. 25c

Red & White Stores Live IN the Community—Not ON It

Open Evenings and Sundays • STORE LOCATIONS • Open Evenings and Sundays

BROWN'S Red & White 13th & State Ph. 6511

WILSON'S Red & White 1896 S. 12th Ph. 4473

GLENN'S Red & White 2000 N. Capitol Ph. 4015

TED'S Red & White High & Marion Ph. 4722

NO RESTRICTIONS ON PARKING AT ANY OF THESE STORES

RED & WHITE

C. S. ORWIG Co.

Market and Locker Boxes 155 N. Commercial Phone 6723

Legs of LAMB Lb. 20c

Shoulders of LAMB Lb. 12c

Boned and Tied Shoulder Lamb 18c

Sugar Cured HAM Whole or half, lb. 22c

VEAL ROASTS Milk Fed, lb. 15c

PURE LARD 3 lbs. 29c

Young Hens Lb. 25c

Spring Fryers Lb. 28c

TURKEYS Young Lb. 25c

Fresh Pork BACK BONES 5 lbs. 25c

GROCERIES • FRUITS VEGETABLES • FEEDS

Tip-Top Market 155 N. Commercial St. Phone 6723

OPEN NIGHTS UNTIL 9 P. M. PHONE 6723 FOR DELIVERY

Cream Cheese 17c lb.

TIP TOP COFFEE Lb. 23c 2 lbs. 45c

Sunshine Krispy CRACKERS 1 lb. 17c

Miracle Whip Salad dressing, qt. 35c

Picket Pancake Flour 5 lb. bag 25c

Snowdrift Shortening 3 lbs. 52c

Sunshine Rippled Wheat 2 for 1 Bag Marbles Free

A. C. Hawkins and D. H. Wall

NOW AVAILABLE!!

Get These Values for FATHER'S DAY

Quality Clothing and Nationally Famous Brands of Men's Furnishings—Never Before Sold So Low—Because

FORCED TO SELL Brookes SALEM STORE

Shirts First in the Store All New Spring Stock, Values of \$1.95 to \$2.50 included. Famous Brands, All Sizes—Choice 155

Slacks All Regularly \$4.95 Slacks Now A Sensational Value at \$2.50 All \$5.50 Slacks \$3.95 Hand Tailored Gaberdines, New Solid Colors, Reg. \$7.50 at \$4.95

Ties A Riot of Beautiful Colors and New Patterns Values 55c and up to \$1.00 in This Great Assortment 39c

SPORT SHIRTS Every Conceivable Style for Knit, Rayon, Cotton and Broadcloths. Reg. \$1.50 to \$2.50 at 69c

Men's All-Wool Suits 12.85 Finest Suits in the Store, \$34.50 values included, with 2 pants, at \$23.85. All Reg. \$24.50 to \$29.50 Suits at \$17.85. Values to \$24.50 Now Included at

Reg. \$2.50 Value Cocktail Shakers, Ideal Gifts at \$1.35 Zipper, Leather Travel Case Fitted with Toiletries, Reg. \$2.50 \$1.65 Pure Linen Hank® Sets, Values \$1.00 and \$1.50 Choice 79c Men's Fancy Hose and Tie Blended Color or Sets, \$1.00 Value for 79c Wilson Bros. and Stern-Merritt Hand Made Ties, Reg. to \$1.50 Each, Choice 79c All Fine Hats at from \$1.00 to \$2.00 off of Regular Prices. Finest All-Wool Sweaters in the Store, worth, each, \$5.00, Choice at \$3.65 More, Your Choice \$3.65 Gaberdine, Poplin, Washable Fabric Men's Suits, Nationally Known \$15.00 Quality, \$9.85 Shop This Great Sale for Many Other Great Values Too Numerous to Mention

Brookes Forced to Sell Salem Store Entire Stock Sacrificed, Sale Continues Until Sold Out Regardless of Cost or Loss. See Windows, 456 State St.